



# Beef Supply at a Glance - CANADA

Year To Date for the Week Ending September 27, 2014

Federally Inspected Slaughterer (head)	West			East			CANADA		
	2014	2013	% chg	2014	2013	% chg	2014	2013	% chg
Steers	795,336	755,598	5 %	284,395	279,586	2 %	1,079,731	1,035,184	4 %
Heifers	531,919	472,065	13 %	112,089	112,193	0 %	644,008	584,258	10 %
Cows	226,605	241,602	-6 %	65,907	67,797	-3 %	292,512	309,399	-5 %
Bulls	3,804	3,223	18 %	369	350	5 %	4,173	3,573	17 %
<b>Total</b>	<b>1,557,664</b>	<b>1,472,488</b>	<b>6 %</b>	<b>462,760</b>	<b>459,926</b>	<b>1 %</b>	<b>2,020,424</b>	<b>1,932,414</b>	<b>5 %</b>

**Carcass Weight (lbs)**

Steers	838	869	-4 %	887	887	0 %	851	874	-3 %
Heifers	786	821	-4 %	797	800	0 %	788	817	-4 %
Cows	690	683	1 %	658	653	1 %	683	677	1 %
Bulls	922	896	3 %	912	903	1 %	921	897	3 %

**Beef Output (tonnes)**

Fed	492,979	474,648	4 %	155,253	153,537	1 %	648,233	628,184	3 %
Non-Fed	72,713	76,358	-5 %	19,853	20,279	-2 %	92,588	96,672	-4 %
<b>Total</b>	<b>565,692</b>	<b>551,005</b>	<b>3 %</b>	<b>175,106</b>	<b>173,816</b>	<b>1 %</b>	<b>740,821</b>	<b>724,856</b>	<b>2 %</b>

Source: Canadian Beef Grading Agency

**EXPORTS**

For the period Jan. 1 - Sept. 20, 2014

	2014	2013	% chg
Live Cattle			
slaughter steers & heifers	276,891	264,977	4 %
feeder cattle & calves	277,996	201,791	38 %
cows & bulls	244,173	258,611	-6 %
others*	19,335	7,295	
<b>Total</b>	<b>818,395</b>	<b>732,674</b>	<b>12 %</b>

\* = breeding and others

Source: USDA - APHIS

**Beef & Veal Exports to US**

For the period Jan. 1 - July 31, 2014

(Tonnes)	2014	2013	% chg
Fresh/chilled cuts	107,774	96,503	12 %
Frozen cuts	7,147	7,962	-10 %
Offals	10,275	8,597	20 %
Processed	1,433	705	103 %
<b>TOTAL</b>	<b>126,629</b>	<b>113,766</b>	<b>11 %</b>
Exports (Jan. 1 - Dec. 31)		278,966	0 %

Source: Statistics Canada

**IMPORTS**

For the period Jan. 1 - July 31, 2014

(# of head)		2014	2013	% chg
Live Cattle	pure bred	1,481	1,948	-24 %
From U.S.	non pure bred	24,174	27,427	-12 %
<b>Total</b>		<b>25,655</b>	<b>29,375</b>	<b>-13 %</b>

Source: Statistics Canada

For the period Jan. 1 - Sept. 27, 2014

Beef and Veal (tonnes)	2014	2013	% chg
United States	104,051	133,508	-22 %
Australia	22,512	11,803	91 %
Uruguay	11,148	11,449	-3 %
New Zealand	11,732	12,426	-6 %
Others	3,016	2,845	6 %
<b>Total</b>	<b>152,459</b>	<b>172,030</b>	<b>-11 %</b>

**Non-NAFTA Beef/Veal total**

45,603 35,235 29 %

Fresh, chilled &amp; frozen (H.S. 0201, 0202)

Source: CFIA

**Beef & Veal Exports**

For the period Jan. 1 - July 31, 2014

(Tonnes)	2014	2013	% chg
United States	126,629	113,766	11 %
Hong Kong	15,047	14,898	1 %
Mexico	13,100	8,665	51 %
Japan	10,348	9,878	5 %
China	4,353	3,011	45 %
Peru	1,372	289	
Egypt	1,060	1,118	-5 %
Angola	1,056	385	
Taiwan	1,019	298	
South Korea	807	683	18 %
Saudi Arabia	599	1,005	-40 %
Suriname	511	397	29 %
Ivory Coast	506	280	81 %
Senegal	317	210	51 %
Gabon	265	103	
Others	3,184	4,865	-35 %
<b>TOTAL</b>	<b>180,174</b>	<b>159,849</b>	<b>13 %</b>

Source: Statistics Canada

**Beef & Veal Exports**

For the period Jan. 1 - July 31, 2014

('000 \$ CDN)	2014	2013	% chg
United States	726,346	514,838	41 %
Hong Kong	107,618	94,342	14 %
Mexico	78,817	44,236	78 %
Japan	53,581	49,373	9 %
China	22,816	11,019	
Peru	2,298	353	
Egypt	1,473	1,543	-5 %
Angola	1,034	382	
Taiwan	6,669	1,317	
South Korea	7,019	3,067	
Saudi Arabia	4,770	9,421	-49 %
Suriname	2,150	1,963	9 %
Ivory Coast	447	278	61 %
Senegal	269	132	
Gabon	311	73	
Others	14,393	23,316	-38 %
<b>TOTAL</b>	<b>1,030,011</b>	<b>755,651</b>	<b>36 %</b>

Source: Statistics Canada



# UNITED STATES

Year To Date for the Week Ending September 20, 2014

	Weekly	2014	2013	% chg		Weekly	2014	2013	% chg
<b>Slaughter ('000 head)</b>					<b>Carcass Weight (lbs)</b>				
Steers	296.5	11,463.3	11,756.4	-2 %	Steers	887	865	859	1 %
Heifers	163.1	6,119.4	6,664.8	-8 %	Heifers	808	792	790	0 %
Cows	102.8	3,926.8	4,565.2	-14 %	Cows	623	627	620	1 %
Bulls	11.6	399.6	400.9	0 %	Bulls	901	899	884	2 %
<b>Total</b>	<b>574.0</b>	<b>21,909.2</b>	<b>23,387.3</b>	<b>-6 %</b>					
<b>Total (Jan. To Dec. 2013)</b>			<b>31,796.9</b>						

Source : USDA

<b>Beef Output (tonnes)</b>				<b>National Summary of Beef Graded</b>				
					Aug. 2014	2013	2012	
Fed		6,709,349	6,985,791	-4 %	Prime	4.4 %	3.9 %	3.6 %
Non-Fed		1,282,325	1,448,416	-11 %	Choice	68.3 %	66.5 %	65.2 %
<b>Total</b>		<b>7,991,674</b>	<b>8,434,207</b>	<b>-5 %</b>	Select	27.2 %	29.5 %	30.9 %
<b>Total (Jan. To Dec. 2013)</b>			<b>11,504,554</b>					

<b>Cattle Slaughter for the Week Ending</b>					<b>2014-09-20</b>			
For the period	Jan. - Jul.	2014	2013	% chg		2014	2013	% chg
<b>U.S. Beef and Veal Imports (carcass weight, '000,000 lbs)</b>					Canada	54,973	56,692	-3 %
Canada		344	309	11 %	US	573,964	614,938	-7 %
Australia		503	356	41 %	<b>Total Canada &amp; US</b>	<b>628,937</b>	<b>671,630</b>	<b>-6 %</b>
New Zealand		432	402	8 %				
Other		347	343	1 %				
<b>Total</b>		<b>1,627</b>	<b>1,410</b>	<b>15 %</b>				

<b>U.S. Beef and Veal Exports (carcass weight, '000,000 lbs)</b>					<b>Cattle Slaughter Year to Date</b>			
						2014	2013	% chg
Mexico		258	208	24 %	Canada	1,966,512	1,878,652	5 %
Canada		224	286	-22 %	US	21,909,152	23,387,291	-6 %
Japan		377	409	-8 %	<b>Total Canada &amp; US</b>	<b>23,875,664</b>	<b>25,265,943</b>	<b>-6 %</b>
Other		620	556	12 %				
<b>Total</b>		<b>1,479</b>	<b>1,459</b>	<b>1 %</b>				

<b>US Live Cattle Imports</b>					
Mexico - Feeder (Jan 1-Sept. 27, 2014)			704,745	608,011	16 %
Canada (Jan. 1 - Sept. 20, 2014)			818,395	732,674	12 %

## Canada and United States Beef and Veal Tariff Rate Quota Summary

### US Beef and Veal Tariff Rate Quota (TRQ) Summary

YTD Week Ending	2014			2013			2014 VS 2013
Sept. 29, 2014	Quota level	Tonnes entered	% filled	Tonnes entered	% filled		
Australia	378,214	213,072	56 %	141,158	37%		51 %
New Zealand	213,402	157,194	74 %	146,587	69%		7 %
Argentina	20,000	0	0 %	0	0%		
Uruguay	20,000	14,475	72 %	15,960	80%	-9 %	3523454 %
Japan	200	92	46 %	64	32%		44 %
Others	64,805	35,469	55 %	30,533	47%		16 %
<b>Total TRQ</b>	<b>696,621</b>	<b>420,302</b>	<b>60 %</b>	<b>334,302</b>	<b>48%</b>		<b>26 %</b>
<b>TRQ (Australia, N. Z.)</b>	<b>591,616</b>	<b>370,265</b>	<b>63 %</b>	<b>287,745</b>	<b>49%</b>		<b>29 %</b>
Canada	no limit	138,523	n/a	123,389	n/a		
Mexico	no limit	78,912	n/a	66,785	n/a		

### Canadian Beef and Veal Import Permits by Country

### Canadian Beef and Veal Import Permits by Type of Meat

YTD Week Ending	2014			2014			Percentage of Total Imports		
Sept. 30, 2014	2014	2013	% chg	(tonnes)			Total Total (%)		
Global quota (tonnes)	76,409	76,409	0 %	Japan	Grinding Beef	Cuts			
Supp. Quota Authorized	-	-		Australia	16,828	7,644	<b>24,472</b>	<b>50 %</b>	
<b>Total quota</b>	<b>76,409</b>	<b>76,409</b>	<b>0 %</b>	New Zealand	5,606	6,937	<b>12,542</b>	<b>26 %</b>	
Permits issued				Uruguay	9,864	1,943	<b>11,807</b>	<b>24 %</b>	
New Zealand (29600 mt)	12,542	12,146	3 %	<b>Total</b>	<b>32,299</b>	<b>16,525</b>	<b>48,824</b>	<b>100 %</b>	
Australia (35000 mt)	24,672	11,865	108 %	YTD Sept. 30, 2014	<b>Percentage of Total Imports</b>				
Uruguay	11,807	11,527	2 %		<b>Grinding Beef</b>	<b>Cuts</b>			
Japan	2	3	-45 %		2014	2013	2014	2013	
<b>Total</b>	<b>49,023</b>	<b>35,541</b>	<b>38 %</b>		Australia	18.8 %	15.7 %	14.6 %	
Over quota tariff rate : 26.5 %					New Zealand	14.9 %	14.2 %	19.3 %	
					Uruguay	30.1 %	4.0 %	2.3 %	
				<b>Total</b>	<b>66.2 %</b>	<b>63.8 %</b>	<b>33.8 %</b>	<b>36.2 %</b>	

Sources : Canadian Slaughter and Grading Data, CBGA, US Data: USDA, Canadian TRQ Data: DFATD



## Beef Supply at a Glance

### Year To Date for the Week Ending September 27, 2014

#### Weekly Federally Inspected Slaughter

	Fed Slaughter				Non-fed Slaughter				Total Canada
	West	East	Canada	Weekly Avg.	West	East	Canada	Weekly Avg.	
2014-09-27	34,551	11,612	46,163		6,288	1,428	7,716		53,879
2014-09-20	36,624	11,959	48,583		5,229	1,161	6,390		54,973
2014-09-13	36,947	11,792	48,739		5,232	1,191	6,423		55,162
2014-09-06	33,197	9,487	42,684		4,627	1,045	5,672		48,356
August 2014	177,545	52,807	230,352	46,070	24,120	7,076	31,196	6,239	261,548
July 2014	131,272	37,314	168,586	42,147	21,689	6,095	27,784	6,946	196,370
June 2014	150,238	41,519	191,757	47,939	20,963	6,047	27,010	6,753	218,767
May 2014	178,328	48,350	226,678	45,336	23,983	8,320	32,303	6,461	258,981
April 2014	137,935	40,498	178,433	44,608	20,107	7,475	27,582	6,896	206,015
March 2014	178,443	54,749	233,192	46,638	32,677	9,372	42,049	8,410	275,241
February 2014	120,734	39,279	160,013	40,003	31,269	8,067	39,336	9,834	199,349
January 2014	111,441	37,125	148,566	37,142	34,225	8,999	43,224	10,806	191,790
December 2013	129,571	48,817	178,388	35,678	49,111	10,725	59,836	11,967	238,224
November 2013	118,003	41,585	159,588	39,897	39,756	9,317	49,073	12,268	208,661
October 2013	123,755	43,450	167,205	41,801	32,154	7,032	39,186	9,797	206,391
September 2013	174,998	52,658	227,656	45,531	27,352	6,966	34,318	6,864	261,974
August 2013	132,749	39,384	172,133	43,033	22,682	6,630	29,312	7,328	201,445
July 2013	127,118	41,123	168,241	42,060	22,389	6,049	28,438	7,110	196,679
June 2013	149,357	54,963	204,320	40,864	25,649	8,168	33,817	6,763	238,137
May 2013	131,026	42,211	173,237	43,309	23,723	5,228	28,951	7,238	202,188
April 2013	136,709	45,396	182,105	45,526	23,738	6,313	30,051	7,513	212,156
March 2013	162,105	48,960	211,065	42,213	30,814	9,815	40,629	8,126	251,694
February 2013	115,609	33,933	149,542	37,386	33,082	8,796	41,878	10,470	191,420
January 2013	97,992	33,151	131,143	32,786	35,396	10,182	45,578	11,395	176,721
to date 2014	1,327,255	396,491	1,723,746	44,199	230,409	66,276	296,685	7,607	2,020,431
Total 2013	1,598,992	525,631	2,124,623	40,858	365,846	95,221	461,067	8,867	2,585,690

Grading								
	Weekly Totals				September 27, 2014			
	West	%	East	%	Canada 2014	%	Canada 2013	%
A - Prime	470	1.4 %	322	2.8 %	792	1.7 %	550	1.2 %
AAA	17998	52.2 %	6,779	58.4 %	24,777	53.8 %	22,886	50.2 %
AA	14361	41.7 %	3,772	32.5 %	18,133	39.4 %	19,715	43.3 %
A	862	2.5 %	259	2.2 %	1,121	2.4 %	1,196	2.6 %
B1, 2, 3, 4	764	2.2 %	470	4.1 %	1,234	2.7 %	1,208	2.7 %
Year-to-date								
	West	%	East	%	Canada 2014	%	Canada 2013	%
A - Prime	15,189	1.1 %	10,986	2.7 %	26,175	1.5 %	25,935	1.6 %
AAA	720,649	54.5 %	227,733	56.9 %	948,382	55.0 %	893,820	55.0 %
AA	545,126	41.2 %	135,318	33.8 %	680,444	39.5 %	638,365	39.3 %
A	23,662	1.8 %	11,322	2.8 %	34,984	2.0 %	32,902	2.0 %
B1, 2, 3, 4	17,713	1.3 %	15,113	3.8 %	32,826	1.9 %	32,746	2.0 %

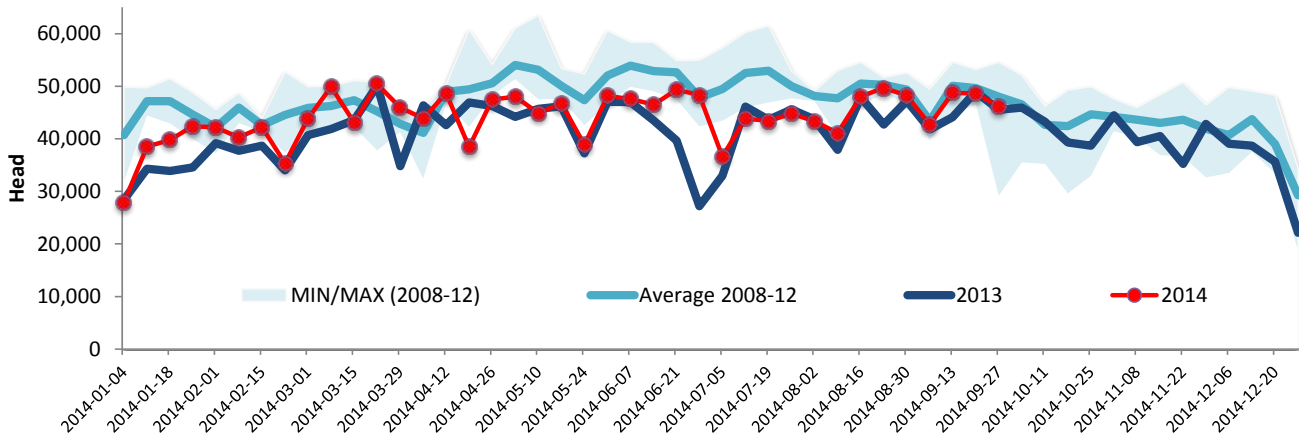
Source : Canadian Beef Grading Agency



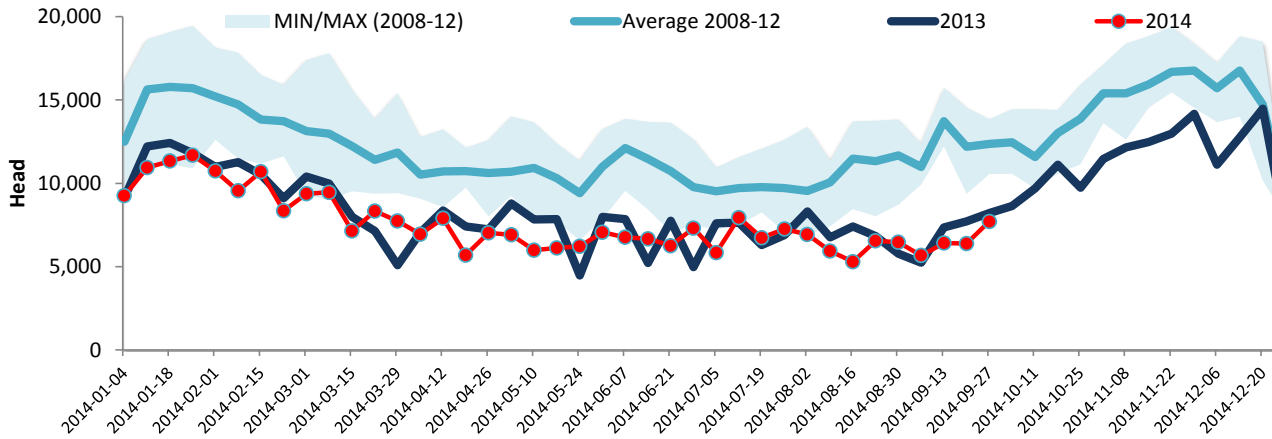
Year To Date for the Week Ending September 27, 2014

Federally Inspected Slaughter

### Canadian Fed Slaughter



### Canadian Non-Fed Slaughter



### Total Cattle Slaughter in Canada

