



# Beef Supply at a Glance - CANADA

Year To Date for the Week Ending September 6, 2014

Federally Inspected Slaughter (head)	West			East			CANADA		
	2014	2013	% chg	2014	2013	% chg	2014	2013	% chg
Steers	724,532	684,278	6 %	257,798	254,064	1 %	982,330	938,342	5 %
Heifers	494,601	437,625	13 %	103,330	104,847	-1 %	597,931	542,472	10 %
Cows	210,421	223,175	-6 %	62,179	63,503	-2 %	272,600	286,678	-5 %
Bulls	3,239	2,673	21 %	317	322	-2 %	3,556	2,995	19 %
<b>Total</b>	<b>1,432,793</b>	<b>1,347,751</b>	<b>6 %</b>	<b>423,624</b>	<b>422,736</b>	<b>0 %</b>	<b>1,856,417</b>	<b>1,770,487</b>	<b>5 %</b>

Carcass Weight (lbs)									
Steers	834	867	-4 %	885	887	0 %	848	872	-3 %
Heifers	785	820	-4 %	796	801	-1 %	787	816	-4 %
Cows	690	684	1 %	657	653	1 %	682	677	1 %
Bulls	917	906	1 %	911	892	2 %	917	904	1 %

Beef Output (tonnes)									
Fed	451,146	432,818	4 %	141,092	140,583	0 %	592,540	573,402	3 %
Non-Fed	67,346	70,447	-4 %	18,700	18,990	-2 %	85,988	89,469	-4 %
<b>Total</b>	<b>518,492</b>	<b>503,265</b>	<b>3 %</b>	<b>159,792</b>	<b>159,573</b>	<b>0 %</b>	<b>678,528</b>	<b>662,871</b>	<b>2 %</b>

Source: Canadian Beef Grading Agency

EXPORTS			
For the period Jan. 1 - Aug. 30, 2014			
Live Cattle	2014	2013	% chg
slaughter steers & heifers	259,470	247,551	5 %
feeder cattle & calves	249,606	178,907	40 %
cows & bulls	223,062	236,508	-6 %
others*	18,453	7,033	
<b>Total</b>	<b>750,591</b>	<b>669,999</b>	<b>12 %</b>

\*= breeding and others  
Source: USDA - APHIS

Beef & Veal Exports to US			
For the period Jan. 1 - July 31, 2014			
(Tonnes)	2014	2013	% chg
Fresh/chilled cuts	107,774	96,503	12 %
Frozen cuts	7,147	7,962	-10 %
Offals	10,275	8,597	20 %
Processed	1,433	705	103 %
<b>TOTAL</b>	<b>126,629</b>	<b>113,766</b>	<b>11 %</b>
Exports (Jan. 1 - Dec. 31)		278,966	-100 %

Source: Statistics Canada

Beef & Veal Exports			
For the period Jan. 1 - July 31, 2014			
(Tonnes)	2014	2013	% chg
United States	126,629	113,766	11 %
Hong Kong	15,047	14,898	1 %
Mexico	13,100	8,665	51 %
Japan	10,348	9,878	5 %
China	4,353	3,011	45 %
Peru	1,372	289	
Egypt	1,060	1,118	-5 %
Angola	1,056	385	
Taiwan	1,019	298	
South Korea	807	683	18 %
Saudi Arabia	599	1,005	-40 %
Suriname	511	397	29 %
Ivory Coast	506	280	81 %
Senegal	317	210	51 %
Gabon	265	103	
Others	3,184	4,865	-35 %
<b>TOTAL</b>	<b>180,174</b>	<b>159,849</b>	<b>13 %</b>

Source: Statistics Canada

IMPORTS			
For the period Jan. 1 - July 31, 2014			
(# of head)	2014	2013	% chg
Live Cattle pure bred	1,481	1,948	-24 %
From U.S. non pure bred	24,174	27,427	-12 %
<b>Total</b>	<b>25,655</b>	<b>29,375</b>	<b>-13 %</b>

Source: Statistics Canada

For the period Jan. 1 - Sept. 6, 2014			
Beef and Veal (tonnes)	2014	2013	% chg
United States	96,757	123,814	-22 %
Australia	19,906	10,759	85 %
Uruguay	11,148	11,219	-1 %
New Zealand	10,749	11,725	-8 %
Others	2,759	2,384	16 %
<b>Total</b>	<b>141,319</b>	<b>159,900</b>	<b>-12 %</b>
<b>Non-NAFTA Beef/Veal total</b>	<b>41,994</b>	<b>33,292</b>	<b>26 %</b>
Fresh, chilled & frozen (H.S. 0201, 0202)			

Source: CFIA

Beef & Veal Exports			
For the period Jan. 1 - July 31, 2014			
('000 \$ CDN)	2014	2013	% chg
United States	726,346	514,838	41 %
Hong Kong	107,618	94,342	14 %
Mexico	78,817	44,236	78 %
Japan	53,581	49,373	9 %
China	22,816	11,019	
Peru	2,298	353	
Egypt	1,473	1,543	-5 %
Angola	1,034	382	
Taiwan	6,669	1,317	
South Korea	7,019	3,067	
Saudi Arabia	4,770	9,421	-49 %
Suriname	2,150	1,963	9 %
Ivory Coast	447	278	61 %
Senegal	269	132	
Gabon	311	73	
Others	14,393	23,316	-38 %
<b>TOTAL</b>	<b>1,030,011</b>	<b>755,651</b>	<b>36 %</b>

Source: Statistics Canada

**UNITED STATES**

Year To Date for the Week Ending August 30, 2014

	Weekly	2014	2013	% chg		Weekly	2014	2013	% chg
<b>Slaughter ('000 head)</b>					<b>Carcass Weight (lbs)</b>				
Steers	308.7	10,568.0	10,831.0	-2 %	Steers	877	863	859	0 %
Heifers	168.6	5,651.0	6,149.3	-8 %	Heifers	798	791	790	0 %
Cows	99.3	3,638.1	4,220.2	-14 %	Cows	627	627	621	1 %
Bulls	11.6	366.8	365.7	0 %	Bulls	901	898	885	1 %
<b>Total</b>	<b>588.2</b>	<b>20,223.9</b>	<b>21,566.2</b>	<b>-6 %</b>					
<b>Total (Jan. To Dec. 2013)</b>			<b>31,796.9</b>						

Source : USDA

<b>Beef Output (tonnes)</b>					<b>National Summary of Beef Graded</b>			
Fed		6,177,300	6,437,183	-4 %		<b>Jul 2014</b>	<b>2013</b>	<b>2012</b>
Non-Fed		1,186,596	1,338,355	-11 %	Prime	4.1 %	3.9 %	3.6 %
<b>Total</b>		<b>7,363,896</b>	<b>7,775,538</b>	<b>-5 %</b>	Choice	69.3 %	66.5 %	65.2 %
<b>Total (Jan. To Dec. 2013)</b>			<b>11,504,554</b>		Select	26.5 %	29.5 %	30.9 %

<b>Cattle Slaughter for the Week Ending</b>					<b>2014-08-30</b>				
	<b>For the period</b>	<b>Jan. - Jul.</b>	<b>2014</b>	<b>2013</b>	<b>% chg</b>	<b>2014</b>	<b>2013</b>	<b>% chg</b>	
<b>U.S. Beef and Veal Imports (carcass weight, '000,000 lbs)</b>									
Canada			344	309	11 %	Canada	54,673	53,024	3 %
Australia			503	356	41 %	US	588,173	633,066	-7 %
New Zealand			432	402	8 %	<b>Total Canada &amp; US</b>	<b>642,846</b>	<b>686,090</b>	<b>-6 %</b>
Other			347	343	1 %				
<b>Total</b>			<b>1,627</b>	<b>1,410</b>	<b>15 %</b>				

<b>U.S. Beef and Veal Exports (carcass weight, '000,000 lbs)</b>					<b>Cattle Slaughter Year to Date</b>				
Mexico			258	208	24 %	Canada	1,808,021	1,723,464	5 %
Canada			224	286	-22 %	US	20,223,873	21,566,223	-6 %
Japan			377	409	-8 %	<b>Total Canada &amp; US</b>	<b>22,031,894</b>	<b>23,289,687</b>	<b>-5 %</b>
Other			620	556	12 %				
<b>Total</b>			<b>1,479</b>	<b>1,459</b>	<b>1 %</b>				

**Canada and United States Beef and Veal Tariff Rate Quota Summary**

<b>US Beef and Veal Tariff Rate Quota (TRQ) Summary</b>						
YTD Week Ending Sept. 8, 2014		<b>2014</b>		<b>2013</b>		
	Quota level	Tonnes entered	% filled	Tonnes entered	% filled	2014 VS 2013
Australia	378,214	186,643	49 %	129,212	34 %	44 %
New Zealand	213,402	150,611	71 %	139,900	66 %	8 %
Argentina	20,000	0	0 %	0	0 %	
Uruguay	20,000	13,328	67 %	15,188	76 %	-12 %
Japan	200	86	43 %	59	30 %	45 %
Others	64,805	31,062	48 %	27,956	43 %	11 %
<b>Total TRQ</b>	<b>696,621</b>	<b>381,729</b>	<b>55 %</b>	<b>312,314</b>	<b>45 %</b>	<b>22 %</b>
<b>TRQ (Australia, N. Z.)</b>	<b>591,616</b>	<b>337,254</b>	<b>57 %</b>	<b>269,111</b>	<b>45 %</b>	<b>25 %</b>
Canada	no limit	126,267	n/a	114,139	n/a	
Mexico	no limit	71,747	n/a	61,430	n/a	

<b>Canadian Beef and Veal Import Permits by Country</b>				<b>Canadian Beef and Veal Import Permits by Type of Meat</b>				
YTD Week Ending Sept. 10, 2014		<b>2014</b>		<b>2014</b>		<b>(tonnes)</b>		
	<b>2014</b>	<b>2013</b>	<b>% chg</b>		Grinding Beef	Cuts	<b>Total Total (%)</b>	
Global quota (tonnes)	76,409	76,409	0 %	Japan	1	1	2	0 %
Supp. Quota Authorized	-	-		Australia	15,450	7,035	22,485	49 %
<b>Total quota</b>	<b>76,409</b>	<b>76,409</b>	<b>0 %</b>	New Zealand	5,255	6,624	11,878	26 %
Permits issued				Uruguay	9,864	1,943	11,807	26 %
New Zealand (29600 mt)	11,878	11,657	2 %	<b>Total</b>	<b>30,570</b>	<b>15,603</b>	<b>46,173</b>	<b>100 %</b>
Australia (35000 mt)	22,485	10,856	107 %	YTD Sept. 10, 2014	<b>Percentage of Total Imports</b>			
Uruguay	11,807	11,476	3 %		<b>Grinding Beef</b>	<b>Cuts</b>		
Japan	1	3	-50 %		2014	2013	2014	2013
<b>Total</b>	<b>46,172</b>	<b>33,992</b>	<b>36 %</b>	Australia	33.5 %	17.5 %	15.2 %	14.4 %
Over quota tariff rate : 26.5 %				New Zealand	11.4 %	15.3 %	14.3 %	19.0 %
				Uruguay	21.4 %	31.4 %	4.2 %	2.3 %
				<b>Total</b>	<b>66.2 %</b>	<b>64.3 %</b>	<b>33.8 %</b>	<b>35.7 %</b>

Sources : Canadian Slaughter and Grading Data, CBGA, US Data: USDA, Canadian TRQ Data: DFATD



## Beef Supply at a Glance

### Year To Date for the Week Ending September 6, 2014

#### Weekly Federally Inspected Slaughter

	Fed Slaughter				Non-fed Slaughter				Total Canada
	West	East	Canada	Weekly Avg.	West	East	Canada	Weekly Avg.	
2014-09-06	33,197	9,487	42,684		4,627	1,045	5,672		48,356
August 2014	177,545	52,807	230,352	46,070	24,120	7,076	31,196	6,239	261,548
July 2014	131,272	37,314	168,586	42,147	21,689	6,095	27,784	6,946	196,370
June 2014	150,238	41,519	191,757	47,939	20,963	6,047	27,010	6,753	218,767
May 2014	178,328	48,350	226,678	45,336	23,983	8,320	32,303	6,461	258,981
April 2014	137,935	40,498	178,433	44,608	20,107	7,475	27,582	6,896	206,015
March 2014	178,443	54,749	233,192	46,638	32,677	9,372	42,049	8,410	275,241
February 2014	120,734	39,279	160,013	40,003	31,269	8,067	39,336	9,834	199,349
January 2014	111,441	37,125	148,566	37,142	34,225	8,999	43,224	10,806	191,790
December 2013	129,571	48,817	178,388	35,678	49,111	10,725	59,836	11,967	238,224
November 2013	118,003	41,585	159,588	39,897	39,756	9,317	49,073	12,268	208,661
October 2013	123,755	43,450	167,205	41,801	32,154	7,032	39,186	9,797	206,391
September 2013	174,998	52,658	227,656	45,531	27,352	6,966	34,318	6,864	261,974
August 2013	132,749	39,384	172,133	43,033	22,682	6,630	29,312	7,328	201,445
July 2013	127,118	41,123	168,241	42,060	22,389	6,049	28,438	7,110	196,679
June 2013	149,357	54,963	204,320	40,864	25,649	8,168	33,817	6,763	238,137
May 2013	131,026	42,211	173,237	43,309	23,723	5,228	28,951	7,238	202,188
April 2013	136,709	45,396	182,105	45,526	23,738	6,313	30,051	7,513	212,156
March 2013	162,105	48,960	211,065	42,213	30,814	9,815	40,629	8,126	251,694
February 2013	115,609	33,933	149,542	37,386	33,082	8,796	41,878	10,470	191,420
January 2013	97,992	33,151	131,143	32,786	35,396	10,182	45,578	11,395	176,721
to date 2014	1,219,133	361,128	1,580,261	43,896	213,660	62,496	276,156	7,671	1,856,417
Total 2013	1,598,992	525,631	2,124,623	40,858	365,846	95,221	461,067	8,867	2,585,690

Grading								
	Weekly Totals				September 6, 2014			
	West	%	East	%	Canada 2014	%	Canada 2013	%
A - Prime	417	1.3 %	236	2.5 %	653	1.5 %	459	1.1 %
AAA	17248	52.0 %	5,722	60.2 %	22,970	53.8 %	21,797	52.1 %
AA	13977	42.1 %	3,031	31.9 %	17,008	39.9 %	17,518	41.9 %
A	762	2.3 %	223	2.3 %	985	2.3 %	1,005	2.4 %
B1, 2, 3, 4	763	2.3 %	292	3.1 %	1,055	2.5 %	1,059	2.5 %
Year-to-date								
	West	%	East	%	Canada 2014	%	Canada 2013	%
A - Prime	13,907	1.1 %	10,104	2.8 %	24,011	1.5 %	24,520	1.7 %
AAA	665,193	54.8 %	207,048	56.7 %	872,241	55.2 %	824,356	55.5 %
AA	498,681	41.1 %	123,691	33.9 %	622,372	39.4 %	577,608	38.9 %
A	21,055	1.7 %	10,541	2.9 %	31,596	2.0 %	29,452	2.0 %
B1, 2, 3, 4	15,778	1.3 %	13,657	3.7 %	29,435	1.9 %	29,168	2.0 %

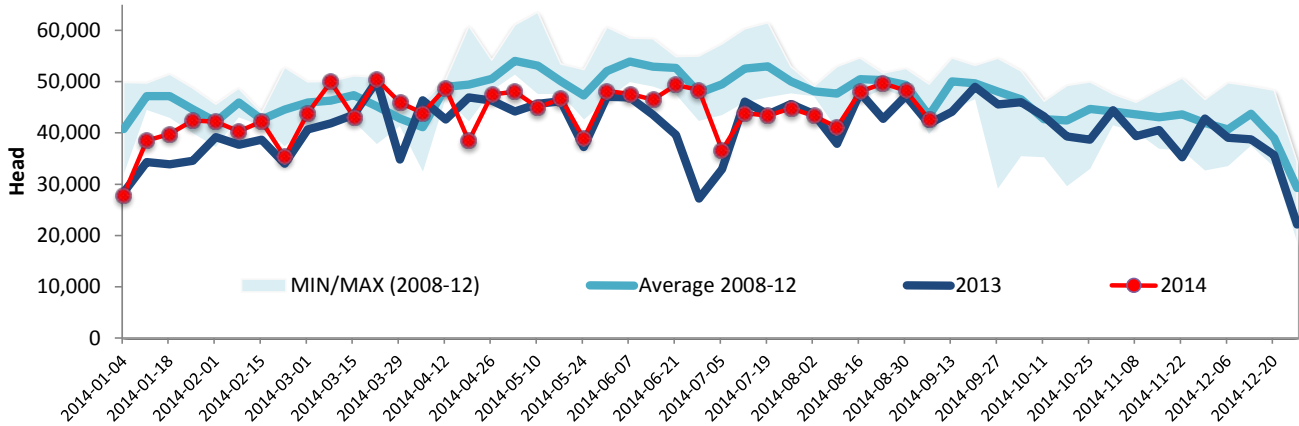
Source : Canadian Beef Grading Agency



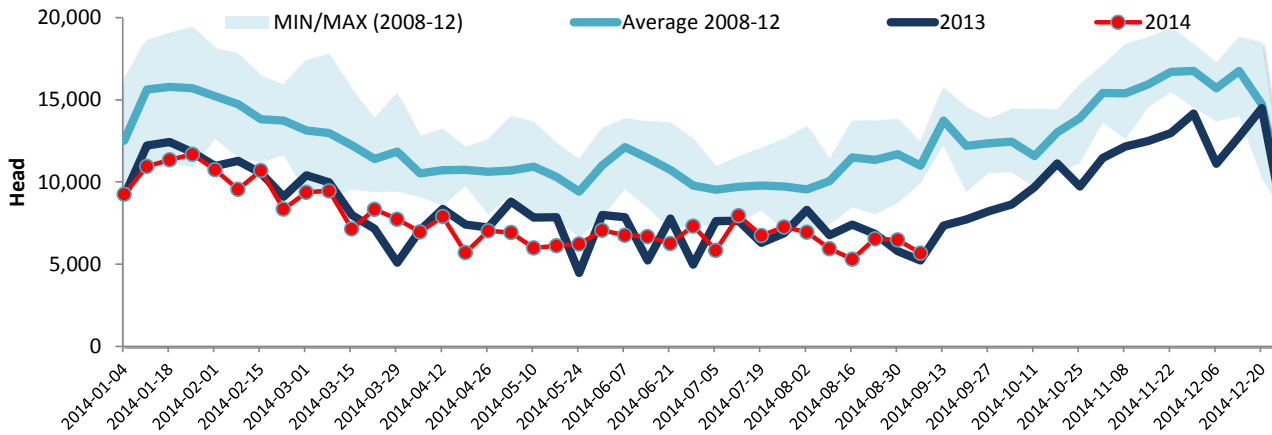
Year To Date for the Week Ending September 6, 2014

Federally Inspected Slaughter

### Canadian Fed Slaughter



### Canadian Non-Fed Slaughter



### Total Cattle Slaughter in Canada

