



# Beef Supply at a Glance - CANADA

Year To Date for the Week Ending October 18, 2014

Federally Inspected Slaughter (head)	West			East			CANADA		
	2014	2013	% chg	2014	2013	% chg	2014	2013	% chg
Steers	856,753	815,738	5 %	309,554	304,641	2 %	1,166,307	1,120,379	4 %
Heifers	578,518	507,809	14 %	118,082	119,791	-1 %	696,600	627,600	11 %
Cows	244,572	265,553	-8 %	69,674	72,942	-4 %	314,246	338,495	-7 %
Bulls	4,212	3,562	18 %	413	368	12 %	4,625	3,930	18 %
<b>Total</b>	<b>1,684,055</b>	<b>1,592,662</b>	<b>6 %</b>	<b>497,723</b>	<b>497,742</b>	<b>0 %</b>	<b>2,181,778</b>	<b>2,090,404</b>	<b>4 %</b>

Carcass Weight (lbs)									
Steers	842	870	-3 %	890	888	0 %	855	875	-2 %
Heifers	789	821	-4 %	798	799	0 %	790	817	-3 %
Cows	691	683	1 %	659	654	1 %	684	677	1 %
Bulls	928	896	4 %	897	901	0 %	925	896	3 %

Beef Output (tonnes)									
Fed	535,380	512,219	5 %	168,060	166,462	1 %	703,412	678,682	4 %
Non-Fed	78,595	83,912	-6 %	21,039	21,820	-4 %	99,647	105,771	-6 %
<b>Total</b>	<b>613,975</b>	<b>596,131</b>	<b>3 %</b>	<b>189,099</b>	<b>188,282</b>	<b>0 %</b>	<b>803,059</b>	<b>784,453</b>	<b>2 %</b>

Source: Canadian Beef Grading Agency

EXPORTS			
For the period Jan. 1 - Oct. 11, 2014			
Live Cattle	2014	2013	% chg
slaughter steers & heifers	299,360	284,260	5 %
feeder cattle & calves	316,588	226,037	40 %
cows & bulls	265,473	279,089	-5 %
others*	20,863	7,854	
<b>Total</b>	<b>902,284</b>	<b>797,240</b>	<b>13 %</b>

\*= breeding and others  
Source: USDA - APHIS

Beef & Veal Exports to US			
For the period Jan. 1 - Aug. 31, 2014			
(Tonnes)	2014	2013	% chg
Fresh/chilled cuts	122,830	110,263	11 %
Frozen cuts	8,141	8,486	-4 %
Offals	11,807	9,972	18 %
Processed	1,615	781	107 %
<b>TOTAL</b>	<b>144,394</b>	<b>129,502</b>	<b>11 %</b>
Exports (Jan. 1 - Dec. 31)		278,966	0 %

Source: Statistics Canada

Beef & Veal Exports			
For the period Jan. 1 - Aug. 31, 2014			
(Tonnes)	2014	2013	% chg
United States	144,394	129,502	11 %
Hong Kong	16,845	16,905	0 %
Mexico	15,227	10,240	49 %
Japan	12,580	11,457	10 %
China	4,986	3,223	55 %
Peru	1,499	289	
Angola	1,205	564	
Taiwan	1,172	298	
Egypt	1,060	1,383	-23 %
South Korea	934	733	27 %
Saudi Arabia	607	1,148	-47 %
Suriname	568	458	24 %
Ivory Coast	506	330	53 %
Senegal	392	210	87 %
Guinea	296	236	25 %
Others	3,474	5,314	-35 %
<b>TOTAL</b>	<b>205,744</b>	<b>182,291</b>	<b>13 %</b>

Source: Statistics Canada

IMPORTS			
For the period Jan. 1 - Aug. 31, 2014			
(# of head)	2014	2013	% chg
Live Cattle pure bred	1,806	2,402	-25 %
From U.S. non pure bred	27,122	31,185	-13 %
<b>Total</b>	<b>28,928</b>	<b>33,587</b>	<b>-14 %</b>

Source: Statistics Canada

Beef and Veal			
For the period Jan. 1 - Oct. 18, 2014			
(tonnes)	2014	2013	% chg
United States	111,149	143,845	-23 %
Australia	24,365	13,173	85 %
Uruguay	11,301	11,501	-2 %
New Zealand	12,585	12,703	-1 %
Others	3,170	2,999	6 %
<b>Total</b>	<b>162,570</b>	<b>184,220</b>	<b>-12 %</b>
<b>Non-NAFTA Beef/Veal total</b>	<b>48,452</b>	<b>36,904</b>	<b>31 %</b>
Fresh, chilled & frozen (H.S. 0201, 0202)			

Source: CFIA

Beef & Veal Exports			
For the period Jan. 1 - Aug. 31, 2014			
('000 \$ CDN)	2014	2013	% chg
United States	841,052	588,054	43 %
Hong Kong	121,684	107,453	13 %
Mexico	93,158	53,073	76 %
Japan	64,327	56,626	14 %
China	26,773	11,887	
Peru	2,509	353	
Angola	1,225	561	
Taiwan	7,825	1,319	
Egypt	1,473	1,825	-19 %
South Korea	7,806	3,579	
Saudi Arabia	4,852	10,906	-56 %
Suriname	2,397	2,309	4 %
Ivory Coast	441	303	45 %
Senegal	355	132	
Guinea	290	152	91 %
Others	16,340	25,794	-37 %
<b>TOTAL</b>	<b>1,192,506</b>	<b>864,327</b>	<b>38 %</b>

Source: Statistics Canada

**UNITED STATES**

Year To Date for the Week Ending October 11, 2014

Slaughter ('000 head)				Carcass Weight (lbs)					
	Weekly	2014	2013	% chg		Weekly	2014	2013	% chg
Steers	285.7	12,343.9	12,677.4	-3 %	Steers	899	867	860	1 %
Heifers	165.3	6,618.2	7,225.7	-8 %	Heifers	821	793	790	0 %
Cows	102.0	4,228.0	4,920.2	-14 %	Cows	618	627	620	1 %
Bulls	11.1	433.0	437.4	-1 %	Bulls	900	898	884	2 %
<b>Total</b>	<b>564.2</b>	<b>23,623.0</b>	<b>25,260.8</b>	<b>-6 %</b>					
<b>Total (Jan. To Dec. 2013)</b>			<b>31,796.9</b>						

Source : USDA

Beef Output (tonnes)				National Summary of Beef Graded				
					Sep. 2014	2013	2012	
Fed		7,250,173	7,550,662	-4 %	Prime	4.6 %	3.9 %	3.6 %
Non-Fed		1,381,651	1,563,178	-12 %	Choice	68.3 %	66.5 %	65.2 %
<b>Total</b>		<b>8,631,825</b>	<b>9,113,840</b>	<b>-5 %</b>	Select	27.0 %	29.5 %	30.9 %
<b>Total (Jan. To Dec. 2013)</b>			<b>11,504,554</b>					

Cattle Slaughter for the Week Ending				2014-10-11				
For the period	Jan. - Aug.	2014	2013	% chg	2014	2013	% chg	
<b>U.S. Beef and Veal Imports (carcass weight, '000,000 lbs)</b>					Canada	54,530	52,943	3 %
Canada		392	352	11 %	US	564,194	609,446	-7 %
Australia		600	402	49 %	<b>Total Canada &amp; US</b>	<b>618,724</b>	<b>662,389</b>	<b>-7 %</b>
New Zealand		470	436	8 %				
Other		411	388	6 %				
<b>Total</b>		<b>1,873</b>	<b>1,579</b>	<b>19 %</b>				

Cattle Slaughter Year to Date				US Live Cattle Imports				
Canada					Canada	2,129,480	2,039,956	4 %
US					US	23,623,029	25,260,769	-6 %
<b>Total Canada &amp; US</b>					<b>Total Canada &amp; US</b>	<b>25,752,509</b>	<b>27,300,725</b>	<b>-6 %</b>
					<b>US Live Cattle Imports</b>			
					Mexico - Feeder (Jan 1-Oct. 18, 2014)	753,639	661,407	14 %
					Canada (Jan. 1 - Oct. 11, 2014)	902,284	797,240	13 %

**Canada and United States Beef and Veal Tariff Rate Quota Summary****US Beef and Veal Tariff Rate Quota (TRQ) Summary**

YTD Week Ending	2014			2013		
Oct. 20, 2014	Quota level	Tonnes entered	% filled	Tonnes entered	% filled	2014 VS 2013
Australia	378,214	240,716	64 %	152,384	40%	58 %
New Zealand	213,402	163,058	76 %	151,014	71%	8 %
Argentina	20,000	0	0 %	0	0%	
Uruguay	20,000	15,506	78 %	16,480	82%	-6 %
Japan	200	101	50 %	71	36%	42 %
Others	64,805	39,573	61 %	32,789	51%	21 %
<b>Total TRQ</b>	<b>696,621</b>	<b>458,954</b>	<b>66 %</b>	<b>352,739</b>	<b>51%</b>	<b>30 %</b>
<b>TRQ (Australia, N. Z.)</b>	<b>591,616</b>	<b>403,774</b>	<b>68 %</b>	<b>303,399</b>	<b>51%</b>	<b>33 %</b>
Canada	no limit	150,473	n/a	135,100	n/a	
Mexico	no limit	85,036	n/a	71,487	n/a	

**Canadian Beef and Veal Import Permits by Country**

YTD Week Ending	2014			2013		
Oct. 20, 2014	Quota level	Tonnes entered	% filled	Tonnes entered	% filled	2014 VS 2013
Global quota (tonnes)	76,409	76,409	0 %			
Supp. Quota Authorized	-	-				
<b>Total quota</b>	<b>76,409</b>	<b>76,409</b>	<b>0 %</b>			
Permits issued						
New Zealand (29600 mt)	13,079	12,455	5 %			
Australia (35000 mt)	26,977	13,125	106 %			
Uruguay	11,807	11,704	1 %			
Japan	2	3	-18 %			
<b>Total</b>	<b>51,865</b>	<b>37,287</b>	<b>39 %</b>			

Over quota tariff rate : 26.5 %

**Canadian Beef and Veal Import Permits by Type of Meat**

YTD Week Ending	2014			2013		
Oct. 20, 2014	Grinding Beef	Cuts	Total Total (%)	Grinding Beef	Cuts	Total Total (%)
Japan	1	2	2	1	2	0 %
Australia	18,277	8,700	26,977	18,277	8,700	52 %
New Zealand	5,899	7,180	13,079	5,899	7,180	25 %
Uruguay	9,864	1,943	11,807	9,864	1,943	23 %
<b>Total</b>	<b>34,041</b>	<b>17,824</b>	<b>51,865</b>	<b>34,041</b>	<b>17,824</b>	<b>100 %</b>
Percentage of Total Imports						
YTD Oct. 20, 2014	2014	2013	2014	2013	2014	2013
Australia	35.2 %	20.6 %	16.8 %	20.6 %	16.8 %	14.6 %
New Zealand	11.4 %	14.5 %	13.8 %	14.5 %	13.8 %	18.9 %
Uruguay	19.0 %	29.1 %	3.7 %	29.1 %	3.7 %	2.3 %
<b>Total</b>	<b>65.6 %</b>	<b>64.2 %</b>	<b>34.4 %</b>	<b>64.2 %</b>	<b>34.4 %</b>	<b>35.8 %</b>

Sources : Canadian Slaughter and Grading Data, CBGA, US Data: USDA, Canadian TRQ Data: DFATD



## Beef Supply at a Glance

### Year To Date for the Week Ending October 18, 2014

#### Weekly Federally Inspected Slaughter

	Fed Slaughter				Non-fed Slaughter				Total Canada
	West	East	Canada	Weekly Avg.	West	East	Canada	Weekly Avg.	
2014-10-18	36,057	8,455	44,512		6,429	1,324	7,753		52,265
2014-10-11	36,338	10,743	47,081		6,004	1,445	7,449		54,530
2014-10-04	35,621	11,954	47,575		5,942	1,042	6,984		54,559
September 2014	141,319	44,843	186,162	46,541	21,376	4,825	26,201	6,550	212,363
August 2014	177,545	52,807	230,352	46,070	24,120	7,076	31,196	6,239	261,548
July 2014	131,272	37,314	168,586	42,147	21,689	6,095	27,784	6,946	196,370
June 2014	150,238	41,519	191,757	47,939	20,963	6,047	27,010	6,753	218,767
May 2014	178,328	48,350	226,678	45,336	23,983	8,320	32,303	6,461	258,981
April 2014	137,935	40,498	178,433	44,608	20,107	7,475	27,582	6,896	206,015
March 2014	178,443	54,749	233,192	46,638	32,677	9,372	42,049	8,410	275,241
February 2014	120,734	39,279	160,013	40,003	31,269	8,067	39,336	9,834	199,349
January 2014	111,441	37,125	148,566	37,142	34,225	8,999	43,224	10,806	191,790
December 2013	129,571	48,817	178,388	35,678	49,111	10,725	59,836	11,967	238,224
November 2013	118,003	41,585	159,588	39,897	39,756	9,317	49,073	12,268	208,661
October 2013	123,755	43,450	167,205	41,801	32,154	7,032	39,186	9,797	206,391
September 2013	174,998	52,658	227,656	45,531	27,352	6,966	34,318	6,864	261,974
August 2013	132,749	39,384	172,133	43,033	22,682	6,630	29,312	7,328	201,445
July 2013	127,118	41,123	168,241	42,060	22,389	6,049	28,438	7,110	196,679
June 2013	149,357	54,963	204,320	40,864	25,649	8,168	33,817	6,763	238,137
May 2013	131,026	42,211	173,237	43,309	23,723	5,228	28,951	7,238	202,188
April 2013	136,709	45,396	182,105	45,526	23,738	6,313	30,051	7,513	212,156
March 2013	162,105	48,960	211,065	42,213	30,814	9,815	40,629	8,126	251,694
February 2013	115,609	33,933	149,542	37,386	33,082	8,796	41,878	10,470	191,420
January 2013	97,992	33,151	131,143	32,786	35,396	10,182	45,578	11,395	176,721
to date 2014	1,435,271	427,636	1,862,907	44,355	248,784	70,087	318,871	7,592	2,181,778
Total 2013	1,598,992	525,631	2,124,623	40,858	365,846	95,221	461,067	8,867	2,585,690

Grading								
	Weekly Totals				October 18, 2014		Canada 2013	
	West	%	East	%	Canada 2014	%	Canada 2013	%
A - Prime	660	1.8 %	212	2.5 %	872	2.0 %	536	1.4 %
AAA	19327	53.9 %	4,958	58.9 %	24,285	54.8 %	20,929	53.1 %
AA	14737	41.1 %	2,805	33.3 %	17,542	39.6 %	16,161	41.0 %
A	599	1.7 %	221	2.6 %	820	1.9 %	841	2.1 %
B1, 2, 3, 4	548	1.5 %	227	2.7 %	775	1.7 %	940	2.4 %
Year-to-date								
	West	%	East	%	Canada 2014	%	Canada 2013	%
A - Prime	16,937	1.2 %	11,786	2.7 %	28,723	1.5 %	27,596	1.6 %
AAA	779,417	54.5 %	246,333	57.1 %	1,025,750	55.1 %	962,631	54.9 %
AA	588,218	41.1 %	145,357	33.7 %	733,575	39.4 %	690,382	39.4 %
A	25,805	1.8 %	11,973	2.8 %	37,778	2.0 %	35,955	2.1 %
B1, 2, 3, 4	19,556	1.4 %	16,080	3.7 %	35,636	1.9 %	35,858	2.0 %

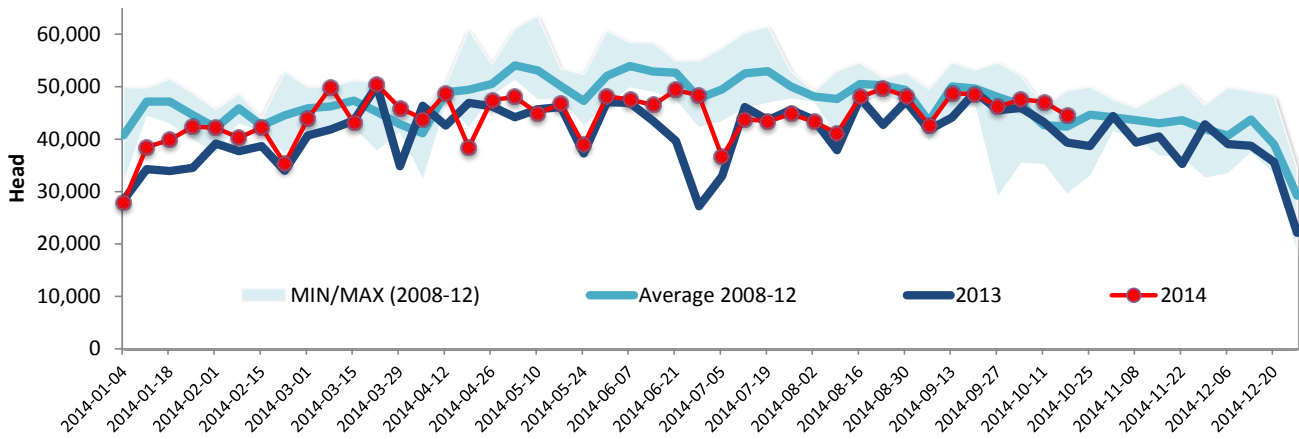
Source : Canadian Beef Grading Agency



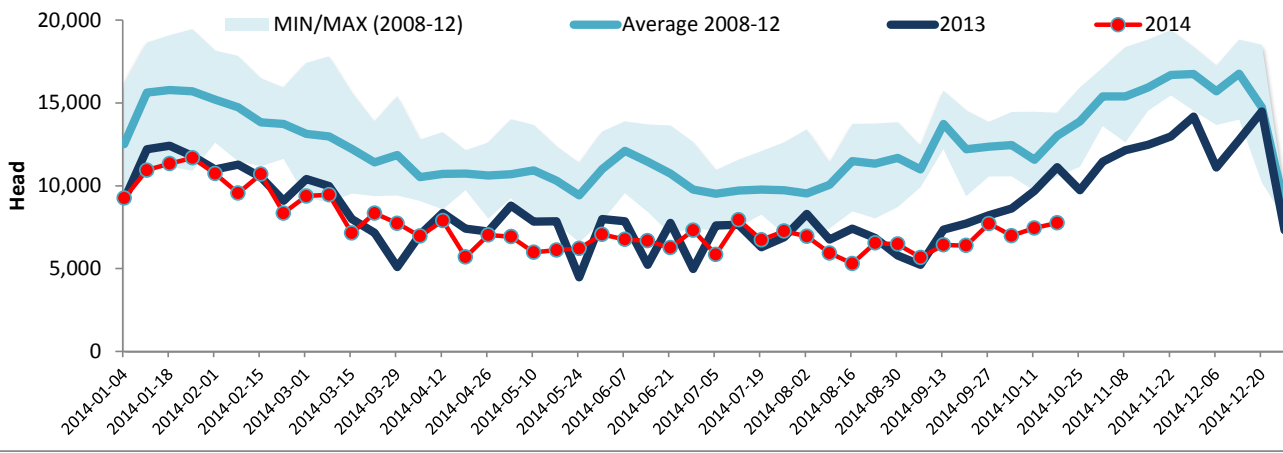
Year To Date for the Week Ending October 18, 2014

Federally Inspected Slaughter

### Canadian Fed Slaughter



### Canadian Non-Fed Slaughter



### Total Cattle Slaughter in Canada

