



# Beef Supply at a Glance - CANADA

Year To Date for the Week Ending November 30, 2013

| Federally Inspected Slaughterer<br>(head) | West             |                  |            | East           |                |             | CANADA           |                  |             |
|---|------------------|------------------|------------|----------------|----------------|-------------|------------------|------------------|-------------|
|   | 2013             | 2012             | % chg      | 2013           | 2012           | % chg       | 2013             | 2012             | % chg       |
| Steers                                    | 908,020          | 937,047          | -3 %       | 353,822        | 342,672        | 3 %         | 1,261,842        | 1,279,719        | -1 %        |
| Heifers                                   | 592,606          | 632,894          | -6 %       | 134,610        | 146,779        | -8 %        | 727,216          | 779,673          | -7 %        |
| Cows                                      | 324,104          | 240,771          | 35 %       | 86,680         | 130,641        | -34 %       | 410,784          | 371,412          | 11 %        |
| Bulls                                     | 4,104            | 12,036           | -66 %      | 512            | 1,725          | -70 %       | 4,616            | 13,761           | -66 %       |
| <b>Total</b>                              | <b>1,828,834</b> | <b>1,822,748</b> | <b>0 %</b> | <b>575,624</b> | <b>621,817</b> | <b>-7 %</b> | <b>2,404,458</b> | <b>2,444,565</b> | <b>-2 %</b> |

| Carcass Weight (lbs) |     |       |       |     |     |     |     |       |       |
|----------------------|-----|-------|-------|-----|-----|-----|-----|-------|-------|
| Steers               | 839 | 874   | -4 %  | 912 | 892 | 2 % | 876 | 879   | 0 %   |
| Heifers              | 796 | 825   | -4 %  | 817 | 800 | 2 % | 815 | 821   | -1 %  |
| Cows                 | 661 | 700   | -6 %  | 658 | 637 | 3 % | 675 | 678   | 0 %   |
| Bulls                | 837 | 1,039 | -19 % | 957 | 934 | 2 % | 891 | 1,026 | -13 % |

| Beef Output (tonnes) |                |                |             |                |                |             |                |                |             |
|----------------------|----------------|----------------|-------------|----------------|----------------|-------------|----------------|----------------|-------------|
| Fed                  | 560,701        | 609,598        | -8 %        | 196,665        | 192,312        | 2 %         | 771,843        | 802,266        | -4 %        |
| Non-Fed              | 98,940         | 82,293         | 20 %        | 26,148         | 38,559         | -32 %       | 127,905        | 120,880        | 6 %         |
| <b>Total</b>         | <b>659,641</b> | <b>691,892</b> | <b>-5 %</b> | <b>222,812</b> | <b>230,871</b> | <b>-3 %</b> | <b>899,748</b> | <b>923,146</b> | <b>-3 %</b> |

Source: Canadian Beef Grading Agency

| EXPORTS                               |                |                |             |
|---------------------------------------|----------------|----------------|-------------|
| For the period Jan. 1 - Nov. 23, 2013 |                |                |             |
| Live Cattle                           | 2013           | 2012           | % chg       |
| slaughter steers & heifers            | 319,789        | 384,978        | -17 %       |
| feeder cattle & calves                | 273,282        | 128,532        | 113 %       |
| cows & bulls                          | 370,473        | 211,315        | 75 %        |
| others*                               | 8,899          | 6,813          | 31 %        |
| <b>Total</b>                          | <b>972,443</b> | <b>731,638</b> | <b>33 %</b> |

\* = breeding and others

Source: USDA - APHIS

| Beef & Veal Exports to US  |                |                |             |
|----------------------------|----------------|----------------|-------------|
| (Tonnes) Jan. 1 - Oct. 31  |                |                |             |
|                            | 2013           | 2012           | % chg       |
| Fresh/chilled cuts         | 140,528        | 148,252        | -5 %        |
| Frozen cuts                | 10,726         | 14,499         | -26 %       |
| Offals                     | 12,799         | 12,322         | 4 %         |
| Processed                  | 994            | 967            | 3 %         |
| <b>TOTAL</b>               | <b>165,046</b> | <b>176,039</b> | <b>-6 %</b> |
| Exports (Jan. 1 - Dec. 31) |                | 271,045        |             |

Source: Statistics Canada

| IMPORTS                               |               |               |             |
|---------------------------------------|---------------|---------------|-------------|
| For the period Jan. 1 - Oct. 31, 2013 |               |               |             |
| (# of head)                           | 2013          | 2012          | % chg       |
| Live Cattle pure bred                 | 2,980         | 3,933         | -24 %       |
| From U.S. non pure bred               | 49,872        | 42,941        | 16 %        |
| <b>Total</b>                          | <b>52,852</b> | <b>46,874</b> | <b>13 %</b> |

Source: Statistics Canada

| For the period Jan. 1 - Nov. 30, 2013     |                |                |             |
|---|----------------|----------------|-------------|
| Beef and Veal                             | 2013           | 2012           | % chg       |
| (tonnes) preliminary                      |                |                |             |
| United States                             | 160,080        | 161,036        | -1 %        |
| New Zealand                               | 13,380         | 19,441         | -31 %       |
| Australia                                 | 14,896         | 14,099         | 6 %         |
| Uruguay                                   | 12,000         | 10,296         | 17 %        |
| Others                                    | 3,471          | 3,325          | 4 %         |
| <b>Total</b>                              | <b>203,826</b> | <b>208,197</b> | <b>-2 %</b> |
| <b>Non-NAFTA Beef/Veal total</b>          | <b>39,770</b>  | <b>43,503</b>  | <b>-9 %</b> |
| Fresh, chilled & frozen (H.S. 0201, 0202) |                |                |             |

Source: CFIA

| Beef & Veal Exports |                |                |             |
|---------------------|----------------|----------------|-------------|
| Jan. 1 to Oct. 31   |                |                |             |
| (Tonnes)            | 2013           | 2012           | % chg       |
| United States       | 165,046        | 176,039        | -6 %        |
| Hong Kong           | 20,982         | 15,625         | 34 %        |
| Mexico              | 14,147         | 20,869         | -32 %       |
| Japan               | 13,773         | 10,776         | 28 %        |
| China               | 4,961          | 938            |             |
| Egypt               | 2,050          | 1,614          | 27 %        |
| Saudi Arabia        | 1,282          | 107            |             |
| Macau               | 1,263          | 3              |             |
| Peru                | 957            | 0              |             |
| Angola              | 844            | 366            |             |
| South Korea         | 839            | 1,668          | -50 %       |
| Russia              | 623            | 5,579          | -89 %       |
| Suriname            | 527            | 557            | -5 %        |
| Cuba                | 513            | 311            | 65 %        |
| Philippines         | 491            | 859            | -43 %       |
| Others              | 5,128          | 4,161          | 23 %        |
| <b>TOTAL</b>        | <b>233,427</b> | <b>239,472</b> | <b>-3 %</b> |

Source: Statistics Canada

| Beef & Veal Exports |                  |                  |            |
|---------------------|------------------|------------------|------------|
| Jan. 1 to Oct. 31   |                  |                  |            |
| ('000 \$ CDN)       | 2013             | 2012             | % chg      |
| United States       | 747,844          | 781,752          | -4 %       |
| Hong Kong           | 133,583          | 61,003           |            |
| Mexico              | 73,682           | 102,607          | -28 %      |
| Japan               | 68,018           | 62,403           | 9 %        |
| China               | 18,731           | 3,347            |            |
| Egypt               | 2,662            | 2,987            | -11 %      |
| Saudi Arabia        | 12,224           | 879              |            |
| Macau               | 6,580            | 20               |            |
| Peru                | 1,044            | 0                |            |
| Angola              | 745              | 509              | 46 %       |
| South Korea         | 4,633            | 7,556            | -39 %      |
| Russia              | 1,718            | 13,947           | -88 %      |
| Suriname            | 2,673            | 2,341            | 14 %       |
| Cuba                | 3,117            | 2,734            | 14 %       |
| Philippines         | 2,175            | 2,623            | -17 %      |
| Others              | 20,359           | 18,522           | 10 %       |
| <b>TOTAL</b>        | <b>1,099,789</b> | <b>1,063,228</b> | <b>3 %</b> |

Source: Statistics Canada

**UNITED STATES**

Year To Date for the Week Ending November 23, 2013

|                                  | Weekly       | 2013            | 2012            | % chg       | Weekly                      | 2013 | 2012 | % chg         |
|----------------------------------|--------------|-----------------|-----------------|-------------|-----------------------------|------|------|---------------|
| <b>Slaughter ('000 head)</b>     |              |                 |                 |             | <b>Carcass Weight (lbs)</b> |      |      |               |
| Steers                           | 313.1        | 14,502.4        | 14,657.1        | -1 %        | Steers                      | 879  | 862  | 857 1 %       |
| Heifers                          | 166.7        | 8,274.8         | 8,394.3         | -1 %        | Heifers                     | 810  | 792  | 790 0 %       |
| Cows                             | 129.4        | 5,669.0         | 5,759.1         | -2 %        | Cows                        | 621  | 620  | 608 2 %       |
| Bulls                            | 11.7         | 509.5           | 497.5           | 2 %         | Bulls                       | 879  | 882  | 878 0 %       |
| <b>Total</b>                     | <b>620.9</b> | <b>28,955.7</b> | <b>29,308.0</b> | <b>-1 %</b> |                             |      |      |               |
| <b>Total (Jan. To Dec. 2012)</b> |              |                 | <b>32,336.9</b> |             |                             |      |      | Source : USDA |

**Beef Output (tonnes)**

|                                  |                   |                   |            |
|----------------------------------|-------------------|-------------------|------------|
| Fed                              | 8,664,328         | 8,723,908         | -1 %       |
| Non-Fed                          | 1,800,505         | 1,790,153         | 1 %        |
| <b>Total</b>                     | <b>10,464,832</b> | <b>10,514,061</b> | <b>0 %</b> |
| <b>Total (Jan. To Dec. 2012)</b> |                   | <b>11,615,011</b> |            |

**National Summary of Beef Graded**

|        | Oct 2013 | 2012   | 2011   |
|--------|----------|--------|--------|
| Prime  | 4.0 %    | 3.7 %  | 3.6 %  |
| Choice | 62.6 %   | 57.5 % | 65.2 % |
| Select | 32.9 %   | 30.3 % | 30.7 % |

**Cattle Slaughter for the Week Ending**

2013-11-23

| For the period  | Jan. - Oct. | 2013             | 2012             | % chg      | 2013                                 | 2012           | % chg              |
|---|-------------|------------------|------------------|------------|--------------------------------------|----------------|--------------------|
| <b>U.S. Beef and Veal Imports (carcass weight, ' 000 lbs)</b> |             |                  |                  |            |                                      |                |                    |
| Canada  |             | 448,834          | 480,038          | -7 %       | Canada                               | 48,220         | 45,799 5 %         |
| Australia   |             | 510,964          | 548,841          | -7 %       | US                                   | 620,901        | 581,072 7 %        |
| New Zealand   |             | 479,158          | 442,705          | 8 %        | <b>Total Canada &amp; US</b>         | <b>669,121</b> | <b>626,871 7 %</b> |
| Other   |             | 478,496          | 436,056          | 10 %       |                                      |                |                    |
| <b>Total</b>  |             | <b>1,917,452</b> | <b>1,907,640</b> | <b>1 %</b> | <b>Cattle Slaughter Year to Date</b> |                |                    |

**U.S. Beef and Veal Exports (carcass weight, ' 000 lbs)**

|              |                  |                  |            |
|--------------|------------------|------------------|------------|
| Mexico       | 321,984          | 305,252          | 5 %        |
| Canada       | 397,155          | 373,607          | 6 %        |
| Japan        | 577,717          | 393,155          | 47 %       |
| Other        | 842,859          | 983,740          | -14 %      |
| <b>Total</b> | <b>2,139,715</b> | <b>2,055,754</b> | <b>4 %</b> |

**Cattle Slaughter Year to Date**

|                              |                   |                   |             |
|------------------------------|-------------------|-------------------|-------------|
| Canada                       | 2,347,466         | 2,400,025         | -2 %        |
| US                           | 28,955,672        | 29,307,964        | -1 %        |
| <b>Total Canada &amp; US</b> | <b>31,303,138</b> | <b>31,707,989</b> | <b>-1 %</b> |

**US Live Cattle Imports**

|                                      |         |           |       |
|--------------------------------------|---------|-----------|-------|
| Mexico - Feeder (Jan 1-Dec. 2, 2013) | 829,077 | 1,319,353 | -37 % |
| Canada (Jan. 1 - Nov. 23, 2013)      | 972,443 | 731,638   | 33 %  |

**Canada and United States Beef and Veal Tariff Rate Quota Summary****US Beef and Veal Tariff Rate Quota (TRQ) Summary**

| YTD Week Ending Dec. 2, 2013  | 2013           |                |                | 2012           |             |             | 2013 VS 2012 |
|-------------------------------|----------------|----------------|----------------|----------------|-------------|-------------|--------------|
| Quota level                   | Tonnes entered | % filled       | Tonnes entered | % filled       |             |             |              |
| Australia                     | 378,214        | 178,105        | 47 %           | 195,071        | 52 %        | -9 %        |              |
| New Zealand                   | 213,402        | 158,957        | 74 %           | 147,996        | 69 %        | 7 %         |              |
| Argentina                     | 20,000         | 0              | 0 %            | 0              | 0 %         |             |              |
| Uruguay                       | 20,000         | 17,491         | 87 %           | 15,488         | 77 %        | 13 %        |              |
| Japan                         | 200            | 84             | 42 %           | 24             | 12 %        |             |              |
| Others                        | 64,805         | 37,540         | 58 %           | 44,864         | 69 %        | -16 %       |              |
| <b>Total TRQ</b>              | <b>696,621</b> | <b>392,177</b> | <b>56 %</b>    | <b>403,443</b> | <b>58 %</b> | <b>-3 %</b> |              |
| <b>TRQ (Australia, N. Z.)</b> | <b>591,616</b> | <b>337,062</b> | <b>57 %</b>    | <b>343,067</b> | <b>58 %</b> | <b>-2 %</b> |              |
| Canada                        | no limit       | 158,807        | n/a            | 169,444        | n/a         | -6 %        |              |
| Mexico                        | no limit       | 80,986         | n/a            | 78,993         | n/a         | 3 %         |              |

**Canadian Beef and Veal Import Permits by Country**

| YTD Week Ending Dec. 2, 2013 | 2013          | 2012          | % chg       |
|------------------------------|---------------|---------------|-------------|
| Global quota (tonnes)        | 76,409        | 76,409        | 0 %         |
| Supp. Quota Authorized       | -             | -             |             |
| <b>Total quota</b>           | <b>76,409</b> | <b>76,409</b> | <b>0 %</b>  |
| Permits issued               |               |               |             |
| New Zealand (29600 mt)       | 13,183        | 19,466        | -32 %       |
| Australia (35000 mt)         | 15,778        | 13,492        | 17 %        |
| Uruguay                      | 11,806        | 10,344        | 14 %        |
| Japan                        | 3             | 0             |             |
| <b>Total</b>                 | <b>40,770</b> | <b>43,302</b> | <b>-6 %</b> |

**Canadian Beef and Veal Import Permits by Type of Meat**

| YTD Dec. 2, 2013 | 2013 (tonnes)                      |               | Percentage of Total Imports |               |
|------------------|------------------------------------|---------------|-----------------------------|---------------|
|                  | Grinding Beef                      | Cuts          | 2013                        | 2012          |
| Japan            | 0                                  | 3             |                             |               |
| Australia        | 9,842                              | 5,936         | 14.6 %                      | 9.1 %         |
| New Zealand      | 5,652                              | 7,531         | 18.5 %                      | 23.7 %        |
| Uruguay          | 10,911                             | 894           | 2.2 %                       | 2.1 %         |
| <b>Total</b>     | <b>26,406</b>                      | <b>14,364</b> | <b>35.2 %</b>               | <b>34.9 %</b> |
|                  | <b>Percentage of Total Imports</b> |               |                             |               |
|                  | <b>Grinding Beef</b>               |               | <b>Cuts</b>                 |               |
|                  | 2013                               | 2012          | 2013                        | 2012          |
| Australia        | 24.1 %                             | 12.6 %        | 14.6 %                      | 9.1 %         |
| New Zealand      | 13.9 %                             | 16.4 %        | 18.5 %                      | 23.7 %        |
| Argentina        |                                    |               |                             |               |
| Uruguay          | 26.8 %                             | 19.3 %        | 2.2 %                       | 2.1 %         |
| <b>Total</b>     | <b>64.8 %</b>                      | <b>48.4 %</b> | <b>35.2 %</b>               | <b>34.9 %</b> |

Sources : Canadian Slaughter and Grading Data, CBGA, US Data: USDA, Canadian TRQ Data: DFAIT



**Beef Supply at a Glance**  
Year To Date for the Week Ending November 30, 2013

**Weekly Federally Inspected Slaughter**

|               | Fed Slaughter |         |           |             | Non-fed Slaughter |         |         |             | Total Canada |
|---------------|---------------|---------|-----------|-------------|-------------------|---------|---------|-------------|--------------|
|               | West          | East    | Canada    | Weekly Avg. | West              | East    | Canada  | Weekly Avg. |              |
| 2013-11-30    | 31,205        | 11,618  | 42,823    |             | 11,473            | 2,696   | 14,169  |             | 56,992       |
| 2013-11-23    | 25,252        | 9,990   | 35,242    |             | 10,568            | 2,410   | 12,978  |             | 48,220       |
| 2013-11-16    | 29,693        | 10,845  | 40,538    |             | 10,195            | 2,291   | 12,486  |             | 53,024       |
| 2013-11-09    | 29,075        | 10,289  | 39,364    |             | 10,021            | 2,128   | 12,149  |             | 51,513       |
| 2013-11-02    | 33,983        | 10,461  | 44,444    |             | 8,972             | 2,488   | 11,460  |             | 55,904       |
| 2013-10-26    | 27,871        | 10,797  | 38,668    |             | 7,864             | 1,869   | 9,733   |             | 48,401       |
| 2013-10-19    | 30,555        | 8,768   | 39,323    |             | 9,406             | 1,719   | 11,125  |             | 50,448       |
| 2013-10-12    | 32,104        | 11,150  | 43,254    |             | 7,876             | 1,813   | 9,689   |             | 52,943       |
| 2013-10-05    | 33,225        | 12,735  | 45,960    |             | 7,008             | 1,631   | 8,639   |             | 54,599       |
| 2013-09-28    | 34,009        | 11,527  | 45,536    |             | 6,761             | 1,465   | 8,226   |             | 53,762       |
| 2013-09-21    | 38,360        | 10,612  | 48,972    |             | 6,287             | 1,433   | 7,720   |             | 56,692       |
| 2013-09-14    | 33,391        | 10,729  | 44,120    |             | 5,929             | 1,424   | 7,353   |             | 51,473       |
| 2013-09-07    | 33,136        | 8,653   | 41,789    |             | 4,195             | 1,039   | 5,234   |             | 47,023       |
| 2013-08-31    | 36,102        | 11,137  | 47,239    |             | 4,180             | 1,605   | 5,785   |             | 53,024       |
| August 2013   | 132,749       | 39,384  | 172,133   | 43,033      | 22,682            | 6,630   | 29,312  | 7,328       | 201,445      |
| July 2013     | 127,118       | 41,123  | 168,241   | 42,060      | 22,389            | 6,049   | 28,438  | 7,110       | 196,679      |
| June 2013     | 149,357       | 54,963  | 204,320   | 40,864      | 25,649            | 8,168   | 33,817  | 6,763       | 238,137      |
| May 2013      | 131,026       | 42,211  | 173,237   | 43,309      | 23,723            | 5,228   | 28,951  | 7,238       | 202,188      |
| April 2013    | 136,709       | 45,396  | 182,105   | 45,526      | 23,738            | 6,313   | 30,051  | 7,513       | 212,156      |
| March 2013    | 162,105       | 48,960  | 211,065   | 42,213      | 30,814            | 9,815   | 40,629  | 8,126       | 251,694      |
| February 2013 | 115,609       | 33,933  | 149,542   | 37,386      | 33,082            | 8,796   | 41,878  | 10,470      | 191,420      |
| January 2013  | 97,992        | 33,151  | 131,143   | 32,786      | 35,396            | 10,182  | 45,578  | 11,395      | 176,721      |
| to date 2013  | 1,500,626     | 488,432 | 1,989,058 | 41,439      | 328,208           | 87,192  | 415,400 | 8,654       | 2,404,458    |
| Total 2012    | 1,659,439     | 525,503 | 2,184,942 | 42,018      | 284,541           | 141,670 | 426,211 | 8,196       | 2,611,153    |

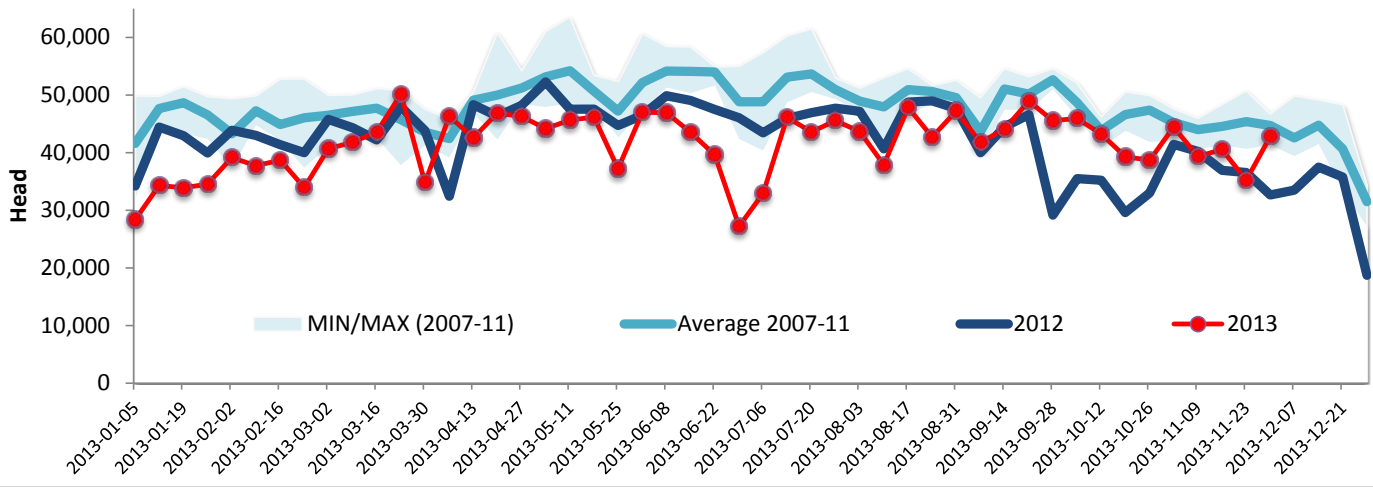
| Grading             | Weekly Totals November 30, 2013 |        |         |        |             |        |             |        |
|---------------------|---------------------------------|--------|---------|--------|-------------|--------|-------------|--------|
|                     | West                            | %      | East    | %      | Canada 2013 | %      | Canada 2012 | %      |
| A - Prime           | 466                             | 1.5 %  | 317     | 2.7 %  | 783         | 1.8 %  | 472         | 1.4 %  |
| AAA                 | 17,356                          | 55.9 % | 6,704   | 56.6 % | 24,060      | 56.1 % | 18,409      | 56.4 % |
| AA                  | 12,134                          | 39.1 % | 4,018   | 33.9 % | 16,152      | 37.7 % | 12,423      | 38.1 % |
| A                   | 523                             | 1.7 %  | 302     | 2.6 %  | 825         | 1.9 %  | 654         | 2.0 %  |
| B1, 2, 3, 4         | 569                             | 1.8 %  | 499     | 4.2 %  | 1,068       | 2.5 %  | 688         | 2.1 %  |
| <b>Year-to-date</b> |                                 |        |         |        |             |        |             |        |
|                     | West                            | %      | East    | %      | Canada 2013 | %      | Canada 2012 | %      |
| A - Prime           | 21,135                          | 1.4 %  | 10,312  | 2.1 %  | 31,447      | 1.6 %  | 22,583      | 1.1 %  |
| AAA                 | 826,073                         | 55.1 % | 268,509 | 54.2 % | 1,094,582   | 54.9 % | 1,124,941   | 54.5 % |
| AA                  | 601,649                         | 40.1 % | 184,113 | 37.2 % | 785,762     | 39.4 % | 835,064     | 40.5 % |
| A                   | 26,737                          | 1.8 %  | 14,058  | 2.8 %  | 40,795      | 2.0 %  | 42,178      | 2.0 %  |
| B1, 2, 3, 4         | 23,142                          | 1.5 %  | 18,339  | 3.7 %  | 41,481      | 2.1 %  | 37,798      | 1.8 %  |



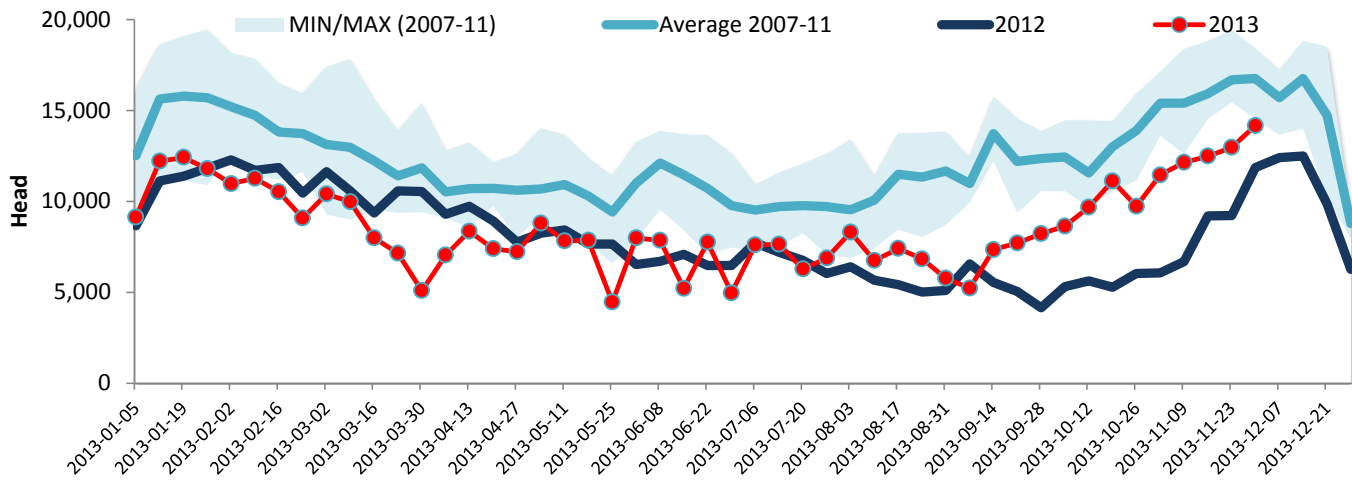
Year To Date for the Week Ending November 30, 2013

Federally Inspected Slaughter

### Canadian Fed Slaughter



### Canadian Non-Fed Slaughter



### Total Cattle Slaughter in Canada

