



Beef Supply at a Glance - CANADA

Year To Date for the Week Ending May 18, 2013

Federally Inspected Slaughter (head)	West			East			CANADA		
	2013	2012	% chg	2013	2012	% chg	2013	2012	% chg
Steers	341,308	353,921	-4 %	135,738	131,397	3 %	477,046	485,318	-2 %
Heifers	273,599	322,760	-15 %	59,198	68,760	-14 %	332,797	391,520	-15 %
Cows	142,566	118,093	21 %	38,741	77,301	-50 %	181,307	195,394	-7 %
Bulls	1,102	5,340	-79 %	212	1,443	-85 %	1,314	6,783	-81 %
Total	758,575	800,114	-5 %	233,889	278,901	-16 %	992,464	1,079,015	-8 %
Carcass Weight (lbs)									
Steers	876	873	0 %	910	894	2 %	885	879	1 %
Heifers	829	830	0 %	818	805	2 %	827	825	0 %
Cows	680	704	-3 %	654	631	4 %	675	676	0 %
Bulls	939	1,034	-9 %	918	937	-2 %	936	1,013	-8 %
Beef Output (tonnes)									
Fed	239,000	262,211	-9 %	78,157	78,555	-1 %	317,004	340,727	-7 %
Non-Fed	44,536	40,300	11 %	11,605	22,786	-49 %	56,187	63,163	-11 %
Total	283,536	302,510	-6 %	89,762	101,341	-11 %	373,191	403,889	-8 %

Source: Canadian Beef Grading Agency

EXPORTS				IMPORTS				
For the period Jan. 1 - May 11, 2013				For the period Jan. 1 - March 31, 2013				
	2013	2012	% chg	(# of head)	2013	2012	% chg	
Live Cattle				Live Cattle	pure bred	789	1,006	-22 %
slaughter steers & heifers	169,951	162,033	5 %	From U.S.	non pure bred	7,468	12,429	-40 %
feeder cattle & calves	136,907	76,810	78 %	Total	8,257	13,435	-39 %	
cows & bulls	139,495	66,761	109 %	Source: Statistics Canada				
others*	5,127	3,725	38 %	For the period Jan. 1 - May 18, 2013				
Total	451,480	309,329	46 %	Beef and Veal	2013	2012	% chg	
* = breeding and others				(tonnes) preliminary				
Source: USDA - APHIS				United States	63,616	58,093	10 %	
Beef & Veal Exports to US	2013	2012	% chg	New Zealand	5,780	10,553	-45 %	
(Tonnes) Jan. 1 - March 31				Australia	5,666	5,033	13 %	
Fresh/chilled cuts	39,569	55,933	-29 %	Uruguay	7,166	4,696	53 %	
Frozen cuts	5,592	3,919	43 %	Others	677	998	-32 %	
Offals	2,938	3,801	-23 %	Total	82,906	79,373	4 %	
Processed	207	278	-26 %	Non-NAFTA Beef/Veal total	18,401	20,163	-9 %	
TOTAL	48,305	63,931	-24 %	Fresh, chilled & frozen (H.S. 0201, 0202)				
Exports (Jan. 1 - Dec. 31)		197,378		Source: CFIA				
Source: Statistics Canada								

Beef & Veal Exports	Jan. 1 to March 31		
(Tonnes)	2013	2012	% chg
United States	48,305	63,931	-24 %
Hong Kong	6,067	5,671	7 %
Mexico	2,734	6,634	-59 %
Japan	2,016	1,737	16 %
Macao	742	0	
Saudi Arabia	348	0	
China	851	47	
South Korea	423	89	
Viet Nam	308	118	
Suriname	181	139	30 %
Cuba	97	187	-48 %
United Arab Emirates	88	71	23 %
Egypt	472	507	-7 %
United Kingdom	74	0	
Italy	68	57	20 %
Others	1,888	2,991	-37 %
TOTAL	64,663	82,179	-21 %

Source: Statistics Canada

Beef & Veal Exports	Jan. 1 to March 31		
('000 \$ CDN)	2013	2012	% chg
United States	210,639	273,921	-23 %
Hong Kong	37,253	22,282	67 %
Mexico	15,739	33,363	-53 %
Japan	10,369	10,751	-4 %
Macao	4,252	3	
Saudi Arabia	3,138	0	
China	2,853	178	
South Korea	1,828	490	
Viet Nam	1,715	374	
Suriname	946	581	63 %
Cuba	911	1,639	-44 %
United Arab Emirates	823	398	
Egypt	734	889	-17 %
United Kingdom	720	0	
Italy	594	490	21 %
Others	4,792	10,075	-52 %
TOTAL	297,307	355,437	-16 %

Source: Statistics Canada



Year To Date for the Week Ending May 11, 2013

	Weekly	2013	2012	% chg		Weekly	2013	2012	% chg
Slaughter ('000 head)					Carcass Weight (lbs)				
Steers	325.5	5,561.1	5,618.6	-1 %	Steers	842	859	846	2 %
Heifers	168.6	3,325.6	3,480.2	-4 %	Heifers	773	796	787	1 %
Cows	123.9	2,349.9	2,283.4	3 %	Cows	617	623	618	1 %
Bulls	11.2	187.4	191.1	-2 %	Bulls	892	884	880	0 %
Total	629.2	11,424.0	11,573.3	-1 %					
Total (Jan. To Dec. 2012)			32,336.9						

Source : USDA

Beef Output (tonnes)

Fed	3,374,314	3,405,570	-1 %
Non-Fed	740,519	717,868	3 %
Total	4,114,833	4,123,437	0 %
Total (Jan. To Dec. 2012)		11,615,011	

National Summary of Beef Graded

	Apr 2013	2012	2011
Prime	4.4 %	3.6 %	3.6 %
Choice	67.4 %	65.2 %	65.2 %
Select	27.9 %	30.8 %	30.7 %

Cattle Slaughter for the Week Ending

2013-05-11

For the period	Jan. - Mar.	2013	2012	% chg		2013	2012	% chg	
U.S. Beef and Veal Imports (carcass weight, ' 000 lbs)					Cattle Slaughter Year to Date				
Canada		132	178	-25 %	Canada	53,509	56,001	-4 %	
Australia		136	145	-6 %	US	629,200	641,400	-2 %	
New Zealand		166	129	28 %	Total Canada & US	682,709	697,401	-2 %	
Other		156	130	20 %					
Total		590	582	1 %					

U.S. Beef and Veal Exports (carcass weight, ' 000 lbs)

Mexico	74	110	-32 %
Canada	118	90	30 %
Japan	112	88	26 %
Other	254	270	-6 %
Total	557	558	0 %

US Live Cattle Imports

Mexico - Feeder (Jan 1-May 18, 2013)	429,371	715,161	-40 %
Canada (Jan. 1 - May 11, 2013)	451,480	309,329	46 %

Canada and United States Beef and Veal Tariff Rate Quota Summary

US Beef and Veal Tariff Rate Quota (TRQ) Summary

YTD Week Ending May 20, 2013	2013			2012		
Quota level	Tonnes entered	% filled	Tonnes entered	% filled	2013 VS 2012	
Australia	378,214	64,943	17 %	77,939	21%	-17 %
New Zealand	213,402	80,323	38 %	62,542	29%	28 %
Argentina	20,000	0	0 %	0	0%	
Uruguay	20,000	9,080	45 %	6,418	32%	41 %
Japan	200	30	15 %	0	0%	
Others	64,805	17,021	26 %	18,825	29%	-10 %
Total TRQ	696,621	171,397	25 %	165,724	24%	3 %
TRQ (Australia, N. Z.)	591,616	145,266	25 %	140,481	24%	3 %
Canada	no limit	64,925	n/a	81,580	n/a	-20 %
Mexico	no limit	34,426	n/a	27,410	n/a	26 %

Canadian Beef and Veal Import Permits by Country

YTD Week Ending May 18, 2013	2013	2012	% chg
Global quota (tonnes)	76,409	76,409	0 %
Supp. Quota Authorized	-	-	
Total quota	76,409	76,409	0 %
Permits issued			
New Zealand (29600 mt)	6,274	10,967	-43 %
Australia (35000 mt)	6,181	4,866	27 %
Uruguay	7,603	4,838	57 %
Japan	1	0	
Total	20,059	20,671	-3 %

Canadian Beef and Veal Import Permits by Type of Meat

YTD May 18, 2013	2013 (tonnes)		Total Total (%)	
	Grinding Beef	Cuts	2013	2012
Japan	0	1	1	0 %
Australia	3,068	3,113	6,181	31 %
New Zealand	2,568	3,706	6,274	31 %
Uruguay	7,240	363	7,603	38 %
Total	12,876	7,183	20,059	100 %
Percentage of Total Imports				
	Grinding Beef		Cuts	
	2013	2012	2013	2012
Australia	15.3 %	14.9 %	15.5 %	8.6 %
New Zealand	12.8 %	22.3 %	18.5 %	30.7 %
Argentina				
Uruguay	36.1 %	20.8 %	1.8 %	2.6 %
Total	64.2 %	58.1 %	35.8 %	41.9 %

Sources : Canadian Slaughter and Grading Data, CBGA, US Data: USDA, Canadian TRQ Data: DFAIT



Beef Supply at a Glance

Year To Date for the Week Ending May 18, 2013

Weekly Federally Inspected Slaughter

	Fed Slaughter				Non-fed Slaughter				Total Canada
	West	East	Canada	Weekly Avg.	West	East	Canada	Weekly Avg.	
2013-05-18	35,017	11,138	46,155		6,458	1,396	7,854		54,009
2013-05-11	34,367	11,314	45,681		6,652	1,176	7,828		53,509
2013-05-04	33,108	11,044	44,152		7,528	1,275	8,803		52,955
2013-04-27	35,189	11,070	46,259		5,817	1,413	7,230		53,489
2013-04-20	34,969	11,924	46,893		5,901	1,504	7,405		54,298
2013-04-13	31,978	10,607	42,585		6,614	1,751	8,365		50,950
2013-04-06	34,573	11,795	46,368		5,406	1,645	7,051		53,419
2013-03-30	26,439	8,369	34,808		3,478	1,619	5,097		39,905
2013-03-23	39,704	10,457	50,161		5,202	1,949	7,151		57,312
2013-03-16	33,411	10,132	43,543		6,013	1,980	7,993		51,536
2013-03-09	31,856	9,997	41,853		7,923	2,060	9,983		51,836
2013-03-02	30,695	10,005	40,700		8,198	2,207	10,405		51,105
2013-02-23	26,071	7,903	33,974		7,071	2,023	9,094		43,068
2013-02-16	30,036	8,665	38,701		8,454	2,079	10,533		49,234
2013-02-09	27,960	9,746	37,706		9,134	2,138	11,272		48,978
2013-02-02	31,542	7,619	39,161		8,423	2,556	10,979		50,140
January 2013	97,992	33,151	131,143	32,786	35,396	10,182	45,578	11,395	176,721
December 2012	112,442	45,782	158,224	31,645	40,972	11,932	52,904	10,581	211,128
November 2012	110,962	44,226	155,188	38,797	21,653	9,536	31,189	7,797	186,377
October 2012	88,401	44,977	133,378	33,345	14,947	7,324	22,271	5,568	155,649
September 2012	155,560	52,350	207,910	41,582	18,398	8,020	26,418	5,284	234,328
August 2012	145,455	40,151	185,606	46,402	16,472	5,977	22,449	5,612	208,055
July 2012	144,623	39,432	184,055	46,014	20,769	7,061	27,830	6,958	211,885
June 2012	189,338	49,697	239,035	47,807	23,060	10,253	33,313	6,663	272,348
May 2012	151,522	40,598	192,120	48,030	18,765	13,246	32,011	8,003	224,131
April 2012	136,434	38,963	175,397	43,849	21,529	14,214	35,743	8,936	211,140
March 2012	170,035	54,134	224,169	44,834	33,164	19,548	52,712	10,542	276,881
to date 2013	614,907	194,936	809,843	40,492	143,668	38,953	182,621	9,131	992,464
Total 2012	1,659,439	525,503	2,184,942	42,018	284,541	141,670	426,211	8,196	2,611,153

Source : Canadian Beef Grading Agency

Grading								
	Weekly Totals				May 18, 2013			
	West	%	East	%	Canada 2013	%	Canada 2012	%
A - Prime	682	1.9 %	209	1.9 %	891	1.9 %	605	1.3 %
AAA	19,949	57.0 %	6,389	57.4 %	26,338	57.1 %	27,435	57.7 %
AA	13,274	37.9 %	4,025	36.2 %	17,299	37.5 %	17,907	37.7 %
A	561	1.6 %	248	2.2 %	809	1.8 %	894	1.9 %
B1, 2, 3, 4	514	1.5 %	252	2.3 %	766	1.7 %	692	1.5 %
	Year-to-date				Canada 2013			
	West	%	East	%	Canada 2013	%	Canada 2012	%
A - Prime	12,301	2.0 %	4,282	2.2 %	16,583	2.0 %	10,894	1.2 %
AAA	379,068	61.6 %	111,149	56.2 %	490,217	60.3 %	506,885	57.6 %
AA	211,246	34.4 %	70,080	35.4 %	281,326	34.6 %	335,762	38.2 %
A	5,993	1.0 %	5,127	2.6 %	11,120	1.4 %	12,916	1.5 %
B1, 2, 3, 4	6,323	1.0 %	7,145	3.6 %	13,468	1.7 %	12,836	1.5 %

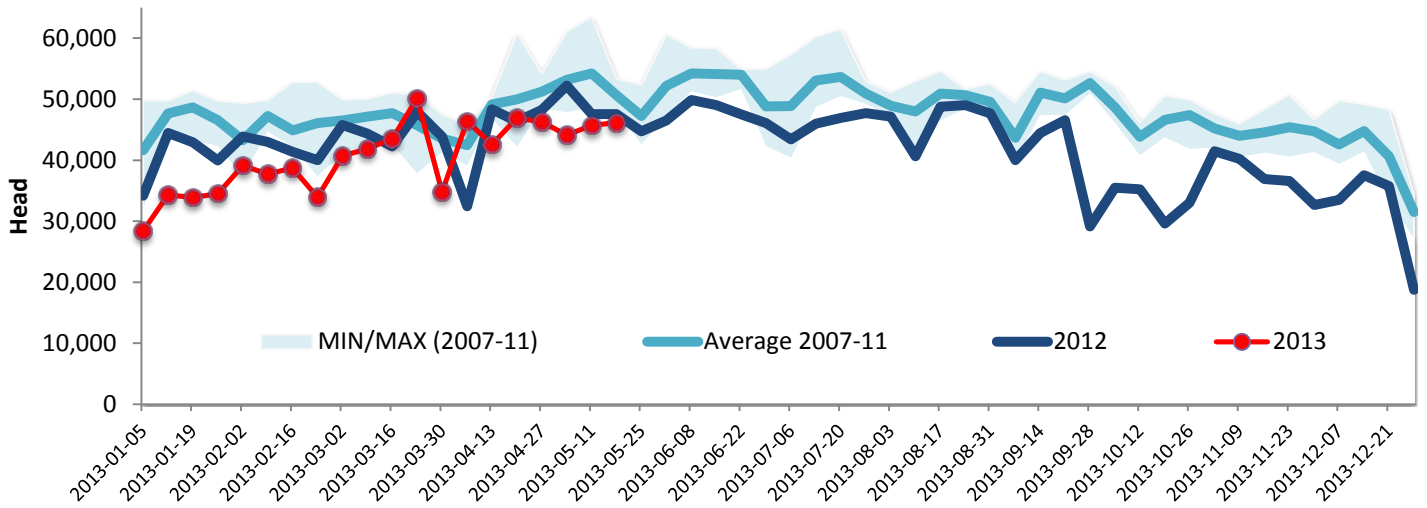
Source : Canadian Beef Grading Agency



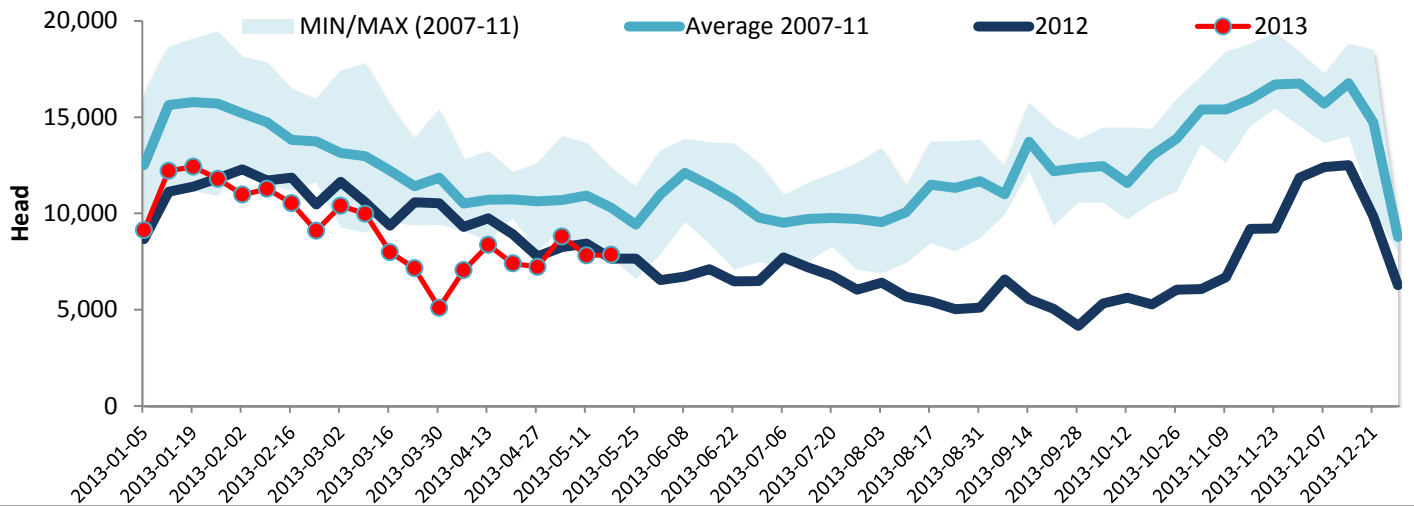
Year To Date for the Week Ending May 18, 2013

Federally Inspected Slaughter

Canadian Fed Slaughter



Canadian Non-Fed Slaughter



Total Cattle Slaughter in Canada

