



Beef Supply at a Glance - CANADA

Year To Date for the Week Ending May 11, 2013

Federally Inspected Slaughter (head)	West			East			CANADA		
	2013	2012	% chg	2013	2012	% chg	2013	2012	% chg
Steers	321,035	333,728	-4 %	129,277	125,350	3 %	450,312	459,078	-2 %
Heifers	258,855	305,945	-15 %	54,521	64,231	-15 %	313,376	370,176	-15 %
Cows	136,236	113,972	20 %	37,352	74,109	-50 %	173,588	188,081	-8 %
Bulls	974	5,090	-81 %	205	1,345	-85 %	1,179	6,435	-82 %
Total	717,100	758,735	-5 %	221,355	265,035	-16 %	938,455	1,023,770	-8 %
Carcass Weight (lbs)									
Steers	877	875	0 %	910	894	2 %	886	880	1 %
Heifers	830	831	0 %	818	804	2 %	828	826	0 %
Cows	680	704	-3 %	654	630	4 %	675	676	0 %
Bulls	940	1,034	-9 %	918	932	-2 %	936	1,013	-8 %
Beef Output (tonnes)									
Fed	225,635	248,296	-9 %	73,746	74,411	-1 %	299,296	322,615	-7 %
Non-Fed	42,525	38,863	9 %	11,189	21,792	-49 %	53,762	60,755	-12 %
Total	268,161	287,160	-7 %	84,935	96,203	-12 %	353,058	383,371	-8 %

Source: Canadian Beef Grading Agency

EXPORTS			
For the period Jan. 1 - May 4, 2013			
Live Cattle	2013	2012	% chg
slaughter steers & heifers	161,313	155,301	4 %
feeder cattle & calves	131,929	71,955	83 %
cows & bulls	133,627	63,693	110 %
others*	4,933	3,562	38 %
Total	431,802	294,511	47 %

* = breeding and others

Source: USDA - APHIS

Beef & Veal Exports to US			
(Tonnes) Jan. 1 - March 31			
	2013	2012	% chg
Fresh/chilled cuts	39,569	55,933	-29 %
Frozen cuts	5,592	3,919	43 %
Offals	2,938	3,801	-23 %
Processed	207	278	-26 %
TOTAL	48,305	63,931	-24 %
Exports (Jan. 1 - Dec. 31)		197,378	

Source: Statistics Canada

Beef & Veal Exports			
Jan. 1 to March 31			
(Tonnes)	2013	2012	% chg
United States	48,305	63,931	-24 %
Hong Kong	6,067	5,671	7 %
Mexico	2,734	6,634	-59 %
Japan	2,016	1,737	16 %
Macao	742	0	
Saudi Arabia	348	0	
China	851	47	
South Korea	423	89	
Viet Nam	308	118	
Suriname	181	139	30 %
Cuba	97	187	-48 %
United Arab Emirates	88	71	23 %
Egypt	472	507	-7 %
United Kingdom	74	0	
Italy	68	57	20 %
Others	1,888	2,991	-37 %
TOTAL	64,663	82,179	-21 %

Source: Statistics Canada

IMPORTS			
For the period Jan. 1 - March 31, 2013			
(# of head)	2013	2012	% chg
Live Cattle pure bred	789	1,006	-22 %
From U.S. non pure bred	7,468	12,429	-40 %
Total	8,257	13,435	-39 %

Source: Statistics Canada

Beef and Veal			
(tonnes) preliminary			
	2013	2012	% chg
United States	60,082	55,297	9 %
New Zealand	5,570	10,264	-46 %
Australia	5,470	4,951	10 %
Uruguay	7,097	4,568	55 %
Others	677	964	-30 %
Total	78,896	76,044	4 %
Non-NAFTA Beef/Veal total	17,925	19,664	-9 %
Fresh, chilled & frozen (H.S. 0201, 0202)			

Source: CFIA

Beef & Veal Exports			
Jan. 1 to March 31			
('000 \$ CDN)	2013	2012	% chg
United States	210,639	273,921	-23 %
Hong Kong	37,253	22,282	67 %
Mexico	15,739	33,363	-53 %
Japan	10,369	10,751	-4 %
Macao	4,252	3	
Saudi Arabia	3,138	0	
China	2,853	178	
South Korea	1,828	490	
Viet Nam	1,715	374	
Suriname	946	581	63 %
Cuba	911	1,639	-44 %
United Arab Emirates	823	398	
Egypt	734	889	-17 %
United Kingdom	720	0	
Italy	594	490	21 %
Others	4,792	10,075	-52 %
TOTAL	297,307	355,437	-16 %

Source: Statistics Canada



Year To Date for the Week Ending May 4, 2013

	Weekly	2013	2012	% chg	Weekly	2013	2012	% chg
Slaughter ('000 head)					Carcass Weight (lbs)			
Steers	311.2	5,235.6	5,283.5	-1 %	Steers	839	860	1 %
Heifers	173.7	3,157.0	3,300.8	-4 %	Heifers	772	798	1 %
Cows	125.9	2,226.0	2,167.1	3 %	Cows	622	623	1 %
Bulls	11.5	176.2	180.5	-2 %	Bulls	891	883	0 %
Total	622.3	10,794.8	10,931.9	-1 %				
Total (Jan. To Dec. 2012)			32,336.9					

Source : USDA

Beef Output (tonnes)

Fed	3,190,248	3,216,434	-1 %
Non-Fed	701,216	680,958	3 %
Total	3,891,464	3,897,392	0 %
Total (Jan. To Dec. 2012)		11,615,011	

National Summary of Beef Graded

	Mar 2013	2012	2011
Prime	4.7 %	3.6 %	3.6 %
Choice	68.3 %	65.2 %	65.2 %
Select	26.7 %	30.8 %	30.7 %

Cattle Slaughter for the Week Ending

2013-05-04

For the period	Jan. - Mar.	2013	2012	% chg
U.S. Beef and Veal Imports (carcass weight, ' 000 lbs)				
Canada		132	178	-25 %
Australia		136	145	-6 %
New Zealand		166	129	28 %
Other		156	130	20 %
Total		590	582	1 %

	2013	2012	% chg
Canada	52,955	60,517	-12 %
US	622,300	627,200	-1 %
Total Canada & US	675,255	687,717	-2 %

Cattle Slaughter Year to Date

Canada	884,946	967,769	-9 %
US	10,794,800	10,931,900	-1 %
Total Canada & US	11,679,746	11,899,669	-2 %

U.S. Beef and Veal Exports (carcass weight, ' 000 lbs)

Mexico	74	110	-32 %
Canada	118	90	30 %
Japan	112	88	26 %
Other	254	270	-6 %
Total	557	558	0 %

US Live Cattle Imports

Mexico - Feeder (Jan 1-May 11, 2013)	413,697	666,071	-38 %
Canada (Jan. 1 - May 4, 2013)	431,802	294,511	47 %

Canada and United States Beef and Veal Tariff Rate Quota Summary

US Beef and Veal Tariff Rate Quota (TRQ) Summary

YTD Week Ending May 13, 2013	2013			2012			2013 VS 2012
	Quota level	Tonnes entered	% filled	Tonnes entered	% filled		
Australia	378,214	61,407	16 %	68,544	18%		-10 %
New Zealand	213,402	76,063	36 %	57,417	27%		32 %
Argentina	20,000	0	0 %	0	0%		
Uruguay	20,000	8,772	44 %	5,789	29%		52 %
Japan	200	29	14 %	0	0%		
Others	64,805	16,511	25 %	17,755	27%		-7 %
Total TRQ	696,621	162,783	23 %	149,505	21%		9 %
TRQ (Australia, N. Z.)	591,616	137,470	23 %	125,961	21%		9 %
Canada	no limit	61,009	n/a	77,222	n/a		-21 %
Mexico	no limit	32,589	n/a	25,797	n/a		26 %

Canadian Beef and Veal Import Permits by Country

YTD Week Ending May 11, 2013	2013	2012	% chg
Global quota (tonnes)	76,409	76,409	0 %
Supp. Quota Authorized	-	-	
Total quota	76,409	76,409	0 %
Permits issued			
New Zealand (29600 mt)	5,764	10,609	-46 %
Australia (35000 mt)	5,964	4,772	25 %
Uruguay	7,167	4,724	52 %
Japan	1	0	
Total	18,895	20,105	-6 %

Canadian Beef and Veal Import Permits by Type of Meat

YTD May 11, 2013	2013 (tonnes)		Total Total (%)	
	Grinding Beef	Cuts	2013	2012
Japan	0	1	1	0 %
Australia	2,891	3,072	5,964	32 %
New Zealand	2,265	3,499	5,764	31 %
Uruguay	6,804	363	7,167	38 %
Total	11,960	6,935	18,895	100 %
	Percentage of Total Imports			
	Grinding Beef		Cuts	
	2013	2012	2013	2012
Australia	15.3 %	13.7 %	16.3 %	7.7 %
New Zealand	12.0 %	21.1 %	18.5 %	29.7 %
Argentina				
Uruguay	36.0 %	18.8 %	1.9 %	2.6 %
Total	63.3 %	53.6 %	36.7 %	40.0 %



Beef Supply at a Glance

Year To Date for the Week Ending May 11, 2013

Weekly Federally Inspected Slaughter

	Fed Slaughter				Non-fed Slaughter				Total Canada
	West	East	Canada	Weekly Avg.	West	East	Canada	Weekly Avg.	
2013-05-11	34,367	11,314	45,681		6,652	1,176	7,828		53,509
2013-05-04	33,108	11,044	44,152		7,528	1,275	8,803		52,955
2013-04-27	35,189	11,070	46,259		5,817	1,413	7,230		53,489
2013-04-20	34,969	11,924	46,893		5,901	1,504	7,405		54,298
2013-04-13	31,978	10,607	42,585		6,614	1,751	8,365		50,950
2013-04-06	34,573	11,795	46,368		5,406	1,645	7,051		53,419
2013-03-30	26,439	8,369	34,808		3,478	1,619	5,097		39,905
2013-03-23	39,704	10,457	50,161		5,202	1,949	7,151		57,312
2013-03-16	33,411	10,132	43,543		6,013	1,980	7,993		51,536
2013-03-09	31,856	9,997	41,853		7,923	2,060	9,983		51,836
2013-03-02	30,695	10,005	40,700		8,198	2,207	10,405		51,105
2013-02-23	26,071	7,903	33,974		7,071	2,023	9,094		43,068
2013-02-16	30,036	8,665	38,701		8,454	2,079	10,533		49,234
2013-02-09	27,960	9,746	37,706		9,134	2,138	11,272		48,978
2013-02-02	31,542	7,619	39,161		8,423	2,556	10,979		50,140
January 2013	97,992	33,151	131,143	32,786	35,396	10,182	45,578	11,395	176,721
December 2012	112,442	45,782	158,224	31,645	40,972	11,932	52,904	10,581	211,128
November 2012	110,962	44,226	155,188	38,797	21,653	9,536	31,189	7,797	186,377
October 2012	88,401	44,977	133,378	33,345	14,947	7,324	22,271	5,568	155,649
September 2012	155,560	52,350	207,910	41,582	18,398	8,020	26,418	5,284	234,328
August 2012	145,455	40,151	185,606	46,402	16,472	5,977	22,449	5,612	208,055
July 2012	144,623	39,432	184,055	46,014	20,769	7,061	27,830	6,958	211,885
June 2012	189,338	49,697	239,035	47,807	23,060	10,253	33,313	6,663	272,348
May 2012	151,522	40,598	192,120	48,030	18,765	13,246	32,011	8,003	224,131
April 2012	136,434	38,963	175,397	43,849	21,529	14,214	35,743	8,936	211,140
March 2012	170,035	54,134	224,169	44,834	33,164	19,548	52,712	10,542	276,881
to date 2013	579,890	183,798	763,688	40,194	137,210	37,557	174,767	9,198	938,455
Total 2012	1,659,439	525,503	2,184,942	42,018	284,541	141,670	426,211	8,196	2,611,153

Source : Canadian Beef Grading Agency

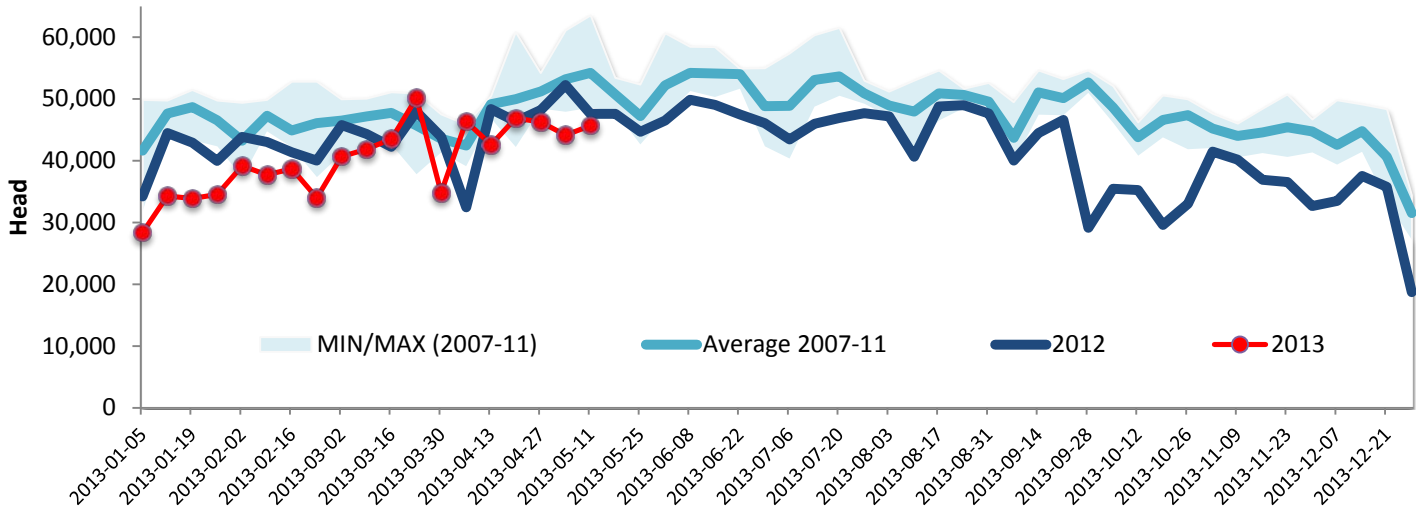
Grading								
	Weekly Totals				May 11, 2013		Canada 2012	
	West	%	East	%	Canada 2013	%	Canada 2012	%
A - Prime	1,047	3.0 %	265	2.3 %	1,312	2.9 %	649	1.4 %
AAA	21,136	61.6 %	6,720	59.4 %	27,856	61.0 %	28,593	60.1 %
AA	11,262	32.8 %	3,918	34.6 %	15,180	33.3 %	16,719	35.2 %
A	405	1.2 %	208	1.8 %	613	1.3 %	837	1.8 %
B1, 2, 3, 4	480	1.4 %	204	1.8 %	684	1.5 %	742	1.6 %
Year-to-date								
	West	%	East	%	Canada 2013	%	Canada 2012	%
A - Prime	11,619	2.0 %	4,073	2.2 %	15,692	2.0 %	10,289	1.2 %
AAA	359,119	61.9 %	104,760	56.1 %	463,879	60.5 %	479,450	57.6 %
AA	197,972	34.1 %	66,055	35.4 %	264,027	34.4 %	317,855	38.2 %
A	5,432	0.9 %	4,879	2.6 %	10,311	1.3 %	12,022	1.4 %
B1, 2, 3, 4	5,809	1.0 %	6,893	3.7 %	12,702	1.7 %	12,144	1.5 %



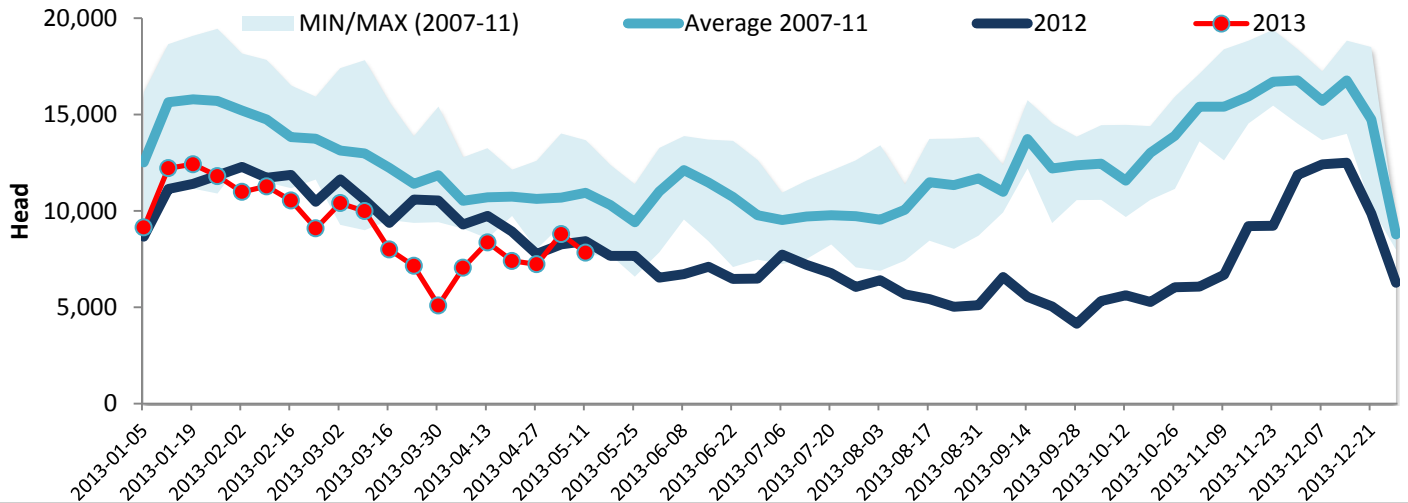
Year To Date for the Week Ending May 11, 2013

Federally Inspected Slaughter

Canadian Fed Slaughter



Canadian Non-Fed Slaughter



Total Cattle Slaughter in Canada

