



Beef Supply at a Glance - CANADA

Year to Date for the Week Ending May 4, 2013

Federally Inspected Slaughter (head)	West			East			CANADA		
	2013	2012	% chg	2013	2012	% chg	2013	2012	% chg
Steers	306,448	312,673	-2 %	122,575	118,640	3 %	429,023	431,313	-1 %
Heifers	239,075	289,925	-18 %	49,909	60,447	-17 %	288,984	350,372	-18 %
Cows	129,681	109,508	18 %	36,181	70,513	-49 %	165,862	180,021	-8 %
Bulls	877	4,802	-82 %	200	1,261	-84 %	1,077	6,063	-82 %
Total	676,081	716,908	-6 %	208,865	250,861	-17 %	884,946	967,769	-9 %
Carcass Weight (lbs)									
Steers	878	876	0 %	910	894	2 %	887	881	1 %
Heifers	831	831	0 %	818	806	1 %	829	827	0 %
Cows	680	704	-3 %	654	630	4 %	674	676	0 %
Bulls	940	1,034	-9 %	920	934	-1 %	936	1,013	-8 %
Beef Output (tonnes)									
Fed	212,606	234,013	-9 %	69,259	70,357	-2 %	281,869	304,429	-7 %
Non-Fed	40,458	37,300	8 %	10,839	20,728	-48 %	51,272	58,107	-12 %
Total	253,064	271,313	-7 %	80,098	91,084	-12 %	333,141	362,537	-8 %

Source: Canadian Beef Grading Agency

EXPORTS	For the period Jan. 1 - April 27, 2013		
Live Cattle	2013	2012	% chg
slaughter steers & heifers	152,542	148,116	3 %
feeder cattle & calves	121,779	67,314	81 %
cows & bulls	126,361	59,998	111 %
others*	4,682	3,471	35 %
Total	405,364	278,899	45 %

* = breeding and others

Source: USDA - APHIS

Beef & Veal Exports to US	2013	2012	% chg
(Tonnes) Jan. 1 - March 31			
Fresh/chilled cuts	39,569	55,933	-29 %
Frozen cuts	5,592	3,919	43 %
Offals	2,938	3,801	-23 %
Processed	207	278	-26 %
TOTAL	48,305	63,931	-24 %
Exports (Jan. 1 - Dec. 31)		197,378	

Source: Statistics Canada

Beef & Veal Exports	Jan. 1 to March 31		
(Tonnes)	2013	2012	% chg
United States	48,305	63,931	-24 %
Hong Kong	6,067	5,671	7 %
Mexico	2,734	6,634	-59 %
Japan	2,016	1,737	16 %
Macao	742	0	
Saudi Arabia	348	0	
China	851	47	
South Korea	423	89	
Viet Nam	308	118	
Suriname	181	139	30 %
Cuba	97	187	-48 %
United Arab Emirates	88	71	23 %
Egypt	472	507	-7 %
United Kingdom	74	0	
Italy	68	57	20 %
Others	1,888	2,991	-37 %
TOTAL	64,663	82,179	-21 %

Source: Statistics Canada

IMPORTS	For the period Jan. 1 - March 31, 2013		
(# of head)	2013	2012	% chg
Live Cattle pure bred	789	1,006	-22 %
From U.S. non pure bred	7,468	12,429	-40 %
Total	8,257	13,435	-39 %

Source: Statistics Canada

Beef and Veal	2013	2012	% chg
(tonnes) preliminary			
United States	56,947	52,038	9 %
New Zealand	5,234	10,035	-48 %
Australia	5,114	4,574	12 %
Uruguay	6,688	4,285	56 %
Others	613	913	-33 %
Total	74,597	71,845	4 %
Non-NAFTA Beef/Veal total	16,842	18,786	-10 %
Fresh, chilled & frozen (H.S. 0201, 0202)			

Source: CFIA

Beef & Veal Exports	Jan. 1 to March 31		
('000 \$ CDN)	2013	2012	% chg
United States	210,639	273,921	-23 %
Hong Kong	37,253	22,282	67 %
Mexico	15,739	33,363	-53 %
Japan	10,369	10,751	-4 %
Macao	4,252	3	
Saudi Arabia	3,138	0	
China	2,853	178	
South Korea	1,828	490	
Viet Nam	1,715	374	
Suriname	946	581	63 %
Cuba	911	1,639	-44 %
United Arab Emirates	823	398	
Egypt	734	889	-17 %
United Kingdom	720	0	
Italy	594	490	21 %
Others	4,792	10,075	-52 %
TOTAL	297,307	355,437	-16 %

Source: Statistics Canada



Year To Date for the Week Ending April 27, 2013

	Weekly	2013	2012	% chg		Weekly	2013	2012	% chg
Slaughter ('000 head)					Carcass Weight (lbs)				
Steers	312.9	4,824.4	4,963.1	-3 %	Steers	840	861	848	2 %
Heifers	175.0	2,983.3	3,118.2	-4 %	Heifers	775	799	789	1 %
Cows	126.4	2,100.1	2,053.2	2 %	Cows	630	623	618	1 %
Bulls	10.8	164.7	170.2	-3 %	Bulls	890	883	880	0 %
Total	625.1	10,072.5	10,304.7	-2 %					
Total (Jan. To Dec. 2012)			32,336.9						

Source : USDA

Beef Output (tonnes)				
Fed		2,971,272	3,031,349	-2 %
Non-Fed		660,998	644,843	3 %
Total		3,632,270	3,676,192	-1 %
Total (Jan. To Dec. 2012)			11,615,011	

National Summary of Beef Graded			
	Mar 2013	2012	2011
Prime	4.7 %	3.6 %	3.6 %
Choice	68.3 %	65.2 %	65.2 %
Select	26.7 %	30.8 %	30.7 %

	For the period	Jan. - Mar.	2013	2012	% chg
U.S. Beef and Veal Imports (carcass weight, ' 000 lbs)					
Canada			132	178	-25 %
Australia			136	145	-6 %
New Zealand			166	129	28 %
Other			156	130	20 %
Total			590	582	1 %

Cattle Slaughter for the Week Ending			
	2013	2012	% chg
Canada	53,489	55,999	-4 %
US	625,100	614,500	2 %
Total Canada & US	678,589	670,499	1 %

U.S. Beef and Veal Exports (carcass weight, ' 000 lbs)					
Mexico			74	110	-32 %
Canada			118	90	30 %
Japan			112	88	26 %
Other			254	270	-6 %
Total			557	558	0 %

Cattle Slaughter Year to Date			
Canada	831,991	907,252	-8 %
US	10,072,500	10,304,700	-2 %
Total Canada & US	10,904,491	11,211,952	-3 %

US Live Cattle Imports			
Mexico - Feeder (Jan 1-May 4, 2013)	401,993	641,900	-37 %
Canada (Jan. 1 - April 27, 2013)	405,364	278,899	45 %

Canada and United States Beef and Veal Tariff Rate Quota Summary

US Beef and Veal Tariff Rate Quota (TRQ) Summary							
YTD Week Ending May 6, 2013	2013			2012			2013 VS 2012
Quota level	Tonnes entered	% filled	Tonnes entered	% filled			
Australia	378,214	58,011	15 %	63,237	17%		-8 %
New Zealand	213,402	72,097	34 %	53,993	25%		34 %
Argentina	20,000	0	0 %	0	0%		
Uruguay	20,000	8,529	43 %	5,396	27%		58 %
Japan	200	26	13 %	0	0%		
Others	64,805	15,615	24 %	16,674	26%		-6 %
Total TRQ	696,621	154,277	22 %	139,300	20%		11 %
TRQ (Australia, N. Z.)	591,616	130,107	22 %	117,230	20%		11 %
Canada	no limit	57,012	n/a	72,946	n/a		-22 %
Mexico	no limit	31,038	n/a	24,734	n/a		25 %

Canadian Beef and Veal Import Permits by Country			
YTD Week Ending May 1, 2013	2013	2012	% chg
Global quota (tonnes)	76,409	76,409	0 %
Supp. Quota Authorized	-	-	
Total quota	76,409	76,409	0 %
Permits issued			
New Zealand (29600 mt)	5,410	10,217	-47 %
Australia (35000 mt)	5,507	4,301	28 %
Uruguay	6,755	4,306	57 %
Japan	1	-	
Total	17,673	18,824	-6 %

Canadian Beef and Veal Import Permits by Type of Meat					
2013		(tonnes)		Total Total (%)	
	Grinding Beef	Cuts			
Japan	0	1		1	0 %
Australia	2,544	2,963		5,507	31 %
New Zealand	2,035	3,375		5,410	31 %
Uruguay	6,392	363		6,755	38 %
Total	10,971	6,702		17,673	100 %
YTD May 1, 2013					
Percentage of Total Imports					
Grinding Beef		Cuts			
	2013	2012	2013	2012	
Australia	14.4 %	14.6 %	16.8 %	8.2 %	
New Zealand	11.5 %	22.6 %	19.1 %	31.7 %	
Argentina					
Uruguay	36.2 %	20.1 %	2.1 %	2.8 %	
Total	62.1 %	57.3 %	37.9 %	42.7 %	

Sources : Canadian Slaughter and Grading Data, CBGA, US Data: USDA, Canadian TRQ Data: DFAIT



Beef Supply at a Glance

Year To Date for the Week Ending May 4, 2013

Weekly Federally Inspected Slaughter

	Fed Slaughter				Non-fed Slaughter				Total Canada
	West	East	Canada	Weekly Avg.	West	East	Canada	Weekly Avg.	
2013-05-04	33,108	11,044	44,152		7,528	1,275	8,803		52,955
2013-04-27	35,189	11,070	46,259		5,817	1,413	7,230		53,489
2013-04-20	34,969	11,924	46,893		5,901	1,504	7,405		54,298
2013-04-13	31,978	10,607	42,585		6,614	1,751	8,365		50,950
2013-04-06	34,573	11,795	46,368		5,406	1,645	7,051		53,419
2013-03-30	26,439	8,369	34,808		3,478	1,619	5,097		39,905
2013-03-23	39,704	10,457	50,161		5,202	1,949	7,151		57,312
2013-03-16	33,411	10,132	43,543		6,013	1,980	7,993		51,536
2013-03-09	31,856	9,997	41,853		7,923	2,060	9,983		51,836
2013-03-02	30,695	10,005	40,700		8,198	2,207	10,405		51,105
2013-02-23	26,071	7,903	33,974		7,071	2,023	9,094		43,068
2013-02-16	30,036	8,665	38,701		8,454	2,079	10,533		49,234
2013-02-09	27,960	9,746	37,706		9,134	2,138	11,272		48,978
2013-02-02	31,542	7,619	39,161		8,423	2,556	10,979		50,140
January 2013	97,992	33,151	131,143	32,786	35,396	10,182	45,578	11,395	176,721
December 2012	112,442	45,782	158,224	31,645	40,972	11,932	52,904	10,581	211,128
November 2012	110,962	44,226	155,188	38,797	21,653	9,536	31,189	7,797	186,377
October 2012	88,401	44,977	133,378	33,345	14,947	7,324	22,271	5,568	155,649
September 2012	155,560	52,350	207,910	41,582	18,398	8,020	26,418	5,284	234,328
August 2012	145,455	40,151	185,606	46,402	16,472	5,977	22,449	5,612	208,055
July 2012	144,623	39,432	184,055	46,014	20,769	7,061	27,830	6,958	211,885
June 2012	189,338	49,697	239,035	47,807	23,060	10,253	33,313	6,663	272,348
May 2012	151,522	40,598	192,120	48,030	18,765	13,246	32,011	8,003	224,131
April 2012	136,434	38,963	175,397	43,849	21,529	14,214	35,743	8,936	211,140
March 2012	170,035	54,134	224,169	44,834	33,164	19,548	52,712	10,542	276,881
to date 2013	545,523	172,484	718,007	39,889	130,558	36,381	166,939	9,274	884,946
Total 2012	1,659,439	525,503	2,184,942	42,018	284,541	141,670	426,211	8,196	2,611,153

Source : Canadian Beef Grading Agency

Grading								
	Weekly Totals				May 4, 2013			
	West	%	East	%	Canada 2013	%	Canada 2012	%
A - Prime	1,252	3.8 %	228	2.1 %	1,480	3.3 %	744	1.4 %
AAA	21,869	65.9 %	6,135	55.5 %	28,004	63.3 %	31,898	61.1 %
AA	9,254	27.9 %	3,955	35.8 %	13,209	29.9 %	18,111	34.7 %
A	322	1.0 %	370	3.3 %	692	1.6 %	840	1.6 %
B1, 2, 3, 4	464	1.4 %	359	3.2 %	823	1.9 %	587	1.1 %
Year-to-date								
	West	%	East	%	Canada 2013	%	Canada 2012	%
A - Prime	10,572	1.9 %	3,808	2.2 %	14,380	2.0 %	9,640	1.2 %
AAA	337,983	61.9 %	98,040	55.9 %	436,023	60.5 %	450,857	57.5 %
AA	186,710	34.2 %	62,137	35.4 %	248,847	34.5 %	301,136	38.4 %
A	5,027	0.9 %	4,671	2.7 %	9,698	1.3 %	11,185	1.4 %
B1, 2, 3, 4	5,329	1.0 %	6,689	3.8 %	12,018	1.7 %	11,402	1.5 %

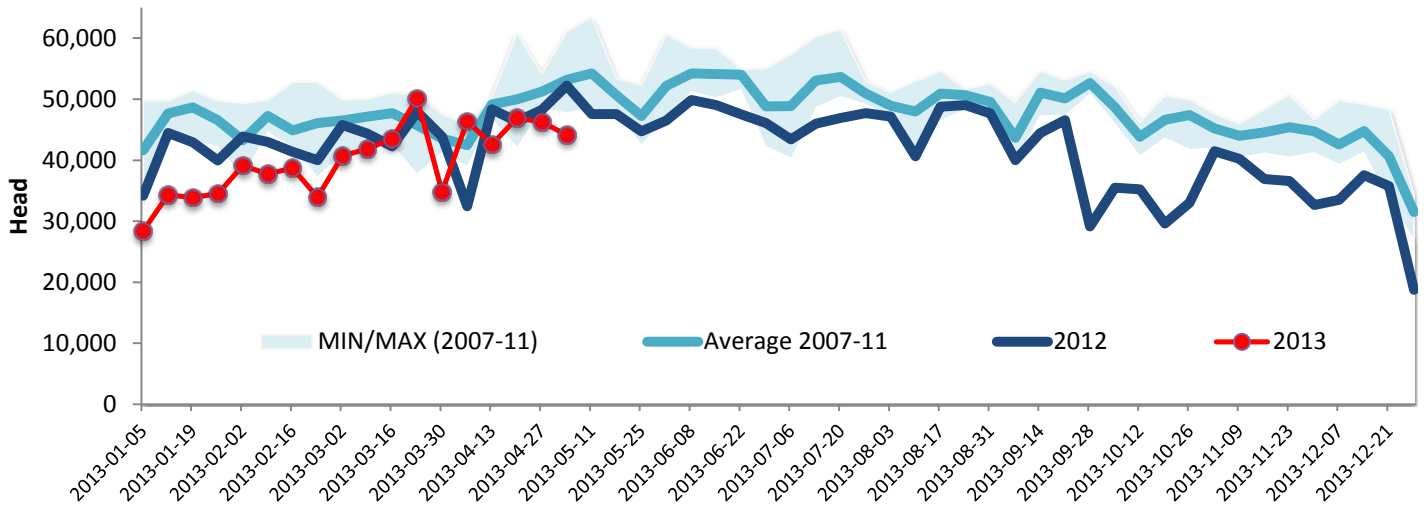
Source : Canadian Beef Grading Agency



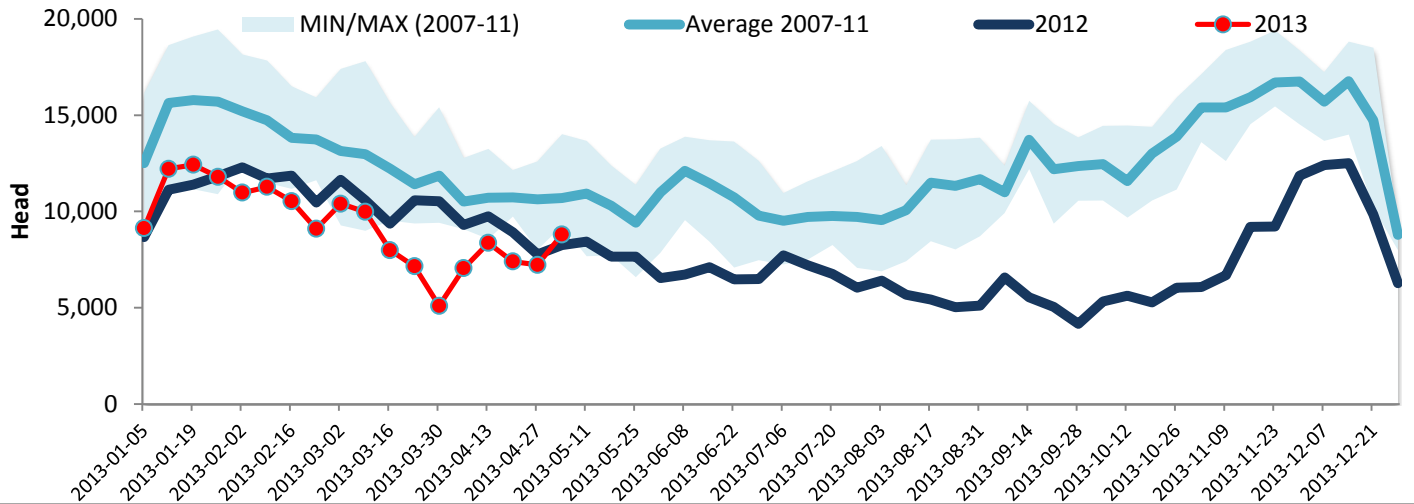
Year To Date for the Week Ending May 4, 2013

Federally Inspected Slaughter

Canadian Fed Slaughter



Canadian Non-Fed Slaughter



Total Cattle Slaughter in Canada

