



# Beef Supply at a Glance - CANADA

Year To Date for the Week Ending March 30, 2013

Federally Inspected Slaughter (head)	West			East			CANADA		
	2013	2012	% chg	2013	2012	% chg	2013	2012	% chg
Steers	224,026	225,032	0 %	82,557	86,430	-4 %	306,583	311,462	-2 %
Heifers	151,680	199,670	-24 %	33,487	42,897	-22 %	185,167	242,567	-24 %
Cows	98,927	84,536	17 %	28,624	53,188	-46 %	127,551	137,724	-7 %
Bulls	365	3,440	-89 %	169	919	-82 %	534	4,359	-88 %
<b>Total</b>	<b>474,998</b>	<b>512,678</b>	<b>-7 %</b>	<b>144,837</b>	<b>183,434</b>	<b>-21 %</b>	<b>619,835</b>	<b>696,112</b>	<b>-11 %</b>
<b>Carcass Weight (lbs)</b>									
Steers	883	882	0 %	908	888	2 %	890	884	1 %
Heifers	828	832	0 %	817	806	1 %	826	828	0 %
Cows	681	704	-3 %	653	629	4 %	675	675	0 %
Bulls	918	1,032	-11 %	920	934	-1 %	918	1,011	-9 %
<b>Beef Output (tonnes)</b>									
Fed	147,003	165,729	-11 %	46,509	50,602	-8 %	193,549	216,444	-11 %
Non-Fed	30,775	28,665	7 %	8,567	15,597	-45 %	39,358	44,259	-11 %
<b>Total</b>	<b>177,777</b>	<b>194,394</b>	<b>-9 %</b>	<b>55,076</b>	<b>66,199</b>	<b>-17 %</b>	<b>232,906</b>	<b>260,704</b>	<b>-11 %</b>

Source: Canadian Beef Grading Agency

<b>EXPORTS</b>				For the period Jan. 1 - March 23, 2013				<b>IMPORTS</b>				For the period Jan. 1 - Jan. 31, 2013			
				2013	2012	% chg					2013	2012	% chg		
<b>Live Cattle</b>							<b>(# of head)</b>								
slaughter steers & heifers				95,485	96,237	-1 %	Live Cattle				316	304	4 %		
feeder cattle & calves				74,119	43,072	72 %	From U.S.				917	3,615	-75 %		
cows & bulls				89,822	44,040	104 %					<b>Total</b>	<b>1,233</b>	<b>3,919</b>	<b>-69 %</b>	
others*				3,388	2,147	58 %					Source: Statistics Canada				
<b>Total</b>				<b>262,814</b>	<b>185,496</b>	<b>42 %</b>					For the period Jan. 1 - March 30, 2013				

\* = breeding and others

Source: USDA - APHIS

<b>Beef &amp; Veal Exports to US</b>			
(Tonnes) Jan. 1 - 31			
	2013	2012	% chg
Fresh/chilled cuts	9,621	18,042	-47 %
Frozen cuts	4,176	1,016	311 %
Offals	999	1,335	-25 %
Processed	5	5	0 %
<b>TOTAL</b>	<b>14,801</b>	<b>20,398</b>	<b>-27 %</b>
Exports (Jan. 1 - Dec. 31)		197,378	

Source: Statistics Canada

<b>Beef and Veal</b>			
(tonnes) preliminary			
	2013	2012	% chg
United States	43,931	36,526	20 %
New Zealand	3,847	8,837	-56 %
Australia	3,126	3,154	-1 %
Uruguay	5,126	3,431	49 %
Others	342	743	-54 %
<b>Total</b>	<b>56,372</b>	<b>52,691</b>	<b>7 %</b>
<b>Non-NAFTA Beef/Veal total</b>	<b>11,951</b>	<b>15,353</b>	<b>-22 %</b>
Fresh, chilled & frozen (H.S. 0201, 0202)			

Source: CFIA

<b>Beef &amp; Veal Exports</b>			
(Tonnes) Jan. 1 to Jan. 31			
	2013	2012	% chg
United States	14,801	20,398	-27 %
Mexico	401	2,323	-83 %
Hong Kong	1,249	1,629	-23 %
Russia	53	593	-91 %
Japan	968	1,017	-5 %
China	238	0	
Egypt	119	263	-55 %
South Korea	177	0	
Columbia	0	0	
Ghana	0	0	
Suriname	59	25	
Ivory Coast	26	51	-48 %
Cuba	12	75	-84 %
Philippines	0	24	-98 %
Taiwan	0	47	-100 %
Others	699	247	
<b>TOTAL</b>	<b>18,803</b>	<b>26,692</b>	<b>-30 %</b>

Source: Statistics Canada

<b>Beef &amp; Veal Exports</b>			
('000 \$ CDN) Jan. 1 to Jan. 31			
	2013	2012	% chg
United States	62,788	88,578	-29 %
Mexico	2,365	11,773	-80 %
Hong Kong	7,213	6,707	8 %
Japan	4,818	6,146	-22 %
Russia	140	1,821	-92 %
South Korea	960	0	
China	918	0	
Cuba	122	670	-82 %
Egypt	330	403	-18 %
Suriname	299	98	
Macedonia	0	0	
France	118	112	5 %
Taiwan	0	198	-100 %
Italy	0	150	-100 %
Switzerland	170	127	34 %
Others	2,650	1,068	
<b>TOTAL</b>	<b>82,890</b>	<b>117,852</b>	<b>-30 %</b>

Source: Statistics Canada

26,445

116,784

**Year To Date for the Week Ending March 23, 2013**

	Weekly	2013	2012	% chg		Weekly	2013	2012	% chg
<b>Slaughter ('000 head)</b>					<b>Carcass Weight (lbs)</b>				
Steers	289.6	3,447.0	3,482.2	-1 %	Steers	858	867	852	2 %
Heifers	178.0	2,093.8	2,200.4	-5 %	Heifers	799	804	794	1 %
Cows	126.2	1,478.1	1,485.5	0 %	Cows	627	622	617	1 %
Bulls	10.5	111.6	118.5	-6 %	Bulls	884	882	874	1 %
<b>Total</b>	<b>604.3</b>	<b>7,130.5</b>	<b>7,286.6</b>	<b>-2 %</b>					
<b>Total (Jan. To Dec. 2012)</b>			<b>32,336.9</b>						

Source : USDA

**Beef Output (tonnes)**

Fed	2,123,592	2,142,705	-1 %
Non-Fed	462,857	463,692	0 %
<b>Total</b>	<b>2,586,450</b>	<b>2,606,398</b>	<b>-1 %</b>
<b>Total (Jan. To Dec. 2012)</b>		<b>11,615,011</b>	

**National Summary of Beef Graded**

	Jan 2013	2012	2011
Prime	3.7 %	3.6 %	3.6 %
Choice	67.4 %	65.2 %	65.2 %
Select	28.6 %	30.8 %	30.7 %

**Cattle Slaughter for the Week Ending**

2013-03-23

	For the period Jan.	2013	2012	% chg		2013	2012	% chg
<b>U.S. Beef and Veal Imports (carcass weight, ' 000 lbs)</b>					Canada	57,312	58,531	-2 %
Canada		39	56	-30 %	US	604,300	602,900	0 %
Australia		56	56	-1 %	<b>Total Canada &amp; US</b>	<b>661,612</b>	<b>661,431</b>	<b>0 %</b>
New Zealand		49	35	40 %				
Other		55	43	29 %				
<b>Total</b>		<b>199</b>	<b>190</b>	<b>5 %</b>				

**U.S. Beef and Veal Exports (carcass weight, ' 000 lbs)**

Mexico	29	38	-25 %
Canada	44	32	38 %
Japan	30	28	7 %
Other	88	84	5 %
<b>Total</b>	<b>192</b>	<b>182</b>	<b>5 %</b>

**Cattle Slaughter Year to Date**

Canada	579,930	641,709	-10 %
US	7,130,500	7,286,600	-2 %
<b>Total Canada &amp; US</b>	<b>7,710,430</b>	<b>7,928,309</b>	<b>-3 %</b>

**US Live Cattle Imports**

Mexico - Feeder (Jan 1-March 30, 2013)	299,336	449,395	-33 %
Canada (Jan. 1) March 23, 2013)	262,814	185,496	42 %

**Canada and United States Beef and Veal Tariff Rate Quota Summary****US Beef and Veal Tariff Rate Quota (TRQ) Summary**

YTD Week Ending April 1, 2013	Quota level	2013			2012		
		Tonnes entered	% filled	Tonnes entered	% filled	2013 VS 2012	
Australia	378,214	36,753	10 %	38,227	10 %	-4 %	
New Zealand	213,402	44,387	21 %	33,960	16 %	31 %	
Argentina	20,000	0	0 %	0	0 %		
Uruguay	20,000	6,166	31 %	3,435	17 %	80 %	
Japan	200	17	9 %	0	0 %		
Others	64,805	11,681	18 %	12,220	19 %	-4 %	
<b>Total TRQ</b>	<b>696,621</b>	<b>99,004</b>	<b>14 %</b>	<b>87,842</b>	<b>13 %</b>	<b>13 %</b>	
<b>TRQ (Australia, N. Z.)</b>	<b>591,616</b>	<b>81,140</b>	<b>14 %</b>	<b>72,187</b>	<b>12 %</b>	<b>12 %</b>	
Canada	no limit	37,904	n/a	52,071	n/a	-27 %	
Mexico	no limit	22,106	n/a	17,006	n/a	30 %	

**Canadian Beef and Veal Import Permits by Country**

YTD Week Ending March 27, 2013	2013			2012	% chg
	2013	2012	% chg		
Global quota (tonnes)	76,409	76,409	0 %		
Supp. Quota Authorized	-	-			
<b>Total quota</b>	<b>76,409</b>	<b>76,409</b>	<b>0 %</b>		
Permits issued					
New Zealand (29600 mt)	4,009	8,548	-53 %		
Australia (35000 mt)	3,529	2,945	20 %		
Uruguay	5,082	3,370	51 %		
Japan	1	-			
<b>Total</b>	<b>12,621</b>	<b>14,863</b>	<b>-15 %</b>		

**Canadian Beef and Veal Import Permits by Type of Meat**

YTD March 27, 2013	2013		2012		Total Total (%)
	Grinding Beef	Cuts	Grinding Beef	Cuts	
Japan	0	1			<b>1</b> <b>0 %</b>
Australia	1,804	1,725			<b>3,529</b> <b>28 %</b>
New Zealand	1,478	2,531			<b>4,009</b> <b>32 %</b>
Uruguay	4,874	208			<b>5,082</b> <b>40 %</b>
<b>Total</b>	<b>8,156</b>	<b>4,465</b>			<b>12,621</b> <b>100 %</b>
Percentage of Total Imports					
	<b>Grinding Beef</b>		<b>Cuts</b>		
	2013	2012	2013	2012	
Australia	14.3 %	12.3 %	13.7 %	7.5 %	
New Zealand	11.7 %	23.4 %	20.1 %	34.1 %	
Argentina					
Uruguay	38.6 %	20.1 %	1.6 %	2.6 %	
<b>Total</b>	<b>64.6 %</b>	<b>55.8 %</b>	<b>35.4 %</b>	<b>44.2 %</b>	

Sources : Canadian Slaughter and Grading Data, CBGA, US Data: USDA, Canadian TRQ Data: DFAIT



# Beef Supply at a Glance

Year To Date for the Week Ending March 30, 2013

## Weekly Federally Inspected Slaughter

	Fed Slaughter				Non-fed Slaughter				Total Canada
	West	East	Canada	Weekly Avg.	West	East	Canada	Weekly Avg.	
2013-03-30	26,439	8,369	34,808		3,478	1,619	5,097		39,905
2013-03-23	39,704	10,457	50,161		5,202	1,949	7,151		57,312
2013-03-16	33,411	10,132	43,543		6,013	1,980	7,993		51,536
2013-03-09	31,856	9,997	41,853		7,923	2,060	9,983		51,836
2013-03-02	30,695	10,005	40,700		8,198	2,207	10,405		51,105
2013-02-23	26,071	7,903	33,974		7,071	2,023	9,094		43,068
2013-02-16	30,036	8,665	38,701		8,454	2,079	10,533		49,234
2013-02-09	27,960	9,746	37,706		9,134	2,138	11,272		48,978
2013-02-02	31,542	7,619	39,161		8,423	2,556	10,979		50,140
2013-01-26	26,655	7,896	34,551		9,168	2,633	11,801		46,352
2013-01-19	24,617	9,278	33,895		9,329	3,092	12,421		46,316
2013-01-12	25,522	8,789	34,311		9,279	2,935	12,214		46,525
December 2012	112,442	45,782	158,224	31,645	40,972	11,932	52,904	10,581	211,128
November 2012	110,962	44,226	155,188	38,797	21,653	9,536	31,189	7,797	186,377
October 2012	88,401	44,977	133,378	33,345	14,947	7,324	22,271	5,568	155,649
September 2012	155,560	52,350	207,910	41,582	18,398	8,020	26,418	5,284	234,328
August 2012	145,455	40,151	185,606	46,402	16,472	5,977	22,449	5,612	208,055
July 2012	144,623	39,432	184,055	46,014	20,769	7,061	27,830	6,958	211,885
June 2012	189,338	49,697	239,035	47,807	23,060	10,253	33,313	6,663	272,348
May 2012	151,522	40,598	192,120	48,030	18,765	13,246	32,011	8,003	224,131
April 2012	136,434	38,963	175,397	43,849	21,529	14,214	35,743	8,936	211,140
March 2012	170,035	54,134	224,169	44,834	33,164	19,548	52,712	10,542	276,881
to date 2013	375,706	116,044	491,750	37,827	99,292	28,793	128,085	9,853	619,835
Total 2012	1,659,439	525,503	2,184,942	42,018	284,541	141,670	426,211	8,196	2,611,153

Source : Canadian Beef Grading Agency

	Grading							
	Weekly Totals				March 30, 2013			
	West	%	East	%	Canada 2013	%	Canada 2012	%
A - Prime	561	2.1 %	156	1.8 %	717	2.1 %	686	1.6 %
AAA	17,437	65.9 %	4,961	58.3 %	22,398	64.1 %	28,527	65.1 %
AA	7,896	29.9 %	2,946	34.6 %	10,842	31.0 %	13,344	30.5 %
A	192	0.7 %	177	2.1 %	369	1.1 %	517	1.2 %
B1, 2, 3, 4	361	1.4 %	273	3.2 %	634	1.8 %	724	1.7 %
	Year-to-date							
	West	%	East	%	Canada 2013	%	Canada 2012	%
A - Prime	5,604	1.5 %	2,644	2.2 %	8,248	1.7 %	6,171	1.1 %
AAA	227,646	60.5 %	65,469	55.3 %	293,115	59.3 %	306,238	55.0 %
AA	136,520	36.3 %	42,252	35.7 %	178,772	36.1 %	227,895	41.0 %
A	3,161	0.8 %	3,236	2.7 %	6,397	1.3 %	7,974	1.4 %
B1, 2, 3, 4	3,200	0.9 %	4,838	4.1 %	8,038	1.6 %	8,168	1.5 %

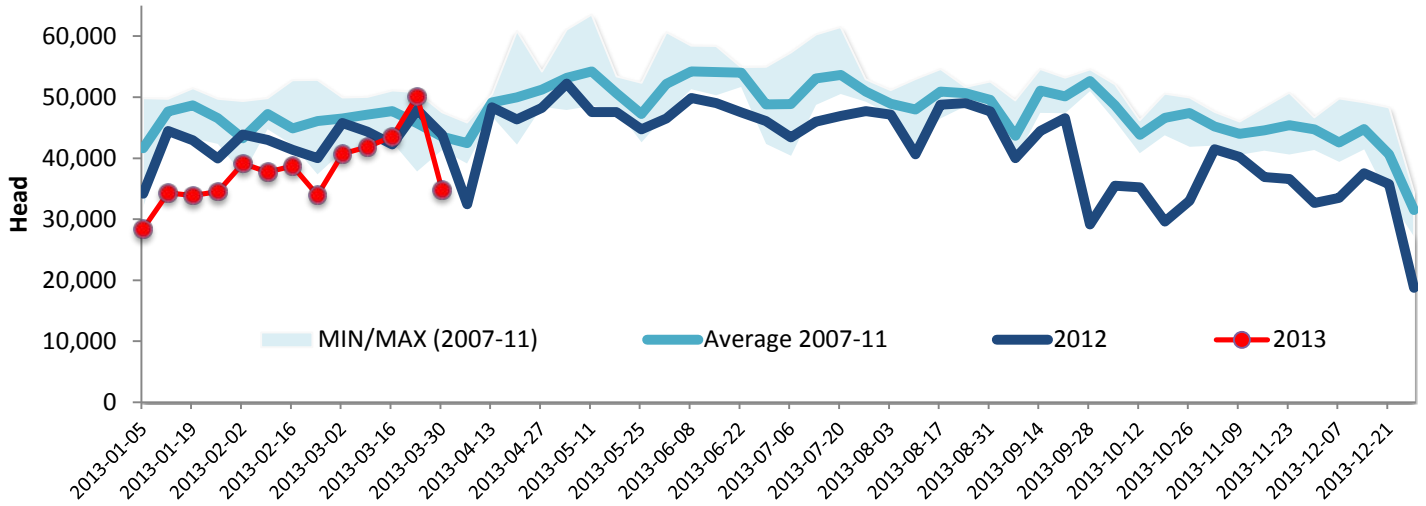
Source : Canadian Beef Grading Agency



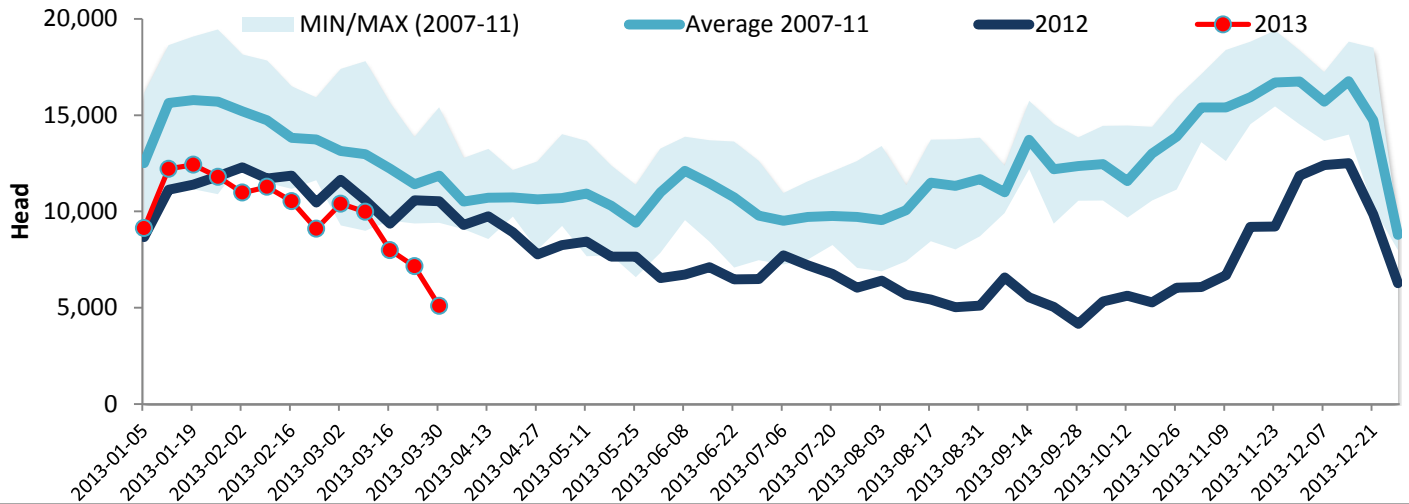
Year To Date for the Week Ending March 30, 2013

Federally Inspected Slaughter

### Canadian Fed Slaughter



### Canadian Non-Fed Slaughter



### Total Cattle Slaughter in Canada

