



Beef Supply at a Glance - CANADA

Year To Date for the Week Ending March 9, 2013

| Federally Inspected Slaughter (head) | West | | | East | | | CANADA | | |
|---|----------------|----------------|--------------|----------------|----------------|--------------|----------------|----------------|--------------|
| | 2013 | 2012 | % chg | 2013 | 2012 | % chg | 2013 | 2012 | % chg |
| Steers | 174,121 | 180,522 | -4 % | 62,201 | 65,573 | -5 % | 236,322 | 246,095 | -4 % |
| Heifers | 102,031 | 142,626 | -28 % | 24,885 | 31,259 | -20 % | 126,916 | 173,885 | -27 % |
| Cows | 84,413 | 66,836 | 26 % | 23,107 | 41,615 | -44 % | 107,520 | 108,451 | -1 % |
| Bulls | 186 | 2,443 | -92 % | 138 | 689 | -80 % | 324 | 3,132 | -90 % |
| Total | 360,751 | 392,427 | -8 % | 110,331 | 139,136 | -21 % | 471,082 | 531,563 | -11 % |
| Carcass Weight (lbs) | | | | | | | | | |
| Steers | 883 | 883 | 0 % | 904 | 886 | 2 % | 888 | 884 | 0 % |
| Heifers | 827 | 830 | 0 % | 815 | 803 | 1 % | 825 | 825 | 0 % |
| Cows | 682 | 703 | -3 % | 651 | 628 | 4 % | 675 | 675 | 0 % |
| Bulls | 917 | 1,026 | -11 % | 922 | 943 | -2 % | 919 | 1,008 | -9 % |
| Beef Output (tonnes) | | | | | | | | | |
| Fed | 108,240 | 126,264 | -14 % | 34,778 | 37,818 | -8 % | 142,982 | 164,092 | -13 % |
| Non-Fed | 26,246 | 22,496 | 17 % | 6,895 | 12,175 | -43 % | 33,124 | 34,710 | -5 % |
| Total | 134,486 | 148,760 | -10 % | 41,673 | 49,992 | -17 % | 176,106 | 198,802 | -11 % |

Source: Canadian Beef Grading Agency

| EXPORTS | | | | For the period Jan. 1 - March 2, 2013 | | | | IMPORTS | | | | For the period Jan. 1 - Jan. 31, 2013 | | | | |
|----------------------------|----------------|----------------|-------------|---------------------------------------|------|------|-------|----------------|------|-------|-------|---------------------------------------|--------------|--------------|--------------|--|
| Live Cattle | 2013 | 2012 | % chg | (# of head) | 2013 | 2012 | % chg | Live Cattle | 2013 | 2012 | % chg | From U.S. | 2013 | 2012 | % chg | |
| slaughter steers & heifers | 61,456 | 61,915 | -1 % | pure bred | 316 | 304 | 4 % | non pure bred | 917 | 3,615 | -75 % | Total | 1,233 | 3,919 | -69 % | |
| feeder cattle & calves | 49,286 | 25,722 | 92 % | Source: Statistics Canada | | | | | | | | | | | | |
| cows & bulls | 67,961 | 33,739 | 101 % | For the period Jan. 1 - March 9, 2013 | | | | | | | | | | | | |
| others* | 2,789 | 1,467 | 90 % | Beef and Veal | 2013 | 2012 | % chg | | | | | | | | | |
| Total | 181,492 | 122,843 | 48 % | (tonnes) preliminary | | | | | | | | | | | | |

* = breeding and others

Source: USDA - APHIS

| Beef & Veal Exports to US | | | | For the period Jan. 1 - March 9, 2013 | | | |
|--------------------------------------|---------------|---------------|--------------|---------------------------------------|---------------|---------------|--------------|
| (Tonnes) Jan. 1 - 31 | 2013 | 2012 | % chg | United States | 2013 | 2012 | % chg |
| Fresh/chilled cuts | 9,621 | 18,042 | -47 % | New Zealand | 2,914 | 6,984 | -58 % |
| Frozen cuts | 4,176 | 1,016 | 311 % | Australia | 2,514 | 2,636 | -5 % |
| Offals | 999 | 1,335 | -25 % | Uruguay | 3,906 | 2,797 | 40 % |
| Processed | 5 | 5 | 0 % | Others | 292 | 338 | -14 % |
| TOTAL | 14,801 | 20,398 | -27 % | Total | 44,002 | 39,808 | 11 % |
| Exports (Jan. 1 - Dec. 31) | | 197,378 | | Non-NAFTA Beef/Veal total | 9,201 | 12,349 | -25 % |

Source: Statistics Canada

Fresh, chilled & frozen (H.S. 0201, 0202)

Source: CFIA

| Beef & Veal Exports | | | | Jan. 1 to Jan. 31 | | | |
|--------------------------------|---------------|---------------|--------------|---------------------------|---------------|----------------|--------------|
| (Tonnes) | 2013 | 2012 | % chg | United States | 2013 | 2012 | % chg |
| United States | 14,801 | 20,398 | -27 % | Mexico | 2,365 | 11,773 | -80 % |
| Mexico | 401 | 2,323 | -83 % | Hong Kong | 7,213 | 6,707 | 8 % |
| Hong Kong | 1,249 | 1,629 | -23 % | Japan | 4,818 | 6,146 | -22 % |
| Russia | 53 | 593 | -91 % | Russia | 140 | 1,821 | -92 % |
| Japan | 968 | 1,017 | -5 % | South Korea | 960 | 0 | |
| China | 238 | 0 | | China | 918 | 0 | |
| Egypt | 119 | 263 | -55 % | Cuba | 122 | 670 | -82 % |
| South Korea | 177 | 0 | | Egypt | 330 | 403 | -18 % |
| Columbia | 0 | 0 | | Suriname | 299 | 98 | |
| Ghana | 0 | 0 | | Macedonia | 0 | 0 | |
| Suriname | 59 | 25 | | France | 118 | 112 | 5 % |
| Ivory Coast | 26 | 51 | -48 % | Taiwan | 0 | 198 | -100 % |
| Cuba | 12 | 75 | -84 % | Italy | 0 | 150 | -100 % |
| Philippines | 0 | 24 | -98 % | Switzerland | 170 | 127 | 34 % |
| Taiwan | 0 | 47 | -100 % | Others | 2,650 | 1,068 | |
| Others | 699 | 247 | | TOTAL | 82,890 | 117,852 | -30 % |
| TOTAL | 18,803 | 26,692 | -30 % | Source: Statistics Canada | | | |

Source: Statistics Canada

| Beef & Veal Exports | | | | Jan. 1 to Jan. 31 | | | |
|--------------------------------|--------|--------|-------|---------------------------|---------------|----------------|--------------|
| ('000 \$ CDN) | 2013 | 2012 | % chg | United States | 2013 | 2012 | % chg |
| United States | 62,788 | 88,578 | -29 % | Mexico | 2,365 | 11,773 | -80 % |
| Mexico | 2,365 | 11,773 | -80 % | Hong Kong | 7,213 | 6,707 | 8 % |
| Hong Kong | 7,213 | 6,707 | 8 % | Japan | 4,818 | 6,146 | -22 % |
| Japan | 4,818 | 6,146 | -22 % | Russia | 140 | 1,821 | -92 % |
| Russia | 140 | 1,821 | -92 % | South Korea | 960 | 0 | |
| South Korea | 960 | 0 | | China | 918 | 0 | |
| China | 918 | 0 | | Cuba | 122 | 670 | -82 % |
| South Korea | 960 | 0 | | Egypt | 330 | 403 | -18 % |
| China | 918 | 0 | | Suriname | 299 | 98 | |
| South Korea | 960 | 0 | | Macedonia | 0 | 0 | |
| China | 918 | 0 | | France | 118 | 112 | 5 % |
| South Korea | 960 | 0 | | Taiwan | 0 | 198 | -100 % |
| China | 918 | 0 | | Italy | 0 | 150 | -100 % |
| South Korea | 960 | 0 | | Switzerland | 170 | 127 | 34 % |
| China | 918 | 0 | | Others | 2,650 | 1,068 | |
| South Korea | 960 | 0 | | TOTAL | 82,890 | 117,852 | -30 % |
| China | 918 | 0 | | Source: Statistics Canada | | | |

Source: Statistics Canada

26,445

116,784



Year To Date for the Week Ending March 2, 2013

| | Weekly | 2013 | 2012 | % chg | | Weekly | 2013 | 2012 | % chg |
|----------------------------------|--------------|----------------|-----------------|-------------|-----------------------------|--------|------|------|-------|
| Slaughter ('000 head) | | | | | Carcass Weight (lbs) | | | | |
| Steers | 270.7 | 2,583.9 | 2,588.2 | 0 % | Steers | 858 | 870 | 855 | 2 % |
| Heifers | 168.6 | 1,550.6 | 1,628.8 | -5 % | Heifers | 800 | 806 | 793 | 2 % |
| Cows | 116.9 | 1,104.2 | 1,129.5 | -2 % | Cows | 624 | 621 | 612 | 1 % |
| Bulls | 8.3 | 81.3 | 87.1 | -7 % | Bulls | 884 | 882 | 869 | 2 % |
| Total | 564.5 | 5,320.0 | 5,433.6 | -2 % | | | | | |
| Total (Jan. To Dec. 2012) | | | 32,336.9 | | | | | | |

Source : USDA

| Beef Output (tonnes) | | | | |
|----------------------------------|--|------------------|-------------------|------------|
| Fed | | 1,589,405 | 1,592,977 | 0 % |
| Non-Fed | | 344,244 | 348,611 | -1 % |
| Total | | 1,933,649 | 1,941,588 | 0 % |
| Total (Jan. To Dec. 2012) | | | 11,615,011 | |

| National Summary of Beef Graded | | | |
|--|----------|--------|--------|
| | Jan 2013 | 2012 | 2011 |
| Prime | 3.7 % | 3.6 % | 3.6 % |
| Choice | 67.4 % | 65.2 % | 65.2 % |
| Select | 28.6 % | 30.8 % | 30.7 % |

| | For the period Jan. | 2013 | 2012 | % chg |
|---|---------------------|------------|------------|------------|
| U.S. Beef and Veal Imports (carcass weight, ' 000 lbs) | | | | |
| Canada | | 39 | 56 | -30 % |
| Australia | | 56 | 56 | -1 % |
| New Zealand | | 49 | 35 | 40 % |
| Other | | 55 | 43 | 29 % |
| Total | | 199 | 190 | 5 % |

| Cattle Slaughter for the Week Ending | | | |
|---|----------------|----------------|-------------|
| | 2013 | 2012 | % chg |
| Canada | 51,105 | 57,294 | -11 % |
| US | 564,500 | 620,100 | -9 % |
| Total Canada & US | 615,605 | 677,394 | -9 % |

| U.S. Beef and Veal Exports (carcass weight, ' 000 lbs) | | | | |
|---|--|------------|------------|------------|
| Mexico | | 29 | 38 | -25 % |
| Canada | | 44 | 32 | 38 % |
| Japan | | 30 | 28 | 7 % |
| Other | | 88 | 84 | 5 % |
| Total | | 192 | 182 | 5 % |

| Cattle Slaughter Year to Date | | | |
|--------------------------------------|------------------|------------------|-------------|
| Canada | 419,246 | 476,525 | -12 % |
| US | 5,320,000 | 5,433,600 | -2 % |
| Total Canada & US | 5,739,246 | 5,910,125 | -3 % |

| US Live Cattle Imports | | | |
|---------------------------------------|---------|---------|-------|
| Mexico - Feeder (Jan 1-March 9, 2013) | 223,474 | 338,268 | -34 % |
| Canada (Jan. 1) March 2, 2013) | 181,492 | 122,843 | 48 % |

Canada and United States Beef and Veal Tariff Rate Quota Summary

| US Beef and Veal Tariff Rate Quota (TRQ) Summary | | | | | | | |
|---|----------------|---------------|----------------|---------------|------------|-------------|--------------|
| YTD Week Ending March 11, 2013 | 2013 | | | 2012 | | | 2013 VS 2012 |
| Quota level | Tonnes entered | % filled | Tonnes entered | % filled | | | |
| Australia | 378,214 | 28,206 | 7 % | 26,824 | 7 % | 5 % | |
| New Zealand | 213,402 | 29,574 | 14 % | 18,500 | 9 % | 60 % | |
| Argentina | 20,000 | 0 | 0 % | 0 | 0 % | | |
| Uruguay | 20,000 | 4,690 | 23 % | 2,585 | 13 % | 81 % | |
| Japan | 200 | 12 | 6 % | 0 | 0 % | | |
| Others | 64,805 | 8,553 | 13 % | 8,741 | 13 % | -2 % | |
| Total TRQ | 696,621 | 71,035 | 10 % | 56,650 | 8 % | 25 % | |
| TRQ (Australia, New Zealand) | 591,616 | 57,780 | 10 % | 45,324 | 8 % | 27 % | |
| Canada | no limit | 25,974 | n/a | 36,306 | n/a | -28 % | |
| Mexico | no limit | 15,704 | n/a | 12,607 | n/a | 25 % | |

| Canadian Beef and Veal Import Permits by Country | | | |
|---|---------------|---------------|--------------|
| YTD Week Ending March 11, 2013 | 2013 | 2012 | % chg |
| Global quota (tonnes) | 76,409 | 76,409 | 0 % |
| Supp. Quota Authorized | - | - | |
| Total quota | 76,409 | 76,409 | 0 % |
| Permits issued | | | |
| New Zealand (29600 mt) | 3,326 | 7,263 | -54 % |
| Australia (35000 mt) | 2,987 | 2,637 | 13 % |
| Uruguay | 4,216 | 2,935 | 44 % |
| Japan | - | - | |
| Total | 10,529 | 12,835 | -18 % |
| Over quota tariff rate : 26.5 % | | | |

| Canadian Beef and Veal Import Permits by Type of Meat | | | | | |
|--|---------------|---------------|---------------|---------------|-----------------|
| YTD March 11, 201 | 2013 | | (tonnes) | | Total Total (%) |
| | Grinding Beef | Cuts | Grinding Beef | Cuts | |
| Japan | 0 | 0 | 0 | 0 | 0 % |
| Australia | 1,649 | 1,338 | 2,987 | 28 % | 28 % |
| New Zealand | 1,270 | 2,056 | 3,326 | 32 % | 32 % |
| Uruguay | 4,052 | 164 | 4,216 | 40 % | 40 % |
| Total | 6,971 | 3,558 | 10,529 | 100 % | 100 % |
| Percentage of Total Imports | | | | | |
| | Grinding Beef | | Cuts | | |
| | 2013 | 2012 | 2013 | 2012 | |
| Australia | 15.7 % | 13.8 % | 12.7 % | 6.9 % | |
| New Zealand | 12.1 % | 22.3 % | 19.5 % | 34.3 % | |
| Argentina | | | | | |
| Uruguay | 38.5 % | 20.3 % | 1.6 % | 2.6 % | |
| Total | 66.2 % | 56.4 % | 33.8 % | 43.5 % | |

Sources : Canadian Slaughter and Grading Data, CBGA, US Data: USDA, Canadian TRQ Data: DFAIT



Beef Supply at a Glance

Year To Date for the Week Ending March 9, 2013

Weekly Federally Inspected Slaughter

| | Fed Slaughter | | | | Non-fed Slaughter | | | | Total Canada |
|----------------|---------------|---------|-----------|-------------|-------------------|---------|---------|-------------|-----------------|
| | West | East | Canada | Weekly Avg. | West | East | Canada | Weekly Avg. | |
| 2013-03-09 | 31,856 | 9,997 | 41,853 | | 7,923 | 2,060 | 9,983 | | 51,836 |
| 2013-03-02 | 30,695 | 10,005 | 40,700 | | 8,198 | 2,207 | 10,405 | | 51,105 |
| 2013-02-23 | 26,071 | 7,903 | 33,974 | | 7,071 | 2,023 | 9,094 | | 43,068 |
| 2013-02-16 | 30,036 | 8,665 | 38,701 | | 8,454 | 2,079 | 10,533 | | 49,234 |
| 2013-02-09 | 27,960 | 9,746 | 37,706 | | 9,134 | 2,138 | 11,272 | | 48,978 |
| 2013-02-02 | 31,542 | 7,619 | 39,161 | | 8,423 | 2,556 | 10,979 | | 50,140 |
| 2013-01-26 | 26,655 | 7,896 | 34,551 | | 9,168 | 2,633 | 11,801 | | 46,352 |
| 2013-01-19 | 24,617 | 9,278 | 33,895 | | 9,329 | 3,092 | 12,421 | | 46,316 |
| 2013-01-12 | 25,522 | 8,789 | 34,311 | | 9,279 | 2,935 | 12,214 | | 46,525 |
| 2013-01-05 | 21,198 | 7,188 | 28,386 | | 7,620 | 1,522 | 9,142 | | 37,528 |
| December 2012 | 112,442 | 45,782 | 158,224 | 31,645 | 40,972 | 11,932 | 52,904 | 10,581 | 211,128 |
| November 2012 | 110,962 | 44,226 | 155,188 | 38,797 | 21,653 | 9,536 | 31,189 | 7,797 | 186,377 |
| October 2012 | 88,401 | 44,977 | 133,378 | 33,345 | 14,947 | 7,324 | 22,271 | 5,568 | 155,649 |
| September 2012 | 155,560 | 52,350 | 207,910 | 41,582 | 18,398 | 8,020 | 26,418 | 5,284 | 234,328 |
| August 2012 | 145,455 | 40,151 | 185,606 | 46,402 | 16,472 | 5,977 | 22,449 | 5,612 | 208,055 |
| July 2012 | 144,623 | 39,432 | 184,055 | 46,014 | 20,769 | 7,061 | 27,830 | 6,958 | 211,885 |
| June 2012 | 189,338 | 49,697 | 239,035 | 47,807 | 23,060 | 10,253 | 33,313 | 6,663 | 272,348 |
| May 2012 | 151,522 | 40,598 | 192,120 | 48,030 | 18,765 | 13,246 | 32,011 | 8,003 | 224,131 |
| April 2012 | 136,434 | 38,963 | 175,397 | 43,849 | 21,529 | 14,214 | 35,743 | 8,936 | 211,140 |
| March 2012 | 170,035 | 54,134 | 224,169 | 44,834 | 33,164 | 19,548 | 52,712 | 10,542 | 276,881 |
| February 2012 | 131,791 | 36,498 | 168,289 | 42,072 | 28,607 | 17,727 | 46,334 | 11,584 | 214,623 |
| January 2012 | 122,876 | 38,695 | 161,571 | 40,393 | 26,205 | 16,832 | 43,037 | 10,759 | 204,608 |
| to date 2013 | 276,152 | 87,086 | 363,238 | 36,324 | 84,599 | 23,245 | 107,844 | 10,784 | 471,082 |
| Total 2012 | 1,659,439 | 525,503 | 2,184,942 | 42,018 | 284,541 | 141,670 | 426,211 | 8,196 | 2,611,153 |

Source : Canadian Beef Grading Agency

| Grading | | | | | | | | |
|--------------|---------------|--------|--------|--------|---------------|--------|-------------|--------|
| | Weekly Totals | | | | March 9, 2013 | | | |
| | West | % | East | % | Canada 2013 | % | Canada 2012 | % |
| A - Prime | 546 | 1.7 % | 179 | 1.8 % | 725 | 1.7 % | 567 | 1.3 % |
| AAA | 20,443 | 64.1 % | 5,827 | 57.5 % | 26,270 | 62.5 % | 26,440 | 59.5 % |
| AA | 10,387 | 32.6 % | 3,489 | 34.5 % | 13,876 | 33.0 % | 16,306 | 36.7 % |
| A | 274 | 0.9 % | 287 | 2.8 % | 561 | 1.3 % | 511 | 1.1 % |
| B1, 2, 3, 4 | 258 | 0.8 % | 345 | 3.4 % | 603 | 1.4 % | 619 | 1.4 % |
| Year-to-date | | | | | | | | |
| | West | % | East | % | Canada 2013 | % | Canada 2012 | % |
| A - Prime | 3,488 | 1.3 % | 2,082 | 2.3 % | 5,570 | 1.5 % | 3,885 | 0.9 % |
| AAA | 162,715 | 58.8 % | 48,638 | 54.6 % | 211,353 | 57.8 % | 220,543 | 52.2 % |
| AA | 105,911 | 38.3 % | 31,918 | 35.8 % | 137,829 | 37.7 % | 185,434 | 43.9 % |
| A | 2,368 | 0.9 % | 2,586 | 2.9 % | 4,954 | 1.4 % | 6,383 | 1.5 % |
| B1, 2, 3, 4 | 2,173 | 0.8 % | 3,820 | 4.3 % | 5,993 | 1.6 % | 6,067 | 1.4 % |

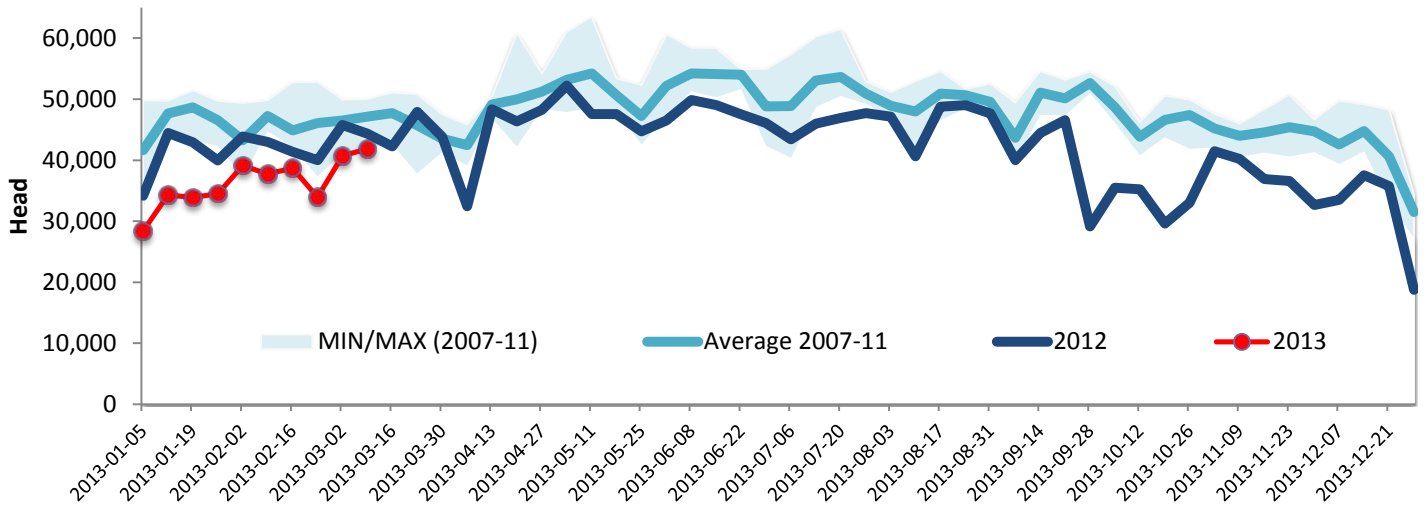
Source : Canadian Beef Grading Agency



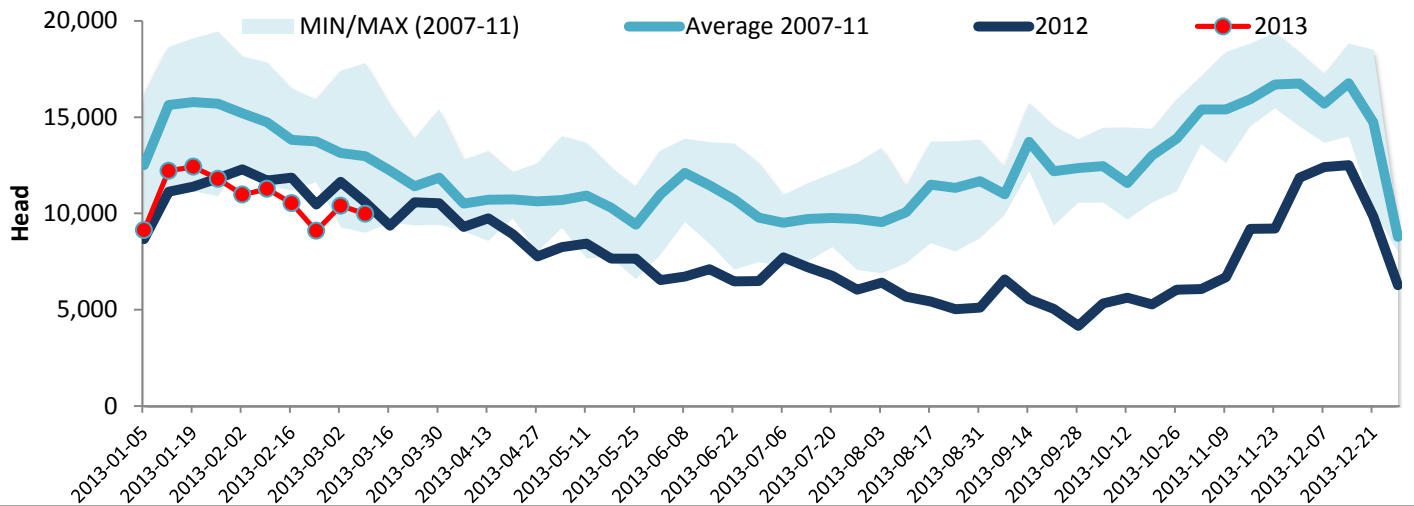
Year To Date for the Week Ending March 9, 2013

Federally Inspected Slaughter

Canadian Fed Slaughter



Canadian Non-Fed Slaughter



Total Cattle Slaughter in Canada

