



# Beef Supply at a Glance - CANADA

Year To Date for the Week Ending July 12, 2014

Federally Inspected Slaughter (head)	West			East			CANADA		
	2014	2013	% chg	2014	2013	% chg	2014	2013	% chg
Steers	540,289	500,648	8 %	198,690	196,070	1 %	738,979	696,718	6 %
Heifers	398,219	348,646	14 %	81,885	84,913	-4 %	480,104	433,559	11 %
Cows	172,034	182,588	-6 %	51,175	51,569	-1 %	223,209	234,157	-5 %
Bulls	1,839	1,751	5 %	241	254	-5 %	2,080	2,005	4 %
<b>Total</b>	<b>1,112,381</b>	<b>1,033,633</b>	<b>8 %</b>	<b>331,991</b>	<b>332,806</b>	<b>0 %</b>	<b>1,444,372</b>	<b>1,366,439</b>	<b>6 %</b>

Carcass Weight (lbs)									
Steers	828	864	-4 %	885	894	-1 %	843	872	-3 %
Heifers	786	821	-4 %	797	808	-1 %	788	819	-4 %
Cows	686	681	1 %	657	653	1 %	679	675	1 %
Bulls	917	916	0 %	905	903	0 %	916	914	0 %

Beef Output (tonnes)									
Fed	345,618	326,767	6 %	109,592	110,855	-1 %	455,128	437,621	4 %
Non-Fed	54,410	57,228	-5 %	15,382	15,421	0 %	69,756	72,670	-4 %
<b>Total</b>	<b>400,028</b>	<b>383,994</b>	<b>4 %</b>	<b>124,974</b>	<b>126,276</b>	<b>-1 %</b>	<b>524,884</b>	<b>510,291</b>	<b>3 %</b>

Source: Canadian Beef Grading Agency

EXPORTS			
For the period Jan. 1 - July 5, 2014			
Live Cattle	2014	2013	% chg
slaughter steers & heifers	212,565	220,413	-4 %
feeder cattle & calves	228,389	162,865	40 %
cows & bulls	177,316	197,711	-10 %
others*	16,350	6,562	
<b>Total</b>	<b>634,620</b>	<b>587,551</b>	<b>8 %</b>

\*= breeding and others  
Source: USDA - APHIS

Beef & Veal Exports to US			
For the period Jan. 1 - May 31, 2014			
(Tonnes)	2014	2013	% chg
Fresh/chilled cuts	78,243	70,279	11 %
Frozen cuts	5,046	6,721	-25 %
Offals	7,009	5,521	27 %
Processed	674	461	46 %
<b>TOTAL</b>	<b>90,972</b>	<b>82,982</b>	<b>10 %</b>
Exports (Jan. 1 - Dec. 31)		278,966	-100 %

Source: Statistics Canada

Beef & Veal Exports			
For the period Jan. 1 - May 31, 2014			
(Tonnes)	2014	2013	% chg
United States	90,972	82,982	10 %
Hong Kong	9,731	11,068	-12 %
Mexico	9,483	6,152	54 %
Japan	5,323	5,865	-9 %
China	3,465	2,010	72 %
Peru	1,115	226	
Egypt	1,060	714	48 %
Taiwan	621	232	
Angola	580	263	
Saudi Arabia	424	814	-48 %
South Korea	418	654	-36 %
Suriname	345	317	9 %
Ivory Coast	277	280	-1 %
Cuba	221	177	25 %
Senegal	210	210	0 %
Others	1,868	3,636	-49 %
<b>TOTAL</b>	<b>126,114</b>	<b>115,600</b>	<b>9 %</b>

Source: Statistics Canada

IMPORTS			
For the period Jan. 1 - May 31, 2014			
(# of head)	2014	2013	% chg
Live Cattle pure bred	1,133	1,357	-17 %
From U.S. non pure bred	18,282	18,622	-2 %
<b>Total</b>	<b>19,415</b>	<b>19,979</b>	<b>-3 %</b>

Source: Statistics Canada

Beef and Veal			
For the period Jan. 1 - July 12, 2014			
(tonnes)	2014	2013	% chg
United States	74,445	95,424	-22 %
Australia	14,900	7,812	91 %
Uruguay	10,753	9,646	11 %
New Zealand	8,430	9,096	-7 %
Others	1,784	1,330	34 %
<b>Total</b>	<b>110,312</b>	<b>123,308</b>	<b>-11 %</b>
<b>Non-NAFTA Beef/Veal total</b>	<b>34,057</b>	<b>26,249</b>	<b>30 %</b>
Fresh, chilled & frozen (H.S. 0201, 0202)			

Source: CFIA

Beef & Veal Exports			
For the period Jan. 1 - May 31, 2014			
('000 \$ CDN)	2014	2013	% chg
United States	516,640	371,152	39 %
Hong Kong	69,143	69,285	0 %
Mexico	56,974	32,130	77 %
Japan	26,752	29,303	-9 %
China	17,850	7,761	
Peru	1,936	274	
Egypt	1,473	972	51 %
Taiwan	3,884	928	
Angola	534	303	76 %
Saudi Arabia	3,335	7,124	-53 %
South Korea	4,102	2,697	52 %
Suriname	1,459	1,574	-7 %
Ivory Coast	222	278	-20 %
Cuba	775	1,330	-42 %
Senegal	167	132	27 %
Others	8,935	17,055	-48 %
<b>TOTAL</b>	<b>714,179</b>	<b>542,296</b>	<b>32 %</b>

Source: Statistics Canada



# UNITED STATES

Year To Date for the Week Ending July 5, 2014

	Weekly	2014	2013	% chg		Weekly	2014	2013	% chg
<b>Slaughter ('000 head)</b>					<b>Carcass Weight (lbs)</b>				
Steers	259.8	8,060.6	8,231.2	-2 %	Steers	861	856	857	0 %
Heifers	144.3	4,380.1	4,698.4	-7 %	Heifers	781	790	791	0 %
Cows	79.8	2,860.4	3,285.0	-13 %	Cows	626	628	622	1 %
Bulls	8.9	276.1	274.0	1 %	Bulls	907	895	886	1 %
<b>Total</b>	<b>492.8</b>	<b>15,577.2</b>	<b>16,488.6</b>	<b>-6 %</b>					
<b>Total (Jan. To Dec. 2013)</b>			<b>31,796.9</b>						

Source : USDA

<b>Beef Output (tonnes)</b>				<b>National Summary of Beef Graded</b>			
Fed		4,709,152	4,895,708	-4 %	<b>May 2014</b>	<b>2013</b>	<b>2012</b>
Non-Fed		928,839	1,039,119	-11 %	Prime	3.6 %	3.6 %
<b>Total</b>		<b>5,637,991</b>	<b>5,934,827</b>	<b>-5 %</b>	Choice	67.4 %	65.2 %
<b>Total (Jan. To Dec. 2013)</b>			<b>11,504,554</b>		Select	28.8 %	30.9 %

<b>Cattle Slaughter for the Week Ending</b>					<b>2014-07-05</b>				
	<b>For the period</b>	<b>Jan. - May</b>	<b>2014</b>	<b>2013</b>	<b>% chg</b>	<b>2014</b>	<b>2013</b>	<b>% chg</b>	
<b>U.S. Beef and Veal Imports (carcass weight, '000,000 lbs)</b>									
Canada			249	227	10 %	Canada	42,447	40,572	5 %
Australia			324	245	33 %	US	492,760	556,820	-12 %
New Zealand			295	302	-2 %	<b>Total Canada &amp; US</b>	<b>535,207</b>	<b>597,392</b>	<b>-10 %</b>
Other			243	252	-4 %				
<b>Total</b>			<b>1,112</b>	<b>1,026</b>	<b>8 %</b>	<b>Cattle Slaughter Year to Date</b>			
						Canada	1,392,590	1,312,888	6 %
<b>U.S. Beef and Veal Exports (carcass weight, '000,000 lbs)</b>						US	15,577,196	16,488,606	-6 %
Mexico			184	130	41 %	<b>Total Canada &amp; US</b>	<b>16,969,786</b>	<b>17,801,494</b>	<b>-5 %</b>
Canada			146	184	-21 %				
Japan			241	251	-4 %	<b>US Live Cattle Imports</b>			
Other			444	389	14 %	Mexico - Feeder (Jan 1-July 12, 2014)	556,181	519,255	7 %
<b>Total</b>			<b>1,015</b>	<b>954</b>	<b>6 %</b>	Canada (Jan. 1 - July 5, 2014)	634,620	587,551	8 %

## Canada and United States Beef and Veal Tariff Rate Quota Summary

### US Beef and Veal Tariff Rate Quota (TRQ) Summary

YTD Week Ending July 14, 2014	2014			2013		
	Quota level	Tonnes entered	% filled	Tonnes entered	% filled	2014 VS 2013
Australia	378,214	131,357	35 %	99,142	26 %	32 %
New Zealand	213,402	116,979	55 %	115,855	54 %	1 %
Argentina	20,000	0	0 %	0	0 %	
Uruguay	20,000	9,507	48 %	12,726	64 %	-25 %
Japan	200	68	34 %	42	21 %	61 %
Others	64,805	23,536	36 %	22,248	34 %	6 %
<b>Total TRQ</b>	<b>696,621</b>	<b>281,446</b>	<b>40 %</b>	<b>250,012</b>	<b>36 %</b>	<b>13 %</b>
<b>TRQ (Australia, N. Z.)</b>	<b>591,616</b>	<b>248,335</b>	<b>42 %</b>	<b>214,997</b>	<b>36 %</b>	<b>16 %</b>
Canada	no limit	99,235	n/a	90,836	n/a	
Mexico	no limit	51,471	n/a	48,257	n/a	

### Canadian Beef and Veal Import Permits by Country

YTD Week Ending July 14, 2014	2014	2013	% chg
Global quota (tonnes)	76,409	76,409	0 %
Supp. Quota Authorized	-	-	
<b>Total quota</b>	<b>76,409</b>	<b>76,409</b>	<b>0 %</b>
Permits issued			
New Zealand (29600 mt)	9,710	8,866	10 %
Australia (35000 mt)	16,986	7,862	116 %
Uruguay	11,808	9,705	22 %
Japan	1	2	-45 %
<b>Total</b>	<b>38,505</b>	<b>26,435</b>	<b>46 %</b>

### Canadian Beef and Veal Import Permits by Type of Meat

YTD July 14, 2014	2014 (tonnes)		Percentage of Total Imports	
	Grinding Beef	Cuts	Total Total (%)	
Japan	0	1	1	0 %
Australia	9	16,976	16,986	44 %
New Zealand	0	9,710	9,710	25 %
Uruguay	226	11,582	11,808	31 %
<b>Total</b>	<b>235</b>	<b>38,270</b>	<b>38,505</b>	<b>100 %</b>
Percentage of Total Imports				
	Grinding Beef		Cuts	
	2014	2013	2014	2013
Australia	0.0 %	15.4 %	44.1 %	14.4 %
New Zealand	0.0 %	14.7 %	25.2 %	18.8 %
Uruguay	0.6 %	34.5 %	30.1 %	2.2 %
<b>Total</b>	<b>0.6 %</b>	<b>64.6 %</b>	<b>99.4 %</b>	<b>35.4 %</b>

Sources : Canadian Slaughter and Grading Data, CBGA, US Data: USDA, Canadian TRQ Data: DFAIT



## Beef Supply at a Glance

### Year To Date for the Week Ending July 12, 2014

#### Weekly Federally Inspected Slaughter

	Fed Slaughter				Non-fed Slaughter				Total Canada
	West	East	Canada	Weekly Avg.	West	East	Canada	Weekly Avg.	
2014-07-12	33,609	10,230	43,839		6,226	1,717	7,943		51,782
2014-07-05	27,780	8,825	36,605		4,423	1,419	5,842		42,447
June 2014	150,238	41,519	191,757	47,939	20,963	6,047	27,010	6,753	218,767
May 2014	178,328	48,350	226,678	45,336	23,983	8,320	32,303	6,461	258,981
April 2014	137,935	40,498	178,433	44,608	20,107	7,475	27,582	6,896	206,015
March 2014	178,443	54,749	233,192	46,638	32,677	9,372	42,049	8,410	275,241
February 2014	120,734	39,279	160,013	40,003	31,269	8,067	39,336	9,834	199,349
January 2014	111,441	37,125	148,566	37,142	34,225	8,999	43,224	10,806	191,790
December 2013	129,571	48,817	178,388	35,678	49,111	10,725	59,836	11,967	238,224
November 2013	118,003	41,585	159,588	39,897	39,756	9,317	49,073	12,268	208,661
October 2013	123,755	43,450	167,205	41,801	32,154	7,032	39,186	9,797	206,391
September 2013	174,998	52,658	227,656	45,531	27,352	6,966	34,318	6,864	261,974
August 2013	132,749	39,384	172,133	43,033	22,682	6,630	29,312	7,328	201,445
July 2013	127,118	41,123	168,241	42,060	22,389	6,049	28,438	7,110	196,679
June 2013	149,357	54,963	204,320	40,864	25,649	8,168	33,817	6,763	238,137
May 2013	131,026	42,211	173,237	43,309	23,723	5,228	28,951	7,238	202,188
April 2013	136,709	45,396	182,105	45,526	23,738	6,313	30,051	7,513	212,156
March 2013	162,105	48,960	211,065	42,213	30,814	9,815	40,629	8,126	251,694
February 2013	115,609	33,933	149,542	37,386	33,082	8,796	41,878	10,470	191,420
January 2013	97,992	33,151	131,143	32,786	35,396	10,182	45,578	11,395	176,721
to date 2014	938,508	280,575	1,219,083	43,539	173,873	51,416	225,289	8,046	1,444,372
Total 2013	1,598,992	525,631	2,124,623	40,858	365,846	95,221	461,067	8,867	2,585,690

Grading								
	Weekly Totals				July 12, 2014			
	West	%	East	%	Canada 2014	%	Canada 2013	%
A - Prime	199	0.6 %	292	2.9 %	491	1.1 %	417	0.9 %
AAA	14976	44.5 %	5,478	53.6 %	20,454	46.6 %	21,619	47.1 %
AA	17090	50.8 %	3,631	35.5 %	20,721	47.2 %	21,384	46.6 %
A	884	2.6 %	350	3.4 %	1,234	2.8 %	1,390	3.0 %
B1, 2, 3, 4	508	1.5 %	472	4.6 %	980	2.2 %	1,108	2.4 %
Year-to-date								
	West	%	East	%	Canada 2014	%	Canada 2013	%
A - Prime	11,045	1.2 %	8,155	2.9 %	19,200	1.6 %	20,584	1.8 %
AAA	526,890	56.4 %	161,923	57.0 %	688,813	56.5 %	650,968	57.4 %
AA	372,190	39.8 %	95,437	33.6 %	467,627	38.4 %	422,624	37.3 %
A	14,395	1.5 %	8,538	3.0 %	22,933	1.9 %	19,957	1.8 %
B1, 2, 3, 4	9,969	1.1 %	10,055	3.5 %	20,024	1.6 %	19,644	1.7 %

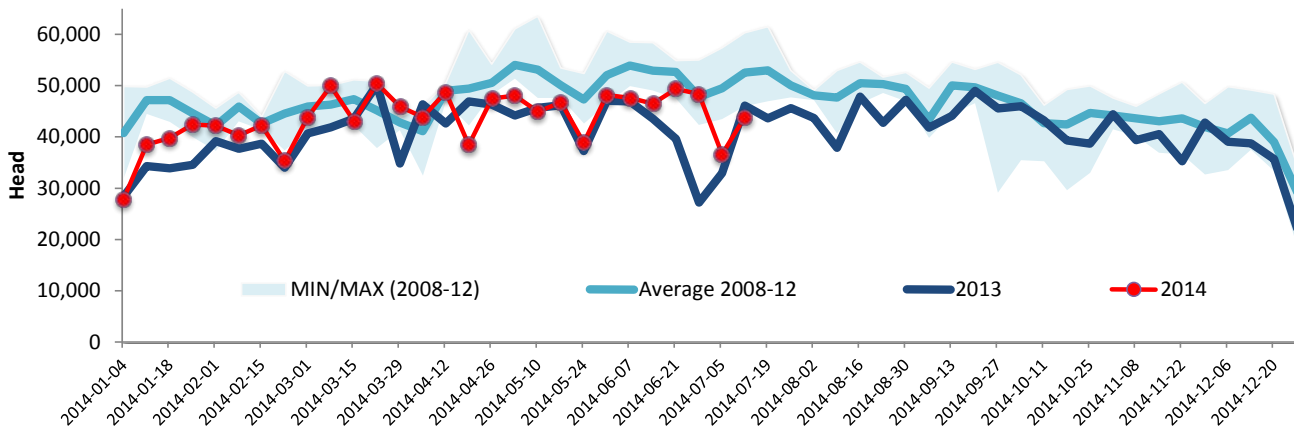
Source : Canadian Beef Grading Agency



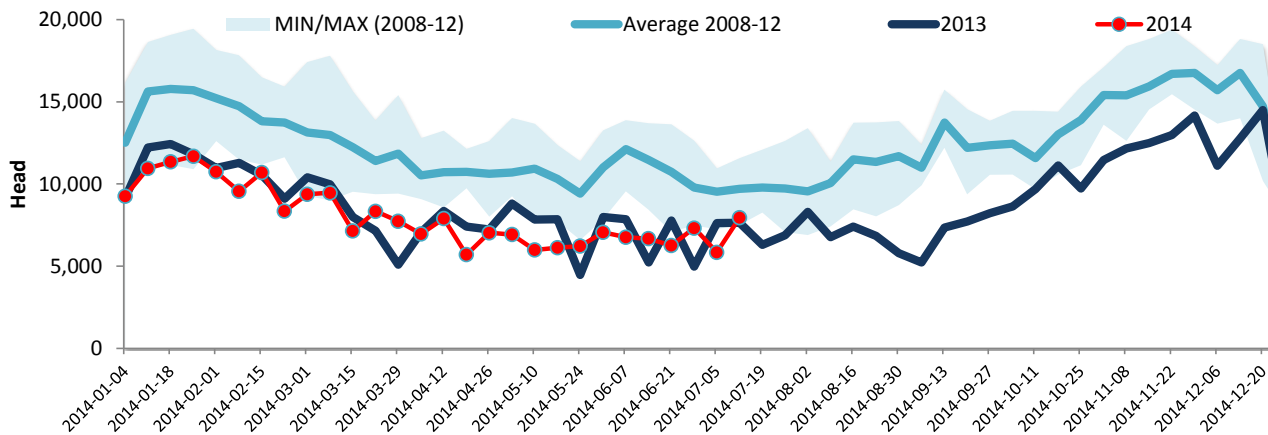
Year To Date for the Week Ending July 12, 2014

Federally Inspected Slaughter

### Canadian Fed Slaughter



### Canadian Non-Fed Slaughter



### Total Cattle Slaughter in Canada

