



Beef Supply at a Glance - CANADA

Year To Date for the Week Ending February 8, 2014

Federally Inspected Slaughterer (head)	West			East			CANADA		
	2014	2013	% chg	2014	2013	% chg	2014	2013	% chg
Steers	111,463	103,239	8 %	41,893	35,861	17 %	153,356	139,100	10 %
Heifers	61,298	54,255	13 %	16,362	14,655	12 %	77,660	68,910	13 %
Cows	50,139	52,953	-5 %	12,960	14,773	-12 %	63,099	67,726	-7 %
Bulls	373	0	-	43	103	-58 %	416	103	-
Total	223,273	210,447	6 %	71,258	65,392	9 %	294,531	275,839	7 %

Carcass Weight (lbs)									
Steers	831	879	-5 %	894	906	-1 %	848	886	-4 %
Heifers	790	816	-3 %	804	818	-2 %	793	816	-3 %
Cows	675	682	-1 %	656	648	1 %	671	675	-1 %
Bulls	889	0	-	974	928	5 %	897	928	-3 %

Beef Output (tonnes)									
Fed	64,114	61,372	4 %	23,003	20,217	14 %	87,105	81,579	7 %
Non-Fed	15,534	16,415	-5 %	3,883	4,395	-12 %	19,415	20,823	-7 %
Total	79,648	77,788	2 %	26,887	24,612	9 %	106,519	102,402	4 %

Source: Canadian Beef Grading Agency

EXPORTS			
For the period Jan. 1 - Feb. 1, 2014			
Live Cattle	2014	2013	% chg
slaughter steers & heifers	33,440	28,710	16 %
feeder cattle & calves	24,318	15,061	61 %
cows & bulls	40,837	35,790	14 %
others*	2,967	1,699	
Total	101,562	81,260	25 %

* = breeding and others

Source: USDA - APHIS

Beef & Veal Exports to US			
(Tonnes) Jan. 1 - Dec. 31			
	2013	2012	% chg
Fresh/chilled cuts	167,610	164,736	2 %
Frozen cuts	13,706	17,693	-23 %
Offals	15,065	13,766	9 %
Processed	1,206	1,183	2 %
TOTAL	197,587	197,378	0 %
Exports (Jan. 1 - Dec. 31)	279,289	271,045	3 %

Source: Statistics Canada

Beef & Veal Exports			
(Tonnes) Jan. 1 to Dec. 31			
	2013	2012	% chg
United States	197,587	197,378	-2 %
Hong Kong	25,373	18,402	38 %
Mexico	17,826	22,469	-29 %
Japan	15,508	13,196	23 %
China	6,495	1,362	
Egypt	2,086	1,828	14 %
Saudi Arabia	1,381	150	-18 %
Macau	1,286	3	
South Korea	1,166	2,247	-48 %
Angola	1,028	393	-50 %
Peru	1,008	0	
Cuba	774	437	59 %
Russia	648	6,283	-90 %
Taiwan	605	372	68 %
Suriname	604	619	-16 %
Others	5,915	5,908	13 %
TOTAL	279,289	271,045	3 %

Source: Statistics Canada

IMPORTS					
For the period Jan. 1 - Dec. 31, 2013					
(# of head)		2013	2012	% chg	
Live Cattle	pure bred	3,498	4,256	-18 %	
From U.S.	non pure bred	54,923	51,419	7 %	
Total		58,421	55,675	5 %	

Source: Statistics Canada

For the period Jan. 1 - Feb. 8, 2014			
Beef and Veal	2014	2013	% chg
(tonnes) preliminary			
United States	16,313	21,973	-26 %
New Zealand	1,100	1,945	-43 %
Australia	2,334	2,077	12 %
Uruguay	1,162	3,484	-67 %
Others	271	153	78 %
Total	21,179	29,631	-29 %
Non-NAFTA Beef/Veal total	4,571	7,402	-38 %
Fresh, chilled & frozen (H.S. 0201, 0202)			

Source: CFIA

Beef & Veal Exports			
('000 \$ CDN) Jan. 1 to Dec. 31			
	2013	2012	% chg
United States	902,108	875,606	1 %
Hong Kong	162,027	78,192	
Mexico	93,202	111,474	-24 %
Japan	75,573	74,721	4 %
China	27,483	4,701	
Egypt	2,768	3,254	-8 %
Saudi Arabia	13,207	1,259	
Macau	6,791	20	
South Korea	7,813	10,035	-28 %
Angola	879	533	65 %
Peru	1,083	4	50 %
Cuba	4,604	3,485	-89 %
Russia	1,814	15,488	24 %
Taiwan	3,200	1,421	9 %
Suriname	3,062	2,636	16 %
Others	23,476	26,090	0 %
TOTAL	1,329,090	1,208,919	10 %

Source: Statistics Canada



UNITED STATES

Year To Date for the Week Ending February 1, 2014

	Weekly	2014	2013	% chg		Weekly	2014	2013	% chg
Slaughter ('000 head)					Carcass Weight (lbs)				
Steers	282.6	1,411.9	1,472.1	-4 %	Steers	874	873	873	0 %
Heifers	172.2	825.9	856.1	-4 %	Heifers	808	808	806	0 %
Cows	107.7	587.1	626.7	-6 %	Cows	626	624	619	1 %
Bulls	9.3	45.2	45.1	0 %	Bulls	878	873	882	-1 %
Total	571.9	2,870.1	2,999.9	-4 %					
Total (Jan. To Dec. 2013)			31,796.9						Source : USDA

Beef Output (tonnes)				National Summary of Beef Graded			
					Dec 2013	2012	2011
Fed	863,543	897,780	-4 %	Prime	4.2 %	3.6 %	3.6 %
Non-Fed	184,337	194,391	-5 %	Choice	67.3 %	65.2 %	65.3 %
Total	1,047,880	1,092,171	-4 %	Select	28.4 %	30.9 %	30.7 %
Total (Jan. To Dec. 2013)		11,615,011					

Cattle Slaughter for the Week Ending					2014-02-01			
For the period	Jan. - Dec.	2013	2012	% chg	2014	2013	% chg	
U.S. Beef and Veal Imports (carcass weight, ' 000 lbs)					Canada	52,899	50,140	6 %
Canada		538,188	537,499	0 %	US	571,874	618,674	-8 %
Australia		623,884	654,523	-5 %	Total Canada & US	624,773	668,814	-7 %
New Zealand		526,196	495,329	6 %				
Other		561,805	532,375	6 %				
Total		2,250,073	2,219,726	1 %				

U.S. Beef and Veal Exports (carcass weight, ' 000 lbs)					Cattle Slaughter Year to Date		
					2014	2013	% chg
Mexico	402,979	351,700	15 %	Canada	244,689	226,861	8 %
Canada	462,951	467,336	-1 %	US	2,870,003	2,999,891	-4 %
Japan	670,988	449,301	49 %	Total Canada & US	3,114,692	3,226,752	-3 %
Other	1,046,834	1,184,314	-12 %				
Total	2,583,752	2,452,651	5 %				

US Live Cattle Imports				
Mexico - Feeder (Jan 1-Feb. 8, 2014)		91,542	114,277	-20 %
Canada (Jan. 1 - Feb. 1, 2014)		101,562	81,260	25 %

Canada and United States Beef and Veal Tariff Rate Quota Summary

US Beef and Veal Tariff Rate Quota (TRQ) Summary

YTD Week Ending Feb. 10, 2014		2014		2013		2014 VS 2013	
	Quota level	Tonnes entered	% filled	Tonnes entered	% filled		
Australia	378,214	14,767	4 %	15,173	4%	-3 %	
New Zealand	213,402	9,693	5 %	13,414	6%	-28 %	
Argentina	20,000	0	0 %	0	0%		
Uruguay	20,000	614	3 %	1,445	7%	-58 %	
Japan	200	10	5 %	7	3%		
Others	64,805	3,479	5 %	4,161	6%	-16 %	
Total TRQ	696,621	28,562	4 %	34,200	5%	-16 %	
TRQ (Australia, N. Z.)	591,616	24,460	4 %	28,587	5%	-14 %	
Canada	no limit	12,211	n/a	12,635	n/a		
Mexico	no limit	6,698	n/a	7,821	n/a		

Canadian Beef and Veal Import Permits by Country

YTD Week Ending Jan. 25, 2014			
	2014	2013	% chg
Global quota (tonnes)	76,409	76,409	0 %
Supp. Quota Authorized	-	-	
Total quota	76,409	76,409	0 %
Permits issued			
New Zealand (29600 mt)	868	1,202	-28 %
Australia (35000 mt)	1,665	1,726	-4 %
Uruguay	1,347	2,227	-40 %
Japan	0	0	
Total	3,880	5,155	-25 %

Canadian Beef and Veal Import Permits by Type of Meat

YTD Jan. 25, 2014			
2014		(tonnes)	
	Grinding Beef	Cuts	Total Total (%)
Japan	0	0	0
Australia	9	1,656	1,665
New Zealand	0	868	868
Uruguay	226	1,121	1,347
Total	235	3,645	3,880
Percentage of Total Imports			
	2014	2013	2014
Australia	0.2 %	14.7 %	42.7 %
New Zealand	0.0 %	6.2 %	22.4 %
Argentina			
Uruguay	5.8 %	15.4 %	28.9 %
Total	6.1 %	36.3 %	93.9 %

Sources : Canadian Slaughter and Grading Data, CBGA, US Data: USDA, Canadian TRQ Data: DFAIT



Beef Supply at a Glance

Year To Date for the Week Ending February 8, 2014

Weekly Federally Inspected Slaughter

	Fed Slaughter				Non-fed Slaughter				Total Canada
	West	East	Canada	Weekly Avg.	West	East	Canada	Weekly Avg.	
2014-02-15									
2014-02-08	29,726	10,565	40,291		7,516	2,035	9,551		
2014-02-01	31,594	10,565	42,159		8,771	1,969	10,740		
January 2014	111,441	37,125	148,566	37,142	34,225	8,999	43,224	10,806	191,790
December 2013	129,571	48,817	178,388	35,678	49,111	10,725	59,836	11,967	238,224
November 2013	118,003	41,585	159,588	39,897	39,756	9,317	49,073	12,268	208,661
October 2013	123,755	43,450	167,205	41,801	32,154	7,032	39,186	9,797	206,391
September 2013	174,998	52,658	227,656	45,531	27,352	6,966	34,318	6,864	261,974
August 2013	132,749	39,384	172,133	43,033	22,682	6,630	29,312	7,328	201,445
July 2013	127,118	41,123	168,241	42,060	22,389	6,049	28,438	7,110	196,679
June 2013	149,357	54,963	204,320	40,864	25,649	8,168	33,817	6,763	238,137
May 2013	131,026	42,211	173,237	43,309	23,723	5,228	28,951	7,238	202,188
April 2013	136,709	45,396	182,105	45,526	23,738	6,313	30,051	7,513	212,156
March 2013	162,105	48,960	211,065	42,213	30,814	9,815	40,629	8,126	251,694
February 2013	115,609	33,933	149,542	37,386	33,082	8,796	41,878	10,470	191,420
January 2013	97,992	33,151	131,143	32,786	35,396	10,182	45,578	11,395	176,721
to date 2014	172,761	58,255	231,016	38,503	50,512	13,003	63,515	10,586	294,531
Total 2013	1,598,992	525,631	2,124,623	40,858	365,846	95,221	461,067	8,867	2,585,690

Grading								
	Weekly Totals				February 8, 2014			
	West	%	East	%	Canada 2014	%	Canada 2013	%
A - Prime	311	1.0 %	294	2.7 %	605	1.5 %	584	1.5 %
AAA	17,841	59.8 %	6,100	56.9 %	23,941	59.0 %	21,425	56.5 %
AA	11,170	37.5 %	3,700	34.5 %	14,870	36.7 %	14,729	38.8 %
A	338	1.1 %	266	2.5 %	604	1.5 %	563	1.5 %
B1, 2, 3, 4	159	0.5 %	366	3.4 %	525	1.3 %	632	1.7 %
Year-to-date								
	West	%	East	%	Canada 2014	%	Canada 2013	%
A - Prime	1,338	0.8 %	1,790	3.0 %	3,128	1.3 %	3,248	1.5 %
AAA	95,336	55.2 %	33,935	57.2 %	129,271	55.7 %	116,503	55.6 %
AA	73,071	42.3 %	19,926	33.6 %	92,997	40.1 %	83,441	39.8 %
A	1,927	1.1 %	1,616	2.7 %	3,543	1.5 %	2,949	1.4 %
B1, 2, 3, 4	1,032	0.6 %	2,029	3.4 %	3,061	1.3 %	3,545	1.7 %

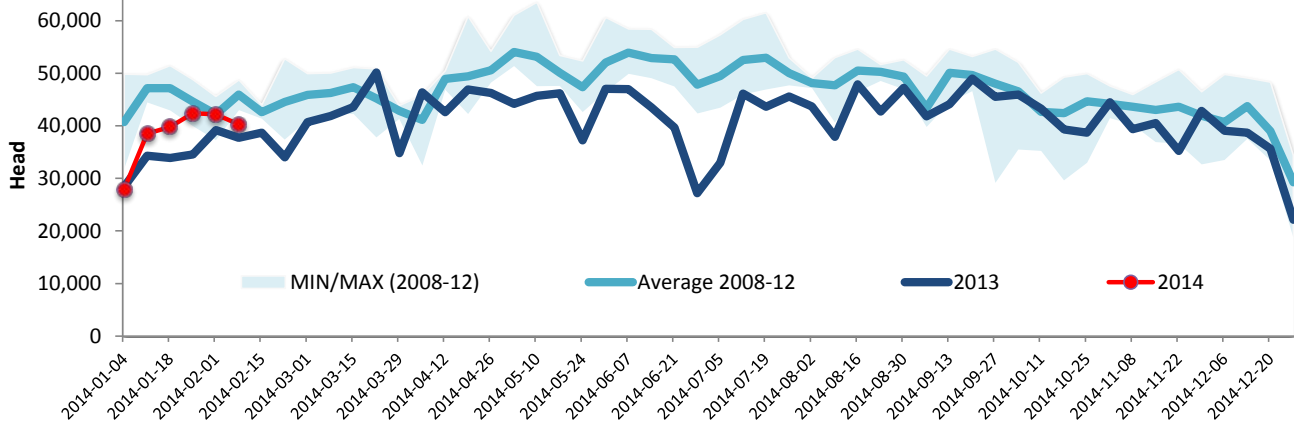
Source : Canadian Beef Grading Agency



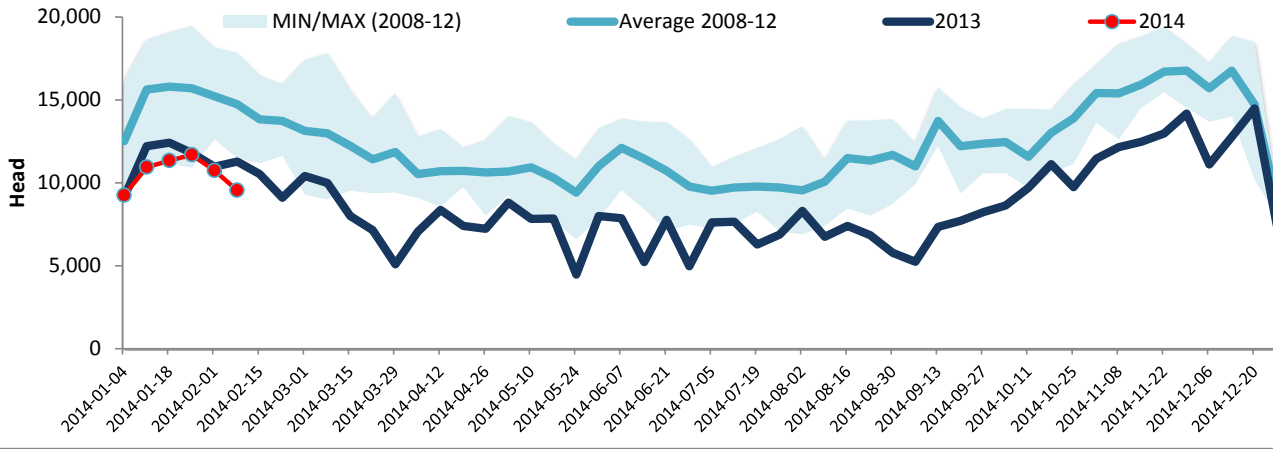
Year To Date for the Week Ending February 8, 2014

Federally Inspected Slaughter

Canadian Fed Slaughter



Canadian Non-Fed Slaughter



Total Cattle Slaughter in Canada

