



Beef Supply at a Glance - CANADA

Year To Date for the Week Ending December 7, 2013

Federally Inspected Slaughterer (head)	West			East			CANADA		
	2013	2012	% chg	2013	2012	% chg	2013	2012	% chg
Steers	920,464	947,412	-3 %	362,576	349,849	4 %	1,283,040	1,297,261	-1 %
Heifers	607,008	645,851	-6 %	138,062	149,790	-8 %	745,070	795,641	-6 %
Cows	332,962	250,093	33 %	88,922	133,722	-34 %	421,884	383,815	10 %
Bulls	4,113	12,036	-66 %	515	1,731	-70 %	4,628	13,767	-66 %
Total	1,864,547	1,855,392	0 %	590,075	635,092	-7 %	2,454,622	2,490,484	-1 %

Carcass Weight (lbs)									
Steers	869	874	-1 %	892	892	0 %	876	879	0 %
Heifers	818	825	-1 %	799	800	0 %	815	821	-1 %
Cows	679	699	-3 %	654	637	3 %	675	678	0 %
Bulls	893	1,039	-14 %	880	934	-6 %	891	1,026	-13 %

Beef Output (tonnes)									
Fed	589,280	618,575	-5 %	197,150	196,317	0 %	786,898	815,233	-3 %
Non-Fed	104,434	85,146	23 %	26,640	39,453	-32 %	131,316	124,705	5 %
Total	693,714	703,721	-1 %	223,790	235,770	-5 %	918,214	939,939	-2 %

Source: Canadian Beef Grading Agency

EXPORTS			
For the period Jan. 1 - Nov. 30, 2013			
Live Cattle	2013	2012	% chg
slaughter steers & heifers	324,317	391,518	-17 %
feeder cattle & calves	283,694	130,632	117 %
cows & bulls	380,578	222,542	71 %
others*	9,321	7,123	31 %
Total	997,910	751,815	33 %

*= breeding and others
Source: USDA - APHIS

Beef & Veal Exports to US			
(Tonnes) Jan. 1 - Oct. 31			
	2013	2012	% chg
Fresh/chilled cuts	140,528	148,252	-5 %
Frozen cuts	10,726	14,499	-26 %
Offals	12,799	12,322	4 %
Processed	994	967	3 %
TOTAL	165,046	176,039	-6 %
Exports (Jan. 1 - Dec. 31)		271,045	

Source: Statistics Canada

Beef & Veal Exports			
(Tonnes) Jan. 1 to Oct. 31			
	2013	2012	% chg
United States	165,046	176,039	-6 %
Hong Kong	20,982	15,625	34 %
Mexico	14,147	20,869	-32 %
Japan	13,773	10,776	28 %
China	4,961	938	
Egypt	2,050	1,614	27 %
Saudi Arabia	1,282	107	
Macau	1,263	3	
Peru	957	0	
Angola	844	366	
South Korea	839	1,668	-50 %
Russia	623	5,579	-89 %
Suriname	527	557	-5 %
Cuba	513	311	65 %
Philippines	491	859	-43 %
Others	5,128	4,161	23 %
TOTAL	233,427	239,472	-3 %

Source: Statistics Canada

IMPORTS			
For the period Jan. 1 - Oct. 31, 2013			
(# of head)	2013	2012	% chg
Live Cattle pure bred	2,909	3,776	-23 %
From U.S. non pure bred	49,872	42,833	16 %
Total	52,781	46,609	13 %

Source: Statistics Canada

For the period Jan. 1 - Dec. 7, 2013			
Beef and Veal	2013	2012	% chg
(tonnes) preliminary			
United States	163,413	165,523	-1 %
New Zealand	13,464	19,674	-32 %
Australia	15,551	14,436	8 %
Uruguay	12,000	10,448	15 %
Others	3,522	3,346	5 %
Total	207,950	213,427	-3 %
Non-NAFTA Beef/Veal total	40,479	44,226	-8 %
Fresh, chilled & frozen (H.S. 0201, 0202)			

Source: CFIA

Beef & Veal Exports			
('000 \$ CDN) Jan. 1 to Oct. 31			
	2013	2012	% chg
United States	747,844	781,752	-4 %
Hong Kong	133,583	61,003	
Mexico	73,682	102,607	-28 %
Japan	68,018	62,403	9 %
China	18,731	3,347	
Egypt	2,662	2,987	-11 %
Saudi Arabia	12,224	879	
Macau	6,580	20	
Peru	1,044	0	
Angola	745	509	46 %
South Korea	4,633	7,556	-39 %
Russia	1,718	13,947	-88 %
Suriname	2,673	2,341	14 %
Cuba	3,117	2,734	14 %
Philippines	2,175	2,623	-17 %
Others	20,359	18,522	10 %
TOTAL	1,099,789	1,063,228	3 %

Source: Statistics Canada

**UNITED STATES**

Year To Date for the Week Ending November 30, 2013

	Weekly	2013	2012	% chg	Weekly	2013	2012	% chg
Slaughter ('000 head)					Carcass Weight (lbs)			
Steers	286.3	14,788.6	14,960.1	-1 %	Steers	875	863	857 1 %
Heifers	157.5	8,432.4	8,575.8	-2 %	Heifers	807	793	791 0 %
Cows	102.9	5,771.9	5,902.5	-2 %	Cows	625	620	608 2 %
Bulls	9.2	518.6	509.0	2 %	Bulls	871	881	878 0 %
Total	555.9	29,511.5	29,947.3	-1 %				
Total (Jan. To Dec. 2012)			32,336.9					Source : USDA

Beef Output (tonnes)

Fed	8,840,652	8,911,027	-1 %
Non-Fed	1,834,326	1,834,356	0 %
Total	10,674,978	10,745,383	-1 %
Total (Jan. To Dec. 2012)		11,615,011	

National Summary of Beef Graded

	Oct 2013	2012	2011
Prime	4.0 %	3.7 %	3.6 %
Choice	62.6 %	65.2 %	65.3 %
Select	32.9 %	30.3 %	30.7 %

Cattle Slaughter for the Week Ending

	2013	2012	% chg
Canada	56,992	44,540	28 %
US	555,868	639,376	-13 %
Total Canada & US	612,860	683,916	-10 %

Cattle Slaughter Year to Date

	2013	2012	% chg
Canada	2,404,458	2,444,565	-2 %
US	29,511,540	29,947,340	-1 %
Total Canada & US	31,915,998	32,391,905	-1 %

US Live Cattle Imports

Mexico - Feeder (Jan 1-Dec. 2, 2013)	857,822	1,353,275	-37 %
Canada (Jan. 1 - Nov. 30, 2013)	997,910	751,815	33 %

For the period	Jan. - Oct.	2013	2012	% chg
U.S. Beef and Veal Imports (carcass weight, ' 000 lbs)				
Canada	448,834	480,038	-7 %	
Australia	510,964	548,841	-7 %	
New Zealand	479,158	442,705	8 %	
Other	478,496	436,056	10 %	
Total	1,917,452	1,907,640	1 %	

U.S. Beef and Veal Exports (carcass weight, ' 000 lbs)

Mexico	321,984	305,252	5 %
Canada	397,155	373,607	6 %
Japan	577,717	393,155	47 %
Other	842,859	983,740	-14 %
Total	2,139,715	2,055,754	4 %

Canada and United States Beef and Veal Tariff Rate Quota Summary**US Beef and Veal Tariff Rate Quota (TRQ) Summary**

YTD Week Ending Dec. 9, 2013	2013			2012			2013 VS 2012
Quota level	Tonnes entered	% filled	Tonnes entered	% filled			
Australia	378,214	183,313	48 %	195,071	52 %	-6 %	
New Zealand	213,402	160,550	75 %	147,996	69 %	8 %	
Argentina	20,000	0	0 %	0	0 %		
Uruguay	20,000	17,833	89 %	15,488	77 %	15 %	
Japan	200	88	44 %	24	12 %		
Others	64,805	38,563	60 %	44,864	69 %	-14 %	
Total TRQ	696,621	400,348	57 %	403,443	58 %	-1 %	
TRQ (Australia, N. Z.)	591,616	343,863	58 %	343,067	58 %	0 %	
Canada	no limit	162,505	n/a	169,444	n/a	-4 %	
Mexico	no limit	82,982	n/a	78,993	n/a	5 %	

Canadian Beef and Veal Import Permits by Country

YTD Week Ending Dec. 9, 2013	2013	2012	% chg
Global quota (tonnes)	76,409	76,409	0 %
Supp. Quota Authorized	-	-	
Total quota	76,409	76,409	0 %
Permits issued			
New Zealand (29600 mt)	13,292	19,768	-33 %
Australia (35000 mt)	16,362	13,924	18 %
Uruguay	11,806	10,420	13 %
Japan	3	0	
Total	41,463	44,112	-6 %

Canadian Beef and Veal Import Permits by Type of Meat

YTD Dec. 9, 2013	2013 (tonnes)		Percentage of Total Imports	
	Grinding Beef	Cuts	2013	2012
Japan	0	3		
Australia	10,316	6,046	14.6 %	8.9 %
New Zealand	5,652	7,640	18.4 %	23.3 %
Uruguay	10,911	894	2.2 %	2.0 %
Total	26,880	14,583	35.2 %	34.2 %
	Percentage of Total Imports			
	Grinding Beef	Cuts		
	2013	2012	2013	2012
Australia	24.9 %	12.4 %	14.6 %	8.9 %
New Zealand	13.6 %	16.1 %	18.4 %	23.3 %
Argentina				
Uruguay	26.3 %	18.9 %	2.2 %	2.0 %
Total	64.8 %	47.5 %	35.2 %	34.2 %

Sources : Canadian Slaughter and Grading Data, CBGA, US Data: USDA, Canadian TRQ Data: DFAIT



Beef Supply at a Glance
Year To Date for the Week Ending December 7, 2013

Weekly Federally Inspected Slaughter

	Fed Slaughter				Non-fed Slaughter				Total Canada
	West	East	Canada	Weekly Avg.	West	East	Canada	Weekly Avg.	
2013-12-07	26,846	12,206	39,052		8,867	2,245	11,112		50,164
2013-11-30	31,205	11,618	42,823		11,473	2,696	14,169		56,992
2013-11-23	25,252	9,990	35,242		10,568	2,410	12,978		48,220
2013-11-16	29,693	10,845	40,538		10,195	2,291	12,486		53,024
2013-11-09	29,075	10,289	39,364		10,021	2,128	12,149		51,513
2013-11-02	33,983	10,461	44,444		8,972	2,488	11,460		55,904
2013-10-26	27,871	10,797	38,668		7,864	1,869	9,733		48,401
2013-10-19	30,555	8,768	39,323		9,406	1,719	11,125		50,448
2013-10-12	32,104	11,150	43,254		7,876	1,813	9,689		52,943
2013-10-05	33,225	12,735	45,960		7,008	1,631	8,639		54,599
2013-09-28	34,009	11,527	45,536		6,761	1,465	8,226		53,762
2013-09-21	38,360	10,612	48,972		6,287	1,433	7,720		56,692
2013-09-14	33,391	10,729	44,120		5,929	1,424	7,353		51,473
2013-09-07	33,136	8,653	41,789		4,195	1,039	5,234		47,023
2013-08-31	36,102	11,137	47,239		4,180	1,605	5,785		53,024
August 2013	132,749	39,384	172,133	43,033	22,682	6,630	29,312	7,328	201,445
July 2013	127,118	41,123	168,241	42,060	22,389	6,049	28,438	7,110	196,679
June 2013	149,357	54,963	204,320	40,864	25,649	8,168	33,817	6,763	238,137
May 2013	131,026	42,211	173,237	43,309	23,723	5,228	28,951	7,238	202,188
April 2013	136,709	45,396	182,105	45,526	23,738	6,313	30,051	7,513	212,156
March 2013	162,105	48,960	211,065	42,213	30,814	9,815	40,629	8,126	251,694
February 2013	115,609	33,933	149,542	37,386	33,082	8,796	41,878	10,470	191,420
January 2013	97,992	33,151	131,143	32,786	35,396	10,182	45,578	11,395	176,721
to date 2013	1,527,472	500,638	2,028,110	41,390	337,075	89,437	426,512	8,704	2,454,622
Total 2012	1,659,439	525,503	2,184,942	42,018	284,541	141,670	426,211	8,196	2,611,153

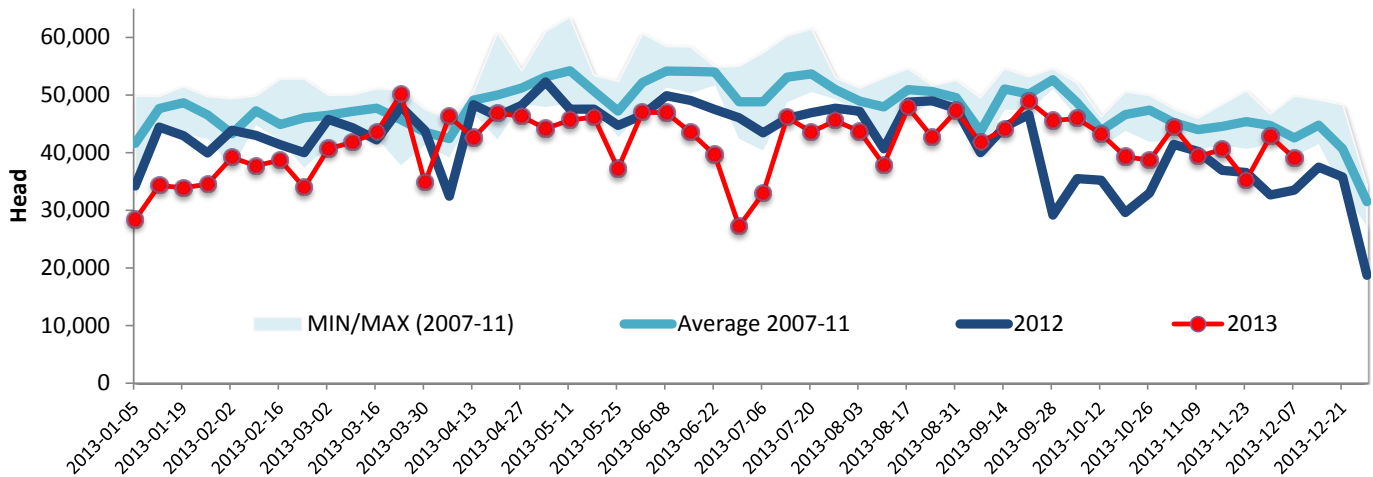
Grading	Weekly Totals December 7, 2013							
	West	%	East	%	Canada 2013	%	Canada 2012	%
A - Prime	379	1.4 %	342	2.8 %	721	1.8 %	472	1.4 %
AAA	15,003	55.8 %	7,202	58.3 %	22,205	56.6 %	18,409	56.4 %
AA	10,719	39.9 %	4,085	33.1 %	14,804	37.7 %	12,423	38.1 %
A	334	1.2 %	286	2.3 %	620	1.6 %	654	2.0 %
B1, 2, 3, 4	437	1.6 %	431	3.5 %	868	2.2 %	688	2.1 %
Year-to-date								
Grading	West	%	East	%	Canada 2013	%	Canada 2012	%
A - Prime	21,514	1.4 %	10,654	2.1 %	32,168	1.6 %	22,583	1.1 %
AAA	841,076	55.1 %	275,711	54.3 %	1,116,787	54.9 %	1,124,941	54.5 %
AA	612,368	40.1 %	188,198	37.1 %	800,566	39.4 %	835,064	40.5 %
A	27,071	1.8 %	14,344	2.8 %	41,415	2.0 %	42,178	2.0 %
B1, 2, 3, 4	23,579	1.5 %	18,770	3.7 %	42,349	2.1 %	37,798	1.8 %



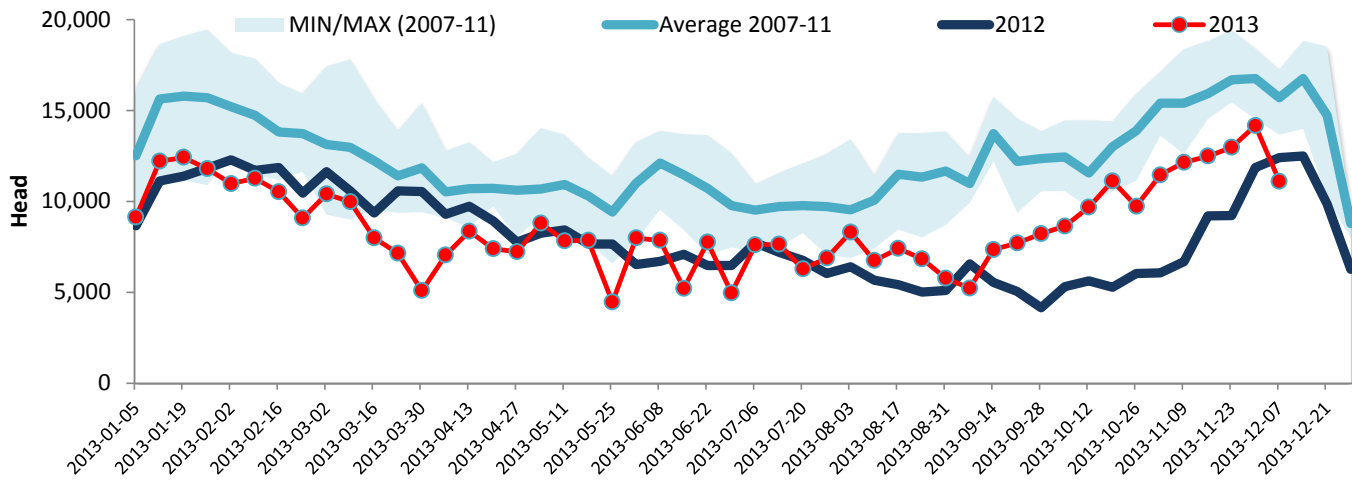
Year To Date for the Week Ending December 7, 2013

Federally Inspected Slaughter

Canadian Fed Slaughter



Canadian Non-Fed Slaughter



Total Cattle Slaughter in Canada

