



# Beef Supply at a Glance - CANADA

Year To Date for the Week Ending August 2, 2014

Federally Inspected Slaughter (head)	West			East			CANADA		
	2014	2013	% chg	2014	2013	% chg	2014	2013	% chg
Steers	609,966	572,704	7 %	219,908	218,298	1 %	829,874	791,002	5 %
Heifers	430,960	380,508	13 %	89,706	91,809	-2 %	520,666	472,317	10 %
Cows	187,967	199,153	-6 %	55,605	56,151	-1 %	243,572	255,304	-5 %
Bulls	2,378	2,076	15 %	277	268	3 %	2,655	2,344	13 %
<b>Total</b>	<b>1,231,271</b>	<b>1,154,441</b>	<b>7 %</b>	<b>365,496</b>	<b>366,526</b>	<b>0 %</b>	<b>1,596,767</b>	<b>1,520,967</b>	<b>5 %</b>

Carcass Weight (lbs)									
Steers	829	864	-4 %	884	889	-1 %	843	871	-3 %
Heifers	784	819	-4 %	796	805	-1 %	786	817	-4 %
Cows	688	682	1 %	656	652	1 %	681	676	1 %
Bulls	922	913	1 %	904	901	0 %	920	912	1 %

Beef Output (tonnes)									
Fed	383,425	366,727	5 %	120,820	121,809	-1 %	504,012	488,536	3 %
Non-Fed	59,779	62,621	-5 %	16,694	16,762	0 %	76,507	79,410	-4 %
<b>Total</b>	<b>443,204</b>	<b>429,348</b>	<b>3 %</b>	<b>137,515</b>	<b>138,571</b>	<b>-1 %</b>	<b>580,519</b>	<b>567,946</b>	<b>2 %</b>

Source: Canadian Beef Grading Agency

EXPORTS			
For the period Jan. 1 - July 26, 2014			
Live Cattle	2014	2013	% chg
slaughter steers & heifers	228,220	227,917	0 %
feeder cattle & calves	233,325	166,662	40 %
cows & bulls	192,154	207,235	-7 %
others*	16,969	6,642	
<b>Total</b>	<b>670,668</b>	<b>608,456</b>	<b>10 %</b>

\*= breeding and others  
Source: USDA - APHIS

Beef & Veal Exports to US			
For the period Jan. 1 - May 31, 2014			
(Tonnes)	2014	2013	% chg
Fresh/chilled cuts	78,243	70,279	11 %
Frozen cuts	5,046	6,721	-25 %
Offals	7,009	5,521	27 %
Processed	674	461	46 %
<b>TOTAL</b>	<b>90,972</b>	<b>82,982</b>	<b>10 %</b>
Exports (Jan. 1 - Dec. 31)		278,966	-100 %

Source: Statistics Canada

Beef & Veal Exports			
For the period Jan. 1 - May 31, 2014			
(Tonnes)	2014	2013	% chg
United States	90,972	82,982	10 %
Hong Kong	9,731	11,068	-12 %
Mexico	9,483	6,152	54 %
Japan	5,323	5,865	-9 %
China	3,465	2,010	72 %
Peru	1,115	226	
Egypt	1,060	714	48 %
Taiwan	621	232	
Angola	580	263	
Saudi Arabia	424	814	-48 %
South Korea	418	654	-36 %
Suriname	345	317	9 %
Ivory Coast	277	280	-1 %
Cuba	221	177	25 %
Senegal	210	210	0 %
Others	1,868	3,636	-49 %
<b>TOTAL</b>	<b>126,114</b>	<b>115,600</b>	<b>9 %</b>

Source: Statistics Canada

IMPORTS			
For the period Jan. 1 - May 31, 2014			
(# of head)	2014	2013	% chg
Live Cattle pure bred	1,133	1,357	-17 %
From U.S. non pure bred	18,282	18,622	-2 %
<b>Total</b>	<b>19,415</b>	<b>19,979</b>	<b>-3 %</b>

Source: Statistics Canada

Beef and Veal			
For the period Jan. 1 - Aug. 2, 2014			
(tonnes)	2014	2013	% chg
United States	83,943	107,515	-22 %
Australia	16,779	8,875	89 %
Uruguay	11,073	10,248	8 %
New Zealand	9,661	10,540	-8 %
Others	2,249	2,176	3 %
<b>Total</b>	<b>123,705</b>	<b>139,353</b>	<b>-11 %</b>
<b>Non-NAFTA Beef/Veal total</b>	<b>37,628</b>	<b>29,324</b>	<b>28 %</b>
Fresh, chilled & frozen (H.S. 0201, 0202)			

Source: CFIA

Beef & Veal Exports			
For the period Jan. 1 - May 31, 2014			
('000 \$ CDN)	2014	2013	% chg
United States	516,640	371,152	39 %
Hong Kong	69,143	69,285	0 %
Mexico	56,974	32,130	77 %
Japan	26,752	29,303	-9 %
China	17,850	7,761	
Peru	1,936	274	
Egypt	1,473	972	51 %
Taiwan	3,884	928	
Angola	534	303	76 %
Saudi Arabia	3,335	7,124	-53 %
South Korea	4,102	2,697	52 %
Suriname	1,459	1,574	-7 %
Ivory Coast	222	278	-20 %
Cuba	775	1,330	-42 %
Senegal	167	132	27 %
Others	8,935	17,055	-48 %
<b>TOTAL</b>	<b>714,179</b>	<b>542,296</b>	<b>32 %</b>

Source: Statistics Canada



# UNITED STATES

Year To Date for the Week Ending July 26, 2014

	Weekly	2014	2013	% chg		Weekly	2014	2013	% chg
<b>Slaughter ('000 head)</b>					<b>Carcass Weight (lbs)</b>				
Steers	314.9	9,001.3	9,229.3	-2 %	Steers	870	861	857	0 %
Heifers	148.8	4,845.8	5,241.7	-8 %	Heifers	786	790	790	0 %
Cows	96.1	3,155.2	3,644.6	-13 %	Cows	622	628	622	1 %
Bulls	11.7	309.3	307.0	1 %	Bulls	912	897	886	1 %
<b>Total</b>	<b>571.53</b>	<b>17,311.7</b>	<b>18,422.6</b>	<b>-6 %</b>					

Total (Jan. To Dec. 2013)

31,796.9

Source : USDA

## Beef Output (tonnes)

Fed	5,262,898	5,477,474	-4 %
Non-Fed	1,026,771	1,154,055	-11 %
<b>Total</b>	<b>6,289,669</b>	<b>6,631,529</b>	<b>-5 %</b>
Total (Jan. To Dec. 2013)		11,504,554	

## National Summary of Beef Graded

	Jun 2014	2013	2012
Prime	3.7 %	3.9 %	3.6 %
Choice	67.9 %	66.5 %	65.2 %
Select	28.1 %	29.5 %	30.9 %

## Cattle Slaughter for the Week Ending

2014-07-26

For the period	Jan. - Jun.	2014	2013	% chg		2014	2013	% chg	
<b>U.S. Beef and Veal Imports (carcass weight, '000,000 lbs)</b>					<b>Cattle Slaughter Year to Date</b>				
Canada		301	270	11 %	Canada	52,054	52,469	-1 %	
Australia		406	299	36 %	US	571,525	639,923	-11 %	
New Zealand		363	352	3 %	<b>Total Canada &amp; US</b>	<b>623,579</b>	<b>692,392</b>	<b>-10 %</b>	
Other		294	297	-1 %					
<b>Total</b>		<b>1,364</b>	<b>1,219</b>	<b>12 %</b>					

## U.S. Beef and Veal Exports (carcass weight, '000,000 lbs)

Mexico	221	166	33 %
Canada	187	236	-21 %
Japan	304	328	-7 %
Other	538	464	16 %
<b>Total</b>	<b>1,250</b>	<b>1,194</b>	<b>5 %</b>

## US Live Cattle Imports

Mexico - Feeder (Jan 1-Aug. 2, 2014)	600,958	538,019	12 %
Canada (Jan. 1 - July 26, 2014)	670,668	608,456	10 %

## Canada and United States Beef and Veal Tariff Rate Quota Summary

### US Beef and Veal Tariff Rate Quota (TRQ) Summary

YTD Week Ending Aug. 4, 2014	2014			2013		
Quota level	Tonnes entered	% filled	Tonnes entered	% filled	2014 VS 2013	
Australia	378,214	154,436	41 %	111,501	29%	39 %
New Zealand	213,402	133,138	62 %	126,195	59%	6 %
Argentina	20,000	0	0 %	0	0%	
Uruguay	20,000	10,843	54 %	13,799	69%	-21 %
Japan	200	73	36 %	48	24%	53 %
Others	64,805	25,448	39 %	24,062	37%	6 %
<b>Total TRQ</b>	<b>696,621</b>	<b>323,937</b>	<b>47 %</b>	<b>275,605</b>	<b>40%</b>	<b>18 %</b>
<b>TRQ (Australia, N. Z.)</b>	<b>591,616</b>	<b>287,574</b>	<b>49 %</b>	<b>237,696</b>	<b>40%</b>	<b>21 %</b>
Canada	no limit	109,413	n/a	99,834	n/a	
Mexico	no limit	58,864	n/a	53,522	n/a	

### Canadian Beef and Veal Import Permits by Country

### Canadian Beef and Veal Import Permits by Type of Meat\*

YTD Week Ending Aug. 4, 2014	2014			2014 (tonnes)				
	2014	2013	% chg	Grinding Beef		Cuts	Total Total (%)	
Global quota (tonnes)	76,409	76,409	0 %	Japan	0	1	1 0 %	
Supp. Quota Authorized	-	-		Australia	9	17,876	17,885 44 %	
<b>Total quota</b>	<b>76,409</b>	<b>76,409</b>	<b>0 %</b>	New Zealand	0	10,599	10,599 26 %	
Permits issued				Uruguay	226	11,582	11,808 29 %	
New Zealand (29600 mt)	10,599	10,078	5 %	<b>Total</b>	<b>235</b>	<b>40,057</b>	<b>40,293 100 %</b>	
Australia (35000 mt)	17,885	8,881	101 %	YTD Aug. 4, 2014				
Uruguay	11,808	10,266	15 %	Percentage of Total Imports				
Japan	1	2	-51 %	Grinding Beef		Cuts		
<b>Total</b>	<b>40,293</b>	<b>29,228</b>	<b>38 %</b>	2014	2013	2014	2013	
Over quota tariff rate : 26.5 %				Australia	0.0 %	15.2 %	44.4 %	15.2 %
				New Zealand	0.0 %	16.1 %	26.3 %	18.4 %
				Uruguay	0.6 %	32.8 %	28.7 %	2.3 %
				<b>Total</b>	<b>0.6 %</b>	<b>64.0 %</b>	<b>99.4 %</b>	<b>36.0 %</b>

\* Although 2014 totals are correct, data has been misallocated (grinding beef vs cuts) and is being revised.

Sources : Canadian Slaughter and Grading Data, CBGA, US Data: USDA, Canadian TRQ Data: DFATD



## Beef Supply at a Glance

### Year To Date for the Week Ending August 2, 2014

#### Weekly Federally Inspected Slaughter

	Fed Slaughter				Non-fed Slaughter				Total Canada
	West	East	Canada	Weekly Avg.	West	East	Canada	Weekly Avg.	
2014-08-02	32,535	10,780	43,315		5,432	1,507	6,939		50,254
July 2014	131,272	37,314	168,586	42,147	21,689	6,095	27,784	6,946	196,370
June 2014	150,238	41,519	191,757	47,939	20,963	6,047	27,010	6,753	218,767
May 2014	178,328	48,350	226,678	45,336	23,983	8,320	32,303	6,461	258,981
April 2014	137,935	40,498	178,433	44,608	20,107	7,475	27,582	6,896	206,015
March 2014	178,443	54,749	233,192	46,638	32,677	9,372	42,049	8,410	275,241
February 2014	120,734	39,279	160,013	40,003	31,269	8,067	39,336	9,834	199,349
January 2014	111,441	37,125	148,566	37,142	34,225	8,999	43,224	10,806	191,790
December 2013	129,571	48,817	178,388	35,678	49,111	10,725	59,836	11,967	238,224
November 2013	118,003	41,585	159,588	39,897	39,756	9,317	49,073	12,268	208,661
October 2013	123,755	43,450	167,205	41,801	32,154	7,032	39,186	9,797	206,391
September 2013	174,998	52,658	227,656	45,531	27,352	6,966	34,318	6,864	261,974
August 2013	132,749	39,384	172,133	43,033	22,682	6,630	29,312	7,328	201,445
July 2013	127,118	41,123	168,241	42,060	22,389	6,049	28,438	7,110	196,679
June 2013	149,357	54,963	204,320	40,864	25,649	8,168	33,817	6,763	238,137
May 2013	131,026	42,211	173,237	43,309	23,723	5,228	28,951	7,238	202,188
April 2013	136,709	45,396	182,105	45,526	23,738	6,313	30,051	7,513	212,156
March 2013	162,105	48,960	211,065	42,213	30,814	9,815	40,629	8,126	251,694
February 2013	115,609	33,933	149,542	37,386	33,082	8,796	41,878	10,470	191,420
January 2013	97,992	33,151	131,143	32,786	35,396	10,182	45,578	11,395	176,721
to date 2014	1,040,926	309,614	1,350,540	43,566	190,345	55,882	246,227	7,943	1,596,767
Total 2013	1,598,992	525,631	2,124,623	40,858	365,846	95,221	461,067	8,867	2,585,690

Grading									
	West	%	East	Weekly Totals		August 2, 2014		Canada 2013	%
				Canada 2014	%	Canada 2014	%		
A - Prime	327	1.0 %	293	2.7 %	620	1.4 %	468	1.1 %	
AAA	15969	49.1 %	5,997	55.3 %	21,966	50.7 %	21,934	50.1 %	
AA	14880	45.8 %	3,750	34.6 %	18,630	43.0 %	18,887	43.1 %	
A	679	2.1 %	279	2.6 %	958	2.2 %	1,343	3.1 %	
B1, 2, 3, 4	649	2.0 %	527	4.9 %	1,176	2.7 %	1,187	2.7 %	
Year-to-date									
	West	%	East	%	Canada 2014	%	Canada 2013	%	
A - Prime	12,095	1.2 %	8,884	2.8 %	20,979	1.6 %	21,974	1.7 %	
AAA	576,705	55.6 %	177,407	56.6 %	754,112	55.9 %	715,743	56.5 %	
AA	419,549	40.5 %	106,094	33.9 %	525,643	38.9 %	482,339	38.1 %	
A	16,523	1.6 %	9,445	3.0 %	25,968	1.9 %	23,905	1.9 %	
B1, 2, 3, 4	11,853	1.1 %	11,486	3.7 %	23,339	1.7 %	23,178	1.8 %	

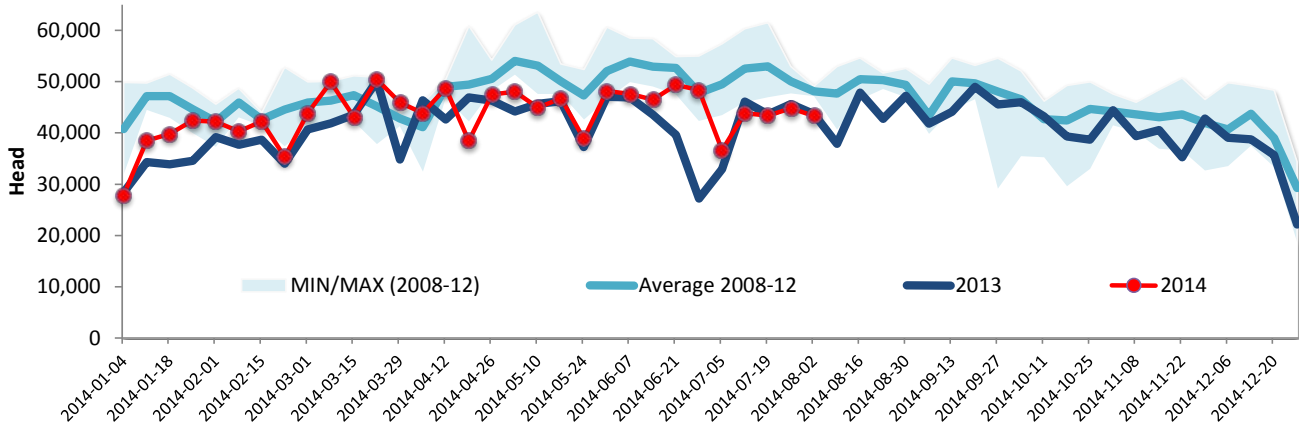
Source : Canadian Beef Grading Agency



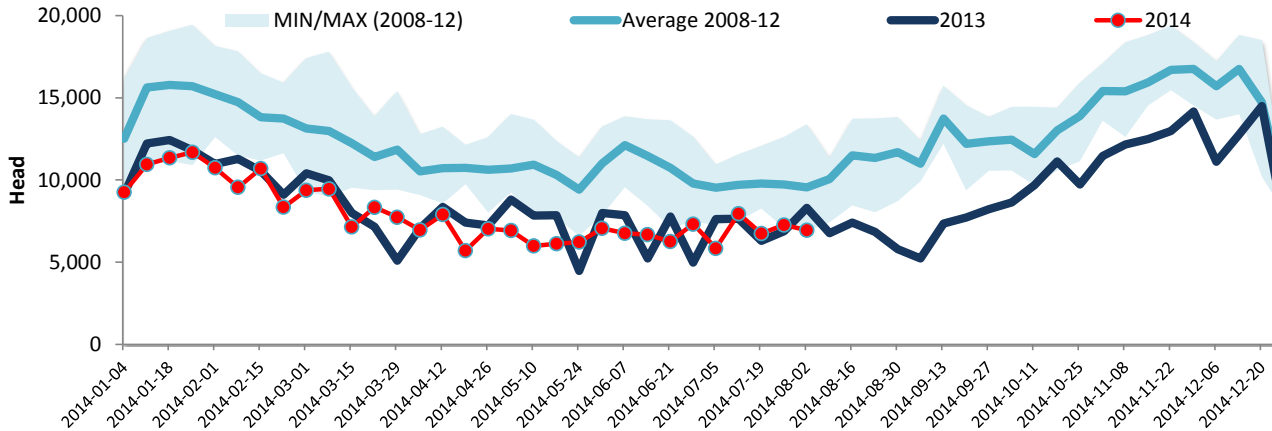
Year To Date for the Week Ending August 2, 2014

Federally Inspected Slaughter

### Canadian Fed Slaughter



### Canadian Non-Fed Slaughter



### Total Cattle Slaughter in Canada

