



# Beef Supply at a Glance - CANADA

Year To Date for the Week Ending April 27, 2013

Federally Inspected Slaughter (head)	West			East			CANADA		
	2013	2012	% chg	2013	2012	% chg	2013	2012	% chg
Steers	291,681	290,343	0 %	114,742	111,500	3 %	406,423	401,843	1 %
Heifers	220,734	270,793	-18 %	46,698	56,790	-18 %	267,432	327,583	-18 %
Cows	122,269	104,947	17 %	34,911	67,146	-48 %	157,180	172,093	-9 %
Bulls	761	4,558	-83 %	195	1,175	-83 %	956	5,733	-83 %
<b>Total</b>	<b>635,445</b>	<b>670,641</b>	<b>-5 %</b>	<b>196,546</b>	<b>236,611</b>	<b>-17 %</b>	<b>831,991</b>	<b>907,252</b>	<b>-8 %</b>
<b>Carcass Weight (lbs)</b>									
Steers	878	878	0 %	911	893	2 %	888	882	1 %
Heifers	830	831	0 %	818	806	1 %	828	827	0 %
Cows	680	704	-3 %	654	629	4 %	674	676	0 %
Bulls	939	1,034	-9 %	921	937	-2 %	935	1,014	-8 %
<b>Beef Output (tonnes)</b>									
Fed	199,684	218,159	-8 %	64,877	66,065	-2 %	264,699	284,244	-7 %
Non-Fed	38,117	35,725	7 %	10,460	19,698	-47 %	48,561	55,522	-13 %
<b>Total</b>	<b>237,801</b>	<b>253,884</b>	<b>-6 %</b>	<b>75,337</b>	<b>85,763</b>	<b>-12 %</b>	<b>313,259</b>	<b>339,766</b>	<b>-8 %</b>

Source: Canadian Beef Grading Agency

<b>EXPORTS</b>				For the period Jan. 1 - April 20, 2013				<b>IMPORTS</b>				For the period Jan. 1 - March 31, 2013					
Live Cattle	2013	2012	% chg	(# of head)	2013	2012	% chg	Live Cattle	pure bred	2013	2012	% chg	From U.S.	non pure bred	2013	2012	% chg
slaughter steers & heifers	142,867	138,824	3 %							789	1,006	-22 %			7,468	12,429	-40 %
feeder cattle & calves	110,805	63,615	74 %														
cows & bulls	119,366	56,548	111 %														
others*	4,304	3,253	32 %														
<b>Total</b>	<b>377,342</b>	<b>262,240</b>	<b>44 %</b>														

Source: USDA - APHIS

Source: Statistics Canada

<b>Beef &amp; Veal Exports to US</b>				For the period Jan. 1 - April 27, 2013			
(Tonnes)	2013	2012	% chg	Beef and Veal	2013	2012	% chg
Jan. 1 - March 31				(tonnes) preliminary			
Fresh/chilled cuts	39,569	55,933	-29 %	United States	54,091	47,748	13 %
Frozen cuts	5,592	3,919	43 %	New Zealand	5,018	9,827	-49 %
Offals	2,938	3,801	-23 %	Australia	4,941	4,390	13 %
Processed	207	278	-26 %	Uruguay	6,389	4,099	56 %
<b>TOTAL</b>	<b>48,305</b>	<b>63,931</b>	<b>-24 %</b>	Others	623	863	-28 %
Exports (Jan. 1 - Dec. 31)		197,378		<b>Total</b>	<b>71,061</b>	<b>66,927</b>	<b>6 %</b>

Source: Statistics Canada

**Non-NAFTA Beef/Veal total** 16,167 18,216 -11 %  
Fresh, chilled & frozen (H.S. 0201, 0202)

Source: CFIA

<b>Beef &amp; Veal Exports</b>				Jan. 1 to March 31			
(Tonnes)	2013	2012	% chg	Beef & Veal Exports	2013	2012	% chg
United States	48,305	63,931	-24 %	('000 \$ CDN)			
Hong Kong	6,067	5,671	7 %	United States	210,639	273,921	-23 %
Mexico	2,734	6,634	-59 %	Hong Kong	37,253	22,282	67 %
Japan	2,016	1,737	16 %	Mexico	15,739	33,363	-53 %
Macao	742	0		Japan	10,369	10,751	-4 %
Saudi Arabia	348	0		Macao	4,252	3	
China	851	47		Saudi Arabia	3,138	0	
South Korea	423	89		China	2,853	178	
Viet Nam	308	118		South Korea	1,828	490	
Suriname	181	139	30 %	Viet Nam	1,715	374	
Cuba	97	187	-48 %	Suriname	946	581	63 %
United Arab Emirates	88	71	23 %	Cuba	911	1,639	-44 %
Egypt	472	507	-7 %	United Arab Emirates	823	398	
United Kingdom	74	0		Egypt	734	889	-17 %
Italy	68	57	20 %	United Kingdom	720	0	
Others	1,888	2,991	-37 %	Italy	594	490	21 %
<b>TOTAL</b>	<b>64,663</b>	<b>82,179</b>	<b>-21 %</b>	Others	4,792	10,075	-52 %

Source: Statistics Canada

Source: Statistics Canada



## Year To Date for the Week Ending April 20, 2013

	Weekly	2013	2012	% chg		Weekly	2013	2012	% chg
<b>Slaughter ('000 head)</b>					<b>Carcass Weight (lbs)</b>				
Steers	295.7	4,611.5	4,648.6	-1 %	Steers	844	862	848	2 %
Heifers	183.6	2,808.3	2,940.4	-4 %	Heifers	782	801	789	1 %
Cows	125.3	1,973.7	1,942.0	2 %	Cows	623	623	618	1 %
Bulls	10.5	153.9	159.2	-3 %	Bulls	877	883	880	0 %
<b>Total</b>	<b>615.1</b>	<b>9,547.4</b>	<b>9,690.2</b>	<b>-1 %</b>					
<b>Total (Jan. To Dec. 2012)</b>			<b>32,336.9</b>						

Source : USDA

<b>Beef Output (tonnes)</b>		2013	2012	% chg
Fed		2,829,045	2,846,358	-1 %
Non-Fed		620,471	609,205	2 %
<b>Total</b>		<b>3,449,516</b>	<b>3,455,564</b>	<b>0 %</b>
<b>Total (Jan. To Dec. 2012)</b>			<b>11,615,011</b>	

<b>National Summary of Beef Graded</b>			
	Mar 2013	2012	2011
Prime	4.7 %	3.6 %	3.6 %
Choice	68.3 %	65.2 %	65.2 %
Select	26.7 %	30.8 %	30.7 %

	For the period	Jan. - Mar.	2013	2012	% chg
<b>U.S. Beef and Veal Imports (carcass weight, ' 000 lbs)</b>					
Canada			132	178	-25 %
Australia			136	145	-6 %
New Zealand			166	129	28 %
Other			156	130	20 %
<b>Total</b>			<b>590</b>	<b>582</b>	<b>1 %</b>

<b>Cattle Slaughter for the Week Ending</b>			
	2013	2012	% chg
Canada	54,298	58,109	-7 %
US	615,100	598,800	3 %
<b>Total Canada &amp; US</b>	<b>669,398</b>	<b>656,909</b>	<b>2 %</b>

<b>U.S. Beef and Veal Exports (carcass weight, ' 000 lbs)</b>				
		2013	2012	% chg
Mexico		74	110	-32 %
Canada		118	90	30 %
Japan		112	88	26 %
Other		254	270	-6 %
<b>Total</b>		<b>557</b>	<b>558</b>	<b>0 %</b>

<b>Cattle Slaughter Year to Date</b>			
	2013	2012	% chg
Canada	778,502	795,968	-2 %
US	9,547,400	9,690,200	-1 %
<b>Total Canada &amp; US</b>	<b>10,325,902</b>	<b>10,486,168</b>	<b>-2 %</b>

<b>US Live Cattle Imports</b>			
	2013	2012	% chg
Mexico - Feeder (Jan 1-April 27, 2013)	379,462	590,425	-36 %
Canada (Jan. 1 - April 20, 2013)	377,342	262,240	44 %

## Canada and United States Beef and Veal Tariff Rate Quota Summary

<b>US Beef and Veal Tariff Rate Quota (TRQ) Summary</b>							
YTD Week Ending April 29, 2013	Quota level	2013		2012		2013 VS 2012	
		Tonnes entered	% filled	Tonnes entered	% filled		
Australia	378,214	53,654	14 %	63,237	17%	-15 %	
New Zealand	213,402	68,001	32 %	53,993	25%	26 %	
Argentina	20,000	0	0 %	0	0%		
Uruguay	20,000	8,076	40 %	5,396	27%	50 %	
Japan	200	24	12 %	0	0%		
Others	64,805	15,105	23 %	16,674	26%	-9 %	
<b>Total TRQ</b>	<b>696,621</b>	<b>144,860</b>	<b>21 %</b>	<b>139,300</b>	<b>20%</b>	<b>4 %</b>	
<b>TRQ (Australia, N. Z.)</b>	<b>591,616</b>	<b>121,655</b>	<b>21 %</b>	<b>117,230</b>	<b>20%</b>	<b>4 %</b>	
Canada	no limit	53,281	n/a	72,946	n/a	-27 %	
Mexico	no limit	29,154	n/a	24,734	n/a	18 %	

<b>Canadian Beef and Veal Import Permits by Country</b>			
YTD Week Ending April 27, 2013	2013	2012	% chg
Global quota (tonnes)	76,409	76,409	0 %
Supp. Quota Authorized	-	-	
<b>Total quota</b>	<b>76,409</b>	<b>76,409</b>	<b>0 %</b>
Permits issued			
New Zealand (29600 mt)	5,191	10,124	-49 %
Australia (35000 mt)	5,362	4,300	25 %
Uruguay	6,573	4,228	55 %
Japan	1	-	
<b>Total</b>	<b>17,127</b>	<b>18,652</b>	<b>-8 %</b>

<b>Canadian Beef and Veal Import Permits by Type of Meat</b>					
YTD April 27, 2013	2013		2012		Total Total (%)
	(tonnes)		(tonnes)		
	Grinding Beef	Cuts	Grinding Beef	Cuts	
Japan	0	1			<b>1</b> <b>0 %</b>
Australia	2,525	2,837			<b>5,362</b> <b>31 %</b>
New Zealand	1,892	3,299			<b>5,191</b> <b>30 %</b>
Uruguay	6,210	363			<b>6,573</b> <b>38 %</b>
<b>Total</b>	<b>10,628</b>	<b>6,499</b>			<b>17,127</b> <b>100 %</b>
	Percentage of Total Imports				
	Grinding Beef		Cuts		
	2013	2012	2013	2012	
Australia	14.7 %	14.8 %	16.6 %	8.3 %	
New Zealand	11.0 %	22.3 %	19.3 %	32.0 %	
Argentina					
Uruguay	36.3 %	20.3 %	2.1 %	2.4 %	
<b>Total</b>	<b>62.1 %</b>	<b>57.3 %</b>	<b>37.9 %</b>	<b>42.7 %</b>	

Sources : Canadian Slaughter and Grading Data, CBGA, US Data: USDA, Canadian TRQ Data: DFAIT



## Beef Supply at a Glance

Year To Date for the Week Ending April 27, 2013

### Weekly Federally Inspected Slaughter

	Fed Slaughter				Non-fed Slaughter				Total Canada
	West	East	Canada	Weekly Avg.	West	East	Canada	Weekly Avg.	
2013-04-27	35,189	11,070	46,259		5,817	1,413	7,230		53,489
2013-04-20	34,969	11,924	46,893		5,901	1,504	7,405		54,298
2013-04-13	31,978	10,607	42,585		6,614	1,751	8,365		50,950
2013-04-06	34,573	11,795	46,368		5,406	1,645	7,051		53,419
2013-03-30	26,439	8,369	34,808		3,478	1,619	5,097		39,905
2013-03-23	39,704	10,457	50,161		5,202	1,949	7,151		57,312
2013-03-16	33,411	10,132	43,543		6,013	1,980	7,993		51,536
2013-03-09	31,856	9,997	41,853		7,923	2,060	9,983		51,836
2013-03-02	30,695	10,005	40,700		8,198	2,207	10,405		51,105
2013-02-23	26,071	7,903	33,974		7,071	2,023	9,094		43,068
2013-02-16	30,036	8,665	38,701		8,454	2,079	10,533		49,234
2013-02-09	27,960	9,746	37,706		9,134	2,138	11,272		48,978
2013-02-02	31,542	7,619	39,161		8,423	2,556	10,979		50,140
January 2013	97,992	33,151	131,143	32,786	35,396	10,182	45,578	11,395	176,721
December 2012	112,442	45,782	158,224	31,645	40,972	11,932	52,904	10,581	211,128
November 2012	110,962	44,226	155,188	38,797	21,653	9,536	31,189	7,797	186,377
October 2012	88,401	44,977	133,378	33,345	14,947	7,324	22,271	5,568	155,649
September 2012	155,560	52,350	207,910	41,582	18,398	8,020	26,418	5,284	234,328
August 2012	145,455	40,151	185,606	46,402	16,472	5,977	22,449	5,612	208,055
July 2012	144,623	39,432	184,055	46,014	20,769	7,061	27,830	6,958	211,885
June 2012	189,338	49,697	239,035	47,807	23,060	10,253	33,313	6,663	272,348
May 2012	151,522	40,598	192,120	48,030	18,765	13,246	32,011	8,003	224,131
April 2012	136,434	38,963	175,397	43,849	21,529	14,214	35,743	8,936	211,140
March 2012	170,035	54,134	224,169	44,834	33,164	19,548	52,712	10,542	276,881
to date 2013	512,415	161,440	673,855	39,639	123,030	35,106	158,136	9,302	831,991
Total 2012	1,659,439	525,503	2,184,942	42,018	284,541	141,670	426,211	8,196	2,611,153

Source : Canadian Beef Grading Agency

Grading								
	Weekly Totals				April 27, 2013			
	West	%	East	%	Canada 2013	%	Canada 2012	%
A - Prime	1,156	3.3 %	185	1.7 %	1,341	2.9 %	785	1.6 %
AAA	23,269	66.4 %	6,431	57.6 %	29,700	64.3 %	29,983	62.1 %
AA	9,886	28.2 %	3,894	34.9 %	13,780	29.8 %	15,884	32.9 %
A	326	0.9 %	287	2.6 %	613	1.3 %	808	1.7 %
B1, 2, 3, 4	411	1.2 %	374	3.3 %	785	1.7 %	803	1.7 %
Year-to-date								
	West	%	East	%	Canada 2013	%	Canada 2012	%
A - Prime	9,320	1.8 %	3,580	2.2 %	12,900	1.9 %	8,896	1.2 %
AAA	316,114	61.7 %	91,905	55.9 %	408,019	60.3 %	418,959	57.2 %
AA	177,456	34.6 %	58,182	35.4 %	235,638	34.8 %	283,025	38.7 %
A	4,705	0.9 %	4,301	2.6 %	9,006	1.3 %	10,345	1.4 %
B1, 2, 3, 4	4,865	0.9 %	6,330	3.9 %	11,195	1.7 %	10,815	1.5 %

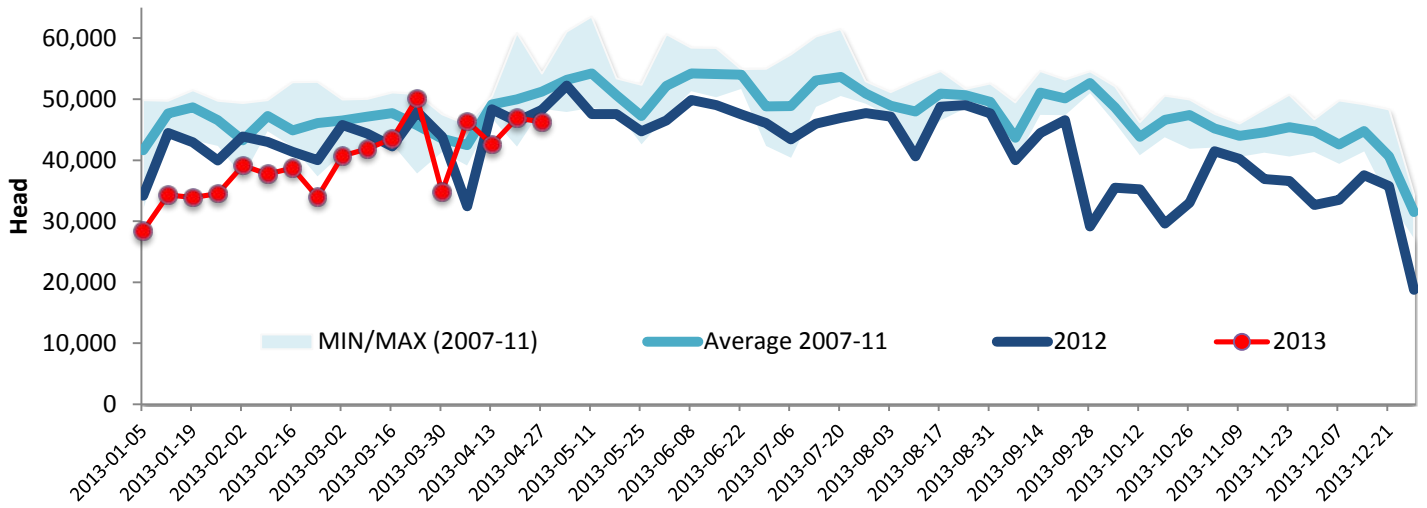
Source : Canadian Beef Grading Agency



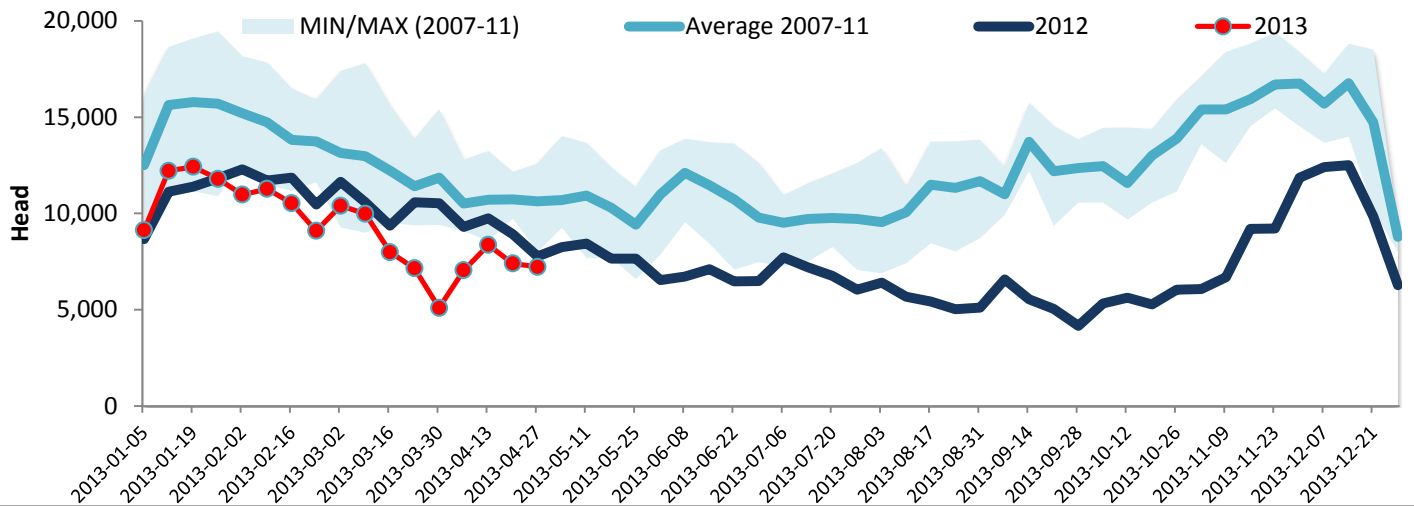
Year To Date for the Week Ending April 27, 2013

Federally Inspected Slaughter

### Canadian Fed Slaughter



### Canadian Non-Fed Slaughter



### Total Cattle Slaughter in Canada

