



# Beef Supply at a Glance - CANADA

Year To Date for the Week Ending April 12, 2014

Federally Inspected Slaughterer (head)	West			East			CANADA		
	2014	2013	% chg	2014	2013	% chg	2014	2013	% chg
Steers	267,680	260,144	3 %	109,961	98,065	12 %	377,641	358,209	5 %
Heifers	214,360	182,113	18 %	42,307	40,381	5 %	256,667	222,494	15 %
Cows	108,473	110,761	-2 %	30,129	32,007	-6 %	138,602	142,768	-3 %
Bulls	752	551	-	107	182	-41 %	859	733	17 %
<b>Total</b>	<b>591,265</b>	<b>553,569</b>	<b>7 %</b>	<b>182,504</b>	<b>170,635</b>	<b>7 %</b>	<b>773,769</b>	<b>724,204</b>	<b>7 %</b>

Carcass Weight (lbs)									
Steers	838	881	-5 %	891	910	-2 %	854	889	-4 %
Heifers	798	829	-4 %	800	818	-2 %	798	827	-4 %
Cows	677	681	-1 %	654	654	0 %	672	675	0 %
Bulls	887	945	-6 %	893	916	-3 %	888	938	-5 %

Beef Output (tonnes)									
Fed	179,716	172,799	4 %	59,919	55,578	8 %	239,693	228,387	5 %
Non-Fed	33,683	34,522	-2 %	9,000	9,591	-6 %	42,683	44,116	-3 %
<b>Total</b>	<b>213,399</b>	<b>207,322</b>	<b>3 %</b>	<b>68,919</b>	<b>65,168</b>	<b>6 %</b>	<b>282,377</b>	<b>272,503</b>	<b>4 %</b>

Source: Canadian Beef Grading Agency

EXPORTS			
For the period Jan. 1 - April 5, 2014			
Live Cattle	2014	2013	% chg
slaughter steers & heifers	121,765	119,045	2 %
feeder cattle & calves	144,839	89,503	62 %
cows & bulls	107,565	104,156	3 %
others*	10,596	3,766	
<b>Total</b>	<b>384,765</b>	<b>316,470</b>	<b>22 %</b>

\*= breeding and others  
Source: USDA - APHIS

Beef & Veal Exports to US			
(Tonnes) Jan. 1 - Feb., 2014			
	2014	2013	% chg
Fresh/chilled cuts	26,777	22,549	19 %
Frozen cuts	1,823	5,005	-64 %
Offals	2,473	1,599	55 %
Processed	258	122	112 %
<b>TOTAL</b>	<b>31,331</b>	<b>29,276</b>	<b>7 %</b>
Exports (Jan. 1 - Dec. 31)		279,289	-100 %

Source: Statistics Canada

Beef & Veal Exports			
(Tonnes) Jan. 1 to Feb. 28			
	2014	2013	% chg
United States	31,331	29,276	7 %
Mexico	3,643	1,004	
Hong Kong	3,372	2,997	12 %
Japan	1,701	1,509	13 %
China	1,425	471	
Egypt	526	331	59 %
Peru	368	200	84 %
Angola	201	260	-23 %
Taiwan	148	92	62 %
Suriname	131	139	-5 %
Saudi Arabia	128	260	-51 %
Cuba	110	72	54 %
Senegal	104	0	
South Korea	98	325	-70 %
Philippines	71	21	
Others	650	1,062	-39 %
<b>TOTAL</b>	<b>44,006</b>	<b>38,018</b>	<b>16 %</b>

Source: Statistics Canada

IMPORTS			
For the period Jan. 1 - Feb. 28, 2014			
(# of head)	2014	2013	% chg
Live Cattle pure bred	331	628	-47 %
From U.S. non pure bred	5,411	5,603	-3 %
<b>Total</b>	<b>5,742</b>	<b>6,231</b>	<b>-8 %</b>

Source: Statistics Canada

Beef and Veal			
(tonnes) preliminary For the period Jan. 1 - April 5, 2014			
	2014	2013	% chg
United States	34,835	46,543	-25 %
Australia	6,576	3,684	79 %
Uruguay	4,493	5,207	-14 %
New Zealand	3,914	4,464	-12 %
Others	615	430	43 %
<b>Total</b>	<b>50,433</b>	<b>60,327</b>	<b>-16 %</b>
<b>Non-NAFTA Beef/Veal total</b>	<b>14,888</b>	<b>13,206</b>	<b>13 %</b>

Fresh, chilled & frozen (H.S. 0201, 0202)  
Source: CFIA

Beef & Veal Exports			
('000 \$ CDN) Jan. 1 to Feb. 28			
	2014	2013	% chg
United States	170,445	122,316	39 %
Mexico	21,952	6,292	
Hong Kong	25,227	17,914	41 %
Japan	8,467	7,517	13 %
China	7,023	1,512	
Egypt	557	572	-3 %
Peru	633	187	
Angola	173	275	-37 %
Taiwan	903	324	
Suriname	562	709	-21 %
Saudi Arabia	980	2,274	-57 %
Cuba	247	654	-62 %
Senegal	74	0	
South Korea	1,087	1,533	-29 %
Philippines	398	42	
Others	3,509	4,493	-22 %
<b>TOTAL</b>	<b>242,236</b>	<b>166,613</b>	<b>45 %</b>

Source: Statistics Canada



# UNITED STATES

Year To Date for the Week Ending April 5, 2014

	Weekly	2014	2013	% chg		Weekly	2014	2013	% chg
<b>Slaughter ('000 head)</b>					<b>Carcass Weight (lbs)</b>				
Steers	297.7	3,948.4	4,018.9	-2 %	Steers	851	864	864	0 %
Heifers	167.6	2,290.7	2,452.3	-7 %	Heifers	790	802	803	0 %
Cows	109.6	1,577.6	1,721.4	-8 %	Cows	631	626	623	0 %
Bulls	11.9	138.0	132.1	4 %	Bulls	905	885	883	0 %
<b>Total</b>	<b>586.8</b>	<b>7,954.7</b>	<b>8,324.8</b>	<b>-4 %</b>					
<b>Total (Jan. To Dec. 2013)</b>			<b>31,796.9</b>						

Source : USDA

<b>Beef Output (tonnes)</b>				<b>National Summary of Beef Graded</b>			
					<b>Feb 2014</b>	<b>2013</b>	<b>2012</b>
Fed	2,385,696	2,473,435	-4 %	Prime	4.3 %	3.9 %	3.6 %
Non-Fed	504,432	540,498	-7 %	Choice	70.9 %	66.5 %	65.2 %
<b>Total</b>	<b>2,890,128</b>	<b>3,013,933</b>	<b>-4 %</b>	Select	24.7 %	29.5 %	30.9 %
<b>Total (Jan. To Dec. 2013)</b>		<b>11,504,554</b>					

<b>Cattle Slaughter for the Week Ending</b>					<b>2014-04-05</b>			
<b>For the period</b>	<b>Jan. - Feb.</b>	<b>2014</b>	<b>2013</b>	<b>% chg</b>		<b>2014</b>	<b>2013</b>	<b>% chg</b>
<b>U.S. Beef and Veal Imports (carcass weight, ' 000 lbs)</b>					Canada	50,793	53,419	-5 %
Canada		86	80	7 %	US	586,813	596,800	-2 %
Australia		87	89	-2 %	<b>Total Canada &amp; US</b>	<b>637,606</b>	<b>650,219</b>	<b>-2 %</b>
New Zealand		92	99	-7 %				
Other		88	106	-18 %				
<b>Total</b>		<b>352</b>	<b>374</b>	<b>-6 %</b>				

<b>U.S. Beef and Veal Exports (carcass weight, ' 000 lbs)</b>					<b>Cattle Slaughter Year to Date</b>			
Mexico	70	54	32 %	Canada	717,173	673,254	7 %	
Canada	61	84	-27 %	US	7,954,730	8,324,772	-4 %	
Japan	84	58	45 %	<b>Total Canada &amp; US</b>	<b>8,671,903</b>	<b>8,998,026</b>	<b>-4 %</b>	
Other	169	174	-3 %					
<b>Total</b>	<b>384</b>	<b>369</b>	<b>4 %</b>					

<b>US Live Cattle Imports</b>				
Mexico - Feeder (Jan 1-April 12, 2014)				316,785
Canada (Jan. 1 - April 5, 2014)				384,765
				333,477
				-5 %
				316,470
				22 %

## Canada and United States Beef and Veal Tariff Rate Quota Summary

### US Beef and Veal Tariff Rate Quota (TRQ) Summary

YTD Week Ending April 14, 2014	2014			2013		
Quota level	Tonnes entered	% filled	Tonnes entered	% filled	2014 VS 2013	
Australia	378,214	50,412	13 %	45,612	12 %	11 %
New Zealand	213,402	51,785	24 %	55,782	26 %	-7 %
Argentina	20,000	0	0 %	0	0 %	
Uruguay	20,000	4,052	20 %	7,387	37 %	-45 %
Japan	200	34	17 %	21	11 %	62 %
Others	64,805	13,679	21 %	13,861	21 %	-1 %
<b>Total TRQ</b>	<b>696,621</b>	<b>119,962</b>	<b>17 %</b>	<b>122,663</b>	<b>18 %</b>	<b>-2 %</b>
<b>TRQ (Australia, N. Z.)</b>	<b>591,616</b>	<b>102,197</b>	<b>17 %</b>	<b>101,394</b>	<b>17 %</b>	<b>1 %</b>
Canada	no limit	49,263	n/a	45,108	n/a	
Mexico	no limit	25,489	n/a	25,226	n/a	

### Canadian Beef and Veal Import Permits by Country

YTD Week Ending April 14, 2014	2014	2013	% chg
Global quota (tonnes)	76,409	76,409	0 %
Supp. Quota Authorized	-	-	
<b>Total quota</b>	<b>76,409</b>	<b>76,409</b>	<b>0 %</b>
Permits issued			
New Zealand (29600 mt)	4,943	4,610	7 %
Australia (35000 mt)	8,805	4,459	97 %
Uruguay	6,413	5,667	13 %
Japan	1	1	-26 %
<b>Total</b>	<b>20,161</b>	<b>14,737</b>	<b>37 %</b>

Over quota tariff rate : 26.5 %

### Canadian Beef and Veal Import Permits by Type of Meat

YTD April 14, 2014	2014 (tonnes)		Total Total (%)	
	Grinding Beef	Cuts	2014	2013
Japan	0	1	1	0 %
Australia	9	8,795	8,805	44 %
New Zealand	0	4,943	4,943	25 %
Uruguay	226	6,187	6,413	32 %
<b>Total</b>	<b>235</b>	<b>19,926</b>	<b>20,161</b>	<b>100 %</b>
Percentage of Total Imports				
	Grinding Beef		Cuts	
	2014	2013	2014	2013
Australia	0.0 %	14.6 %	43.6 %	15.6 %
New Zealand	0.0 %	11.2 %	24.5 %	20.1 %
Uruguay	1.1 %	37.4 %	30.7 %	1.1 %
<b>Total</b>	<b>1.2 %</b>	<b>63.2 %</b>	<b>98.8 %</b>	<b>36.8 %</b>

Sources : Canadian Slaughter and Grading Data, CBGA, US Data: USDA, Canadian TRQ Data: DFAIT



## Beef Supply at a Glance

### Year To Date for the Week Ending April 12, 2014

#### Weekly Federally Inspected Slaughter

	Fed Slaughter				Non-fed Slaughter				Total Canada
	West	East	Canada	Weekly Avg.	West	East	Canada	Weekly Avg.	
2014-04-12	38,161	10,537	48,698		5,964	1,934	7,898		56,596
2014-04-05	33,261	10,578	43,839		5,090	1,864	6,954		50,793
March 2014	178,443	54,749	233,192	46,638	32,677	9,372	42,049	8,410	275,241
February 2014	120,734	39,279	160,013	40,003	31,269	8,067	39,336	9,834	199,349
January 2014	111,441	37,125	148,566	37,142	34,225	8,999	43,224	10,806	191,790
December 2013	129,571	48,817	178,388	35,678	49,111	10,725	59,836	11,967	238,224
November 2013	118,003	41,585	159,588	39,897	39,756	9,317	49,073	12,268	208,661
October 2013	123,755	43,450	167,205	41,801	32,154	7,032	39,186	9,797	206,391
September 2013	174,998	52,658	227,656	45,531	27,352	6,966	34,318	6,864	261,974
August 2013	132,749	39,384	172,133	43,033	22,682	6,630	29,312	7,328	201,445
July 2013	127,118	41,123	168,241	42,060	22,389	6,049	28,438	7,110	196,679
June 2013	149,357	54,963	204,320	40,864	25,649	8,168	33,817	6,763	238,137
May 2013	131,026	42,211	173,237	43,309	23,723	5,228	28,951	7,238	202,188
April 2013	136,709	45,396	182,105	45,526	23,738	6,313	30,051	7,513	212,156
March 2013	162,105	48,960	211,065	42,213	30,814	9,815	40,629	8,126	251,694
February 2013	115,609	33,933	149,542	37,386	33,082	8,796	41,878	10,470	191,420
January 2013	97,992	33,151	131,143	32,786	35,396	10,182	45,578	11,395	176,721
to date 2014	482,040	152,268	634,308	42,287	109,225	30,236	139,461	9,297	773,769
Total 2013	1,598,992	525,631	2,124,623	40,858	365,846	95,221	461,067	8,867	2,585,690

Grading								
	Weekly Totals April 12, 2014							
	West	%	East	%	Canada 2014	%	Canada 2013	%
A - Prime	674	1.8 %	294	2.8 %	968	2.0 %	1,164	2.7 %
AAA	24,124	63.9 %	6,477	61.0 %	30,601	63.3 %	26,752	62.6 %
AA	12,001	31.8 %	3,186	30.0 %	15,187	31.4 %	13,480	31.6 %
A	454	1.2 %	328	3.1 %	782	1.6 %	562	1.3 %
B1, 2, 3, 4	491	1.3 %	327	3.1 %	818	1.7 %	743	1.7 %
Year-to-date								
	West	%	East	%	Canada 2014	%	Canada 2013	%
A - Prime	6,504	1.4 %	4,385	2.8 %	10,889	1.7 %	10,362	1.8 %
AAA	295,280	61.4 %	90,446	58.5 %	385,726	60.7 %	348,713	59.7 %
AA	170,879	35.5 %	50,217	32.5 %	221,096	34.8 %	207,440	35.5 %
A	4,257	0.9 %	4,253	2.7 %	8,510	1.3 %	7,652	1.3 %
B1, 2, 3, 4	3,999	0.8 %	5,381	3.5 %	9,380	1.5 %	9,560	1.6 %

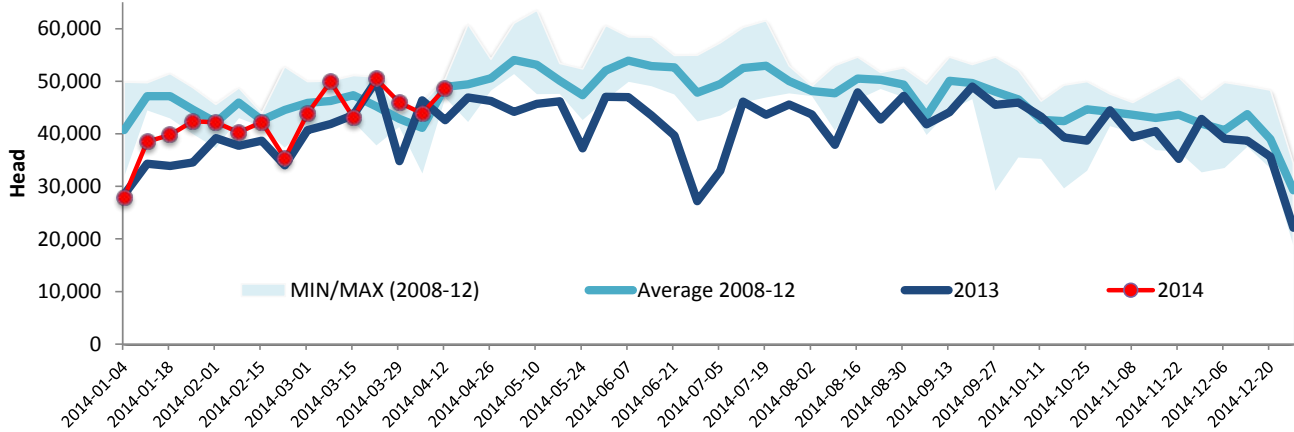
Source : Canadian Beef Grading Agency



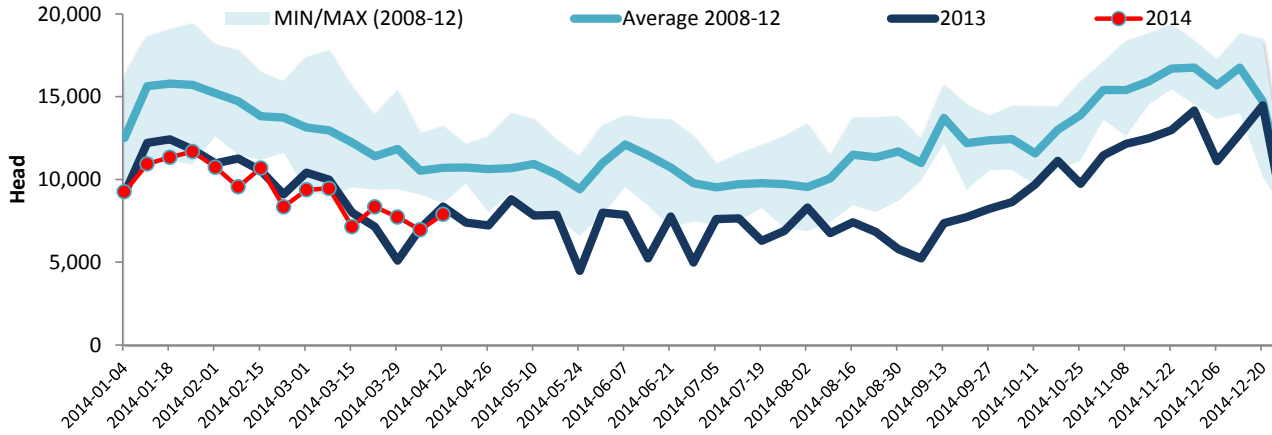
Year To Date for the Week Ending April 12, 2014

Federally Inspected Slaughter

### Canadian Fed Slaughter



### Canadian Non-Fed Slaughter



### Total Cattle Slaughter in Canada

