

# Hog Supply at a Glance

Week ending March 22, 2025



## Hog Slaughter at Federally Inspected Packing Plants

Number of Head

	Week Ending		Chg	YTD Ending		Chg
	22-Mar-25	23-Mar-24		22-Mar-25	23-Mar-24	
West	203,005	178,337	↑ 13.8%	2,174,215	2,128,612	↑ 2.1%
East	242,032	227,222	↑ 6.5%	2,694,277	2,635,499	↑ 2.2%
<b>Canada</b>	<b>445,037</b>	<b>405,559</b>	<b>↑ 9.7%</b>	<b>4,868,492</b>	<b>4,764,111</b>	<b>↑ 2.2%</b>
<b>Carcass weight (kg)*[1]</b>	<b>112.64</b>	<b>111.61</b>	<b>↑ 0.9%</b>	<b>112.58</b>	<b>111.42</b>	<b>↑ 1.0%</b>
<b>Pork Production (t)</b>	<b>50,129</b>	<b>45,264</b>	<b>↑ 10.7%</b>	<b>548,095</b>	<b>530,817</b>	<b>↑ 3.3%</b>

[1] Week ending March 22 2025 (kg)

Source: Canadian Food Inspection Agency (CFIA)

Note: West (BC, AB, SK, MB) and East (ON, QC, NB, NS, PE)

## Hog Prices [1]

CDN\$/100kg

	Week Ending		Chg	YTD Avg Price Ending		Chg
	22-Mar-25	23-Mar-24		22-Mar-25	23-Mar-24	
British Columbia	239.01	209.17	↑ 14.3%	228.47	189.84	↑ 20.3%
Alberta	241.10	213.40	↑ 13.0%	231.82	198.40	↑ 16.8%
Saskatchewan	225.85	201.48	↑ 12.1%	219.20	183.42	↑ 19.5%
Manitoba	238.10	216.81	↑ 9.8%	229.92	200.40	↑ 14.7%
Ontario [1]	263.21	240.45	↑ 9.5%	258.73	230.40	↑ 12.3%
Quebec **	215.77	196.97	↑ 9.5%	217.30	187.81	↑ 15.7%
New Brunswick	231.20	204.23	↑ 13.2%	223.85	181.64	↑ 23.2%
Nova Scotia	243.00	209.41	↑ 16.0%	230.73	186.68	↑ 23.6%
Prince Edward Island	215.77	196.97	↑ 9.5%	217.30	187.81	↑ 15.7%

[1] Provincial prices reflect Index 100, except Ontario which is total value FOB yard price.

\*\*Price formula for Quebec includes reference to USDA wholesale pork cutout price

Source: Provincial Pork Associations, Provincial Governments and the USDA

## Canadian Hog Slaughter by Province of Origin (federal & provincial slaughter)

Number of Head

	Week Ending		Chg	YTD Ending		Chg
	22-Mar-25	23-Mar-24		22-Mar-25	23-Mar-24	
British Columbia	2,823	2,967	↓ -4.9%	35,677	35,581	↑ 0.3%
Alberta	39,089	41,337	↓ -5.4%	455,507	485,814	↓ -6.2%
Saskatchewan	33,242	30,190	↑ 10.1%	390,125	391,739	↓ -0.4%
Manitoba	127,074	106,979	↑ 18.8%	1,289,114	1,265,412	↑ 1.9%
Ontario	121,353	108,888	↑ 11.4%	1,349,120	1,270,983	↑ 6.1%
Quebec	135,609	127,397	↑ 6.4%	1,541,194	1,488,606	↑ 3.5%
New Brunswick	320	1,044	↓ -69.3%	1,572	5,592	↓ -71.9%
Nova Scotia	317	67	-	2,867	1,764	↑ 62.5%
Prince Edward Island	602	1,066	↓ -43.5%	5,829	11,408	↓ -48.9%
<b>Canada</b>	<b>460,429</b>	<b>419,935</b>	<b>↑ 9.6%</b>	<b>5,071,005</b>	<b>4,956,899</b>	<b>↑ 2.3%</b>

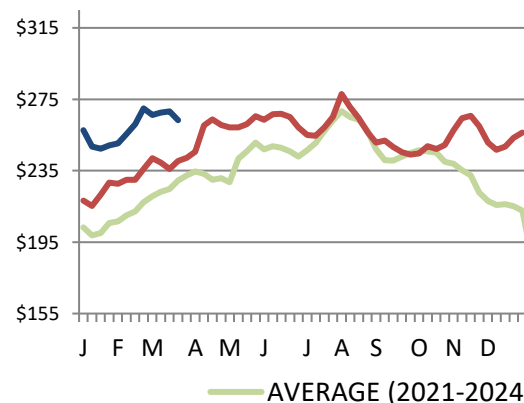
## Estimated Sow/Boar Slaughter (includes federal & provincial slaughter)

West	3,384	2,698	↑ 25.4%	37,015	27,953	↑ 32.4%
East	690	824	↓ -16.3%	8,251	11,362	↓ -27.4%
<b>Canada</b>	<b>4,074</b>	<b>3,522</b>	<b>↑ 15.7%</b>	<b>45,266</b>	<b>39,315</b>	<b>↑ 15.1%</b>

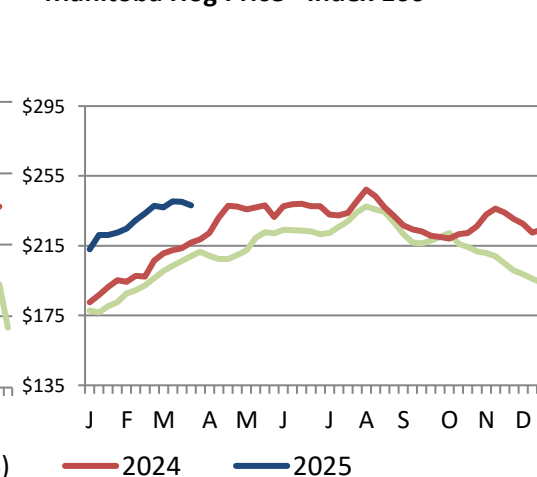
Source: CFIA and Provincial Governments

## Ontario Hog Price - Dressed Weight

(Total Value FOB yard)



## Manitoba Hog Price - Index 100



Weekly Weighted Avg. Price (CDN\$/100kg)

Source: Provincial Pork Associations, Provincial Governments and the USDA

## Exports

### Canadian Pork Exports

Metric tonnes

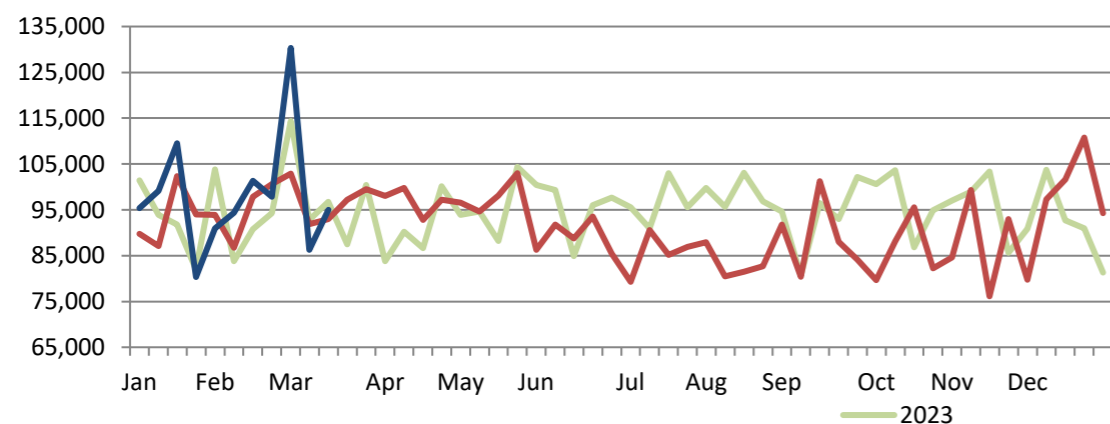
	Monthly		Chg	YTD Ending		Chg
	Jan-25	Jan-24		Jan-25	Jan-24	
United States	34,853	35,933	↓ -3.0%	34,853	35,933	↓ -3.0%
Japan	23,785	28,231	↓ -15.7%	23,785	28,231	↓ -15.7%
China	18,082	14,478	↑ 24.9%	18,082	14,478	↑ 24.9%
Mexico	15,949	14,302	↑ 11.5%	15,949	14,302	↑ 11.5%
South Korea	7,690	8,123	↓ -5.3%	7,690	8,123	↓ -5.3%
Philippines	5,558	7,068	↓ -21.4%	5,558	7,068	↓ -21.4%
Taiwan	5,008	3,595	↑ 39.3%	5,008	3,595	↑ 39.3%
Colombia	1,510	2,442	↓ -38.2%	1,510	2,442	↓ -38.2%
Australia	700	1,781	↓ -60.7%	700	1,781	↓ -60.7%
Honduras	519	315	↑ 64.8%	519	315	↑ 64.8%
EU - 27	30	137	↓ -78.4%	30	137	↓ -78.4%
Other	4,161	5,535	↓ -24.8%	4,161	5,535	↓ -24.8%
<b>Total</b>	<b>117,845</b>	<b>121,940</b>	<b>↓ -3.4%</b>	<b>117,845</b>	<b>121,940</b>	<b>↓ -3.4%</b>

Domestic exports only (excludes re-exports)

Source: Statistics Canada

### Canadian Feeder Hog Exports to the US

	Week Ending		Chg	YTD Ending		Chg
	15-Mar-25	16-Mar-24		15-Mar-25	16-Mar-24	
Number of Head	95,002	92,959	↑ 2.2%	1,080,360	1,039,956	↑ 3.9%



Source: USDA - APHIS

PREPARED BY ANIMAL INDUSTRY DIVISION, MARKET INFORMATION SECTION

### Canadian Pork Exports

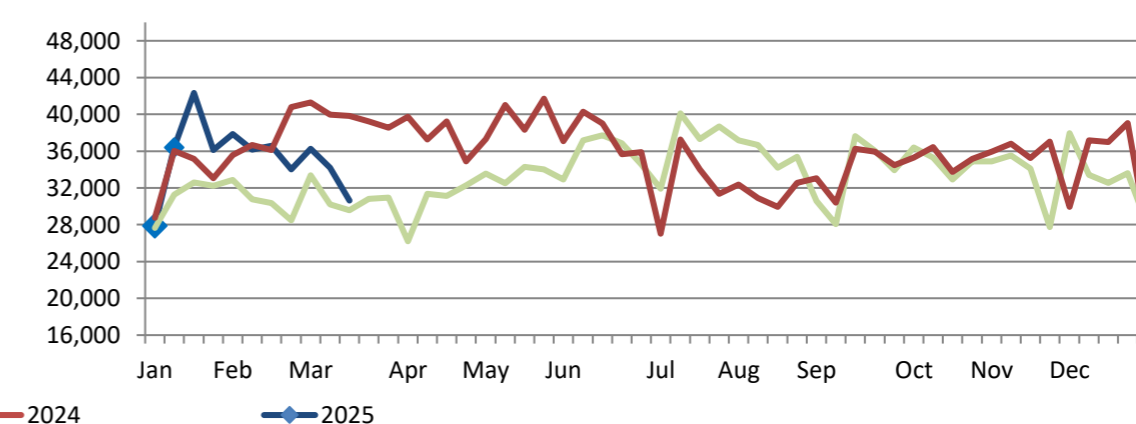
CDN\$ ('000)

	Monthly		Chg	YTD Ending		Chg
	Jan-25	Jan-24		Jan-25	Jan-24	
United States	163,067	146,068	↑ 11.6%	163,067	146,068	↑ 11.6%
Japan	126,538	144,143	↓ -12.2%	126,538	144,143	↓ -12.2%
China	43,073	32,028	↑ 34.5%	43,073	32,028	↑ 34.5%
Mexico	38,326	31,161	↑ 23.0%	38,326	31,161	↑ 23.0%
South Korea	34,486	37,566	↓ -8.2%	34,486	37,566	↓ -8.2%
Philippines	16,914	18,793	↓ -10.0%	16,914	18,793	↓ -10.0%
Taiwan	18,711	11,450	↑ 63.4%	18,711	11,450	↑ 63.4%
Colombia	5,342	7,323	↓ -27.1%	5,342	7,323	↓ -27.1%
Australia	2,325	5,476	↓ -57.5%	2,325	5,476	↓ -57.5%
Honduras	1,486	784	↑ 89.4%	1,486	784	↑ 89.4%
EU - 27	203	406	↓ -50.0%	203	406	↓ -50.0%
Other	13,344	17,754	↓ -24.8%	13,344	17,754	↓ -24.8%
<b>Total</b>	<b>463,813</b>	<b>452,952</b>	<b>↑ 2.4%</b>	<b>463,813</b>	<b>452,952</b>	<b>↑ 2.4%</b>

Domestic exports only (excludes re-exports)

### Canadian Market Hogs/Sows/Boars Exports to the US

	Week Ending		Chg	YTD Ending		Chg
	15-Mar-25	16-Mar-24		15-Mar-25	16-Mar-24	
Number of Head	30,619	39,821	↓ -23.1%	388,483	403,208	↓ -3.7%



## Imports

Metric tonnes

	Week Ending		Chg	YTD Ending		Chg
	22-Mar-25	23-Mar-24		22-Mar-25	23-Mar-24	
<b>**Fresh and Frozen Pork</b>						
United States	2,012	2,531	↓ -20.5%	28,739	32,400	↓ -11.3%
Brazil	8	150	↓ -94.5%	1,574	2,484	↓ -36.6%
Germany	0	125	-	1,374	1,600	↓ -14.1%
Denmark	25	147	↓ -83.0%	1,307	1,312	↓ -0.3%
Spain	0	0	-	305	178	↑ 71.6%
Other	0	98	-	898	959	↓ -6.3%
<b>Total Fresh and Frozen</b>	<b>2,045</b>	<b>3,051</b>	<b>↓ -33.0%</b>	<b>34,198</b>	<b>38,932</b>	<b>↓ -12.2%</b>

Source: CFIA

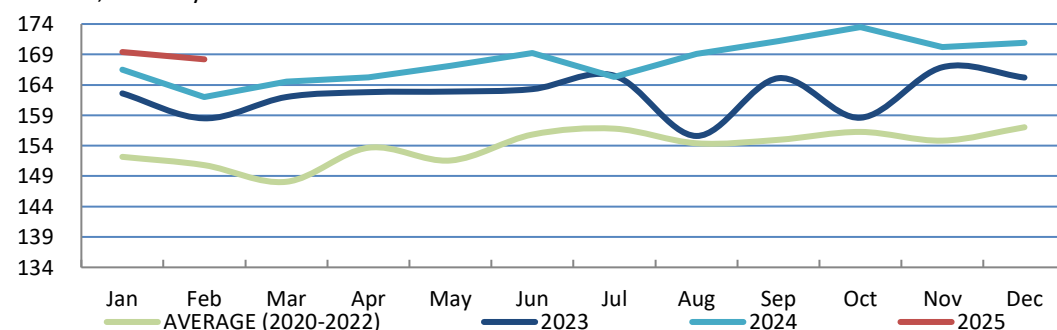
	Week Ending		Chg	YTD Ending		Chg
	22-Mar-25	23-Mar-24		22-Mar-25	23-Mar-24	
<b>**Pork Processed</b>						
United States	1,673	1,327	↑ 26.1%	17,767	18,864	↓ -5.8%
Italy	61	92	↓ -34.1%	1,019	1,089	↓ -6.4%
Denmark	0	0	-	226	231	↓ -2.2%
Other	0	76	-	322	648	↓ -50.2%
<b>Total Processed</b>	<b>1,733</b>	<b>1,495</b>	<b>↑ 15.9%</b>	<b>19,334</b>	<b>20,832</b>	<b>↓ -7.2%</b>
<b>Total Pork Fat</b>	<b>0</b>	<b>0</b>	<b>-</b>	<b>221</b>	<b>117</b>	<b>↑ 89.6%</b>
<b>Total</b>	<b>3,778</b>	<b>4,546</b>	<b>↓ -16.9%</b>	<b>53,754</b>	<b>59,881</b>	<b>↓ -10.2%</b>

Source: CFIA

## Market Indicators

### Consumer Price Index - Fresh or Frozen Pork

2002 Base, Monthly



Source: Statistics Canada

### Estimated Average Value of the Pork Carcass Cutout on the US Wholesale Market

(US\$/cwt)

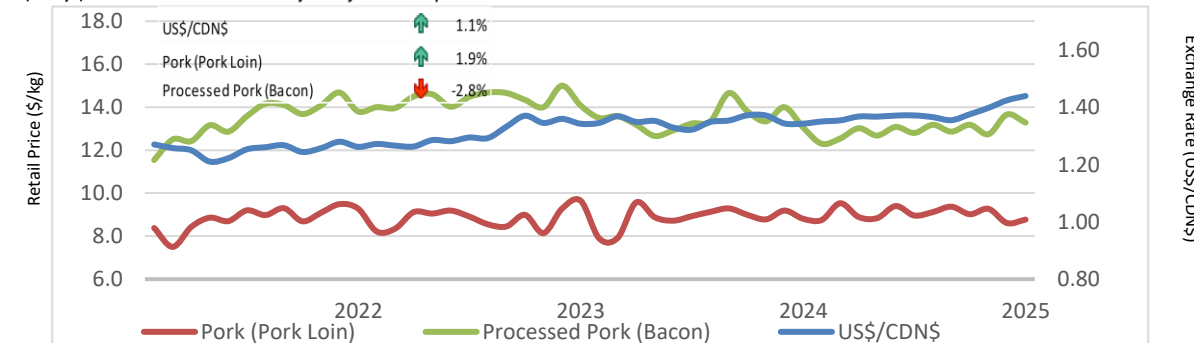
	Week Ending		Chg	YTD Avg Value Ending		Chg
	22-Mar-25	23-Mar-24		22-Mar-25	23-Mar-24	
Carcass	96.24	92.83	↑ 3.7%	94.81	89.21	↑ 6.3%
Loin	88.51	90.02	↓ -1.7%	84.84	85.17	↓ -0.4%
Butt	107.83	113.50	↓ -5.0%	107.41	105.37	↑ 1.9%
Pic	71.79	72.01	↓ -0.3%	68.29	66.66	↑ 2.4%
Rib	148.44	174.92	↓ -15.1%	147.58	143.60	↑ 2.8%
Ham	90.10	75.10	↑ 20.0%	83.70	76.74	↑ 9.1%
Belly	136.71	125.50	↑ 8.9%	144.68	126.14	↑ 14.7%

Source: USDA-APHIS: National Weekly Pork Report

### Exchange Rate and Retail Prices for Pork Products

\$/US\$/CDN\$

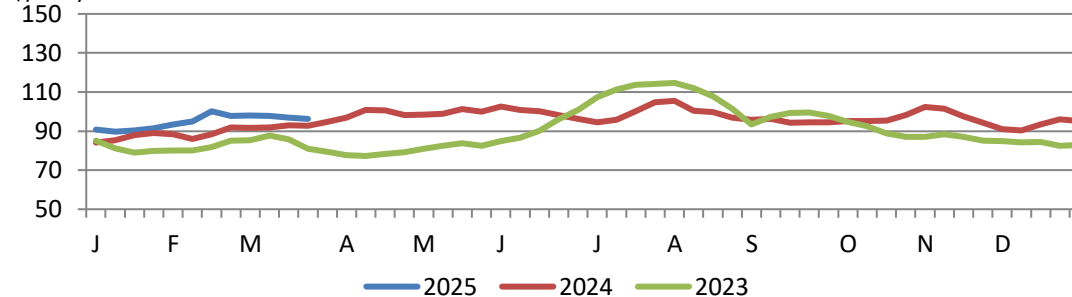
December 2024 - January 2025 comparison



Source: Statistics Canada and Bank of Canada

### Estimated Carcass Value on the US Wholesale Market

(US\$/cwt)



\* Calculations based on a 205 lb Pork Carcass. 53-54% lean, 0.65"-0.80" BF last rib

## United States

### United States Hog Slaughter and Pork Production

	Week Ending		Chg	YTD Ending		Chg
	22-Mar-25	23-Mar-24		22-Mar-25	23-Mar-24	
Slaughter ('000 head)	2,428	2,521	↓ -3.7%	28,976	30,267	↓ -4.3%
Pork Production (mil. lbs)	524	543	↓ -3.5%	6,290	6,550	↓ -4.0%
Avg Dressed Weight (lbs)	216	216	0.0%			

Source: United State Department of Agriculture (USDA)

### United States Hog Market Prices - By Region

Weighted weekly average carcass (US\$/cwt)

	Week Ending		Chg	YTD Ending		Chg
	22-Mar-25	23-Mar-24		22-Mar-25	23-Mar-24	
US - National	86.67	82.38	↑ 5.2%	84.55	76.47	↑ 10.6%
Eastern Cornbelt	87.00	83.25	↑ 4.5%	85.32	78.44	↑ 8.8%
Iowa Minnesota	86.76	81.81	↑ 6.1%	84.57	74.99	↑ 12.8%
Western Cornbelt	86.89	81.91	↑ 6.1%	84.62	74.13	↑ 14.2%

#### Total composite weighted average prices\*

	22-Mar-25	23-Mar-24	Chg	22-Mar-25	23-Mar-24	Chg
Early Weaned Pigs	52.02	51.42	↑ 1.2%	72.64	48.55	↑ 49.6%
40 lb Feeder Pigs	104.53	94.21	↑ 11.0%	106.39	74.21	↑ 43.4%

\*Includes Formula and Cash

Source: USDA: National Direct

### United States Pork Imports

Carcass weight - tonnes

	Monthly		Chg	YTD Ending		Chg
	Jan-25	Jan-24		Jan-25	Jan-24	
Canada	26,665	28,042	↓ -4.9%	26,665	28,042	↓ -4.9%
Brazil	3,629	3,517	↑ 3.2%	3,629	3,517	↑ 3.2%
Mexico	3,496	3,323	↑ 5.2%	3,496	3,323	↑ 5.2%
Denmark	2,172	3,210	↓ -32.3%	2,172	3,210	↓ -32.3%
Italy	1,812	1,431	↑ 26.7%	1,812	1,431	↑ 26.7%
Other	5,081	4,930	↑ 3.1%	5,081	4,930	↑ 3.1%
<b>Total</b>	<b>42,855</b>	<b>44,454</b>	<b>↓ -3.6%</b>	<b>42,855</b>	<b>44,454</b>	<b>↓ -3.6%</b>

Source: USDA, Economic Research Service

### United States Pork Exports

Carcass weight - tonnes

	Monthly		Chg	YTD Ending		Chg
	Jan-25	Jan-24		Jan-25	Jan-24	
Mexico	108,898	106,959	↑ 1.8%	108,898	106,959	↑ 1.8%
Japan	30,863	39,917	↓ -22.7%	30,863	39,917	↓ -22.7%
South Korea	23,529	28,947	↓ -18.7%	23,529	28,947	↓ -18.7%
China	19,028	11,810	↑ 61.1%	19,028	11,810	↑ 61.1%
Canada	17,263	19,125	↓ -9.7%	17,263	19,125	↓ -9.7%
Other	62,064	59,851	↑ 3.7%	62,064	59,851	↑ 3.7%
<b>Total</b>	<b>261,644</b>	<b>266,608</b>	<b>↓ -1.9%</b>	<b>261,644</b>	<b>266,608</b>	<b>↓ -1.9%</b>

Source: USDA, Economic Research Service

### For more information, please contact

Francois Bédard

Sector Specialist - Pork

Animal Industry Division

[Francois.Bedard@agr.gc.ca](mailto:Francois.Bedard@agr.gc.ca)

Tel.: 613-282-4103