

# Hog Supply at a Glance

Week ending March 01, 2025



## Hog Slaughter at Federally Inspected Packing Plants

Number of Head

	Week Ending		Chg	YTD Ending		Chg
	01-Mar-25	02-Mar-24		01-Mar-25	02-Mar-24	
West	169,896	178,139	↓ -4.6%	1,588,136	1,599,901	↓ -0.7%
East	238,836	215,792	↑ 10.7%	1,979,890	1,950,632	↑ 1.5%
<b>Canada</b>	<b>408,732</b>	<b>393,931</b>	<b>↑ 3.8%</b>	<b>3,568,026</b>	<b>3,550,533</b>	<b>↑ 0.5%</b>
Carcass weight (kg)*[1]	115.03	112.50	↑ 2.2%	112.68	111.33	↑ 1.2%
Pork Production (t)	47,016	44,317	↑ 6.1%	402,045	395,281	↑ 1.7%

[1] Week ending march 02 2025 (kg)

Source: Canadian Food Inspection Agency (CFIA)

Note: West (BC, AB, SK, MB) and East (ON, QC, NB, NS, PE)

## Hog Prices [1]

CDN\$/100kg

	Week Ending		Chg	YTD Avg Price Ending		Chg
	01-Mar-25	02-Mar-24		01-Mar-25	02-Mar-24	
British Columbia	238.21	200.84	↑ 18.6%	226.33	183.75	↑ 23.2%
Alberta	239.50	208.90	↑ 14.6%	229.67	193.90	↑ 18.4%
Saskatchewan	225.84	195.19	↑ 15.7%	216.26	178.21	↑ 21.4%
Manitoba	236.90	210.51	↑ 12.5%	226.71	195.78	↑ 15.8%
Ontario [1]	266.11	242.10	↑ 9.9%	256.21	227.66	↑ 12.5%
Quebec **	219.51	193.10	↑ 13.7%	216.11	185.28	↑ 16.6%
New Brunswick	232.22	196.10	↑ 18.4%	220.70	175.15	↑ 26.0%
Nova Scotia	242.00	199.67	↑ 21.2%	226.75	179.75	↑ 26.2%
Prince Edward Island	219.51	193.10	↑ 13.7%	216.11	185.28	↑ 16.6%

[1] Provincial prices reflect Index 100, except Ontario which is total value FOB yard price.

\*\*Price formula for Quebec includes reference to USDA wholesale pork cutout price

Source: Provincial Pork Associations, Provincial Governments and the USDA

## Canadian Hog Slaughter by Province of Origin (federal & provincial slaughter)

Number of Head

	Week Ending		Chg	YTD Ending		Chg
	01-Mar-25	02-Mar-24		01-Mar-25	02-Mar-24	
British Columbia	3,094	2,728	↑ 13.4%	27,330	27,019	↑ 1.2%
Alberta	38,873	39,102	↓ -0.6%	340,310	365,034	↓ -6.8%
Saskatchewan	32,294	32,049	↑ 0.8%	292,560	302,008	↓ -3.1%
Manitoba	98,052	108,162	↓ -9.3%	933,373	946,168	↓ -1.4%
Ontario	114,223	98,697	↑ 15.7%	990,352	947,407	↑ 4.5%
Quebec	139,271	125,620	↑ 10.9%	1,141,935	1,100,883	↑ 3.7%
New Brunswick	522	446	↑ 17.0%	881	2,402	↓ -63.3%
Nova Scotia	156	228	↓ -31.6%	2,073	1,563	↑ 32.6%
Prince Edward Island	409	934	↓ -56.2%	4,401	8,198	↓ -46.3%
<b>Canada</b>	<b>426,894</b>	<b>407,966</b>	<b>↑ 4.6%</b>	<b>3,733,215</b>	<b>3,700,682</b>	<b>↑ 0.9%</b>

## Estimated Sow/Boar Slaughter (includes federal & provincial slaughter)

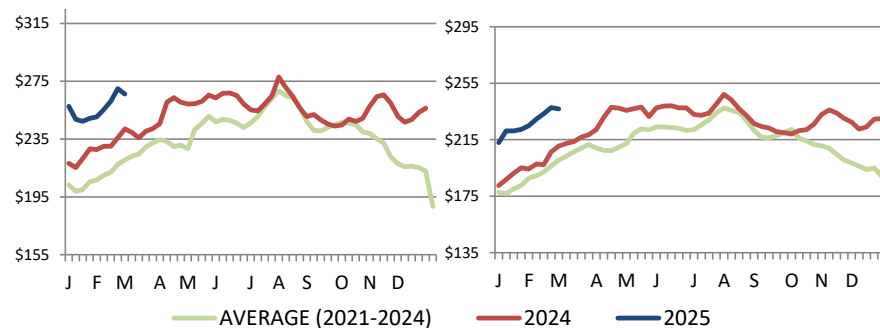
West	3,031	2,276	↑ 33.2%	26,431	20,042	↑ 31.9%
East	643	1,074	↓ -40.1%	6,270	8,611	↓ -27.2%
<b>Canada</b>	<b>3,674</b>	<b>3,350</b>	<b>↑ 9.7%</b>	<b>32,701</b>	<b>28,653</b>	<b>↑ 14.1%</b>

Source: CFIA and Provincial Governments

## Ontario Hog Price - Dressed Weight

(Total Value FOB yard)

## Manitoba Hog Price - Index 100



Weekly Weighted Avg. Price (CDN\$/100kg)

Source: Provincial Pork Associations, Provincial Governments and the USDA

## Exports

### Canadian Pork Exports Metric tonnes

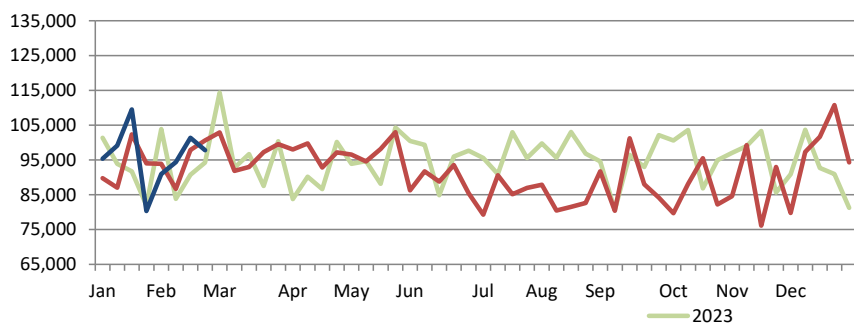
	Monthly		Chg	YTD Ending		Chg
	Jan-25	Jan-24		Jan-25	Jan-24	
	United States	34,853	35,933	↓ -3.0%	34,853	35,933
Japan	23,785	28,231	↓ -15.7%	23,785	28,231	↓ -15.7%
China	18,082	14,478	↑ 24.9%	18,082	14,478	↑ 24.9%
Mexico	15,949	14,302	↑ 11.5%	15,949	14,302	↑ 11.5%
South Korea	7,690	8,123	↓ -5.3%	7,690	8,123	↓ -5.3%
Philippines	5,558	7,068	↓ -21.4%	5,558	7,068	↓ -21.4%
Taiwan	5,008	3,595	↑ 39.3%	5,008	3,595	↑ 39.3%
Colombia	1,510	2,442	↓ -38.2%	1,510	2,442	↓ -38.2%
Australia	700	1,781	↓ -60.7%	700	1,781	↓ -60.7%
Hondouras	519	315	↑ 64.8%	519	315	↑ 64.8%
EU - 27	30	137	↓ -78.4%	30	137	↓ -78.4%
Other	4,161	5,535	↓ -24.8%	4,161	5,535	↓ -24.8%
<b>Total</b>	<b>117,845</b>	<b>121,940</b>	<b>↓ -3.4%</b>	<b>117,845</b>	<b>121,940</b>	<b>↓ -3.4%</b>

Domestic exports only (excludes re-exports)

Source: Statistics Canada

### Canadian Feeder Hog Exports to the US

Number of Head	Week Ending		Chg	YTD Ending		Chg
	22-Feb-25	24-Feb-24		22-Feb-25	24-Feb-24	
		97,811	100,564	↓ -2.7%	768,798	752,243



Source: USDA - APHIS

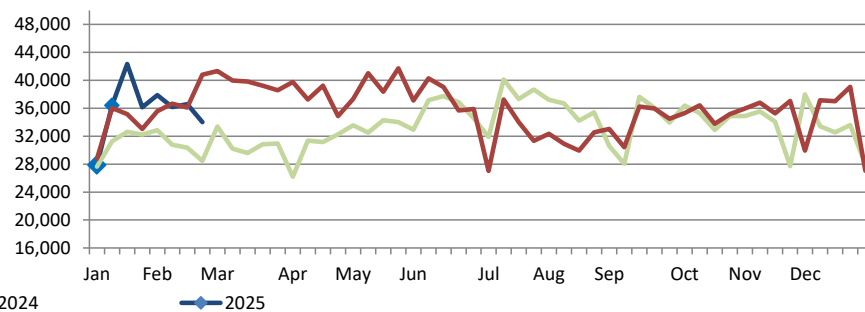
### Canadian Pork Exports CDN\$ ('000)

	Monthly		Chg	YTD Ending		Chg
	Jan-25	Jan-24		Jan-25	Jan-24	
	United States	163,067	146,068	↑ 11.6%	163,067	146,068
Japan	126,538	144,143	↓ -12.2%	126,538	144,143	↓ -12.2%
China	43,073	32,028	↑ 34.5%	43,073	32,028	↑ 34.5%
Mexico	38,326	31,161	↑ 23.0%	38,326	31,161	↑ 23.0%
South Korea	34,486	37,566	↓ -8.2%	34,486	37,566	↓ -8.2%
Philippines	16,914	18,793	↓ -10.0%	16,914	18,793	↓ -10.0%
Taiwan	18,711	11,450	↑ 63.4%	18,711	11,450	↑ 63.4%
Colombia	5,342	7,323	↓ -27.1%	5,342	7,323	↓ -27.1%
Australia	2,325	5,476	↓ -57.5%	2,325	5,476	↓ -57.5%
Hondouras	1,486	784	↑ 89.4%	1,486	784	↑ 89.4%
EU - 27	203	406	↓ -50.0%	203	406	↓ -50.0%
Other	13,344	17,754	↓ -24.8%	13,344	17,754	↓ -24.8%
<b>Total</b>	<b>463,813</b>	<b>452,952</b>	<b>↑ 2.4%</b>	<b>463,813</b>	<b>452,952</b>	<b>↑ 2.4%</b>

Domestic exports only (excludes re-exports)

### Canadian Market Hogs/Sows/Boars Exports to the US

Number of Head	Week Ending		Chg	YTD Ending		Chg
	22-Feb-25	24-Feb-24		22-Feb-25	24-Feb-24	
		34,005	40,787	↓ -16.6%	287,403	282,106



## Imports

Metric tonnes

	Week Ending		Chg	YTD Ending		Chg
	01-Mar-25	02-Mar-24		01-Mar-25	02-Mar-24	
<b>**Fresh and Frozen Pork</b>						
United States	2,985	2,357	↑ 26.7%	23,142	24,913	↓ -7.1%
Brazil	0	306	-	1,259	2,257	↓ -44.2%
Germany	48	99	↓ -51.3%	723	1,133	↓ -36.2%
Denmark	25	122	↓ -79.8%	663	920	↓ -27.9%
Spain	25	57	↓ -55.7%	200	178	↑ 12.6%
Other	0	99	-	525	706	↓ -25.7%
<b>Total Fresh and Frozen</b>	<b>3,083</b>	<b>3,039</b>	<b>↑ 1.4%</b>	<b>26,513</b>	<b>30,106</b>	<b>↓ -11.9%</b>

Source: CFIA

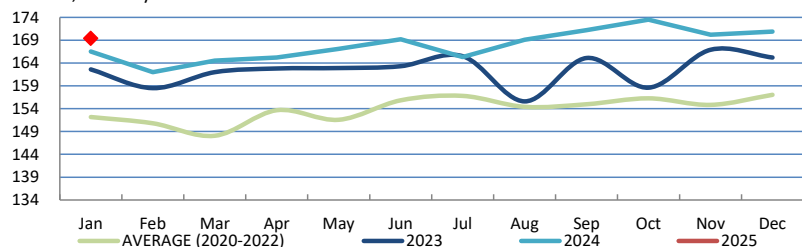
	Week Ending		Chg	YTD Ending		Chg
	01-Mar-25	02-Mar-24		01-Mar-25	02-Mar-24	
<b>**Pork Processed</b>						
United States	2,730	3,094	↓ -11.8%	11,917	13,048	↓ -8.7%
Italy	28	98	↓ -71.0%	597	798	↓ -25.2%
Denmark	0	11	-	84	199	↓ -58.0%
Other	0	76	↓ -100.0%	179	381	↓ -52.9%
<b>Total Processed</b>	<b>2,759</b>	<b>3,279</b>	<b>↓ -15.9%</b>	<b>12,777</b>	<b>14,427</b>	<b>↓ -11.4%</b>
<b>Total Pork Fat</b>	<b>0</b>	<b>9</b>	<b>-</b>	<b>163</b>	<b>117</b>	<b>↑ 39.9%</b>
<b>Total</b>	<b>5,842</b>	<b>6,327</b>	<b>↓ -7.7%</b>	<b>39,453</b>	<b>44,650</b>	<b>↓ -11.6%</b>

Source: CFIA

## Market Indicators

### Consumer Price Index - Fresh or Frozen Pork

2002 Base, Monthly



Source: Statistics Canada

### Estimated Average Value of the Pork Carcass Cutout on the US Wholesale Market

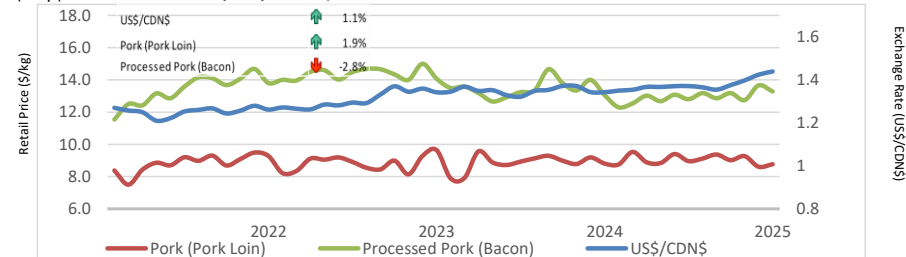
(US\$/cwt)

	Week Ending		Chg	YTD Avg Value Ending		Chg
	01-Mar-25	02-Mar-24		01-Mar-25	02-Mar-24	
Carcass	98.02	91.57	↑ 7.0%	94.08	88.11	↑ 6.8%
Loin	87.64	85.35	↑ 2.7%	83.80	84.22	↓ -0.5%
Butt	109.57	110.11	↓ -0.5%	107.37	102.99	↑ 4.3%
Pic	69.93	66.56	↑ 5.1%	67.16	65.50	↑ 2.5%
Rib	149.85	154.50	↓ -3.0%	147.02	134.18	↑ 9.6%
Ham	83.96	82.82	↑ 1.4%	82.44	76.61	↑ 7.6%
Belly	155.40	125.60	↑ 23.7%	144.48	126.33	↑ 14.4%

Source: USDA-APHIS: National Weekly Pork Report

### Exchange Rate and Retail Prices for Pork Products

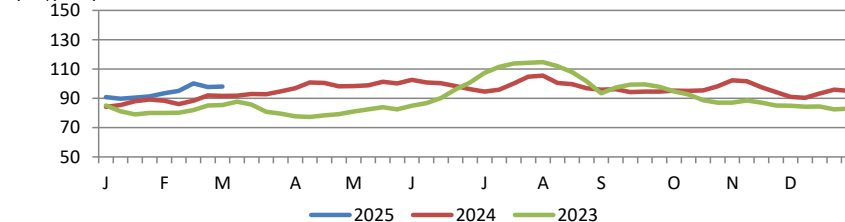
December 2024 - January 2025 comparison



Source: Statistics Canada and Bank of Canada

### Estimated Carcass Value on the US Wholesale Market

(US\$/cwt)



\* Calculations based on a 205 lb Pork Carcass. 53-54% lean, 0.65"-0.80" BF last rib

## United States

### United States Hog Slaughter and Pork Production

	Week Ending		Chg	YTD Ending		Chg
	01-Mar-25	02-Mar-24		01-Mar-25	02-Mar-24	
Slaughter ('000 head)	2,538	2,550	↓ -0.5%	21,672	22,849	↓ -5.2%
Pork Production (mil. lbs)	552	550	↑ 0.3%	4,720	4,953	↓ -4.7%
Avg Dressed Weight (lbs)	218	216	↑ 0.9%			

Source: United State Department of Agriculture (USDA)

### United States Hog Market Prices - By Region

Weighted weekly average carcass (US\$/cwt)

	Week Ending		Chg	YTD Ending		Chg
	01-Mar-25	02-Mar-24		01-Mar-25	02-Mar-24	
US - National	87.52	81.87	↑ 6.9%	83.70	74.46	↑ 12.4%
Eastern Cornbelt	87.63	81.78	↑ 7.2%	84.62	76.39	↑ 10.8%
Iowa Minnesota	88.02	82.03	↑ 7.3%	83.65	73.14	↑ 14.4%
Western Cornbelt	88.06	75.02	↑ 17.4%	83.69	72.12	↑ 16.0%

#### Total composite weighted average prices\*

	01-Mar-25	02-Mar-24	Chg	01-Mar-25	02-Mar-24	Chg
Early Weaned Pigs	70.19	56.85	↑ 23.5%	78.10	46.38	↑ 68.4%
40 lb Feeder Pigs	109.15	85.45	↑ 27.7%	107.06	63.36	↑ 69.0%

\*Includes Formula and Cash

Source: USDA: National Direct

### United States Pork Imports

Carcass weight - tonnes

	Monthly		Chg	YTD Ending		Chg
	Jan-25	Jan-24		Jan-25	Jan-24	
Canada	26,665	28,042	↓ -4.9%	26,665	28,042	↓ -4.9%
Brazil	3,629	3,517	↑ 3.2%	3,629	3,517	↑ 3.2%
Mexico	3,496	3,323	↑ 5.2%	3,496	3,323	↑ 5.2%
Denmark	2,172	3,210	↓ -32.3%	2,172	3,210	↓ -32.3%
Italy	1,812	1,431	↑ 26.7%	1,812	1,431	↑ 26.7%
Other	5,081	4,930	↑ 3.1%	5,081	4,930	↑ 3.1%
<b>Total</b>	<b>42,855</b>	<b>44,454</b>	<b>↓ -3.6%</b>	<b>42,855</b>	<b>44,454</b>	<b>↓ -3.6%</b>

Source: USDA, Economic Research Service

### United States Pork Exports

Carcass weight - tonnes

	Monthly		Chg	YTD Ending		Chg
	Jan-25	Jan-24		Jan-25	Jan-24	
Mexico	108,898	106,959	↑ 1.8%	108,898	106,959	↑ 1.8%
Japan	30,863	39,917	↓ -22.7%	30,863	39,917	↓ -22.7%
South Korea	23,529	28,947	↓ -18.7%	23,529	28,947	↓ -18.7%
China	19,028	11,810	↑ 61.1%	19,028	11,810	↑ 61.1%
Canada	17,263	19,125	↓ -9.7%	17,263	19,125	↓ -9.7%
Other	62,064	59,851	↑ 3.7%	62,064	59,851	↑ 3.7%
<b>Total</b>	<b>261,644</b>	<b>266,608</b>	<b>↓ -1.9%</b>	<b>261,644</b>	<b>266,608</b>	<b>↓ -1.9%</b>

Source: USDA, Economic Research Service

### For more information, please contact

Francois Bédard

Sector Specialist - Pork

Animal Industry Division

[Francois.Bedard@agr.gc.ca](mailto:Francois.Bedard@agr.gc.ca)

Tel.: 613-282-4103