

# Hog Supply at a Glance

Week ending January 18, 2025



## Hog Slaughter at Federally Inspected Packing Plants

Number of Head

	Week Ending		Chg	YTD Ending		Chg
	18-Jan-25	20-Jan-24		18-Jan-25	20-Jan-24	
West	169,321	184,226	↓ -8.1%	517,494	523,816	↓ -1.2%
East	240,889	225,088	↑ 7.0%	607,568	615,666	↓ -1.3%
<b>Canada</b>	<b>410,210</b>	<b>409,314</b>	<b>↑ 0.2%</b>	<b>1,125,062</b>	<b>1,139,482</b>	<b>↓ -1.3%</b>
<b>Carcass weight (kg)*[1]</b>	<b>110.31</b>	<b>111.53</b>	<b>↓ -1.1%</b>	<b>111.23</b>	<b>111.25</b>	<b>↓ 0.0%</b>
<b>Pork Production (t)</b>	<b>45,250</b>	<b>45,651</b>	<b>↓ -0.9%</b>	<b>125,141</b>	<b>126,767</b>	<b>↓ -1.3%</b>

[1] Week ending January 18 2025 (kg)

Source: Canadian Food Inspection Agency (CFIA)

Note: West (BC, AB, SK, MB) and East (ON, QC, NB, NS, PE)

## Hog Prices [1]

CDN\$/100kg

	Week Ending		Chg	YTD Avg Price Ending		Chg
	18-Jan-25	20-Jan-24		18-Jan-25	20-Jan-24	
British Columbia	219.32	177.23	↑ 23.7%	224.31	174.72	↑ 28.4%
Alberta	220.60	187.30	↑ 17.8%	226.13	184.07	↑ 22.9%
Saskatchewan	207.95	170.30	↑ 22.1%	210.39	167.18	↑ 25.8%
Manitoba	221.20	191.27	↑ 15.6%	218.44	186.86	↑ 16.9%
Ontario [1]	247.31	221.52	↑ 11.6%	251.21	218.34	↑ 15.1%
Quebec **	208.33	183.47	↑ 13.5%	211.28	178.92	↑ 18.1%
New Brunswick	211.20	164.45	↑ 28.4%	213.32	160.85	↑ 32.6%
Nova Scotia*	220.00	169.46	↑ 29.8%	222.76	167.07	↑ 33.3%
Prince Edward Island	208.33	183.47	↑ 13.5%	211.28	178.92	↑ 18.1%

[1] Provincial prices reflect Index 100, except Ontario which is total value FOB yard price.

\*Week of December 28 2024 includes an estimate

\*\*Price formula for Quebec includes reference to USDA wholesale pork cutout price

Source: Provincial Pork Associations, Provincial Governments and the USDA

## Canadian Hog Slaughter by Province of Origin (federal & provincial slaughter)

Number of Head

	Week Ending		Chg	YTD Ending		Chg
	18-Jan-25	20-Jan-24		18-Jan-25	20-Jan-24	
British Columbia	2,712	2,802	↓ -3.2%	8,287	8,750	↓ -5.3%
Alberta	38,145	41,251	↓ -7.5%	113,682	120,712	↓ -5.8%
Saskatchewan	32,087	35,545	↓ -9.7%	95,855	101,269	↓ -5.3%
Manitoba	95,642	109,306	↓ -12.5%	300,818	308,156	↓ -2.4%
Ontario	122,309	109,223	↑ 12.0%	320,179	318,199	↑ 0.6%
Quebec	136,910	127,840	↑ 7.1%	338,752	333,329	↑ 1.6%
New Brunswick	1	175	↓ -99.4%	4	540	↓ -99.3%
Nova Scotia*	167	317	↓ -47.3%	501	581	↓ -13.8%
Prince Edward Island	166	951	↓ -82.5%	1,515	1,772	↓ -14.5%
<b>Canada</b>	<b>428,139</b>	<b>427,410</b>	<b>↑ 0.2%</b>	<b>1,179,593</b>	<b>1,193,308</b>	<b>↓ -1.1%</b>

## Estimated Sow/Boar Slaughter (includes federal & provincial slaughter)

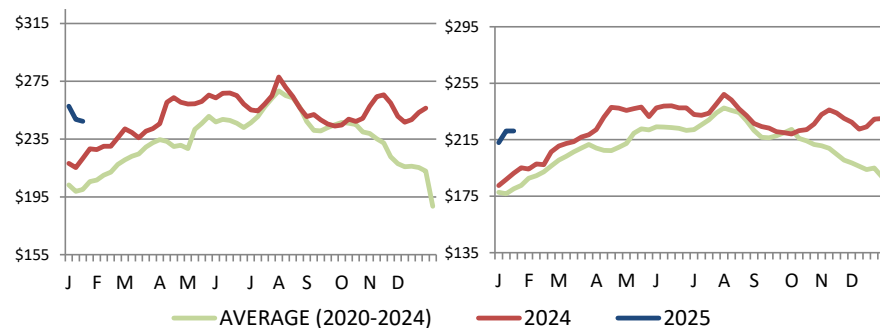
West	2,934	2,246	↑ 30.6%	8,501	5,833	↑ 45.7%
East	893	1,096	↓ -18.5%	2,426	2,759	↓ -12.1%
<b>Canada</b>	<b>3,827</b>	<b>3,342</b>	<b>↑ 14.5%</b>	<b>10,927</b>	<b>8,592</b>	<b>↑ 27.2%</b>

Source: CFIA and Provincial Governments

## Ontario Hog Price - Dressed Weight

(Total Value FOB yard)

## Manitoba Hog Price - Index 100



Weekly Weighted Avg. Price (CDN\$/100kg)

Source: Provincial Pork Associations, Provincial Governments and the USDA

## Exports

### Canadian Pork Exports Metric tonnes

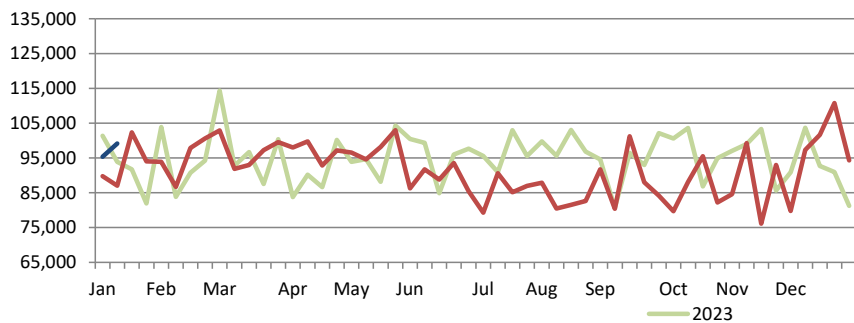
	Monthly		Chg	YTD Ending		Chg
	Nov-24	Nov-23		Nov-24	Nov-23	
	United States	35,320	37,331	↓ -5.4%	378,706	393,300
Japan	23,254	15,650	↑ 48.6%	263,948	167,384	↑ 57.7%
China	16,570	15,984	↑ 3.7%	186,813	218,812	↓ -14.6%
Mexico	19,033	16,326	↑ 16.6%	175,556	156,310	↑ 12.3%
Philippines	3,945	7,104	↓ -44.5%	96,272	101,231	↓ -4.9%
South Korea	5,007	4,415	↑ 13.4%	75,015	46,861	↑ 60.1%
Taiwan	3,524	4,038	↓ -12.7%	37,135	47,073	↓ -21.1%
Colombia	4,855	3,327	↑ 45.9%	24,631	19,938	↑ 23.5%
Malaysia	257	257	↓ -0.1%	11,472	4,115	-
Australia	579	1,189	↓ -51.3%	11,408	7,293	↑ 56.4%
EU - 27	9	161	↓ -94.3%	1,462	2,363	↓ -38.1%
Other	4,285	5,630	↓ -23.9%	62,583	60,017	↑ 4.3%
<b>Total</b>	<b>116,636</b>	<b>111,414</b>	<b>↑ 4.7%</b>	<b>1,325,001</b>	<b>1,224,698</b>	<b>↑ 8.2%</b>

Domestic exports only (excludes re-exports)

Source: Statistics Canada

### Canadian Feeder Hog Exports to the US

	Week Ending		Chg	YTD Ending		Chg
	11-Jan-25	13-Jan-24		11-Jan-25	13-Jan-24	
	Number of Head	99,143	87,059	↑ 13.9%	194,496	176,798



Source: USDA - APHIS

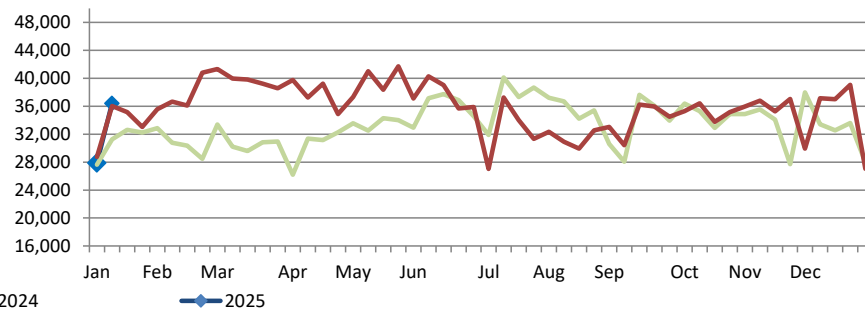
### Canadian Pork Exports CDN\$ ('000)

	Monthly		Chg	YTD Ending		Chg
	Nov-24	Nov-23		Nov-24	Nov-23	
	United States	164,492	157,901	↑ 4.2%	1,648,594	1,652,933
Japan	126,072	79,073	↑ 59.4%	1,382,994	797,023	↑ 73.5%
China	40,427	39,098	↑ 3.4%	428,273	521,984	↓ -18.0%
Mexico	48,872	40,191	↑ 21.6%	427,419	386,863	↑ 10.5%
Philippines	12,013	19,713	↓ -39.1%	260,876	285,189	↓ -8.5%
South Korea	25,239	19,443	↑ 29.8%	358,356	192,676	↑ 86.0%
Taiwan	13,963	12,727	↑ 9.7%	133,905	151,853	↓ -11.8%
Colombia	14,856	10,241	↑ 45.1%	73,912	58,772	↑ 25.8%
Malaysia	793	658	↑ 20.6%	34,192	11,923	-
Australia	1,857	4,424	↓ -58.0%	38,759	24,017	↑ 61.4%
EU - 27	60	659	↓ -90.9%	5,492	8,668	↓ -36.6%
Other	13,744	18,655	↓ -26.3%	199,835	172,862	↑ 15.6%
<b>Total</b>	<b>462,388</b>	<b>402,784</b>	<b>↑ 14.8%</b>	<b>4,992,607</b>	<b>4,264,762</b>	<b>↑ 17.1%</b>

Domestic exports only (excludes re-exports)

### Canadian Market Hogs/Sows/Boars Exports to the US

	Week Ending		Chg	YTD Ending		Chg
	11-Jan-25	13-Jan-24		11-Jan-25	13-Jan-24	
	Number of Head	36,407	36,011	↑ 1.1%	64,287	64,779



## Imports

Metric tonnes

	Week Ending		Chg	YTD Ending		Chg
	18-Jan-25	20-Jan-24		18-Jan-25	20-Jan-24	
<b>**Fresh and Frozen Pork</b>						
United States	2,748	2,836	↓ -3.1%	7,517	8,392	↓ -10.4%
Brazil	0	352	-	175	580	↓ -69.8%
Germany	24	74	↓ -67.5%	99	223	↓ -55.8%
Denmark	0	22	-	71	331	↓ -78.4%
United Kingdom	0	48	-	47	0	-
Other	0	92	-	25	186	↓ -86.6%
<b>Total Fresh and Frozen</b>	<b>2,771</b>	<b>3,423</b>	<b>↓ -19.0%</b>	<b>7,934</b>	<b>9,713</b>	<b>↓ -18.3%</b>

Source: CFIA

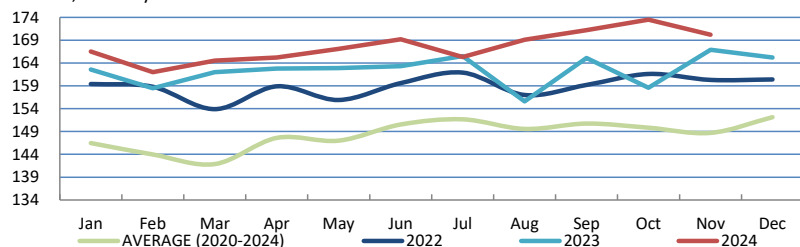
	Week Ending		Chg	YTD Ending		Chg
	18-Jan-25	20-Jan-24		18-Jan-25	20-Jan-24	
<b>**Pork Processed</b>						
United States	1,069	1,240	↓ -13.8%	2,803	3,492	↓ -19.7%
Italy	1	71	↓ -98.2%	138	227	↓ -39.1%
Austria	15	20	↓ -24.0%	31	50	↓ -38.8%
Other	0	43	-	28	94	↓ -70.7%
<b>Total Processed</b>	<b>1,085</b>	<b>1,374</b>	<b>↓ -21.0%</b>	<b>2,999</b>	<b>3,863</b>	<b>↓ -22.4%</b>
<b>Total Pork Fat</b>	<b>0</b>	<b>0</b>	<b>-</b>	<b>163</b>	<b>25</b>	<b>-</b>
<b>Total</b>	<b>3,857</b>	<b>4,797</b>	<b>↓ -19.6%</b>	<b>11,097</b>	<b>13,602</b>	<b>↓ -18.4%</b>

Source: CFIA

## Market Indicators

### Consumer Price Index - Fresh or Frozen Pork

2002 Base, Monthly



Source: Statistics Canada

### Estimated Average Value of the Pork Carcass Cutout on the US Wholesale Market

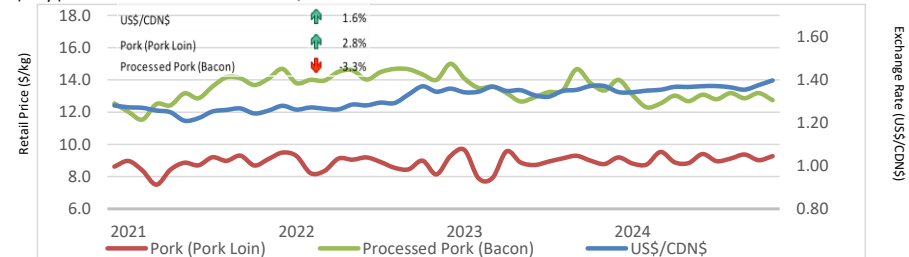
(US\$/cwt)

	Week Ending		Chg	YTD Avg Value Ending		Chg
	18-Jan-25	20-Jan-24		18-Jan-25	20-Jan-24	
Carcass	90.45	88.02	↑ 2.8%	90.35	85.85	↑ 5.2%
Loin	80.33	85.74	↓ -6.3%	80.53	83.18	↓ -3.2%
Butt	107.35	103.79	↑ 3.4%	109.81	102.98	↑ 6.6%
Pic	65.23	65.52	↓ -0.4%	67.50	68.85	↓ -2.0%
Rib	145.30	125.19	↑ 16.1%	141.89	121.48	↑ 16.8%
Ham	82.41	76.04	↑ 8.4%	82.61	77.79	↑ 6.2%
Belly	130.61	126.68	↑ 3.1%	126.56	113.33	↑ 11.7%

Source: USDA-APHIS: National Weekly Pork Report

### Exchange Rate and Retail Prices for Pork Products

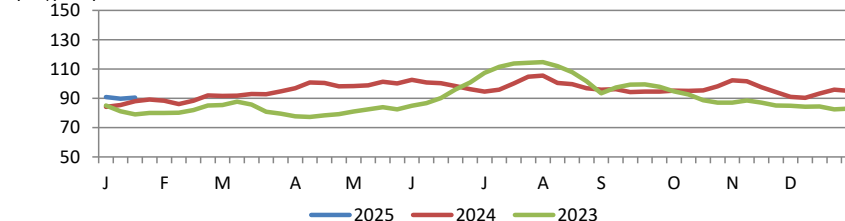
US\$/SCDN



Source: Statistics Canada and Bank of Canada

### Estimated Carcass Value on the US Wholesale Market

(US\$/cwt)



\* Calculations based on a 205 lb Pork Carcass. 53-54% lean, 0.65"-0.80" BF last rib

## United States

### United States Hog Slaughter and Pork Production

	Week Ending		Chg	YTD Ending		Chg
	18-Jan-25	20-Jan-24		18-Jan-25	20-Jan-24	
Slaughter ('000 head)	2,627	2,617	↑ 0.4%	6,541	7,157	↓ -8.6%
Pork Production (mil. lbs)	572	570	↑ 0.3%	1,424	1,560	↓ -8.7%
Avg Dressed Weight (lbs)	218	218	-			

Source: United State Department of Agriculture (USDA)

### United States Hog Market Prices - By Region

Weighted weekly average carcass (US\$/cwt)

	Week Ending		Chg	YTD Ending		Chg
	18-Jan-25	20-Jan-24		18-Jan-25	20-Jan-24	
US - National	81.13	70.57	↑ 15.0%	80.70	69.67	↑ 15.8%
Eastern Cornbelt	83.25	73.47	↑ 13.3%	81.88	71.74	↑ 14.1%
Iowa Minnesota	80.50	69.78	↑ 15.4%	80.48	69.04	↑ 16.6%
Western Cornbelt	80.53	69.63	↑ 15.7%	80.52	68.78	↑ 17.1%

Total composite weighted average prices*						
Early Weaned Pigs	79.13	40.53	↑ 95.2%	80.00	38.53	-
40 lb Feeder Pigs	105.05	48.46	-	99.66	47.58	-

\*Includes Formula and Cash

Source: USDA: National Direct

### United States Pork Imports

Carcass weight - tonnes

	Monthly		Chg	YTD Ending		Chg
	Nov-24	Nov-23		Nov-24	Nov-23	
Canada	27,409	29,825	↓ -8.1%	294,660	312,837	↓ -5.8%
Mexico	3,546	3,912	↓ -9.4%	37,857	39,715	↓ -4.7%
Denmark	2,235	3,183	↓ -29.8%	32,138	27,670	↑ 16.1%
Brazil	2,896	1,845	↑ 57.0%	29,601	20,292	↑ 45.9%
Italy	2,238	1,536	↑ 45.7%	22,656	20,926	↑ 8.3%
Other	4,700	5,676	↓ -17.2%	60,303	54,014	↑ 11.6%
<b>Total</b>	<b>43,024</b>	<b>45,977</b>	<b>↓ -6.4%</b>	<b>477,214</b>	<b>475,454</b>	<b>↑ 0.4%</b>

Source: USDA, Economic Research Service

### United States Pork Exports

Carcass weight - tonnes

	Monthly		Chg	YTD Ending		Chg
	Nov-24	Nov-23		Nov-24	Nov-23	
Mexico	104,184	105,297	↓ -1.1%	1,094,150	1,050,713	↑ 4.1%
Japan	39,306	38,662	↑ 1.7%	444,147	450,469	↓ -1.4%
South Korea	20,535	24,073	↓ -14.7%	274,650	234,511	↑ 17.1%
Canada	24,800	24,503	↑ 1.2%	220,121	232,220	↓ -5.2%
China	22,122	12,391	↑ 78.5%	188,029	216,186	↓ -13.0%
Other	80,946	70,476	↑ 14.9%	713,374	619,159	↑ 15.2%
<b>Total</b>	<b>291,893</b>	<b>275,402</b>	<b>↑ 6.0%</b>	<b>2,934,472</b>	<b>2,803,258</b>	<b>↑ 4.7%</b>

Source: USDA, Economic Research Service

### For more information, please contact

Francois Bédard

Sector Specialist - Pork

Animal Industry Division

[Francois.Bedard@agr.gc.ca](mailto:Francois.Bedard@agr.gc.ca)

Tel.: 613-282-4103