



# Beef Supply at a Glance - CANADA

Year to Date for the Week Ending October 8, 2022

Federally Inspected Slaughter (head)	West			East			CANADA		
	2022	2021	% chg	2022	2021	% chg	2022	2021	% chg
Steers	1,039,568	1,075,068	-3 %	341,387	336,290	2 %	1,380,955	1,411,358	-2 %
Heifers	699,769	656,873	7 %	94,068	104,584	-10 %	793,837	761,457	4 %
Cows	253,359	255,629	-1 %	89,393	84,433	6 %	342,752	340,062	1 %
Bulls	10,635	13,349	-20 %	832	440	89 %	11,467	13,789	-17 %
<b>Total YTD</b>	<b>2,003,331</b>	<b>2,000,919</b>	<b>0 %</b>	<b>525,680</b>	<b>525,747</b>	<b>0 %</b>	<b>2,529,011</b>	<b>2,526,666</b>	<b>0 %</b>
<b>Total Jan. - Dec. 2021</b>		<b>2,578,563</b>			<b>680,316</b>			<b>3,258,879</b>	
<b>Carcass Weight (lbs)</b>									
Steers	914	899	2 %	941	955	-1 %	920	912	1 %
Heifers	841	838	0 %	839	858	-2 %	841	840	0 %
Cows	756	747	1 %	667	672	-1 %	733	729	1 %
Bulls	964	1001	-4 %	964	1,013	-5 %	964	1,001	-4 %

Source: Canadian Beef Grading Agency (CBGA)

Beef Output (tonnes)									
Fed	697,703	687,910	1 %	181,592	186,418	-3 %	879,295	874,328	1 %
Non-Fed	91,536	92,701	-1 %	27,416	25,956	6 %	118,952	118,657	0 %
<b>Total</b>	<b>789,239</b>	<b>780,611</b>	<b>1 %</b>	<b>209,008</b>	<b>212,375</b>	<b>-2 %</b>	<b>998,246</b>	<b>992,985</b>	<b>1 %</b>
<b>Total Jan. - Dec. 2021</b>		<b>1,012,678</b>			<b>272,954</b>			<b>1,285,633</b>	

Imports Live Cattle from U.S. (head)			
For the period Jan. 1 - Aug. 31, 2022			
	2022	2021	% chg
pure bred	9,628	12,277	-22 %
non pure bred	137,755	277,300	-50 %
<b>Total</b>	<b>147,383</b>	<b>289,577</b>	<b>-49 %</b>

Source: Statistics Canada

Exports Live Cattle to U.S. (head)			
For the period Jan. 1 - Oct. 1, 2022			
	2022	2021	% chg
slaughter steers, heifers, cows	359,908	320,302	12 %
feeder cattle & calves	166,344	91,609	82 %
bulls	31,882	28,961	10 %
others	11,146	6,805	64 %
<b>Total</b>	<b>569,280</b>	<b>447,677</b>	<b>27 %</b>

Source: USDA - APHIS

Imports Beef & Veal Imports (tonnes)					
For the period Jan. 1 - Oct. 8, 2022					
	2022	2021	% chg		
United States of America	81,704	77,356	6 %		
New Zealand	8,274	5,571	49 %		
Mexico	7,546	10,145	-26 %		
Australia	5,516	7,093	-22 %		
Uruguay	7,514	7,925	-5 %		
United Kingdom	3,250	2,050	59 %		
Others	13,258	15,354	-14 %		
<b>Total</b>	<b>127,061</b>	<b>125,493</b>	<b>1 %</b>		

Fresh, chilled & frozen (H.S. 0201, 0202)					
Non-CUSMA Beef/Veal total (exc. EU-27)	24,791	26,424	-6 %		
EU-27 (Beef/Veal total)	10,889	11,221	-3 %		

Source: Canadian Food Inspection Agency (CFIA)

Exports Beef & Veal Exports to U.S. (tonnes)									
For the period Jan. 1 - Aug. 31, 2022									
	Fresh Bone-in		Fresh Boneless		Frozen Bone-in		Frozen Boneless		
	2022	2021	2022	2021	2022	2021	2022	2021	% chg
<b>Carcasses and Half-Carcasses</b>	<b>2,396</b>	<b>N/A</b>	<b>0</b>	<b>N/A</b>	<b>2,396</b>	<b>2,396</b>	<b>0 %</b>		
<b>Primal Cuts</b>	<b>18,331</b>	<b>174,331</b>	<b>1,880</b>	<b>15,912</b>	<b>210,454</b>	<b>212,364</b>	<b>-1 %</b>		
Chuck	6,683	37,309	45	508	44,545	42,071	6 %		
Loin	1,240	23,019	0	209	24,468	22,911	7 %		
Brisket	0	13,079	0	19	13,098	12,004	9 %		
Flank and Plate	3,243	9,596	6	1,144	13,989	12,320	14 %		
Hip	115	13,942	0	507	14,564	18,787	-22 %		
Rib	5,133	11,771	411	43	17,358	16,698	4 %		
Others	1,918	65,614	1,418	13,482	82,432	87,574	-6 %		
<b>Offals</b>	<b>N/A</b>	<b>N/A</b>	<b>N/A</b>	<b>N/A</b>	<b>14,072</b>	<b>14,702</b>	<b>-4 %</b>		
<b>Processed</b>	<b>N/A</b>	<b>N/A</b>	<b>N/A</b>	<b>N/A</b>	<b>5,199</b>	<b>4,274</b>	<b>22 %</b>		
<b>Total</b>	<b>20,727</b>	<b>174,331</b>	<b>1,880</b>	<b>15,912</b>	<b>232,121</b>	<b>233,737</b>	<b>-1 %</b>		

Source: Statistics Canada

Beef & Veal Exports Exports to All Countries (tonnes)									
For the period Jan. 1 - Aug. 31, 2022									
	Exports to All Countries (tonnes)			Exports to E.U-27 (tonnes)					
	2022	2021	% chg	2022	2021	% chg	2022	2021	
United States	232,121	233,737	-1 %	2,176,274	2,031,430	7 %	Netherlands	302	168
Japan	48,876	40,038	22 %	392,065	287,161	37 %	Italy	272	223
Mexico	16,976	16,045	6 %	138,160	126,645	9 %	Belgium	86	218
South Korea	14,063	6,878	104 %	150,565	54,611	176 %	Luxembourg	33	5
Viet Nam	10,027	8,904	13 %	85,257	60,192	42 %	Spain	27	37
Hong Kong	3,306	5,653	-42 %	33,110	50,247	-34 %	Germany	25	27
Saudi Arabia	2,083	605	244 %	38,038	7,577	402 %	France	18	40
Philippines	1,778	3,784	-53 %	7,900	10,045	-21 %	Sweden	13	0
Angola	1,336	1,189	12 %	2,375	1,617	47 %	<b>Total</b>	<b>776</b>	<b>718</b>
Others	6,754	20,466	-67 %	43,866	164,601	-73 %	<b>Total ('000 \$ CDN)</b>	<b>14,443</b>	<b>12,057</b>
<b>Total</b>	<b>337,320</b>	<b>337,300</b>	<b>0 %</b>	<b>3,067,609</b>	<b>2,794,124</b>	<b>10 %</b>			
<b>Cattle Hides &amp; Skins Exports (Number '000)</b>	<b>2,454</b>	<b>2,471</b>	<b>-1 %</b>	<b>122,621</b>	<b>137,096</b>	<b>-11 %</b>			

Source: Statistics Canada





## Beef Supply at a Glance - Canadian Federally Inspected

Year to Date for the Week Ending October 8, 2022

	Fed Slaughter (head)				Non-fed Slaughter (head)				Total Canada
	West	East	Canada	Weekly Avg.	West	East	Canada	Weekly Avg.	
2022-10-08	42,330	11,605	53,935		6,904	2,588	9,492		63,427
September 2022	225,911	56,401	282,312	56,462	28,906	10,262	39,168	7,834	321,480
August 2022	176,913	42,970	219,883	54,971	22,466	7,543	30,009	7,502	249,892
July 2022	182,435	42,139	224,574	56,144	26,112	8,715	34,827	8,707	259,401
June 2022	215,454	47,727	265,937	53,187	32,265	10,909	43,174	8,635	309,111
May 2022	173,081	44,704	217,785	54,446	25,544	8,801	34,345	8,586	252,130
April 2022	171,663	44,568	216,231	54,058	26,706	8,155	34,861	8,715	251,092
March 2022	222,239	58,239	280,478	56,096	33,995	12,129	46,124	9,225	326,602
February 2022	168,509	44,014	212,523	53,131	30,256	10,946	41,202	10,301	253,725
January 2022	161,022	42,681	203,703	50,926	31,028	10,176	41,204	10,301	244,907
December 2021	184,021	46,590	230,611	46,122	31,813	13,360	45,173	9,035	275,784
November 2021	175,852	43,946	219,798	54,950	30,244	11,450	41,694	10,424	261,492
October 2021	183,643	42,230	225,873	56,468	26,090	10,559	36,649	9,162	262,522
September 2021	225,970	53,886	279,856	55,971	29,704	12,694	42,398	8,480	322,254
August 2021	192,659	44,128	236,787	59,197	26,675	8,441	35,116	8,779	271,903
July 2021	194,584	43,580	238,164	59,541	26,099	7,901	34,000	8,500	272,164
June 2021	215,996	50,443	266,439	53,288	35,035	10,137	45,172	9,034	311,611
May 2021	160,178	42,771	202,949	50,737	26,214	8,107	34,321	8,580	237,270
April 2021	176,078	47,505	223,583	55,896	23,541	7,882	31,423	7,856	255,006
March 2021	195,001	57,005	252,006	50,401	34,612	10,305	44,917	8,983	296,923
February 2021	160,083	43,893	203,976	50,994	28,997	8,882	37,879	9,470	241,855
January 2021	164,073	46,989	211,062	52,766	31,401	7,632	39,033	9,758	250,095
<b>YTD Total 2022</b>	<b>1,739,557</b>	<b>435,048</b>	<b>2,174,605</b>	<b>54,365</b>	<b>264,182</b>	<b>90,224</b>	<b>354,406</b>	<b>8,860</b>	<b>2,529,011</b>
<b>Total 2021</b>	<b>2,228,138</b>	<b>562,966</b>	<b>2,791,104</b>	<b>53,675</b>	<b>350,425</b>	<b>117,350</b>	<b>467,775</b>	<b>8,996</b>	<b>3,258,879</b>

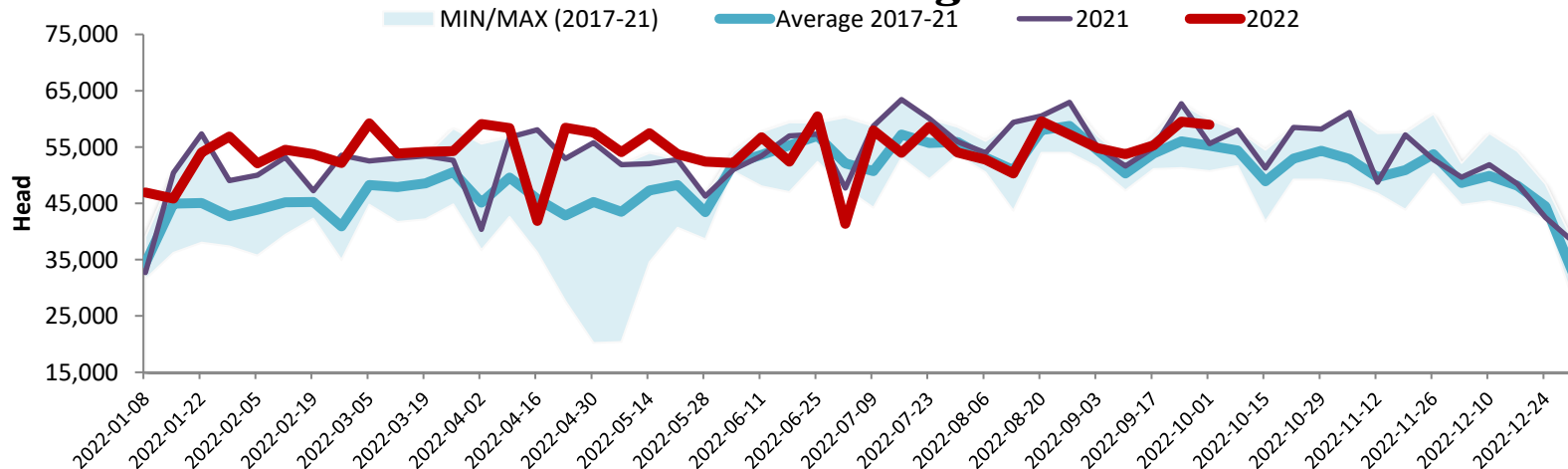
Grading								
	Weekly Totals				October 8, 2022			
	West	% total	East	% total	Canada 2022	% total	Canada 2021	% chg '21 - '22
A - Prime	1,675	4.0 %	384	3.3 %	2,059	3.8 %	2,363	-12.9%
AAA	31,324	74.3 %	8,149	69.7 %	39,473	73.3 %	38,359	2.9%
AA	8,043	19.1 %	2,701	23.1 %	10,744	20.0 %	15,031	-28.5%
A	291	0.7 %	95	0.8 %	386	0.7 %	802	-51.9%
B1, 2, 3, 4	821	1.9 %	367	3.1 %	1,188	2.2 %	1,224	-2.9%
Year-to-date								
	West	% total	East	% total	Canada 2022	% total	Canada 2021	% chg '21 - '22
A - Prime	63,927	3.7 %	22,813	5.2 %	86,740	4.0 %	85,089	1.9 %
AAA	1,195,324	69.7 %	293,742	67.4 %	1,489,066	69.2 %	1,414,213	5.3 %
AA	413,980	24.1 %	105,195	24.1 %	519,175	24.1 %	580,627	-10.6 %
A	17,137	1.0 %	5,819	1.3 %	22,956	1.1 %	36,114	-36.4 %
B1, 2, 3, 4	25,812	1.5 %	8,252	1.9 %	34,064	1.6 %	34,802	-2.1 %

Source: CBGA

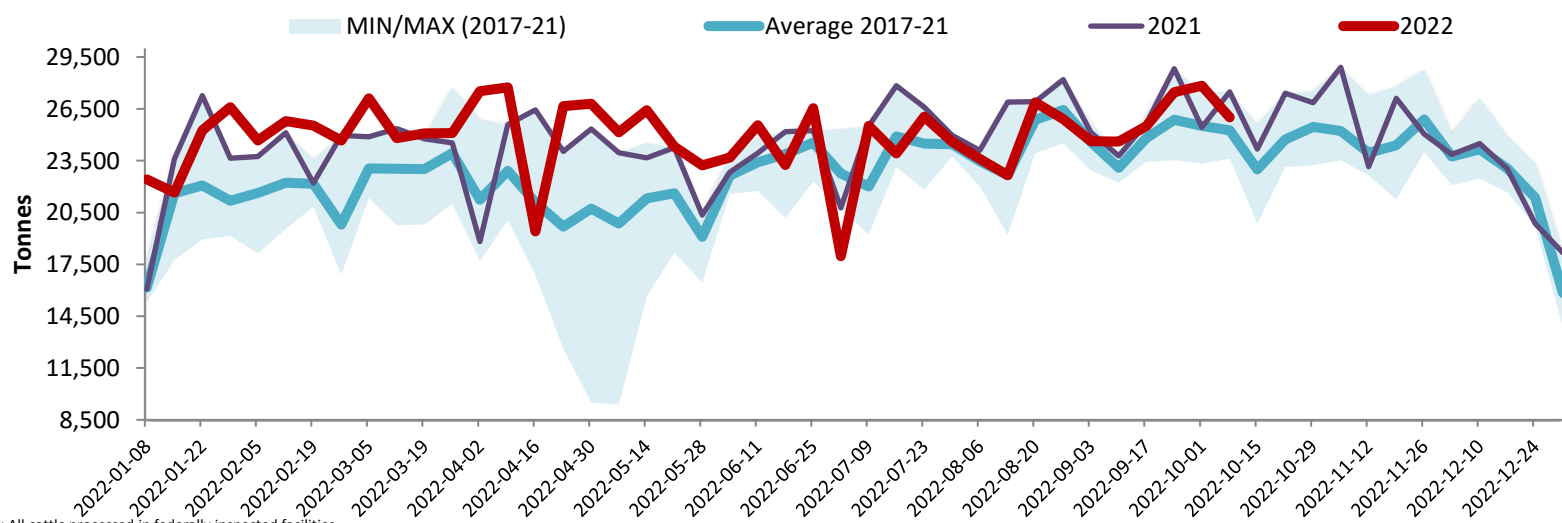
Year to Date for the Week Ending October 8, 2022

Federally Inspected Slaughter

### Canadian Fed Slaughter

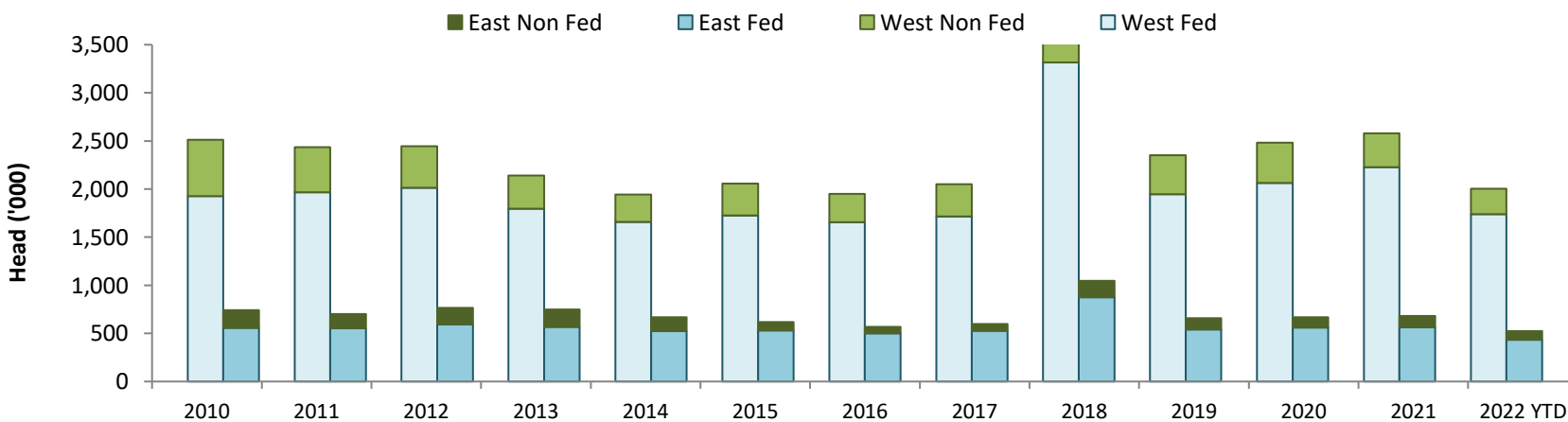


### Canadian Beef Production



Note: All cattle processed in federally inspected facilities  
 Note: Comprend le bétail transformé dans les établissements sous inspection fédérale

### Total Cattle Slaughter in Canada



Source: Canadian Beef Grading Agency (CBGA)