



Beef Supply at a Glance - CANADA

Year To Date for the Week Ending May 25, 2013

Federally Inspected Slaughter (head)	West			East			CANADA		
	2013	2012	% chg	2013	2012	% chg	2013	2012	% chg
Steers	357,961	377,305	-5 %	140,811	136,956	3 %	498,772	514,261	-3 %
Heifers	285,480	335,353	-15 %	62,840	71,932	-13 %	348,320	407,285	-14 %
Cows	145,617	122,661	19 %	40,119	80,057	-50 %	185,736	202,718	-8 %
Bulls	1,136	5,609	-80 %	215	1,510	-86 %	1,351	7,119	-81 %
Total	790,194	840,928	-6 %	243,985	290,455	-16 %	1,034,179	1,131,383	-9 %
Carcass Weight (lbs)									
Steers	874	871	0 %	909	894	2 %	884	877	1 %
Heifers	829	829	0 %	818	804	2 %	827	825	0 %
Cows	680	704	-3 %	654	631	4 %	675	675	0 %
Bulls	938	1,039	-10 %	921	935	-1 %	935	1,017	-8 %
Beef Output (tonnes)									
Fed	249,782	275,746	-9 %	81,546	81,942	0 %	331,352	357,735	-7 %
Non-Fed	45,493	41,900	9 %	12,016	23,604	-49 %	57,561	65,488	-12 %
Total	295,275	317,646	-7 %	93,562	105,545	-11 %	388,914	423,223	-8 %

Source: Canadian Beef Grading Agency

EXPORTS				IMPORTS				
For the period Jan. 1 - May 18, 2013				For the period Jan. 1 - March 31, 2013				
	2013	2012	% chg	(# of head)	2013	2012	% chg	
Live Cattle				Live Cattle	pure bred	789	1,006	-22 %
slaughter steers & heifers	178,246	169,853	5 %	From U.S.	non pure bred	7,468	12,429	-40 %
feeder cattle & calves	140,929	82,557	71 %	Total		8,257	13,435	-39 %
cows & bulls	146,170	70,226	108 %					
others*	5,283	3,871	36 %					
Total	470,628	326,507	44 %					

Source: Statistics Canada

* = breeding and others

Source: USDA - APHIS

Beef & Veal Exports to US			
(Tonnes)	2013	2012	% chg
Jan. 1 - March 31			
Fresh/chilled cuts	39,569	55,933	-29 %
Frozen cuts	5,592	3,919	43 %
Offals	2,938	3,801	-23 %
Processed	207	278	-26 %
TOTAL	48,305	63,931	-24 %
Exports (Jan. 1 - Dec. 31)		197,378	

Source: Statistics Canada

Beef and Veal			
(tonnes) preliminary	2013	2012	% chg
United States	67,397	61,400	10 %
New Zealand	6,197	10,926	-43 %
Australia	6,131	5,293	16 %
Uruguay	7,692	4,773	61 %
Others	762	2,090	-64 %
Total	88,180	84,481	4 %
Non-NAFTA Beef/Veal total	19,808	20,872	-5 %
Fresh, chilled & frozen (H.S. 0201, 0202)			

Source: CFIA

Beef & Veal Exports			
(Tonnes)	2013	2012	% chg
Jan. 1 to March 31			
United States	48,305	63,931	-24 %
Hong Kong	6,067	5,671	7 %
Mexico	2,734	6,634	-59 %
Japan	2,016	1,737	16 %
Macao	742	0	
Saudi Arabia	348	0	
China	851	47	
South Korea	423	89	
Viet Nam	308	118	
Suriname	181	139	30 %
Cuba	97	187	-48 %
United Arab Emirates	88	71	23 %
Egypt	472	507	-7 %
United Kingdom	74	0	
Italy	68	57	20 %
Others	1,888	2,991	-37 %
TOTAL	64,663	82,179	-21 %

Source: Statistics Canada

Beef & Veal Exports			
('000 \$ CDN)	2013	2012	% chg
Jan. 1 to March 31			
United States	210,639	273,921	-23 %
Hong Kong	37,253	22,282	67 %
Mexico	15,739	33,363	-53 %
Japan	10,369	10,751	-4 %
Macao	4,252	3	
Saudi Arabia	3,138	0	
China	2,853	178	
South Korea	1,828	490	
Viet Nam	1,715	374	
Suriname	946	581	63 %
Cuba	911	1,639	-44 %
United Arab Emirates	823	398	
Egypt	734	889	-17 %
United Kingdom	720	0	
Italy	594	490	21 %
Others	4,792	10,075	-52 %
TOTAL	297,307	355,437	-16 %

Source: Statistics Canada

**Year To Date for the Week Ending May 18, 2013**

	Weekly	2013	2012	% chg		Weekly	2013	2012	% chg
Slaughter ('000 head)					Carcass Weight (lbs)				
Steers	332.8	5,893.9	5,961.2	-1 %	Steers	843	858	846	1 %
Heifers	184.6	3,510.2	3,658.1	-4 %	Heifers	770	795	786	1 %
Cows	124.6	2,474.5	2,396.6	3 %	Cows	617	623	617	1 %
Bulls	11.6	199.0	201.7	-1 %	Bulls	883	884	880	0 %
Total	653.6	12,077.6	12,217.6	-1 %					
Total (Jan. To Dec. 2012)			32,336.9						

Source : USDA

Beef Output (tonnes)

Fed	3,566,812	3,599,292	-1 %
Non-Fed	780,115	752,817	4 %
Total	4,346,926	4,352,109	0 %
Total (Jan. To Dec. 2012)		11,615,011	

National Summary of Beef Graded

	Apr 2013	2012	2011
Prime	4.4 %	3.6 %	3.6 %
Choice	67.4 %	65.2 %	65.2 %
Select	27.9 %	30.8 %	30.7 %

Cattle Slaughter for the Week Ending

2013-05-18

For the period	Jan. - Mar.	2013	2012	% chg		2013	2012	% chg
U.S. Beef and Veal Imports (carcass weight, ' 000 lbs)					Canada	54,009	55,245	-2 %
Canada		132	178	-25 %	US	653,600	644,300	1 %
Australia		136	145	-6 %	Total Canada & US	707,609	699,545	1 %
New Zealand		166	129	28 %				
Other		156	130	20 %				
Total		590	582	1 %				

Cattle Slaughter Year to Date

Canada	992,464	1,079,015	-8 %
US	12,077,600	12,217,600	-1 %
Total Canada & US	13,070,064	13,296,615	-2 %

US Live Cattle Imports

Mexico - Feeder (Jan 1-May 25, 2013)	440,816	745,896	-41 %
Canada (Jan. 1 - May 18, 2013)	470,628	326,507	44 %

Canada and United States Beef and Veal Tariff Rate Quota Summary**US Beef and Veal Tariff Rate Quota (TRQ) Summary**

YTD Week Ending May 28, 2013	2013			2012		
Quota level	Tonnes entered	% filled	Tonnes entered	% filled	2013 VS 2012	
Australia	378,214	69,795	18 %	81,831	22%	-15 %
New Zealand	213,402	86,157	40 %	65,719	31%	31 %
Argentina	20,000	0	0 %	0	0%	
Uruguay	20,000	9,796	49 %	6,624	33%	48 %
Japan	200	32	16 %	0	0%	
Others	64,805	17,982	28 %	19,604	30%	-8 %
Total TRQ	696,621	183,762	26 %	173,778	25%	6 %
TRQ (Australia, N. Z.)	591,616	155,952	26 %	147,550	25%	6 %
Canada	no limit	68,798	n/a	85,909	n/a	-20 %
Mexico	no limit	35,861	n/a	29,275	n/a	22 %

Canadian Beef and Veal Import Permits by Country

YTD Week Ending May 27, 2013	2013	2012	% chg
Global quota (tonnes)	76,409	76,409	0 %
Supp. Quota Authorized	-	-	
Total quota	76,409	76,409	0 %
Permits issued			
New Zealand (29600 mt)	6,519	11,275	-42 %
Australia (35000 mt)	6,462	5,139	26 %
Uruguay	7,964	4,993	60 %
Japan	1	0	
Total	20,945	21,407	-2 %

Canadian Beef and Veal Import Permits by Type of Meat

YTD May 27, 2013	2013 (tonnes)		Total Total (%)	
	Grinding Beef	Cuts	2013	2012
Japan	0	1	1	0 %
Australia	3,286	3,175	6,462	31 %
New Zealand	2,653	3,865	6,519	31 %
Uruguay	7,522	442	7,964	38 %
Total	13,462	7,484	20,945	100 %
	Percentage of Total Imports			
	Grinding Beef		Cuts	
	2013	2012	2013	2012
Australia	15.7 %	15.0 %	15.2 %	9.0 %
New Zealand	12.7 %	22.5 %	18.5 %	30.1 %
Argentina				
Uruguay	35.9 %	20.8 %	2.1 %	2.5 %
Total	64.3 %	58.4 %	35.7 %	41.6 %

Sources : Canadian Slaughter and Grading Data, CBGA, US Data: USDA, Canadian TRQ Data: DFAIT



Beef Supply at a Glance

Year To Date for the Week Ending May 25, 2013

Weekly Federally Inspected Slaughter

	Fed Slaughter				Non-fed Slaughter				Total Canada
	West	East	Canada	Weekly Avg.	West	East	Canada	Weekly Avg.	
2013-05-25	28,534	8,715	37,249		3,085	1,381	4,466		41,715
2013-05-18	35,017	11,138	46,155		6,458	1,396	7,854		54,009
2013-05-11	34,367	11,314	45,681		6,652	1,176	7,828		53,509
2013-05-04	33,108	11,044	44,152		7,528	1,275	8,803		52,955
2013-04-27	35,189	11,070	46,259		5,817	1,413	7,230		53,489
2013-04-20	34,969	11,924	46,893		5,901	1,504	7,405		54,298
2013-04-13	31,978	10,607	42,585		6,614	1,751	8,365		50,950
2013-04-06	34,573	11,795	46,368		5,406	1,645	7,051		53,419
2013-03-30	26,439	8,369	34,808		3,478	1,619	5,097		39,905
2013-03-23	39,704	10,457	50,161		5,202	1,949	7,151		57,312
2013-03-16	33,411	10,132	43,543		6,013	1,980	7,993		51,536
2013-03-09	31,856	9,997	41,853		7,923	2,060	9,983		51,836
2013-03-02	30,695	10,005	40,700		8,198	2,207	10,405		51,105
February 2013	115,609	33,933	149,542	37,386	33,082	8,796	41,878	10,470	191,420
January 2013	97,992	33,151	131,143	32,786	35,396	10,182	45,578	11,395	176,721
December 2012	112,442	45,782	158,224	31,645	40,972	11,932	52,904	10,581	211,128
November 2012	110,962	44,226	155,188	38,797	21,653	9,536	31,189	7,797	186,377
October 2012	88,401	44,977	133,378	33,345	14,947	7,324	22,271	5,568	155,649
September 2012	155,560	52,350	207,910	41,582	18,398	8,020	26,418	5,284	234,328
August 2012	145,455	40,151	185,606	46,402	16,472	5,977	22,449	5,612	208,055
July 2012	144,623	39,432	184,055	46,014	20,769	7,061	27,830	6,958	211,885
June 2012	189,338	49,697	239,035	47,807	23,060	10,253	33,313	6,663	272,348
May 2012	151,522	40,598	192,120	48,030	18,765	13,246	32,011	8,003	224,131
April 2012	136,434	38,963	175,397	43,849	21,529	14,214	35,743	8,936	211,140
March 2012	170,035	54,134	224,169	44,834	33,164	19,548	52,712	10,542	276,881
to date 2013	643,441	203,651	847,092	40,338	146,753	40,334	187,087	8,909	1,034,179
Total 2012	1,659,439	525,503	2,184,942	42,018	284,541	141,670	426,211	8,196	2,611,153

Source : Canadian Beef Grading Agency

Grading								
	Weekly Totals				May 25, 2013			
	West	%	East	%	Canada 2013	%	Canada 2012	%
A - Prime	482	1.7 %	145	1.7 %	627	1.7 %	611	1.3 %
AAA	15,893	55.9 %	4,945	56.5 %	20,838	56.0 %	26,126	55.7 %
AA	11,051	38.9 %	3,257	37.2 %	14,308	38.5 %	18,694	39.8 %
A	447	1.6 %	223	2.5 %	670	1.8 %	1,005	2.1 %
B1, 2, 3, 4	560	2.0 %	180	2.1 %	740	2.0 %	492	1.0 %
	Year-to-date				May 25, 2013			
	West	%	East	%	Canada 2013	%	Canada 2012	%
A - Prime	12,783	2.0 %	4,427	2.1 %	17,210	2.0 %	11,505	1.2 %
AAA	394,961	61.4 %	116,094	56.2 %	511,055	60.1 %	530,726	57.4 %
AA	222,297	34.6 %	73,337	35.5 %	295,634	34.8 %	354,456	38.4 %
A	6,440	1.0 %	5,350	2.6 %	11,790	1.4 %	13,921	1.5 %
B1, 2, 3, 4	6,883	1.1 %	7,325	3.5 %	14,208	1.7 %	13,328	1.4 %

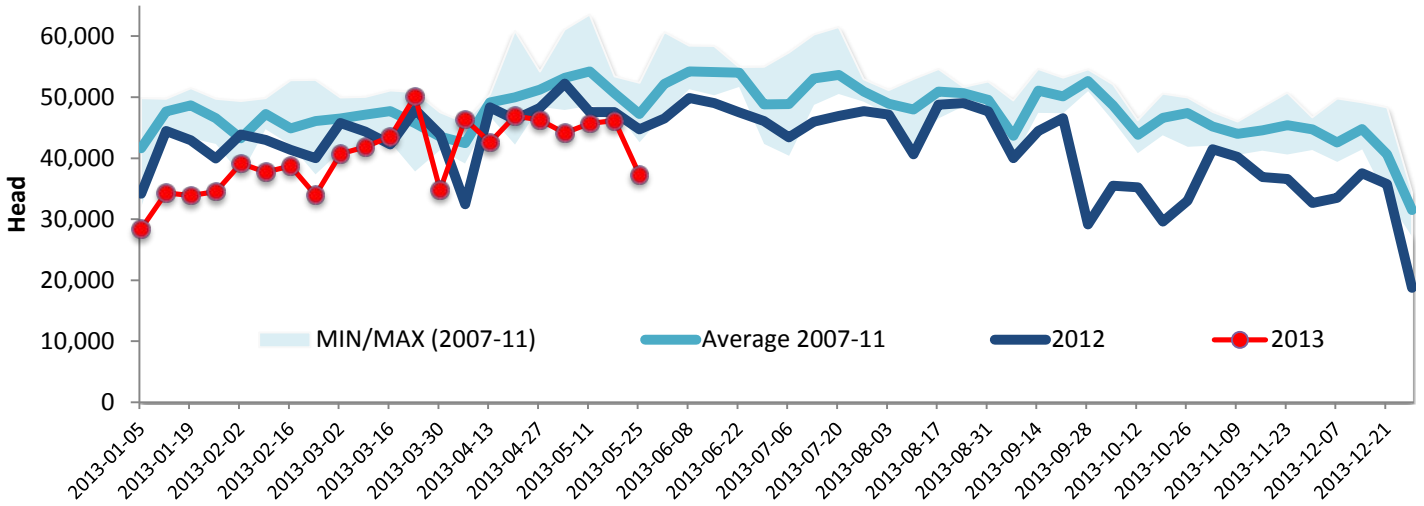
Source : Canadian Beef Grading Agency



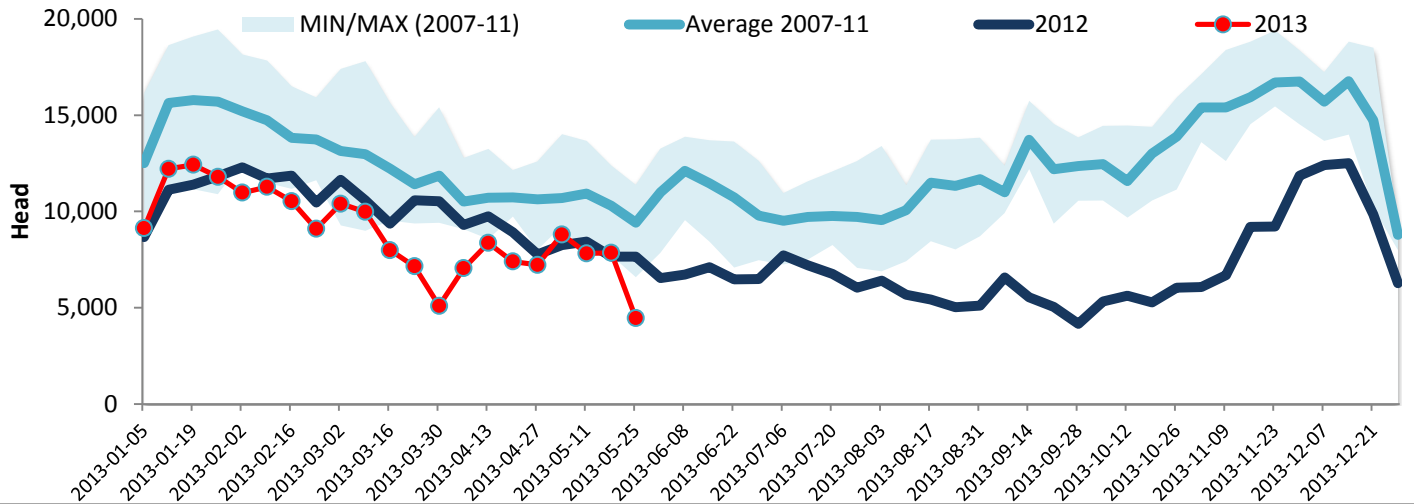
Year To Date for the Week Ending May 25, 2013

Federally Inspected Slaughter

Canadian Fed Slaughter



Canadian Non-Fed Slaughter



Total Cattle Slaughter in Canada

