



Beef Supply at a Glance - CANADA

Year To Date for the Week Ending March 23, 2013

Federally Inspected Slaughter (head)	West			East			CANADA		
	2013	2012	% chg	2013	2012	% chg	2013	2012	% chg
Steers	212,730	211,249	1 %	76,685	79,528	-4 %	289,415	290,777	0 %
Heifers	136,537	180,427	-24 %	30,990	38,960	-20 %	167,527	219,387	-24 %
Cows	95,482	77,976	22 %	27,012	49,621	-46 %	122,494	127,597	-4 %
Bulls	332	3,097	-89 %	162	851	-81 %	494	3,948	-87 %
Total	445,081	472,749	-6 %	134,849	168,960	-20 %	579,930	641,709	-10 %
Carcass Weight (lbs)									
Steers	882	883	0 %	907	887	2 %	889	884	1 %
Heifers	828	832	0 %	817	806	1 %	826	828	0 %
Cows	682	703	-3 %	653	629	4 %	675	675	0 %
Bulls	921	1,029	-10 %	912	934	-2 %	918	1,008	-9 %
Beef Output (tonnes)									
Fed	136,673	153,022	-11 %	43,124	46,338	-7 %	179,849	199,409	-10 %
Non-Fed	29,738	26,365	13 %	8,085	14,548	-44 %	37,790	40,958	-8 %
Total	166,411	179,387	-7 %	51,209	60,886	-16 %	217,638	240,367	-9 %

Source: Canadian Beef Grading Agency

EXPORTS				For the period Jan. 1 - March 16, 2013			
Live Cattle	2013	2012	% chg				
slaughter steers & heifers	83,826	84,361	-1 %				
feeder cattle & calves	65,299	38,601	69 %				
cows & bulls	83,231	40,453	106 %				
others*	3,129	2,026	54 %				
Total	235,485	165,441	42 %				

*= breeding and others

Source: USDA - APHIS

Beef & Veal Exports to US			
(Tonnes) Jan. 1 - 31	2013	2012	% chg
Fresh/chilled cuts	9,621	18,042	-47 %
Frozen cuts	4,176	1,016	311 %
Offals	999	1,335	-25 %
Processed	5	5	0 %
TOTAL	14,801	20,398	-27 %
Exports (Jan. 1 - Dec. 31)		197,378	

Source: Statistics Canada

IMPORTS				For the period Jan. 1 - Jan. 31, 2013			
(# of head)	2013	2012	% chg				
Live Cattle pure bred	316	304	4 %				
From U.S. non pure bred	917	3,615	-75 %				
Total	1,233	3,919	-69 %				

Source: Statistics Canada

Beef and Veal				For the period Jan. 1 - March 23, 2013			
(tonnes) preliminary	2013	2012	% chg				
United States	40,942	33,721	21 %				
New Zealand	3,424	8,164	-58 %				
Australia	2,992	2,916	3 %				
Uruguay	4,453	3,062	45 %				
Others	342	624	-45 %				
Total	52,153	48,487	8 %				
Non-NAFTA Beef/Veal total	10,737	14,073	-24 %				
Fresh, chilled & frozen (H.S. 0201, 0202)							

Source: CFIA

Beef & Veal Exports				Jan. 1 to Jan. 31			
(Tonnes)	2013	2012	% chg				
United States	14,801	20,398	-27 %				
Mexico	401	2,323	-83 %				
Hong Kong	1,249	1,629	-23 %				
Russia	53	593	-91 %				
Japan	968	1,017	-5 %				
China	238	0					
Egypt	119	263	-55 %				
South Korea	177	0					
Columbia	0	0					
Ghana	0	0					
Suriname	59	25					
Ivory Coast	26	51	-48 %				
Cuba	12	75	-84 %				
Philippines	0	24	-98 %				
Taiwan	0	47	-100 %				
Others	699	247					
TOTAL	18,803	26,692	-30 %				

Source: Statistics Canada

Beef & Veal Exports				Jan. 1 to Jan. 31			
('000 \$ CDN)	2013	2012	% chg				
United States	62,788	88,578	-29 %				
Mexico	2,365	11,773	-80 %				
Hong Kong	7,213	6,707	8 %				
Japan	4,818	6,146	-22 %				
Russia	140	1,821	-92 %				
South Korea	960	0					
China	918	0					
Cuba	122	670	-82 %				
Egypt	330	403	-18 %				
Suriname	299	98					
Macedonia	0	0					
France	118	112	5 %				
Taiwan	0	198	-100 %				
Italy	0	150	-100 %				
Switzerland	170	127	34 %				
Others	2,650	1,068					
TOTAL	82,890	117,852	-30 %				

Source: Statistics Canada

26,445

116,784



Year To Date for the Week Ending March 16, 2013

	Weekly	2013	2012	% chg		Weekly	2013	2012	% chg
Slaughter ('000 head)					Carcass Weight (lbs)				
Steers	285.9	3,157.4	3,191.6	-1 %	Steers	856	868	853	2 %
Heifers	187.6	1,915.8	2,014.5	-5 %	Heifers	799	805	794	1 %
Cows	124.0	1,351.9	1,369.7	-1 %	Cows	629	622	616	1 %
Bulls	10.4	101.1	107.9	-6 %	Bulls	879	882	873	1 %
Total	607.9	6,526.2	6,683.7	-2 %					
Total (Jan. To Dec. 2012)			32,336.9						

Source : USDA

Beef Output (tonnes)		2013	2012	% chg
Fed		1,945,855	1,964,522	-1 %
Non-Fed		422,694	426,333	-1 %
Total		2,368,549	2,390,854	-1 %
Total (Jan. To Dec. 2012)			11,615,011	

National Summary of Beef Graded			
	Jan 2013	2012	2011
Prime	3.7 %	3.6 %	3.6 %
Choice	67.4 %	65.2 %	65.2 %
Select	28.6 %	30.8 %	30.7 %

	For the period Jan.	2013	2012	% chg
U.S. Beef and Veal Imports (carcass weight, ' 000 lbs)				
Canada		39	56	-30 %
Australia		56	56	-1 %
New Zealand		49	35	40 %
Other		55	43	29 %
Total		199	190	5 %

Cattle Slaughter for the Week Ending			
	2013	2012	% chg
Canada	51,536	51,615	0 %
US	607,900	617,900	-2 %
Total Canada & US	659,436	669,515	-2 %

U.S. Beef and Veal Exports (carcass weight, ' 000 lbs)		2013	2012	% chg
Mexico		29	38	-25 %
Canada		44	32	38 %
Japan		30	28	7 %
Other		88	84	5 %
Total		192	182	5 %

Cattle Slaughter Year to Date			
Canada	522,618	583,178	-10 %
US	6,526,200	6,683,700	-2 %
Total Canada & US	7,048,818	7,266,878	-3 %

US Live Cattle Imports			
Mexico - Feeder (Jan 1-March 23, 2013)	286,659	414,233	-31 %
Canada (Jan. 1) March 16, 2013)	235,485	165,441	42 %

Canada and United States Beef and Veal Tariff Rate Quota Summary

US Beef and Veal Tariff Rate Quota (TRQ) Summary							
YTD Week Ending March 25, 2013	2013			2012			2013 VS 2012
Quota level	Tonnes entered	% filled	Tonnes entered	% filled			
Australia	378,214	33,368	9 %	33,204	9 %	0 %	
New Zealand	213,402	39,602	19 %	27,554	13 %	44 %	
Argentina	20,000	0	0 %	0	0 %		
Uruguay	20,000	5,724	29 %	2,917	15 %	96 %	
Japan	200	15	8 %	0	0 %		
Others	64,805	10,608	16 %	10,749	17 %	-1 %	
Total TRQ	696,621	89,317	13 %	74,424	11 %	20 %	
TRQ (Australia, New Zealand)	591,616	72,970	12 %	60,758	10 %	20 %	
Canada	no limit	33,745	n/a	47,030	n/a	-28 %	
Mexico	no limit	19,750	n/a	15,726	n/a	26 %	

Canadian Beef and Veal Import Permits by Country			
YTD Week Ending March 25, 2013	2013	2012	% chg
Global quota (tonnes)	76,409	76,409	0 %
Supp. Quota Authorized	-	-	
Total quota	76,409	76,409	0 %
Permits issued			
New Zealand (29600 mt)	3,876	8,331	-53 %
Australia (35000 mt)	3,613	2,864	26 %
Uruguay	4,928	3,370	46 %
Japan	1	-	
Total	12,418	14,565	-15 %
Over quota tariff rate : 26.5 %			

Canadian Beef and Veal Import Permits by Type of Meat					
2013		(tonnes)		Total Total (%)	
	Grinding Beef	Cuts			
Japan	0	1	1	0 %	
Australia	1,976	1,637	3,613	29 %	
New Zealand	1,440	2,436	3,876	31 %	
Uruguay	4,720	208	4,928	40 %	
Total	8,136	4,282	12,418	100 %	
YTD March 25, 2013					
Percentage of Total Imports					
	Grinding Beef	Cuts			
	2013	2012	2013	2012	
Australia	15.9 %	12.4 %	13.2 %	7.2 %	
New Zealand	11.6 %	23.3 %	19.6 %	33.9 %	
Argentina					
Uruguay	38.0 %	20.5 %	1.7 %	2.6 %	
Total	65.5 %	56.2 %	34.5 %	43.8 %	

Sources : Canadian Slaughter and Grading Data, CBGA, US Data: USDA, Canadian TRQ Data: DFAIT



Beef Supply at a Glance

Year To Date for the Week Ending March 23, 2013

Weekly Federally Inspected Slaughter

	Fed Slaughter				Non-fed Slaughter				Total Canada
	West	East	Canada	Weekly Avg.	West	East	Canada	Weekly Avg.	
2013-03-23	39,704	10,457	50,161		5,202	1,949	7,151		57,312
2013-03-16	33,411	10,132	43,543		6,013	1,980	7,993		51,536
2013-03-09	31,856	9,997	41,853		7,923	2,060	9,983		51,836
2013-03-02	30,695	10,005	40,700		8,198	2,207	10,405		51,105
2013-02-23	26,071	7,903	33,974		7,071	2,023	9,094		43,068
2013-02-16	30,036	8,665	38,701		8,454	2,079	10,533		49,234
2013-02-09	27,960	9,746	37,706		9,134	2,138	11,272		48,978
2013-02-02	31,542	7,619	39,161		8,423	2,556	10,979		50,140
2013-01-26	26,655	7,896	34,551		9,168	2,633	11,801		46,352
2013-01-19	24,617	9,278	33,895		9,329	3,092	12,421		46,316
2013-01-12	25,522	8,789	34,311		9,279	2,935	12,214		46,525
2013-01-05	21,198	7,188	28,386		7,620	1,522	9,142		37,528
December 2012	112,442	45,782	158,224	31,645	40,972	11,932	52,904	10,581	211,128
November 2012	110,962	44,226	155,188	38,797	21,653	9,536	31,189	7,797	186,377
October 2012	88,401	44,977	133,378	33,345	14,947	7,324	22,271	5,568	155,649
September 2012	155,560	52,350	207,910	41,582	18,398	8,020	26,418	5,284	234,328
August 2012	145,455	40,151	185,606	46,402	16,472	5,977	22,449	5,612	208,055
July 2012	144,623	39,432	184,055	46,014	20,769	7,061	27,830	6,958	211,885
June 2012	189,338	49,697	239,035	47,807	23,060	10,253	33,313	6,663	272,348
May 2012	151,522	40,598	192,120	48,030	18,765	13,246	32,011	8,003	224,131
April 2012	136,434	38,963	175,397	43,849	21,529	14,214	35,743	8,936	211,140
March 2012	170,035	54,134	224,169	44,834	33,164	19,548	52,712	10,542	276,881
February 2012	131,791	36,498	168,289	42,072	28,607	17,727	46,334	11,584	214,623
January 2012	122,876	38,695	161,571	40,393	26,205	16,832	43,037	10,759	204,608
to date 2013	349,267	107,675	456,942	38,079	95,814	27,174	122,988	10,249	579,930
Total 2012	1,659,439	525,503	2,184,942	42,018	284,541	141,670	426,211	8,196	2,611,153

Source : Canadian Beef Grading Agency

Grading								
	Weekly Totals				March 23, 2013			
	West	%	East	%	Canada 2013	%	Canada 2012	%
A - Prime	840	2.1 %	221	2.1 %	1,061	2.1 %	970	2.0 %
AAA	26,027	65.7 %	5,979	56.7 %	32,006	63.8 %	30,883	64.4 %
AA	12,010	30.3 %	3,755	35.6 %	15,765	31.4 %	14,847	31.0 %
A	369	0.9 %	224	2.1 %	593	1.2 %	550	1.1 %
B1, 2, 3, 4	399	1.0 %	373	3.5 %	772	1.5 %	715	1.5 %
Year-to-date								
	West	%	East	%	Canada 2013	%	Canada 2012	%
A - Prime	5,043	1.4 %	2,488	2.3 %	7,531	1.6 %	5,485	1.1 %
AAA	210,196	60.1 %	60,508	55.0 %	270,704	58.9 %	277,711	54.2 %
AA	128,620	36.8 %	39,306	35.8 %	167,926	36.5 %	214,551	41.9 %
A	2,969	0.8 %	3,059	2.8 %	6,028	1.3 %	7,457	1.5 %
B1, 2, 3, 4	2,840	0.8 %	4,565	4.2 %	7,405	1.6 %	7,444	1.5 %

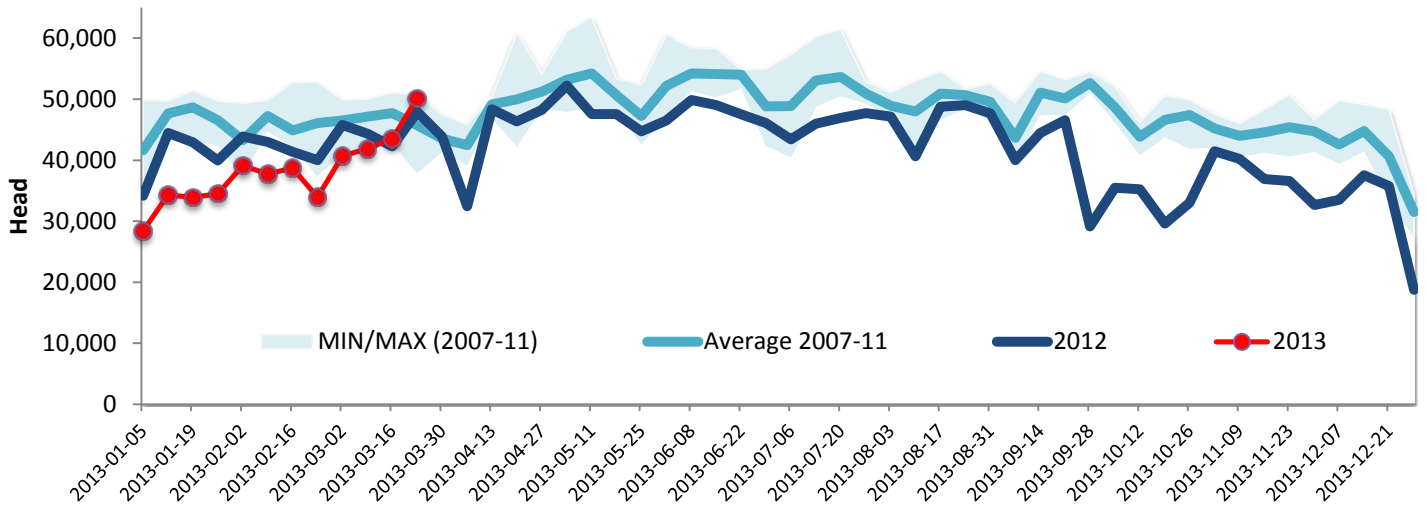
Source : Canadian Beef Grading Agency



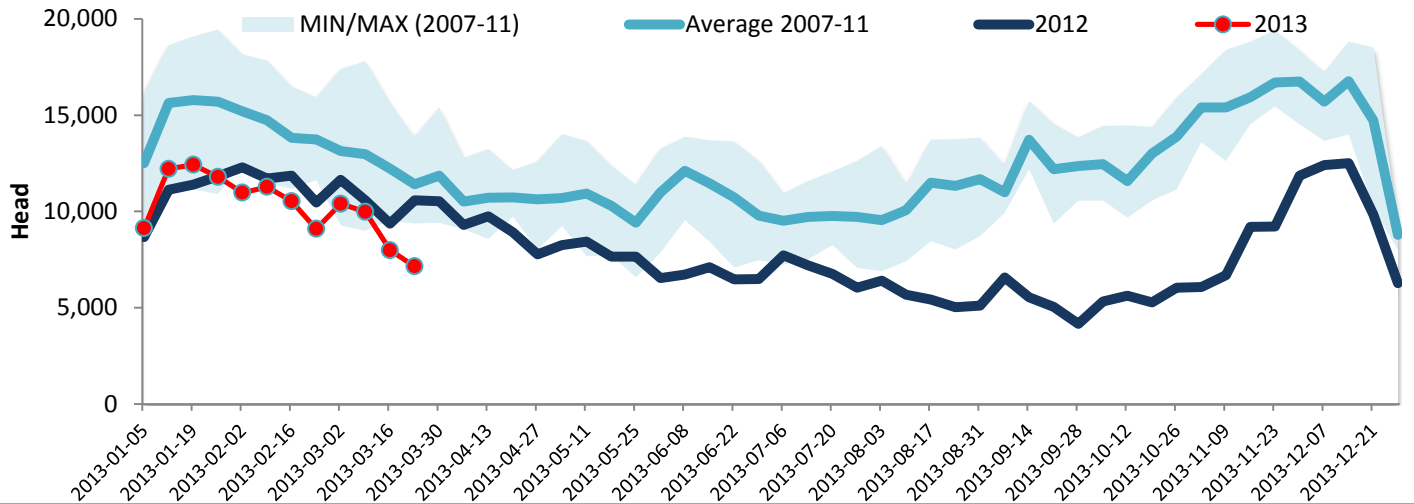
Year To Date for the Week Ending March 23, 2013

Federally Inspected Slaughter

Canadian Fed Slaughter



Canadian Non-Fed Slaughter



Total Cattle Slaughter in Canada

