



Beef Supply at a Glance - CANADA

Year To Date for the Week Ending March 16, 2013

Federally Inspected Slaughter (head)	West			East			CANADA		
	2013	2012	% chg	2013	2012	% chg	2013	2012	% chg
Steers	192,243	195,236	-2 %	69,098	72,354	-5 %	261,341	267,590	-2 %
Heifers	117,320	159,470	-26 %	28,120	35,160	-20 %	145,440	194,630	-25 %
Cows	90,368	71,861	26 %	25,075	45,598	-45 %	115,443	117,459	-2 %
Bulls	244	2,726	-91 %	150	773	-81 %	394	3,499	-89 %
Total	400,175	429,293	-7 %	122,443	153,885	-20 %	522,618	583,178	-10 %
Carcass Weight (lbs)									
Steers	883	883	0 %	906	886	2 %	889	884	1 %
Heifers	828	831	0 %	817	805	1 %	826	827	0 %
Cows	682	703	-3 %	652	629	4 %	676	675	0 %
Bulls	922	1,029	-10 %	918	928	-1 %	920	1,007	-9 %
Beef Output (tonnes)									
Fed	121,314	138,597	-12 %	38,899	42,004	-7 %	160,212	180,686	-11 %
Non-Fed	28,116	24,238	16 %	7,494	13,363	-44 %	35,637	37,640	-5 %
Total	149,431	162,835	-8 %	46,392	55,367	-16 %	195,849	218,326	-10 %

Source: Canadian Beef Grading Agency

EXPORTS				IMPORTS			
For the period Jan. 1 - March 9, 2013				For the period Jan. 1 - Jan. 31, 2013			
	2013	2012	% chg		2013	2012	% chg
Live Cattle				(# of head)			
slaughter steers & heifers	71,517	72,965	-2 %	Live Cattle pure bred	316	304	4 %
feeder cattle & calves	57,566	31,694	82 %	From U.S. non pure bred	917	3,615	-75 %
cows & bulls	75,840	36,813	106 %	Total	1,233	3,919	-69 %
others*	2,997	1,837	63 %	Source: Statistics Canada			
Total	207,920	143,309	45 %	For the period Jan. 1 - March 16, 2013			

*= breeding and others

Source: USDA - APHIS

Beef & Veal Exports to US			
(Tonnes) Jan. 1 - 31	2013	2012	% chg
Fresh/chilled cuts	9,621	18,042	-47 %
Frozen cuts	4,176	1,016	311 %
Offals	999	1,335	-25 %
Processed	5	5	0 %
TOTAL	14,801	20,398	-27 %
Exports (Jan. 1 - Dec. 31)		197,378	

Source: Statistics Canada

Beef and Veal			
(tonnes) preliminary	2013	2012	% chg
United States	37,485	30,653	22 %
New Zealand	3,184	7,555	-58 %
Australia	2,741	2,782	-1 %
Uruguay	4,109	2,847	44 %
Others	342	471	-27 %
Total	47,861	44,308	8 %
Non-NAFTA Beef/Veal total	9,903	13,116	-24 %
Fresh, chilled & frozen (H.S. 0201, 0202)			

Source: CFIA

Beef & Veal Exports			
(Tonnes) Jan. 1 to Jan. 31	2013	2012	% chg
United States	14,801	20,398	-27 %
Mexico	401	2,323	-83 %
Hong Kong	1,249	1,629	-23 %
Russia	53	593	-91 %
Japan	968	1,017	-5 %
China	238	0	
Egypt	119	263	-55 %
South Korea	177	0	
Columbia	0	0	
Ghana	0	0	
Suriname	59	25	
Ivory Coast	26	51	-48 %
Cuba	12	75	-84 %
Philippines	0	24	-98 %
Taiwan	0	47	-100 %
Others	699	247	
TOTAL	18,803	26,692	-30 %

Source: Statistics Canada

Beef & Veal Exports			
('000 \$ CDN) Jan. 1 to Jan. 31	2013	2012	% chg
United States	62,788	88,578	-29 %
Mexico	2,365	11,773	-80 %
Hong Kong	7,213	6,707	8 %
Japan	4,818	6,146	-22 %
Russia	140	1,821	-92 %
South Korea	960	0	
China	918	0	
Cuba	122	670	-82 %
Egypt	330	403	-18 %
Suriname	299	98	
Macedonia	0	0	
France	118	112	5 %
Taiwan	0	198	-100 %
Italy	0	150	-100 %
Switzerland	170	127	34 %
Others	2,650	1,068	
TOTAL	82,890	117,852	-30 %

Source: Statistics Canada

26,445

116,784

**Year To Date for the Week Ending March 9, 2013**

	Weekly	2013	2012	% chg		Weekly	2013	2012	% chg
Slaughter ('000 head)					Carcass Weight (lbs)				
Steers	287.6	2,871.5	2,891.7	-1 %	Steers	860	869	854	2 %
Heifers	177.6	1,728.2	1,822.7	-5 %	Heifers	802	805	794	1 %
Cows	123.7	1,227.9	1,254.1	-2 %	Cows	624	621	615	1 %
Bulls	9.4	90.7	97.3	-7 %	Bulls	882	882	871	1 %
Total	598.3	5,918.3	6,065.8	-2 %					
Total (Jan. To Dec. 2012)			32,336.9						

Source : USDA

Beef Output (tonnes)				
Fed		1,766,529	1,780,334	-1 %
Non-Fed		383,093	389,100	-2 %
Total		2,149,622	2,169,434	-1 %
Total (Jan. To Dec. 2012)			11,615,011	

National Summary of Beef Graded			
	Jan 2013	2012	2011
Prime	3.7 %	3.6 %	3.6 %
Choice	67.4 %	65.2 %	65.2 %
Select	28.6 %	30.8 %	30.7 %

	For the period Jan.	2013	2012	% chg
U.S. Beef and Veal Imports (carcass weight, ' 000 lbs)				
Canada		39	56	-30 %
Australia		56	56	-1 %
New Zealand		49	35	40 %
Other		55	43	29 %
Total		199	190	5 %

Cattle Slaughter for the Week Ending			
	2013	2012	% chg
Canada	51,836	54,917	-6 %
US	598,300	632,200	-5 %
Total Canada & US	650,136	687,117	-5 %

U.S. Beef and Veal Exports (carcass weight, ' 000 lbs)				
Mexico		29	38	-25 %
Canada		44	32	38 %
Japan		30	28	7 %
Other		88	84	5 %
Total		192	182	5 %

Cattle Slaughter Year to Date			
Canada	471,082	531,563	-11 %
US	5,918,300	6,065,800	-2 %
Total Canada & US	6,389,382	6,597,363	-3 %

US Live Cattle Imports			
Mexico - Feeder (Jan 1-March 16, 2013)	249,307	370,767	-33 %
Canada (Jan. 1) March 9, 2013)	207,920	143,309	45 %

Canada and United States Beef and Veal Tariff Rate Quota Summary

US Beef and Veal Tariff Rate Quota (TRQ) Summary							
YTD Week Ending March 18, 2013	2013			2012			2013 VS 2012
Quota level	Tonnes entered	% filled	Tonnes entered	% filled			
Australia	378,214	29,539	8 %	29,631	8 %	0 %	
New Zealand	213,402	32,979	15 %	23,038	11 %	43 %	
Argentina	20,000	0	0 %	0	0 %		
Uruguay	20,000	5,217	26 %	2,756	14 %	89 %	
Japan	200	14	7 %	0	0 %		
Others	64,805	9,376	14 %	9,700	15 %	-3 %	
Total TRQ	696,621	77,125	11 %	65,125	9 %	18 %	
TRQ (Australia, New Zealand)	591,616	62,518	11 %	52,669	9 %	19 %	
Canada	no limit	29,689	n/a	41,948	n/a	-29 %	
Mexico	no limit	17,696	n/a	14,257	n/a	24 %	

Canadian Beef and Veal Import Permits by Country			
YTD Week Ending March 18, 2013	2013	2012	% chg
Global quota (tonnes)	76,409	76,409	0 %
Supp. Quota Authorized	-	-	
Total quota	76,409	76,409	0 %
Permits issued			
New Zealand (29600 mt)	3,542	7,735	-54 %
Australia (35000 mt)	3,163	2,765	14 %
Uruguay	4,397	2,985	47 %
Japan	1	-	
Total	11,103	13,485	-18 %

Canadian Beef and Veal Import Permits by Type of Meat					
2013		(tonnes)		Total Total (%)	
	Grinding Beef	Cuts			
Japan	0	1	1	0 %	
Australia	1,694	1,469	3,163	28 %	
New Zealand	1,313	2,229	3,542	32 %	
Uruguay	4,233	164	4,397	40 %	
Total	7,240	3,863	11,103	100 %	
YTD March 18, 2013					
Percentage of Total Imports					
	Grinding Beef		Cuts		
	2013	2012	2013	2012	
Australia	15.3 %	13.3 %	13.2 %	7.2 %	
New Zealand	11.8 %	23.1 %	20.1 %	34.2 %	
Argentina					
Uruguay	38.1 %	19.7 %	1.5 %	2.5 %	
Total	65.2 %	56.1 %	34.8 %	43.9 %	

Sources : Canadian Slaughter and Grading Data, CBGA, US Data: USDA, Canadian TRQ Data: DFAIT



Beef Supply at a Glance

Year To Date for the Week Ending March 16, 2013

Weekly Federally Inspected Slaughter

	Fed Slaughter				Non-fed Slaughter				Total Canada
	West	East	Canada	Weekly Avg.	West	East	Canada	Weekly Avg.	
2013-03-16	33,411	10,132	43,543		6,013	1,980	7,993		51,536
2013-03-09	31,856	9,997	41,853		7,923	2,060	9,983		51,836
2013-03-02	30,695	10,005	40,700		8,198	2,207	10,405		51,105
2013-02-23	26,071	7,903	33,974		7,071	2,023	9,094		43,068
2013-02-16	30,036	8,665	38,701		8,454	2,079	10,533		49,234
2013-02-09	27,960	9,746	37,706		9,134	2,138	11,272		48,978
2013-02-02	31,542	7,619	39,161		8,423	2,556	10,979		50,140
2013-01-26	26,655	7,896	34,551		9,168	2,633	11,801		46,352
2013-01-19	24,617	9,278	33,895		9,329	3,092	12,421		46,316
2013-01-12	25,522	8,789	34,311		9,279	2,935	12,214		46,525
2013-01-05	21,198	7,188	28,386		7,620	1,522	9,142		37,528
December 2012	112,442	45,782	158,224	31,645	40,972	11,932	52,904	10,581	211,128
November 2012	110,962	44,226	155,188	38,797	21,653	9,536	31,189	7,797	186,377
October 2012	88,401	44,977	133,378	33,345	14,947	7,324	22,271	5,568	155,649
September 2012	155,560	52,350	207,910	41,582	18,398	8,020	26,418	5,284	234,328
August 2012	145,455	40,151	185,606	46,402	16,472	5,977	22,449	5,612	208,055
July 2012	144,623	39,432	184,055	46,014	20,769	7,061	27,830	6,958	211,885
June 2012	189,338	49,697	239,035	47,807	23,060	10,253	33,313	6,663	272,348
May 2012	151,522	40,598	192,120	48,030	18,765	13,246	32,011	8,003	224,131
April 2012	136,434	38,963	175,397	43,849	21,529	14,214	35,743	8,936	211,140
March 2012	170,035	54,134	224,169	44,834	33,164	19,548	52,712	10,542	276,881
February 2012	131,791	36,498	168,289	42,072	28,607	17,727	46,334	11,584	214,623
January 2012	122,876	38,695	161,571	40,393	26,205	16,832	43,037	10,759	204,608
to date 2013	309,563	97,218	406,781	36,980	90,612	25,225	115,837	10,531	522,618
Total 2012	1,659,439	525,503	2,184,942	42,018	284,541	141,670	426,211	8,196	2,611,153

Source : Canadian Beef Grading Agency

Grading	Weekly Totals March 16, 2013							
	West	%	East	%	Canada 2013	%	Canada 2012	%
A - Prime	715	2.1 %	385	3.7 %	1,100	2.5 %	630	1.5 %
AAA	21,454	64.3 %	5,891	55.9 %	27,345	62.3 %	26,285	62.0 %
AA	10,699	32.1 %	3,633	34.5 %	14,332	32.6 %	14,270	33.7 %
A	232	0.7 %	249	2.4 %	481	1.1 %	514	1.2 %
B1, 2, 3, 4	268	0.8 %	372	3.5 %	640	1.5 %	662	1.6 %
	Year-to-date							
	West	%	East	%	Canada 2013	%	Canada 2012	%
A - Prime	4,203	1.4 %	2,467	2.5 %	6,670	1.6 %	4,515	1.0 %
AAA	184,169	59.4 %	54,529	54.8 %	238,698	58.3 %	246,828	53.1 %
AA	116,610	37.6 %	35,551	35.7 %	152,161	37.1 %	199,704	43.0 %
A	2,600	0.8 %	2,835	2.8 %	5,435	1.3 %	6,907	1.5 %
B1, 2, 3, 4	2,441	0.8 %	4,192	4.2 %	6,633	1.6 %	6,729	1.4 %

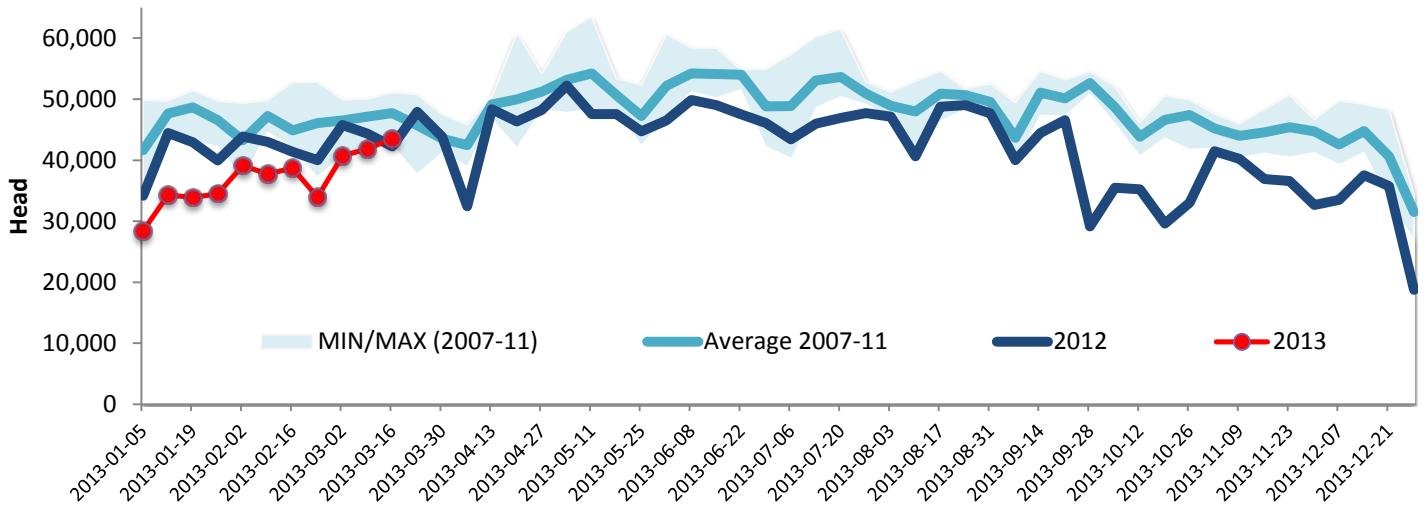
Source : Canadian Beef Grading Agency



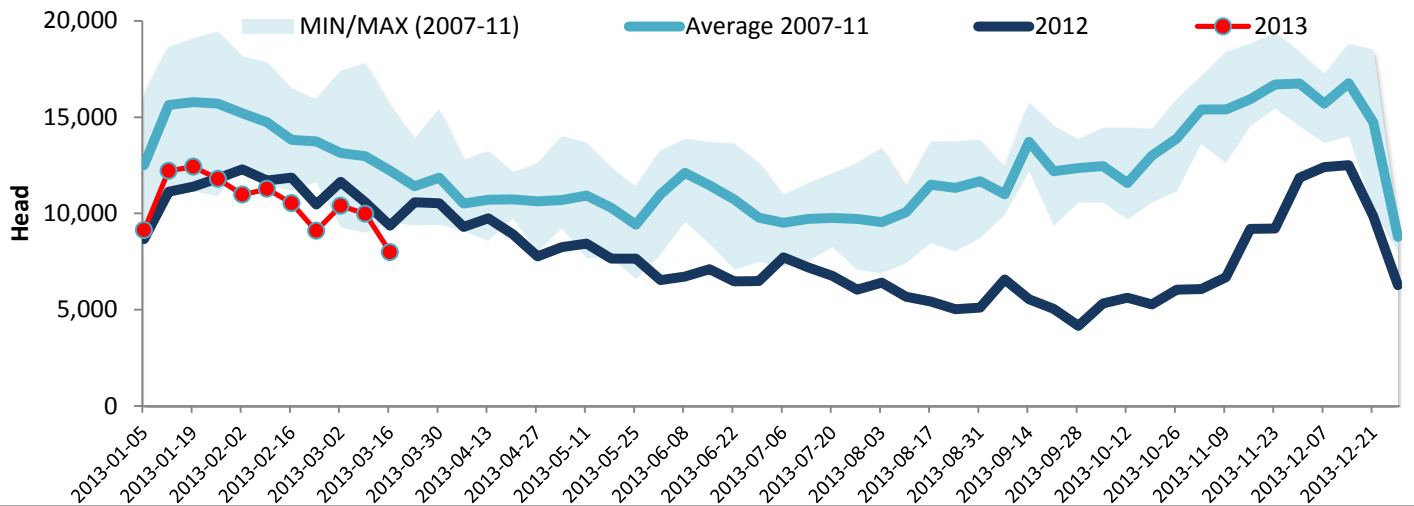
Year To Date for the Week Ending March 16, 2013

Federally Inspected Slaughter

Canadian Fed Slaughter



Canadian Non-Fed Slaughter



Total Cattle Slaughter in Canada

