



# Beef Supply at a Glance - CANADA

Year To Date for the Week Ending March 2, 2013

Federally Inspected Slaughter (head)	West			East			CANADA		
	2013	2012	% chg	2013	2012	% chg	2013	2012	% chg
Steers	156,080	164,505	-5 %	54,317	58,093	-6 %	210,397	222,598	-5 %
Heifers	88,216	125,289	-30 %	22,772	27,750	-18 %	110,988	153,039	-27 %
Cows	76,542	60,258	27 %	21,051	37,870	-44 %	97,593	98,128	-1 %
Bulls	134	2,123	-94 %	134	637	-79 %	268	2,760	-90 %
<b>Total</b>	<b>320,972</b>	<b>352,175</b>	<b>-9 %</b>	<b>98,274</b>	<b>124,350</b>	<b>-21 %</b>	<b>419,246</b>	<b>476,525</b>	<b>-12 %</b>
<b>Carcass Weight (lbs)</b>									
Steers	882	883	0 %	904	884	2 %	887	883	0 %
Heifers	824	830	-1 %	816	801	2 %	822	825	0 %
Cows	681	704	-3 %	650	628	4 %	675	675	0 %
Bulls	902	1,026	-12 %	919	945	-3 %	910	1,008	-10 %
<b>Beef Output (tonnes)</b>									
Fed	95,615	113,294	-16 %	30,766	33,446	-8 %	126,297	146,732	-14 %
Non-Fed	23,748	20,273	17 %	6,276	11,084	-43 %	30,054	31,372	-4 %
<b>Total</b>	<b>119,363</b>	<b>133,567</b>	<b>-11 %</b>	<b>37,041</b>	<b>44,530</b>	<b>-17 %</b>	<b>156,352</b>	<b>178,104</b>	<b>-12 %</b>

Source: Canadian Beef Grading Agency

EXPORTS				IMPORTS				
For the period Jan. 1 - Feb. 23, 2013				For the period Jan. 1 - Dec. 31, 2012				
	2013	2012	% chg	(# of head)	2012	2011	% chg	
Live Cattle				Live Cattle	pure bred	4,291	3,768	14 %
slaughter steers & heifers	52,640	52,986	-1 %	From U.S.	non pure bred	40,380	69,579	-42 %
feeder steers & heifers	37,908	21,332	78 %	<b>Total</b>		<b>44,671</b>	<b>73,347</b>	<b>-39 %</b>
cows & bulls	59,894	29,304	104 %					
others*	2,393	1,153	108 %					
<b>Total</b>	<b>152,835</b>	<b>104,775</b>	<b>46 %</b>					

Source: Statistics Canada

\* = breeding and others

Source: USDA - APHIS

Beef & Veal Exports to US			
(Tonnes)	2012	2011	% chg
Fresh/chilled cuts	164,736	218,188	-24 %
Frozen cuts	17,693	16,115	10 %
Offals	13,766	14,571	-6 %
Processed	1,183	1,075	10 %
<b>TOTAL</b>	<b>197,378</b>	<b>249,949</b>	<b>-21 %</b>
Exports (Jan. 1 - Dec. 31)		249,949	

Source: Statistics Canada

Beef and Veal			
(tonnes) preliminary	2013	2012	% chg
United States	31,473	24,421	29 %
New Zealand	2,302	6,121	-62 %
Australia	2,375	2,354	1 %
Uruguay	3,702	2,669	39 %
Others	220	284	-23 %
<b>Total</b>	<b>40,072</b>	<b>35,849</b>	<b>12 %</b>
<b>Non-NAFTA Beef/Veal total</b>	<b>8,260</b>	<b>11,130</b>	<b>-26 %</b>
Fresh, chilled & frozen (H.S. 0201, 0202)			

Source: CFIA

Beef & Veal Exports			
(Tonnes)	Jan. 1 to Dec. 31		
	2012	2011	% chg
United States	197,378	249,949	-21 %
Mexico	22,469	29,782	-25 %
Hong Kong	18,410	22,097	-17 %
Russia	6,283	8,146	-23 %
Japan	13,196	12,341	7 %
China	1,359	0	
Egypt	1,828	2,522	-28 %
South Korea	2,247	55	
Columbia	508	0	
Ghana	358	406	-12 %
Suriname	619	621	0 %
Ivory Coast	517	547	-6 %
Cuba	437	726	-40 %
Philippines	906	1,475	-39 %
Taiwan	372	1,077	-65 %
Others	4,162	5,741	-28 %
<b>TOTAL</b>	<b>271,049</b>	<b>335,486</b>	<b>-19 %</b>

Source: Statistics Canada

Beef & Veal Exports			
('000 \$ CDN)	Jan. 1 to Dec. 31		
	2012	2011	% chg
United States	875,606	956,656	-8 %
Mexico	111,476	141,069	-21 %
Hong Kong	78,227	91,918	-15 %
Japan	74,748	66,607	12 %
Russia	15,488	23,696	-35 %
South Korea	10,057	96	
China	4,645	0	
Cuba	3,485	5,226	-33 %
Egypt	3,254	4,224	-23 %
Suriname	2,636	2,370	11 %
Macedonia	1,964	4,332	-55 %
France	2,222	1,716	30 %
Taiwan	1,421	5,571	-74 %
Italy	2,335	2,309	1 %
Switzerland	1,962	1,171	68 %
Others	19,404	22,443	-14 %
<b>TOTAL</b>	<b>1,208,932</b>	<b>1,329,405</b>	<b>-9 %</b>

Source: Statistics Canada



## Year To Date for the Week Ending February 23, 2013

	Weekly	2013	2012	% chg		Weekly	2013	2012	% chg
<b>Slaughter ('000 head)</b>					<b>Carcass Weight (lbs)</b>				
Steers	274.8	2,313.2	2,293.9	1 %	Steers	867	871	855	2 %
Heifers	164.6	1,382.0	1,431.4	-3 %	Heifers	807	807	793	2 %
Cows	119.3	987.3	1,010.6	-2 %	Cows	621	621	612	1 %
Bulls	9.4	73.0	77.6	-6 %	Bulls	884	882	869	2 %
<b>Total</b>	<b>568.1</b>	<b>4,755.5</b>	<b>4,813.5</b>	<b>-1 %</b>					
<b>Total (Jan. To Dec. 2012)</b>			<b>32,336.9</b>						

Source : USDA

<b>Beef Output (tonnes)</b>		2013	2012	% chg
Fed		1,422,551	1,407,448	1 %
Non-Fed		307,740	311,783	-1 %
<b>Total</b>		<b>1,730,290</b>	<b>1,719,230</b>	<b>1 %</b>
<b>Total (Jan. To Dec. 2012)</b>			<b>11,615,011</b>	

<b>National Summary of Beef Graded</b>			
	Jan 2013	2012	2011
Prime	3.7 %	3.6 %	3.6 %
Choice	67.4 %	65.2 %	65.2 %
Select	28.6 %	30.8 %	30.7 %

	For the period Jan -Dec.	2012	2011	% chg
<b>U.S. Beef and Veal Imports (carcass weight, ' 000 lbs)</b>				
Canada		537,490	689,081	-22 %
Australia		654,523	452,043	45 %
New Zealand		495,460	456,795	8 %
Other		531,727	458,606	16 %
<b>Total</b>		<b>2,219,200</b>	<b>2,056,525</b>	<b>8 %</b>

<b>Cattle Slaughter for the Week Ending</b>				
	2013	2012	% chg	
Canada		43,068	50,475	-15 %
US		568,100	586,900	-3 %
<b>Total Canada &amp; US</b>	<b>611,168</b>	<b>637,375</b>	<b>-4 %</b>	

<b>U.S. Beef and Veal Exports (carcass weight, ' 000 lbs)</b>		2012	2011	% chg
Mexico		351,799	488,001	-28 %
Canada		467,218	500,272	-7 %
Japan		449,602	456,265	-1 %
Other		1,186,040	1,340,287	-12 %
<b>Total</b>		<b>2,454,658</b>	<b>2,784,825</b>	<b>-12 %</b>

<b>Cattle Slaughter Year to Date</b>				
Canada		368,141	419,231	-12 %
US		4,755,500	4,813,500	-1 %
<b>Total Canada &amp; US</b>	<b>5,123,641</b>	<b>5,232,731</b>	<b>-2 %</b>	

<b>US Live Cattle Imports</b>				
Mexico - Feeder (Jan 1-March 2, 2013)		193,083	294,361	-34 %
Canada (Jan. 1- Feb. 23, 2013)		152,835	104,775	46 %

## Canada and United States Beef and Veal Tariff Rate Quota Summary

<b>US Beef and Veal Tariff Rate Quota (TRQ) Summary</b>							
YTD Week Ending March 4, 2013	2013			2012			2013 VS 2012
Quota level	Tonnes entered	% filled	Tonnes entered	% filled			
Australia	378,214	24,739	7 %	24,048	6%	3 %	
New Zealand	213,402	23,343	11 %	16,382	8%	42 %	
Argentina	20,000	0	0 %	0	0%		
Uruguay	20,000	3,827	19 %	2,193	11%	75 %	
Japan	200	10	5 %	0	0%		
Others	64,805	7,324	11 %	7,806	12%	-6 %	
<b>Total TRQ</b>	<b>696,621</b>	<b>59,243</b>	<b>9 %</b>	<b>50,429</b>	<b>7%</b>	<b>17 %</b>	
<b>TRQ (Australia, New Zealand)</b>	<b>591,616</b>	<b>48,082</b>	<b>8 %</b>	<b>40,430</b>	<b>7%</b>	<b>19 %</b>	
Canada	no limit	22,789	n/a	31,366	n/a	-27 %	
Mexico	no limit	13,539	n/a	10,489	n/a	29 %	

<b>Canadian Beef and Veal Import Permits by Country</b>			
YTD Week Ending March 4, 2013	2013	2012	% chg
Global quota (tonnes)	76,409	76,409	0 %
Supp. Quota Authorized	-	-	
<b>Total quota</b>	<b>76,409</b>	<b>76,409</b>	<b>0 %</b>
Permits issued			
New Zealand (29600 mt)	2,961	6,407	-54 %
Australia (35000 mt)	2,858	2,361	21 %
Uruguay	3,988	2,883	38 %
Japan	-	-	
<b>Total</b>	<b>9,807</b>	<b>11,651</b>	<b>-16 %</b>

<b>Canadian Beef and Veal Import Permits by Type of Meat</b>				
	2013		(tonnes)	
	Grinding Beef	Cuts	Total	Total (%)
Japan	0	0	0	0 %
Australia	1,631	1,227	2,858	29 %
New Zealand	1,185	1,776	2,961	30 %
Uruguay	3,824	164	3,988	41 %
<b>Total</b>	<b>6,640</b>	<b>3,167</b>	<b>9,807</b>	<b>100 %</b>
YTD March 4, 2013	Percentage of Total Imports			
	Grinding Beef		Cuts	
	2013	2012	2013	2012
Australia	16.6 %	13.4 %	12.5 %	6.9 %
New Zealand	12.1 %	21.3 %	18.1 %	33.7 %
Argentina				
Uruguay	39.0 %	21.9 %	1.7 %	2.8 %
<b>Total</b>	<b>67.7 %</b>	<b>56.6 %</b>	<b>32.3 %</b>	<b>43.4 %</b>

Sources : Canadian Slaughter and Grading Data, CBGA, US Data: USDA, Canadian TRQ Data: DFAIT



# Beef Supply at a Glance

Year To Date for the Week Ending March 2, 2013

## Weekly Federally Inspected Slaughter

	Fed Slaughter				Non-fed Slaughter				Total Canada
	West	East	Canada	Weekly Avg.	West	East	Canada	Weekly Avg.	
2013-03-02	30,695	10,005	40,700		8,198	2,207	10,405		51,105
2013-02-23	26,071	7,903	33,974		7,071	2,023	9,094		43,068
2013-02-16	30,036	8,665	38,701		8,454	2,079	10,533		49,234
2013-02-09	27,960	9,746	37,706		9,134	2,138	11,272		48,978
2013-02-02	31,542	7,619	39,161		8,423	2,556	10,979		50,140
2013-01-26	26,655	7,896	34,551		9,168	2,633	11,801		46,352
2013-01-19	24,617	9,278	33,895		9,329	3,092	12,421		46,316
2013-01-12	25,522	8,789	34,311		9,279	2,935	12,214		46,525
2013-01-05	21,198	7,188	28,386		7,620	1,522	9,142		37,528
December 2012	112,442	45,782	158,224	31,645	40,972	11,932	52,904	10,581	211,128
November 2012	110,962	44,226	155,188	38,797	21,653	9,536	31,189	7,797	186,377
October 2012	88,401	44,977	133,378	33,345	14,947	7,324	22,271	5,568	155,649
September 2012	155,560	52,350	207,910	41,582	18,398	8,020	26,418	5,284	234,328
August 2012	145,455	40,151	185,606	46,402	16,472	5,977	22,449	5,612	208,055
July 2012	144,623	39,432	184,055	46,014	20,769	7,061	27,830	6,958	211,885
June 2012	189,338	49,697	239,035	47,807	23,060	10,253	33,313	6,663	272,348
May 2012	151,522	40,598	192,120	48,030	18,765	13,246	32,011	8,003	224,131
April 2012	136,434	38,963	175,397	43,849	21,529	14,214	35,743	8,936	211,140
March 2012	170,035	54,134	224,169	44,834	33,164	19,548	52,712	10,542	276,881
February 2012	131,791	36,498	168,289	42,072	28,607	17,727	46,334	11,584	214,623
January 2012	122,876	38,695	161,571	40,393	26,205	16,832	43,037	10,759	204,608
to date 2013	244,296	77,089	321,385	35,709	76,676	21,185	97,861	10,873	419,246
Total 2012	1,659,439	525,503	2,184,942	42,018	284,541	141,670	426,211	8,196	2,611,153

Source : Canadian Beef Grading Agency

Grading								
	Weekly Totals				March 2, 2013			
	West	%	East	%	Canada 2013	%	Canada 2012	%
A - Prime	495	1.6 %	210	2.1 %	705	1.7 %	493	1.1 %
AAA	19,338	62.9 %	5,663	55.7 %	25,001	61.1 %	26,851	58.6 %
AA	10,338	33.6 %	3,633	35.7 %	13,971	34.2 %	17,330	37.8 %
A	219	0.7 %	271	2.7 %	490	1.2 %	513	1.1 %
B1, 2, 3, 4	342	1.1 %	392	3.9 %	734	1.8 %	622	1.4 %
Year-to-date								
	West	%	East	%	Canada 2013	%	Canada 2012	%
A - Prime	2,942	1.2 %	1,903	2.4 %	4,845	1.5 %	3,318	0.9 %
AAA	142,272	58.1 %	42,811	54.2 %	185,083	57.2 %	194,103	51.4 %
AA	95,524	39.0 %	28,429	36.0 %	123,953	38.3 %	169,128	44.8 %
A	2,094	0.9 %	2,299	2.9 %	4,393	1.4 %	5,872	1.6 %
B1, 2, 3, 4	1,915	0.8 %	3,475	4.4 %	5,390	1.7 %	5,448	1.4 %

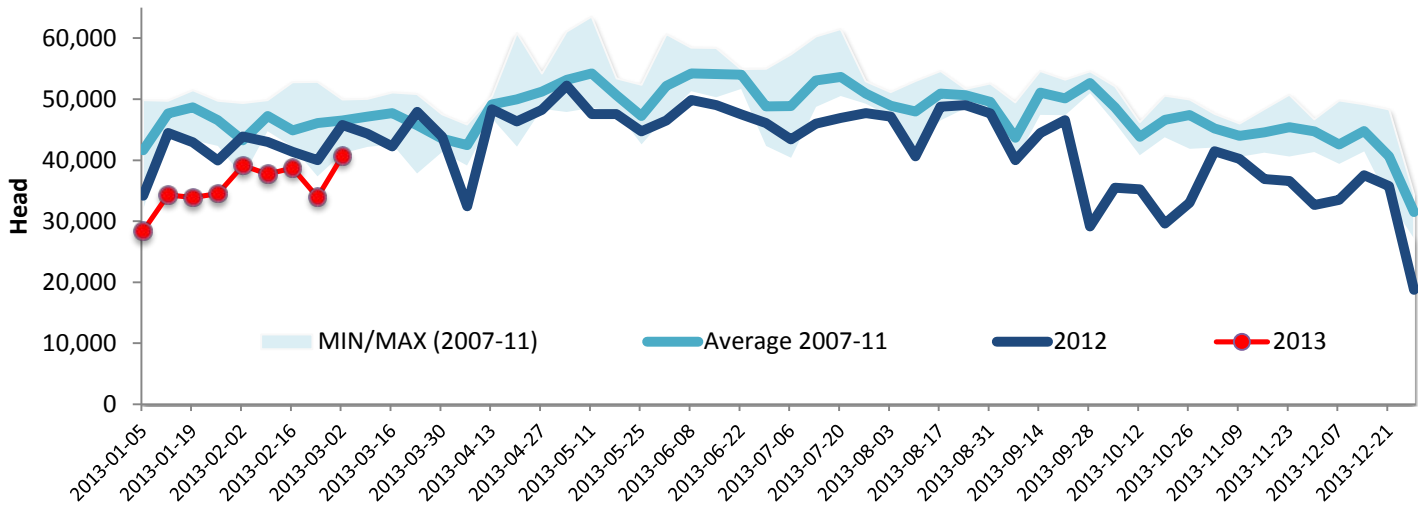
Source : Canadian Beef Grading Agency



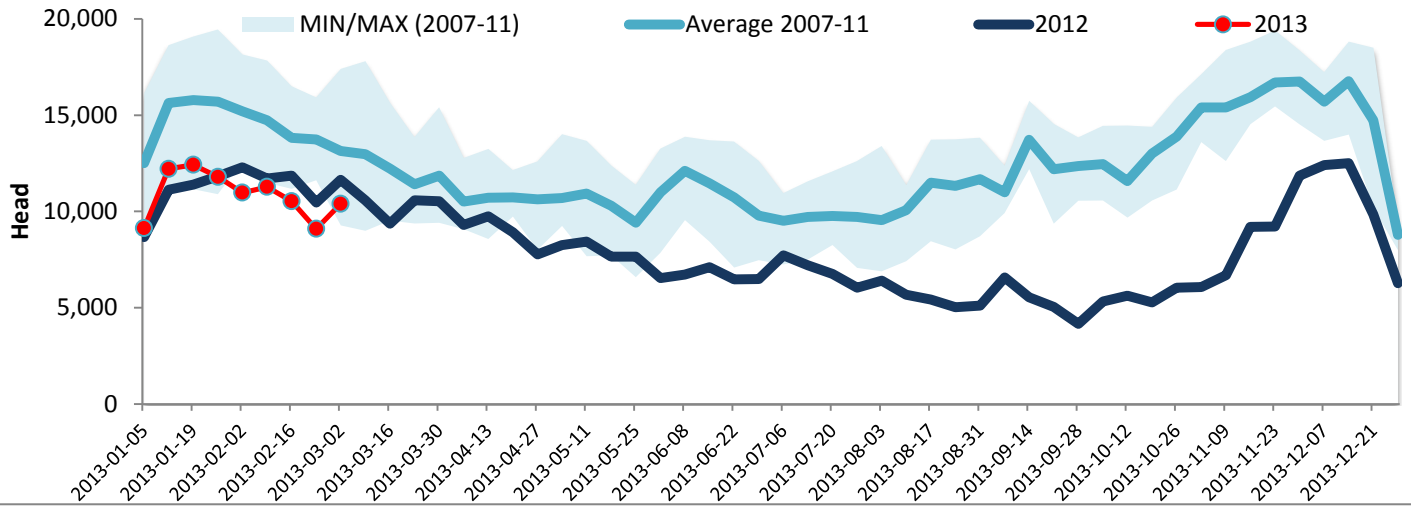
Year To Date for the Week Ending March 2, 2013

Federally Inspected Slaughter

### Canadian Fed Slaughter



### Canadian Non-Fed Slaughter



### Total Cattle Slaughter in Canada

