



Beef Supply at a Glance - CANADA

Year To Date for the Week Ending January 25, 2014

Federally Inspected Slaughterer (head)	West			East			CANADA		
	2014	2013	% chg	2014	2013	% chg	2014	2013	% chg
Steers	73,794	65,580	13 %	26,590	23,350	14 %	100,384	88,930	13 %
Heifers	37,647	32,412	16 %	10,535	9,801	7 %	48,182	42,213	14 %
Cows	34,081	35,396	-4 %	8,963	10,135	-12 %	43,044	45,531	-5 %
Bulls	144	0		36	47		180	47	
Total	145,666	133,388	9 %	46,124	43,333	6 %	191,790	176,721	9 %
Carcass Weight (lbs)									
Steers	830	876	-5 %	898	905	-1 %	848	884	-4 %
Heifers	785	821	-4 %	808	822	-2 %	790	821	-4 %
Cows	672	683	-2 %	655	649	1 %	668	676	-1 %
Bulls	858	0		961	934	3 %	878	934	-6 %
Beef Output (tonnes)									
Fed	41,274	38,208	8 %	14,723	13,267	11 %	55,995	51,487	9 %
Non-Fed	10,466	10,989	-5 %	2,684	3,010	-11 %	13,142	14,010	-6 %
Total	51,740	49,197	5 %	17,407	16,277	7 %	69,137	65,497	6 %

Source: Canadian Beef Grading Agency

EXPORTS	For the period Jan. 1 - Jan. 18, 2014		
	2014	2013	% chg
Live Cattle			
slaughter steers & heifers	17,888	15,082	19 %
feeder cattle & calves	7,461	5,236	42 %
cows & bulls	19,620	20,694	-5 %
others*	2,147	892	
Total	47,116	41,904	12 %

* = breeding and others

Source: USDA - APHIS

Beef & Veal Exports to US	2013	2012	% chg
(Tonnes) Jan. 1 - Nov 30			
Fresh/chilled cuts	155,801	156,854	-1 %
Frozen cuts	12,317	15,255	-19 %
Offals	14,023	13,019	8 %
Processed	1,066	1,074	-1 %
TOTAL	183,207	186,202	-2 %
Exports (Jan. 1 - Dec. 31)		271,045	

Source: Statistics Canada

IMPORTS	For the period Jan. 1 - Nov. 30, 2013		
(# of head)	2013	2012	% chg
Live Cattle pure bred	3,308	4,059	-19 %
From U.S. non pure bred	52,326	47,286	11 %
Total	55,634	51,345	8 %

Source: Statistics Canada

	For the period Jan. 1 - Jan. 25, 2014		
	2014	2013	% chg
Beef and Veal			
(tonnes) preliminary			
United States	10,578	14,224	-26 %
New Zealand	449	1,249	-64 %
Australia	1,064	1,543	-31 %
Uruguay	518	2,109	-75 %
Others	201	52	
Total	12,810	19,177	-33 %
Non-NAFTA Beef/Veal total	2,006	4,848	-59 %
Fresh, chilled & frozen (H.S. 0201, 0202)			

Source: CFIA

Beef & Veal Exports	Jan. 1 to Nov. 30		
(Tonnes)	2013	2012	% chg
United States	183,207	186,202	-2 %
Hong Kong	23,161	16,767	38 %
Mexico	15,666	21,922	-29 %
Japan	14,652	11,954	23 %
China	5,745	600	
Egypt	2,086	938	
Saudi Arabia	1,330	1,618	-18 %
Macau	1,286	107	
South Korea	1,017	3	
Peru	982	1,970	-50 %
Angola	921	0	
Russia	623	393	59 %
Cuba	611	6,254	-90 %
Suriname	562	335	68 %
Taiwan	523	619	-16 %
Others	5,529	4,903	13 %
TOTAL	257,902	254,585	1 %

Source: Statistics Canada

Beef & Veal Exports	Jan. 1 to Nov. 30		
('000 \$ CDN)	2013	2012	% chg
United States	834,137	827,264	1 %
Hong Kong	148,249	67,984	
Mexico	81,806	108,329	-24 %
Japan	72,034	69,046	4 %
China	22,076	3,347	
Egypt	2,768	3,023	-8 %
Saudi Arabia	12,701	879	
Macau	6,791	20	
South Korea	6,390	8,871	-28 %
Peru	1,058	4	
Angola	799	533	50 %
Russia	1,718	15,400	-89 %
Cuba	3,623	2,930	24 %
Suriname	2,867	2,636	9 %
Taiwan	2,720	1,339	
Others	22,048	22,010	0 %
TOTAL	1,221,784	1,133,615	8 %

Source: Statistics Canada

**UNITED STATES**

Year To Date for the Week Ending January 18, 2014

	Weekly	2014	2013	% chg		Weekly	2014	2013	% chg
Slaughter ('000 head)					Carcass Weight (lbs)				
Steers	283.1	829.4	860.8	-4 %	Steers	870	872	873	0 %
Heifers	170.5	490.0	492.2	0 %	Heifers	810	808	804	0 %
Cows	135.8	353.9	377.8	-6 %	Cows	624	624	620	1 %
Bulls	11.2	25.0	26.0	-4 %	Bulls	875	871	885	-2 %
Total	600.7	1,698.4	1,756.9	-3 %					
Total (Jan. To Dec. 2013)			31,796.9						Source : USDA

Beef Output (tonnes)				National Summary of Beef Graded			
					Dec 2013	2012	2011
Fed	508,763	521,483	-2 %	Prime	4.2 %	3.6 %	3.6 %
Non-Fed	110,235	116,929	-6 %	Choice	67.3 %	65.2 %	65.3 %
Total	618,998	638,412	-3 %	Select	28.4 %	30.9 %	30.7 %
Total (Jan. To Dec. 2013)		11,615,011					

Cattle Slaughter for the Week Ending				2014-01-18				
				2014	2013	% chg		
For the period	Jan. - Nov.	2013	2012					
U.S. Beef and Veal Imports (carcass weight, ' 000 lbs)								
Canada		498,865	507,702		51,148	46,316	10 %	
Australia		569,863	604,264		600,696	611,590	-2 %	
New Zealand		495,418	461,471		Total Canada & US	651,844	657,906	-1 %
Other		519,800	483,776					
Total		2,083,946	2,057,213	1 %				

U.S. Beef and Veal Exports (carcass weight, ' 000 lbs)				Cattle Slaughter Year to Date				
					2014	2013	% chg	
Mexico		357,326	327,050		Canada	137,705	130,369	6 %
Canada		427,811	420,465		US	1,698,285	1,756,868	-3 %
Japan		626,198	422,717		Total Canada & US	1,835,990	1,887,237	-3 %
Other		944,477	1,085,799					
Total		2,355,812	2,256,031	4 %				

US Live Cattle Imports							
Mexico - Feeder (Jan 1-Jan. 25, 2014)					46,495	60,758	-23 %
Canada (Jan. 1 - Jan. 18, 2014)					47,116	41,904	12 %

Canada and United States Beef and Veal Tariff Rate Quota Summary**US Beef and Veal Tariff Rate Quota (TRQ) Summary**

YTD Week Ending Jan. 25, 2014		2014		2013		2014 VS 2013	
	Quota level	Tonnes entered	% filled	Tonnes entered	% filled		
Australia	378,214	5,633	1 %	8,569	2%	-34 %	
New Zealand	213,402	3,896	2 %	5,992	3%	-35 %	
Argentina	20,000	0	0 %	0	0%		
Uruguay	20,000	311	2 %	739	4%	-58 %	
Japan	200	7	4 %	6	3%		
Others	64,805	2,084	3 %	2,264	3%	-8 %	
Total TRQ	696,621	11,931	2 %	17,570	3%	-32 %	
TRQ (Australia, N. Z.)	591,616	9,530	2 %	14,561	2%	-35 %	
Canada	no limit	5,353	n/a	5,853	n/a		
Mexico	no limit	2,406	n/a	3,546	n/a		

Canadian Beef and Veal Import Permits by Country

YTD Week Ending Jan. 25, 2014			
	2014	2013	% chg
Global quota (tonnes)	76,409	76,409	0 %
Supp. Quota Authorized	-	-	
Total quota	76,409	76,409	0 %
Permits issued			
New Zealand (29600 mt)	868	1,202	-28 %
Australia (35000 mt)	1,665	1,726	-4 %
Uruguay	1,347	2,227	-40 %
Japan	0	0	
Total	3,880	5,155	-25 %

Canadian Beef and Veal Import Permits by Type of Meat

YTD Jan. 25, 2014				
2014		(tonnes)		
	Grinding Beef	Cuts	Total Total (%)	
Japan	0	0	0	
Australia	9	1,656	1,665	
New Zealand	0	868	868	
Uruguay	226	1,121	1,347	
Total	235	3,645	3,880	
Percentage of Total Imports				
	2014	2013		
	Grinding Beef		Cuts	
Australia	0.2 %	14.7 %	42.7 %	8.6 %
New Zealand	0.0 %	6.2 %	22.4 %	6.9 %
Argentina				
Uruguay	5.8 %	15.4 %	28.9 %	0.0 %
Total	6.1 %	36.3 %	93.9 %	15.5 %

Sources : Canadian Slaughter and Grading Data, CBGA, US Data: USDA, Canadian TRQ Data: DFAIT



Beef Supply at a Glance

Year To Date for the Week Ending January 25, 2014

Weekly Federally Inspected Slaughter

	Fed Slaughter				Non-fed Slaughter				Total Canada
	West	East	Canada	Weekly Avg.	West	East	Canada	Weekly Avg.	
2014-01-25	32,427	9,970	42,397		9,147	2,541	11,688		54,085
2014-01-18	29,566	10,243	39,809		8,892	2,447	11,339		51,148
2014-01-11	28,958	9,521	38,479		8,554	2,387	10,941		49,420
2014-01-04	20,490	7,391	27,881		7,632	1,624	9,256		37,137
2013-12-28	17,726	4,417	22,143		6,277	1,032	7,309		29,452
2013-12-21	25,720	9,936	35,656		12,205	2,281	14,486		50,142
December 2013	129,571	48,817	178,388	35,678	49,111	10,725	59,836	11,967	238,224
November 2013	118,003	41,585	159,588	39,897	39,756	9,317	49,073	12,268	208,661
October 2013	123,755	43,450	167,205	41,801	32,154	7,032	39,186	9,797	206,391
September 2013	174,998	52,658	227,656	45,531	27,352	6,966	34,318	6,864	261,974
August 2013	132,749	39,384	172,133	43,033	22,682	6,630	29,312	7,328	201,445
July 2013	127,118	41,123	168,241	42,060	22,389	6,049	28,438	7,110	196,679
June 2013	149,357	54,963	204,320	40,864	25,649	8,168	33,817	6,763	238,137
May 2013	131,026	42,211	173,237	43,309	23,723	5,228	28,951	7,238	202,188
April 2013	136,709	45,396	182,105	45,526	23,738	6,313	30,051	7,513	212,156
March 2013	162,105	48,960	211,065	42,213	30,814	9,815	40,629	8,126	251,694
February 2013	115,609	33,933	149,542	37,386	33,082	8,796	41,878	10,470	191,420
January 2013	97,992	33,151	131,143	32,786	35,396	10,182	45,578	11,395	176,721
to date 2014	111,441	37,125	148,566	37,142	34,225	8,999	43,224	10,806	191,790
Total 2013	1,598,992	525,631	2,124,623	40,858	365,846	95,221	461,067	8,867	2,585,690

Grading								
	Weekly Totals				January 25, 2014			
	West	%	East	%	Canada 2014	%	Canada 2013	%
A - Prime	219	0.7 %	370	3.6 %	589	1.4 %	604	1.7 %
AAA	17,268	53.5 %	5,871	57.8 %	23,139	54.5 %	19,160	54.9 %
AA	14,133	43.8 %	3,322	32.7 %	17,455	41.1 %	14,040	40.3 %
A	452	1.4 %	231	2.3 %	683	1.6 %	478	1.4 %
B1, 2, 3, 4	224	0.7 %	371	3.6 %	595	1.4 %	599	1.7 %
Year-to-date								
	West	%	East	%	Canada 2014	%	Canada 2013	%
A - Prime	727	0.7 %	1,235	3.3 %	1,962	1.3 %	2,115	1.6 %
AAA	60,211	54.1 %	22,086	58.3 %	82,297	55.2 %	73,102	55.3 %
AA	48,337	43.4 %	12,149	32.1 %	60,486	40.6 %	52,946	40.0 %
A	1,242	1.1 %	1,063	2.8 %	2,305	1.5 %	1,886	1.4 %
B1, 2, 3, 4	734	0.7 %	1,354	3.6 %	2,088	1.4 %	2,233	1.7 %

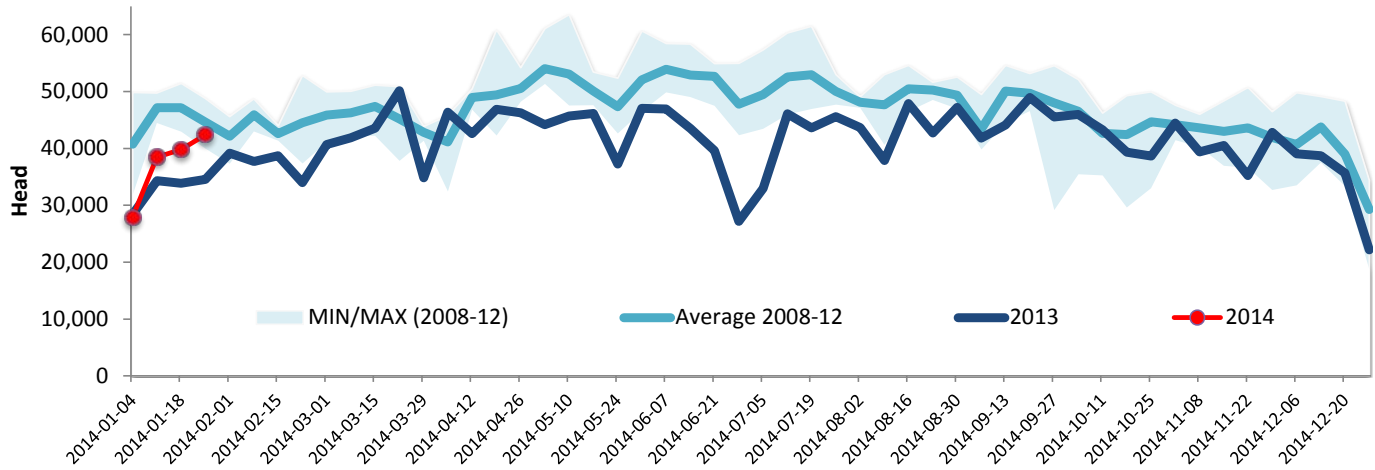
Source : Canadian Beef Grading Agency



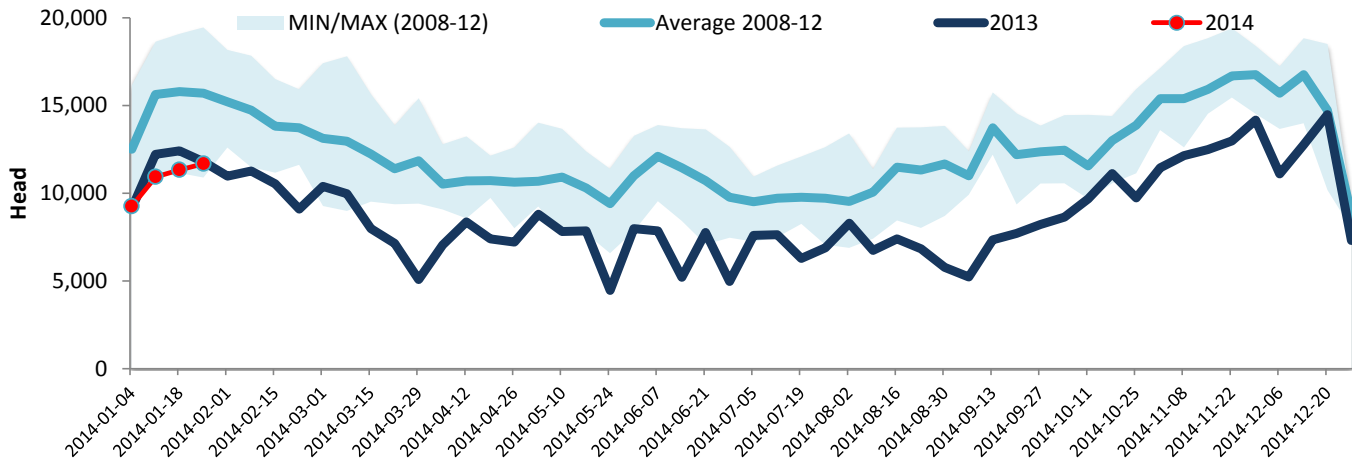
Year To Date for the Week Ending January 25, 2014

Federally Inspected Slaughter

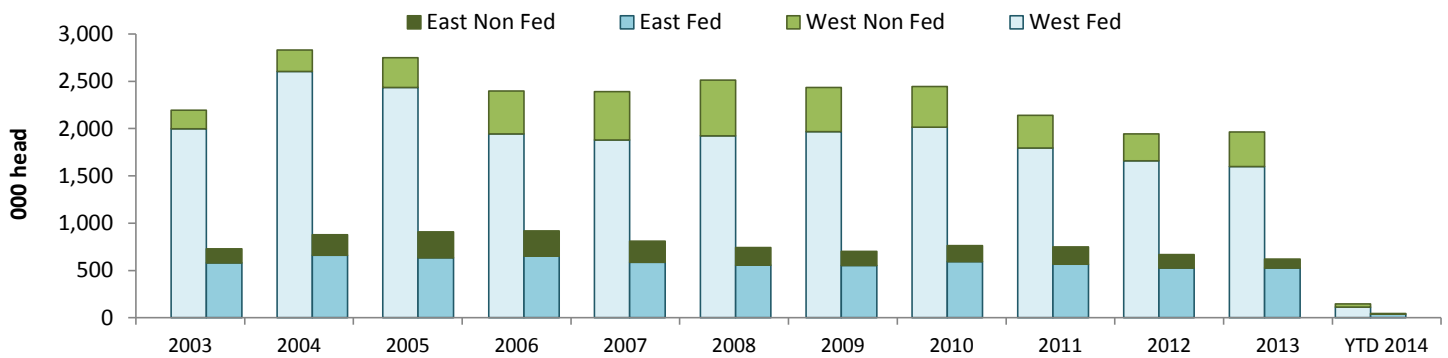
Canadian Fed Slaughter



Canadian Non-Fed Slaughter



Total Cattle Slaughter in Canada



Source : Canadian Beef Grading Agency