



Beef Supply at a Glance - CANADA

Year To Date for the Week Ending February 23, 2013

Federally Inspected Slaughter (head)	West			East			CANADA		
	2013	2012	% chg	2013	2012	% chg	2013	2012	% chg
Steers	137,255	147,564	-7 %	47,945	51,035	-6 %	185,200	198,599	-7 %
Heifers	76,346	107,103	-29 %	19,139	24,158	-21 %	95,485	131,261	-27 %
Cows	68,371	52,905	29 %	18,851	33,984	-45 %	87,222	86,889	0 %
Bulls	107	1,907	-94 %	127	575	-78 %	234	2,482	-91 %
Total	282,079	309,479	-9 %	86,062	109,752	-22 %	368,141	419,231	-12 %
Carcass Weight (lbs)									
Steers	881	881	0 %	905	884	2 %	887	882	1 %
Heifers	821	829	-1 %	815	798	2 %	819	823	0 %
Cows	682	704	-3 %	651	629	3 %	675	675	0 %
Bulls	897	1,025	-12 %	924	942	-2 %	911	1,006	-9 %
Beef Output (tonnes)									
Fed	83,455	99,451	-16 %	26,813	29,270	-8 %	110,216	128,724	-14 %
Non-Fed	21,239	17,818	19 %	5,632	9,963	-43 %	26,858	27,794	-3 %
Total	104,694	117,269	-11 %	32,444	39,232	-17 %	137,074	156,518	-12 %

Source: Canadian Beef Grading Agency

EXPORTS				IMPORTS			
For the period Jan. 1 - Feb. 16, 2013				For the period Jan. 1 - Dec. 31, 2012			
	2013	2012	% chg	(# of head)	2012	2011	% chg
Live Cattle				Live Cattle			
slaughter steers & heifers	44,598	44,807	0 %	pure bred	4,291	3,768	14 %
feeder steers & heifers	31,757	16,520	92 %	From U.S.	40,380	69,579	-42 %
cows & bulls	51,856	24,926	108 %	Total	44,671	73,347	-39 %
others*	2,275	915	149 %	Source: Statistics Canada			
Total	130,486	87,168	50 %	For the period Jan. 1 - Feb. 23, 2013			

* = breeding and others

Source: USDA - APHIS

Beef & Veal Exports to US			
(Tonnes)	2012	2011	% chg
Fresh/chilled cuts	164,736	218,188	-24 %
Frozen cuts	17,693	16,115	10 %
Offals	13,766	14,571	-6 %
Processed	1,183	1,075	10 %
TOTAL	197,378	249,949	-21 %
Exports (Jan. 1 - Dec. 31)		249,949	

Source: Statistics Canada

Beef and Veal			
(tonnes) preliminary	2013	2012	% chg
United States	28,608	21,884	31 %
New Zealand	2,001	5,373	-63 %
Australia	2,140	2,167	-1 %
Uruguay	3,627	2,308	57 %
Others	189	147	29 %
Total	36,565	31,879	15 %
Non-NAFTA Beef/Veal total	7,664	9,835	-22 %
Fresh, chilled & frozen (H.S. 0201, 0202)			

Source: CFIA

Beef & Veal Exports			
(Tonnes)	Jan. 1 to Dec. 31		
	2012	2011	% chg
United States	197,378	249,949	-21 %
Mexico	22,469	29,782	-25 %
Hong Kong	18,410	22,097	-17 %
Russia	6,283	8,146	-23 %
Japan	13,196	12,341	7 %
China	1,359	0	
Egypt	1,828	2,522	-28 %
South Korea	2,247	55	
Columbia	508	0	
Ghana	358	406	-12 %
Suriname	619	621	0 %
Ivory Coast	517	547	-6 %
Cuba	437	726	-40 %
Philippines	906	1,475	-39 %
Taiwan	372	1,077	-65 %
Others	4,162	5,741	-28 %
TOTAL	271,049	335,486	-19 %

Source: Statistics Canada

Beef & Veal Exports			
('000 \$ CDN)	Jan. 1 to Dec. 31		
	2012	2011	% chg
United States	875,606	956,656	-8 %
Mexico	111,476	141,069	-21 %
Hong Kong	78,227	91,918	-15 %
Japan	74,748	66,607	12 %
Russia	15,488	23,696	-35 %
South Korea	10,057	96	
China	4,645	0	
Cuba	3,485	5,226	-33 %
Egypt	3,254	4,224	-23 %
Suriname	2,636	2,370	11 %
Macedonia	1,964	4,332	-55 %
France	2,222	1,716	30 %
Taiwan	1,421	5,571	-74 %
Italy	2,335	2,309	1 %
Switzerland	1,962	1,171	68 %
Others	19,404	22,443	-14 %
TOTAL	1,208,932	1,329,405	-9 %

Source: Statistics Canada

**Year To Date for the Week Ending February 16, 2013**

	Weekly	2013	2012	% chg		Weekly	2013	2012	% chg
Slaughter ('000 head)					Carcass Weight (lbs)				
Steers	282.4	2,038.4	2,009.3	1 %	Steers	870	872	855	2 %
Heifers	182.2	1,217.4	1,253.9	-3 %	Heifers	810	806	793	2 %
Cows	121.9	868.0	895.1	-3 %	Cows	625	620	610	2 %
Bulls	9.4	63.6	68.3	-7 %	Bulls	880	882	866	2 %
Total	595.9	4,187.4	4,226.6	-1 %					
Total (Jan. To Dec. 2012)			32,336.9						

Source : USDA

Beef Output (tonnes)

Fed	1,253,902	1,232,861	2 %
Non-Fed	270,274	275,072	-2 %
Total	1,524,176	1,507,933	1 %
Total (Jan. To Dec. 2012)		11,615,011	

National Summary of Beef Graded

	Jan 2013	2012	2011
Prime	3.7 %	3.6 %	3.6 %
Choice	67.4 %	65.2 %	65.2 %
Select	28.6 %	30.8 %	30.7 %

Cattle Slaughter for the Week Ending

2013-02-16

	For the period Jan -Dec.	2012	2011	% chg		2013	2012	% chg
U.S. Beef and Veal Imports (carcass weight, ' 000 lbs)					Canada	49,234	53,248	-8 %
Canada	537,490	689,081	-22 %	US	595,900	610,300	-2 %	
Australia	654,523	452,043	45 %	Total Canada & US	645,134	663,548	-3 %	
New Zealand	495,460	456,795	8 %					
Other	531,727	458,606	16 %					
Total	2,219,200	2,056,525	8 %					

Cattle Slaughter Year to Date

Canada		325,073	368,756	-12 %
US		4,187,400	4,226,600	-1 %
Total Canada & US		4,512,473	4,595,356	-2 %

US Live Cattle Imports

Mexico - Feeder (Jan 1-Feb. 23, 2013)	172,522	263,344	-34 %
Canada (Jan. 1- Feb. 16, 2013)	130,486	87,168	50 %

Canada and United States Beef and Veal Tariff Rate Quota Summary**US Beef and Veal Tariff Rate Quota (TRQ) Summary**

YTD Week Ending Feb. 25, 2013	2013			2012		
Quota level	Tonnes entered	% filled	Tonnes entered	% filled	2013 VS 2012	
Australia	378,214	21,240	6 %	21,289	6 %	0 %
New Zealand	213,402	19,343	9 %	13,713	6 %	41 %
Argentina	20,000	0	0 %	0	0 %	
Uruguay	20,000	3,181	16 %	2,002	10 %	59 %
Japan	200	10	5 %	0	0 %	
Others	64,805	6,165	10 %	6,275	10 %	-2 %
Total TRQ	696,621	49,939	7 %	43,279	6 %	15 %
TRQ (Australia, New Zealand)	591,616	40,583	7 %	35,002	6 %	16 %
Canada	no limit	19,575	n/a	27,370	n/a	-28 %
Mexico	no limit	11,140	n/a	8,806	n/a	27 %

Canadian Beef and Veal Import Permits by Country

YTD Week Ending Feb. 25, 2013	2013	2012	% chg
Global quota (tonnes)	76,409	76,409	0 %
Supp. Quota Authorized	-	-	
Total quota	76,409	76,409	0 %
Permits issued			
New Zealand (29600 mt)	2,677	5,616	-52 %
Australia (35000 mt)	2,733	2,254	21 %
Uruguay	3,962	2,372	67 %
Japan	-	-	
Total	9,372	10,242	-8 %

Over quota tariff rate : 26.5 %

Canadian Beef and Veal Import Permits by Type of Meat

	2013		(tonnes)		Total Total (%)	
	Grinding Beef	Cuts	Total	Total	%	%
Japan	0	0	0	0	0 %	0 %
Australia	1,556	1,177	2,733	2,733	29 %	29 %
New Zealand	1,015	1,662	2,677	2,677	29 %	29 %
Uruguay	3,798	164	3,962	3,962	42 %	42 %
Total	6,369	3,003	9,372	9,372	100 %	100 %
YTD Feb. 25, 2013	Percentage of Total Imports					
	Grinding Beef		Cuts			
	2013	2012	2013	2012		
Australia	16.6 %	14.5 %	12.6 %	7.5 %		
New Zealand	10.8 %	20.8 %	17.7 %	34.1 %		
Argentina						
Uruguay	40.5 %	20.7 %	1.7 %	2.4 %		
Total	68.0 %	56.0 %	32.0 %	44.0 %		

Sources : Canadian Slaughter and Grading Data, CBGA, US Data: USDA, Canadian TRQ Data: DFAIT



Beef Supply at a Glance

Year To Date for the Week Ending February 23, 2013

Weekly Federally Inspected Slaughter

	Fed Slaughter				Non-fed Slaughter				Total Canada
	West	East	Canada	Weekly Avg.	West	East	Canada	Weekly Avg.	
2013-02-23	26,071	7,903	33,974		7,071	2,023	9,094		43,068
2013-02-16	30,036	8,665	38,701		8,454	2,079	10,533		49,234
2013-02-09	27,960	9,746	37,706		9,134	2,138	11,272		48,978
2013-02-02	31,542	7,619	39,161		8,423	2,556	10,979		50,140
2013-01-26	26,655	7,896	34,551		9,168	2,633	11,801		46,352
2013-01-19	24,617	9,278	33,895		9,329	3,092	12,421		46,316
2013-01-12	25,522	8,789	34,311		9,279	2,935	12,214		46,525
2013-01-05	21,198	7,188	28,386		7,620	1,522	9,142		37,528
December 2012	112,442	45,782	158,224	31,645	40,972	11,932	52,904	10,581	211,128
November 2012	110,962	44,226	155,188	38,797	21,653	9,536	31,189	7,797	186,377
October 2012	88,401	44,977	133,378	33,345	14,947	7,324	22,271	5,568	155,649
September 2012	155,560	52,350	207,910	41,582	18,398	8,020	26,418	5,284	234,328
August 2012	145,455	40,151	185,606	46,402	16,472	5,977	22,449	5,612	208,055
July 2012	144,623	39,432	184,055	46,014	20,769	7,061	27,830	6,958	211,885
June 2012	189,338	49,697	239,035	47,807	23,060	10,253	33,313	6,663	272,348
May 2012	151,522	40,598	192,120	48,030	18,765	13,246	32,011	8,003	224,131
April 2012	136,434	38,963	175,397	43,849	21,529	14,214	35,743	8,936	211,140
March 2012	170,035	54,134	224,169	44,834	33,164	19,548	52,712	10,542	276,881
February 2012	131,791	36,498	168,289	42,072	28,607	17,727	46,334	11,584	214,623
January 2012	122,876	38,695	161,571	40,393	26,205	16,832	43,037	10,759	204,608
to date 2013	213,601	67,084	280,685	35,086	68,478	18,978	87,456	10,932	368,141
Total 2012	1,659,439	525,503	2,184,942	42,018	284,541	141,670	426,211	8,196	2,611,153

Source : Canadian Beef Grading Agency

Grading								
	Weekly Totals				February 23, 2013			
	West	%	East	%	Canada 2013	%	Canada 2012	%
A - Prime	302	1.2 %	157	2.0 %	459	1.3 %	390	1.0 %
AAA	16,109	61.8 %	4,279	53.1 %	20,388	59.7 %	24,210	60.1 %
AA	9,284	35.6 %	2,997	37.2 %	12,281	36.0 %	14,709	36.5 %
A	194	0.7 %	328	4.1 %	522	1.5 %	444	1.1 %
B1, 2, 3, 4	187	0.7 %	290	3.6 %	477	1.4 %	505	1.3 %
Year-to-date								
	West	%	East	%	Canada 2013	%	Canada 2012	%
A - Prime	2,447	1.1 %	1,693	2.5 %	4,140	1.5 %	2,825	0.9 %
AAA	122,934	57.4 %	37,148	54.0 %	160,082	56.6 %	167,252	50.4 %
AA	85,186	39.8 %	24,796	36.1 %	109,982	38.9 %	151,798	45.7 %
A	1,875	0.9 %	2,028	2.9 %	3,903	1.4 %	5,359	1.6 %
B1, 2, 3, 4	1,573	0.7 %	3,083	4.5 %	4,656	1.6 %	4,826	1.5 %

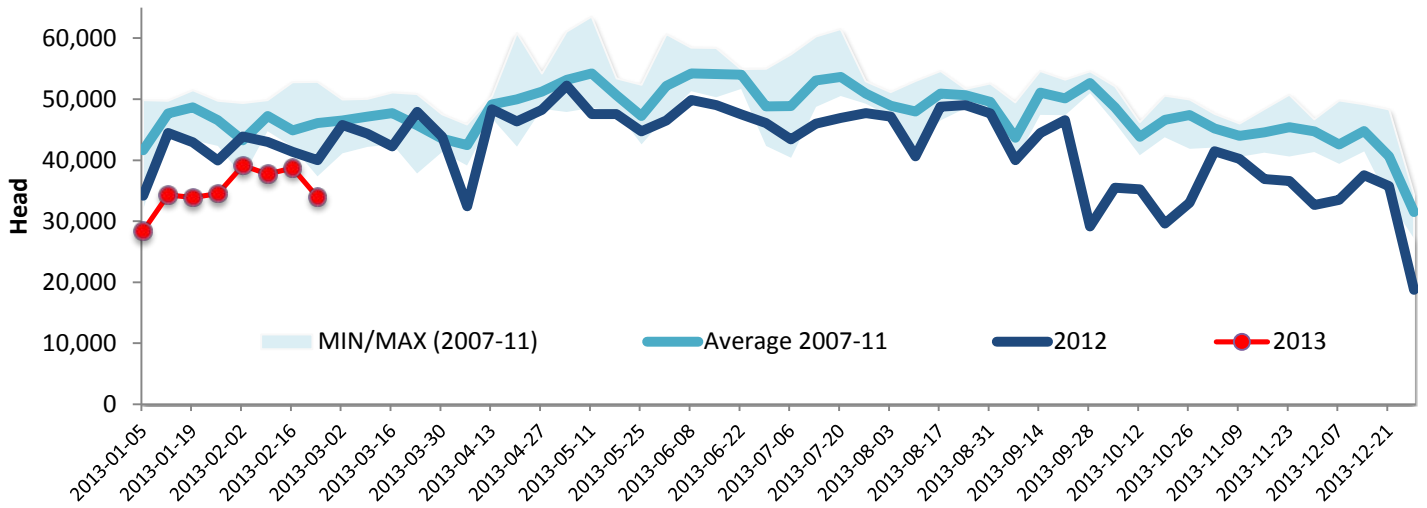
Source : Canadian Beef Grading Agency



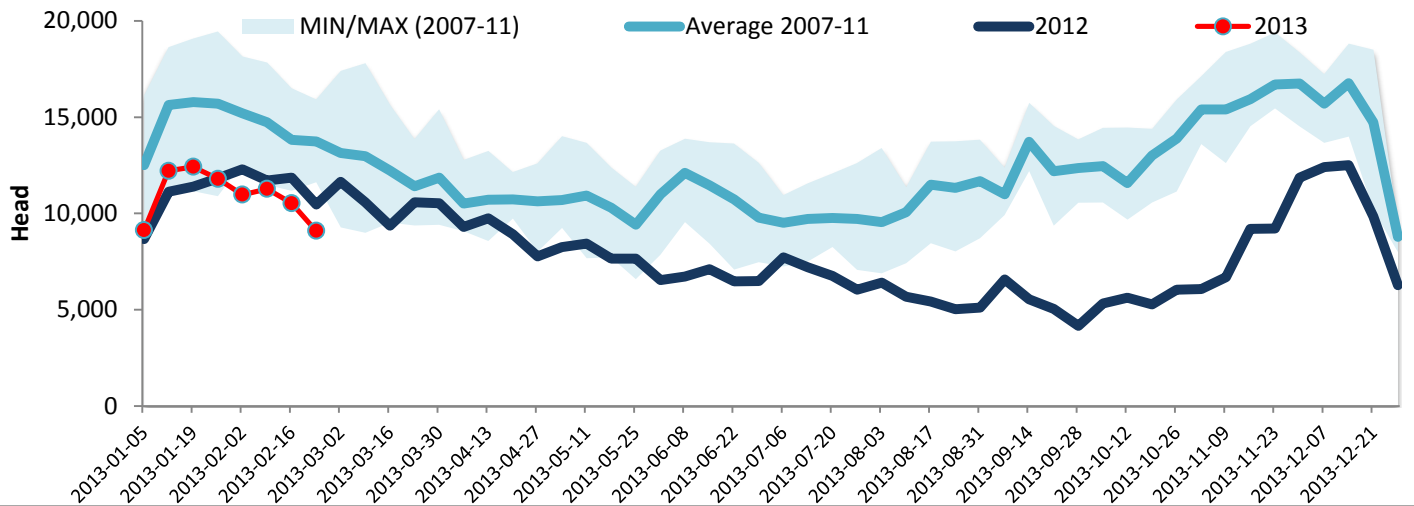
Year To Date for the Week Ending February 23, 2013

Federally Inspected Slaughter

Canadian Fed Slaughter



Canadian Non-Fed Slaughter



Total Cattle Slaughter in Canada

