



# Beef Supply at a Glance - CANADA

Year To Date for the Week Ending February 16, 2013

Federally Inspected Slaughter (head)	West			East			CANADA		
	2013	2012	% chg	2013	2012	% chg	2013	2012	% chg
Steers	121,519	131,221	-7 %	42,106	45,376	-7 %	163,625	176,597	-7 %
Heifers	66,011	91,714	-28 %	17,075	21,541	-21 %	83,086	113,255	-27 %
Cows	61,384	46,884	31 %	16,838	29,928	-44 %	78,222	76,812	2 %
Bulls	23	1,572	-99 %	117	520	-78 %	140	2,092	-93 %
<b>Total</b>	<b>248,937</b>	<b>271,391</b>	<b>-8 %</b>	<b>76,136</b>	<b>97,365</b>	<b>-22 %</b>	<b>325,073</b>	<b>368,756</b>	<b>-12 %</b>
<b>Carcass Weight (lbs)</b>									
Steers	880	880	0 %	905	883	2 %	886	881	1 %
Heifers	818	828	-1 %	815	798	2 %	817	822	-1 %
Cows	682	704	-3 %	650	628	4 %	675	675	0 %
Bulls	1,021	1,020	0 %	924	934	-1 %	941	999	-6 %
<b>Beef Output (tonnes)</b>									
Fed	73,152	87,006	-16 %	23,646	26,026	-9 %	96,751	113,035	-14 %
Non-Fed	19,040	15,732	21 %	5,024	8,764	-43 %	24,060	24,517	-2 %
<b>Total</b>	<b>92,191</b>	<b>102,738</b>	<b>-10 %</b>	<b>28,670</b>	<b>34,790</b>	<b>-18 %</b>	<b>120,811</b>	<b>137,553</b>	<b>-12 %</b>

Source: Canadian Beef Grading Agency

<b>EXPORTS</b>				<b>IMPORTS</b>				
For the period Jan. 1 - Feb. 9, 2013				For the period Jan. 1 - Dec. 31, 2012				
	2013	2012	% chg	(# of head)	2012	2011	% chg	
Live Cattle				Live Cattle	pure bred	4,291	3,768	14 %
slaughter steers & heifers	35,280	36,234	-3 %	From U.S.	non pure bred	40,380	69,579	-42 %
feeder steers & heifers	22,894	12,815	79 %	<b>Total</b>		<b>44,671</b>	<b>73,347</b>	<b>-39 %</b>
cows & bulls	42,792	20,797	106 %	Source: Statistics Canada				
others*	1,999	806	148 %	For the period Jan. 1 - Feb. 16, 2013				
<b>Total</b>	<b>102,965</b>	<b>70,652</b>	<b>46 %</b>	Beef and Veal	<b>2013</b>	<b>2012</b>	<b>% chg</b>	

\* = breeding and others

Source: USDA - APHIS

<b>Beef &amp; Veal Exports to US</b>			
(Tonnes)	2012	2011	% chg
Fresh/chilled cuts	164,736	218,188	-24 %
Frozen cuts	17,693	16,115	10 %
Offals	13,766	14,571	-6 %
Processed	1,183	1,075	10 %
<b>TOTAL</b>	<b>197,378</b>	<b>249,949</b>	<b>-21 %</b>
Exports (Jan. 1 - Dec. 31)		249,949	

Source: Statistics Canada

<b>Beef and Veal</b>			
(tonnes) preliminary	2013	2012	% chg
United States	25,101	19,745	27 %
New Zealand	1,787	3,858	-54 %
Australia	2,020	2,026	0 %
Uruguay	3,245	2,128	52 %
Others	137	129	6 %
<b>Total</b>	<b>32,290</b>	<b>27,887</b>	<b>16 %</b>
<b>Non-NAFTA Beef/Veal total</b>	<b>6,948</b>	<b>7,998</b>	<b>-13 %</b>
Fresh, chilled & frozen (H.S. 0201, 0202)			

Source: CFIA

<b>Beef &amp; Veal Exports</b>			
(Tonnes)	Jan. 1 to Dec. 31		
	2012	2011	% chg
United States	197,378	249,949	-21 %
Mexico	22,469	29,782	-25 %
Hong Kong	18,410	22,097	-17 %
Russia	6,283	8,146	-23 %
Japan	13,196	12,341	7 %
China	1,359	0	
Egypt	1,828	2,522	-28 %
South Korea	2,247	55	
Columbia	508	0	
Ghana	358	406	-12 %
Suriname	619	621	0 %
Ivory Coast	517	547	-6 %
Cuba	437	726	-40 %
Philippines	906	1,475	-39 %
Taiwan	372	1,077	-65 %
Others	4,162	5,741	-28 %
<b>TOTAL</b>	<b>271,049</b>	<b>335,486</b>	<b>-19 %</b>

Source: Statistics Canada

<b>Beef &amp; Veal Exports</b>			
('000 \$ CDN)	Jan. 1 to Dec. 31		
	2012	2011	% chg
United States	875,606	956,656	-8 %
Mexico	111,476	141,069	-21 %
Hong Kong	78,227	91,918	-15 %
Japan	74,748	66,607	12 %
Russia	15,488	23,696	-35 %
South Korea	10,057	96	
China	4,645	0	
Cuba	3,485	5,226	-33 %
Egypt	3,254	4,224	-23 %
Suriname	2,636	2,370	11 %
Macedonia	1,964	4,332	-55 %
France	2,222	1,716	30 %
Taiwan	1,421	5,571	-74 %
Italy	2,335	2,309	1 %
Switzerland	1,962	1,171	68 %
Others	19,404	22,443	-14 %
<b>TOTAL</b>	<b>1,208,932</b>	<b>1,329,405</b>	<b>-9 %</b>

Source: Statistics Canada

**Year To Date for the Week Ending February 9, 2013**

	Weekly	2013	2012	% chg		Weekly	2013	2012	% chg
<b>Slaughter ('000 head)</b>					<b>Carcass Weight (lbs)</b>				
Steers	284.0	1,756.0	1,724.5	2 %	Steers	868	872	855	2 %
Heifers	179.1	1,035.2	1,056.7	-2 %	Heifers	806	806	793	2 %
Cows	119.4	746.1	776.1	-4 %	Cows	621	620	608	2 %
Bulls	9.2	54.2	59.3	-8 %	Bulls	882	882	864	2 %
<b>Total</b>	<b>591.7</b>	<b>3,591.6</b>	<b>3,616.5</b>	<b>-1 %</b>					
<b>Total (Jan. To Dec. 2012)</b>			<b>32,336.9</b>						

Source : USDA

**Beef Output (tonnes)**

Fed	1,075,200	1,050,934	2 %
Non-Fed	231,921	237,735	-2 %
<b>Total</b>	<b>1,307,121</b>	<b>1,288,668</b>	<b>1 %</b>
<b>Total (Jan. To Dec. 2012)</b>		<b>11,615,011</b>	

**National Summary of Beef Graded**

	Jan 2013	2012	2011
Prime	3.7 %	3.6 %	3.6 %
Choice	67.4 %	65.2 %	65.2 %
Select	28.6 %	30.8 %	30.7 %

**Cattle Slaughter for the Week Ending**

2013-02-09

	2013	2012	% chg
Canada	48,978	54,725	-11 %
US	591,721	598,624	-1 %
<b>Total Canada &amp; US</b>	<b>640,699</b>	<b>653,349</b>	<b>-2 %</b>

**Cattle Slaughter Year to Date**

Canada	275,839	315,508	-13 %
US	3,591,612	3,616,502	-1 %
<b>Total Canada &amp; US</b>	<b>3,867,451</b>	<b>3,932,010</b>	<b>-2 %</b>

**US Live Cattle Imports**

Mexico - Feeder (Jan 1-Feb. 16, 2013)	134,572	221,502	-39 %
Canada (Jan. 1- Feb. 9, 2013)	102,965	70,652	46 %

**For the period Jan -Dec.**

	2012	2011	% chg
<b>U.S. Beef and Veal Imports (carcass weight, ' 000 lbs)</b>			
Canada	537,490	689,081	-22 %
Australia	654,523	452,043	45 %
New Zealand	495,460	456,795	8 %
Other	531,727	458,606	16 %
<b>Total</b>	<b>2,219,200</b>	<b>2,056,525</b>	<b>8 %</b>

**U.S. Beef and Veal Exports (carcass weight, ' 000 lbs)**

Mexico	351,799	488,001	-28 %
Canada	467,218	500,272	-7 %
Japan	449,602	456,265	-1 %
Other	1,186,040	1,340,287	-12 %
<b>Total</b>	<b>2,454,658</b>	<b>2,784,825</b>	<b>-12 %</b>

**Canada and United States Beef and Veal Tariff Rate Quota Summary****US Beef and Veal Tariff Rate Quota (TRQ) Summary**

YTD Week Ending Feb. 19, 2013	2013			2012		
Quota level	Tonnes entered	% filled	Tonnes entered	% filled	2013 VS 2012	
Australia	378,214	17,981	5 %	20,117	5%	-11 %
New Zealand	213,402	16,397	8 %	12,166	6%	35 %
Argentina	20,000	0	0 %	0	0%	
Uruguay	20,000	2,362	12 %	1,904	10%	24 %
Japan	200	7	3 %	0	0%	
Others	64,805	5,218	8 %	5,555	9%	-6 %
<b>Total TRQ</b>	<b>696,621</b>	<b>41,966</b>	<b>6 %</b>	<b>39,741</b>	<b>6%</b>	<b>6 %</b>
<b>TRQ (Australia, New Zealand)</b>	<b>591,616</b>	<b>34,379</b>	<b>6 %</b>	<b>32,282</b>	<b>5%</b>	<b>6 %</b>
Canada	no limit	16,393	n/a	22,569	n/a	-27 %
Mexico	no limit	9,564	n/a	7,217	n/a	33 %

**Canadian Beef and Veal Import Permits by Country**

YTD Week Ending Feb. 18, 2013	2013	2012	% chg
Global quota (tonnes)	76,409	76,409	0 %
Supp. Quota Authorized	-	-	
<b>Total quota</b>	<b>76,409</b>	<b>76,409</b>	<b>0 %</b>
Permits issued			
New Zealand (29600 mt)	2,189	4,022	-46 %
Australia (35000 mt)	2,639	2,087	26 %
Uruguay	3,759	2,139	76 %
Japan	-	-	
<b>Total</b>	<b>8,587</b>	<b>8,248</b>	<b>4 %</b>

Over quota tariff rate : 26.5 %

**Canadian Beef and Veal Import Permits by Type of Meat**

	2013 (tonnes)		Total Total (%)	
	Grinding Beef	Cuts	2013	2012
Japan	0	0	0	0 %
Australia	1,481	1,158	2,639	31 %
New Zealand	836	1,354	2,189	25 %
Uruguay	3,646	112	3,759	44 %
<b>Total</b>	<b>5,963</b>	<b>2,624</b>	<b>8,587</b>	<b>100 %</b>
YTD Feb. 18, 2013	Percentage of Total Imports			
	Grinding Beef		Cuts	
	2013	2012	2013	2012
Australia	17.2 %	16.8 %	13.5 %	8.5 %
New Zealand	9.7 %	17.7 %	15.8 %	31.1 %
Argentina				
Uruguay	42.5 %	22.9 %	1.3 %	3.0 %
<b>Total</b>	<b>69.4 %</b>	<b>57.3 %</b>	<b>30.6 %</b>	<b>42.7 %</b>

Sources : Canadian Slaughter and Grading Data, CBGA, US Data: USDA, Canadian TRQ Data: DFAIT



# Beef Supply at a Glance

Year To Date for the Week Ending February 16, 2013

## Weekly Federally Inspected Slaughter

	Fed Slaughter				Non-fed Slaughter				Total Canada
	West	East	Canada	Weekly Avg.	West	East	Canada	Weekly Avg.	
2013-02-16	30,036	8,665	38,701		8,454	2,079	10,533		49,234
2013-02-09	27,960	9,746	37,706		9,134	2,138	11,272		48,978
2013-02-02	31,542	7,619	39,161		8,423	2,556	10,979		50,140
2013-01-26	26,655	7,896	34,551		9,168	2,633	11,801		46,352
2013-01-19	24,617	9,278	33,895		9,329	3,092	12,421		46,316
2013-01-12	25,522	8,789	34,311		9,279	2,935	12,214		46,525
2013-01-05	21,198	7,188	28,386		7,620	1,522	9,142		37,528
December 2012	112,442	45,782	158,224	31,645	40,972	11,932	52,904	10,581	211,128
November 2012	110,962	44,226	155,188	38,797	21,653	9,536	31,189	7,797	186,377
October 2012	88,401	44,977	133,378	33,345	14,947	7,324	22,271	5,568	155,649
September 2012	155,560	52,350	207,910	41,582	18,398	8,020	26,418	5,284	234,328
August 2012	145,455	40,151	185,606	46,402	16,472	5,977	22,449	5,612	208,055
July 2012	144,623	39,432	184,055	46,014	20,769	7,061	27,830	6,958	211,885
June 2012	189,338	49,697	239,035	47,807	23,060	10,253	33,313	6,663	272,348
May 2012	151,522	40,598	192,120	48,030	18,765	13,246	32,011	8,003	224,131
April 2012	136,434	38,963	175,397	43,849	21,529	14,214	35,743	8,936	211,140
March 2012	170,035	54,134	224,169	44,834	33,164	19,548	52,712	10,542	276,881
February 2012	131,791	36,498	168,289	42,072	28,607	17,727	46,334	11,584	214,623
January 2012	122,876	38,695	161,571	40,393	26,205	16,832	43,037	10,759	204,608
to date 2013	187,530	59,181	246,711	35,244	61,407	16,955	78,362	11,195	325,073
Total 2012	1,659,439	525,503	2,184,942	42,018	284,541	141,670	426,211	8,196	2,611,153

Source : Canadian Beef Grading Agency

Grading	Weekly Totals February 16, 2013							
	West	%	East	%	Canada 2013	%	Canada 2012	%
A - Prime	279	0.9 %	154	1.7 %	433	1.1 %	327	0.8 %
AAA	18,696	62.1 %	4,495	50.9 %	23,191	59.5 %	22,823	54.7 %
AA	10,769	35.7 %	3,491	39.6 %	14,260	36.6 %	17,399	41.7 %
A	130	0.4 %	302	3.4 %	432	1.1 %	580	1.4 %
B1, 2, 3, 4	250	0.8 %	384	4.4 %	634	1.6 %	611	1.5 %
Grading	Year-to-date							
	West	%	East	%	Canada 2013	%	Canada 2012	%
A - Prime	2,145	1.1 %	1,536	2.5 %	3,681	1.5 %	2,435	0.8 %
AAA	106,825	56.8 %	32,869	54.2 %	139,694	56.2 %	143,042	49.0 %
AA	75,902	40.4 %	21,799	35.9 %	97,701	39.3 %	137,089	47.0 %
A	1,681	0.9 %	1,700	2.8 %	3,381	1.4 %	4,915	1.7 %
B1, 2, 3, 4	1,386	0.7 %	2,793	4.6 %	4,179	1.7 %	4,321	1.5 %

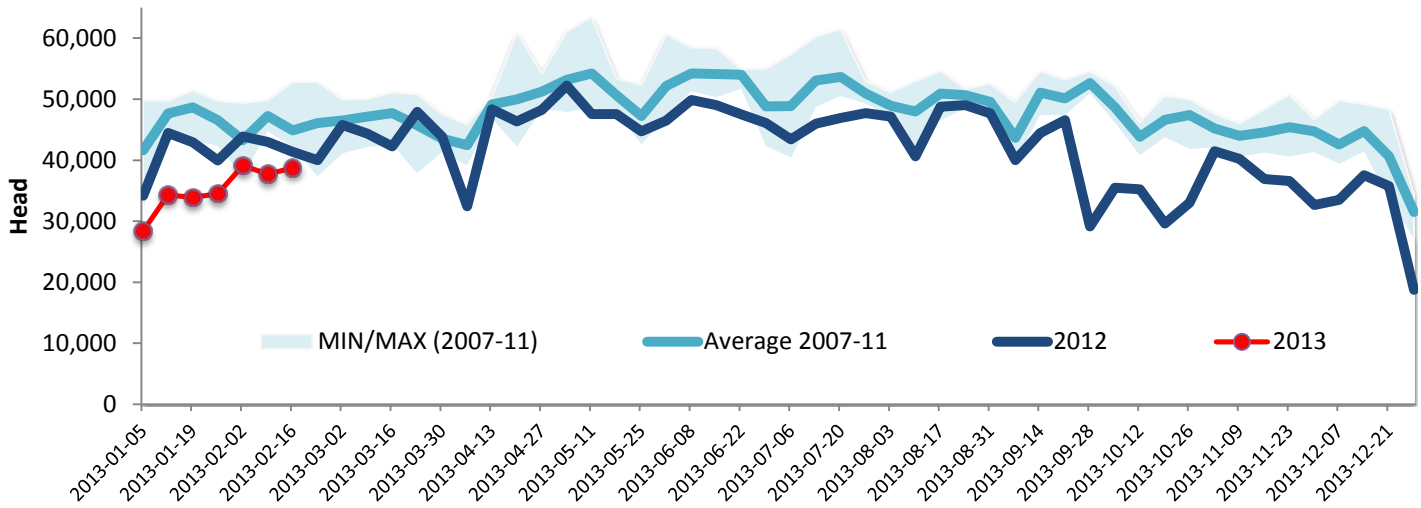
Source : Canadian Beef Grading Agency



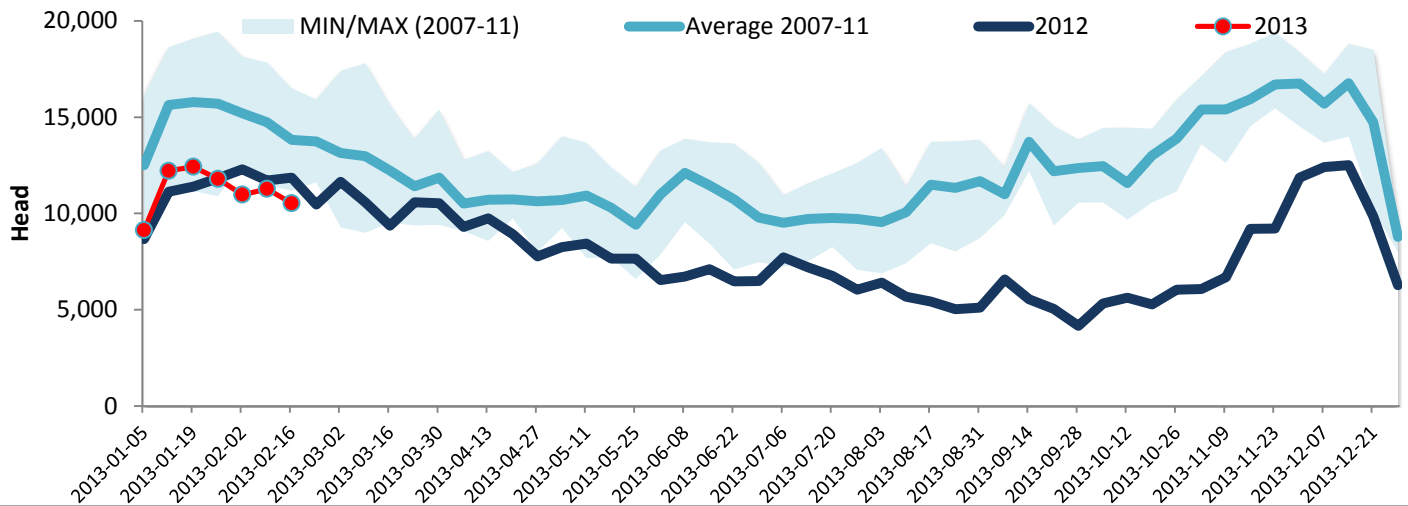
Year To Date for the Week Ending February 16, 2013

Federally Inspected Slaughter

### Canadian Fed Slaughter



### Canadian Non-Fed Slaughter



### Total Cattle Slaughter in Canada

