



# Beef Supply at a Glance - CANADA

Year To Date for the Week Ending February 9, 2013

Federally Inspected Slaughter (head)	West			East			CANADA		
	2013	2012	% chg	2013	2012	% chg	2013	2012	% chg
Steers	103,239	112,740	-8 %	35,861	39,639	-10 %	139,100	152,379	-9 %
Heifers	54,255	77,542	-30 %	14,655	18,553	-21 %	68,910	96,095	-28 %
Cows	52,953	39,958	33 %	14,773	25,527	-42 %	67,726	65,485	3 %
Bulls	0	1,084		103	465	-78 %	103	1,549	-93 %
<b>Total</b>	<b>210,447</b>	<b>231,324</b>	<b>-9 %</b>	<b>65,392</b>	<b>84,184</b>	<b>-22 %</b>	<b>275,839</b>	<b>315,508</b>	<b>-13 %</b>
<b>Carcass Weight (lbs)</b>									
Steers	879	881	0 %	906	883	3 %	886	881	1 %
Heifers	816	828	-1 %	818	797	3 %	816	822	-1 %
Cows	682	705	-3 %	648	629	3 %	675	676	0 %
Bulls	0	1,012		928	934	-1 %	928	988	-6 %
<b>Beef Output (tonnes)</b>									
Fed	61,372	74,331	-17 %	20,217	22,631	-11 %	81,579	96,925	-16 %
Non-Fed	16,415	13,303	23 %	4,395	7,496	-41 %	20,823	20,817	0 %
<b>Total</b>	<b>77,788</b>	<b>87,635</b>	<b>-11 %</b>	<b>24,612</b>	<b>30,127</b>	<b>-18 %</b>	<b>102,402</b>	<b>117,743</b>	<b>-13 %</b>

Source: Canadian Beef Grading Agency

<b>EXPORTS</b>				<b>IMPORTS</b>			
For the period Jan. 1 - Feb. 2, 2013				For the period Jan. 1 - Dec. 31, 2012			
Live Cattle	2013	2012	% chg	(# of head)	2012	2011	% chg
slaughter steers & heifers	28,293	29,750	-5 %	Live Cattle pure bred	4,291	3,768	14 %
feeder steers & heifers	15,059	9,416	60 %	From U.S. non pure bred	40,380	69,579	-42 %
cows & bulls	35,496	16,898	110 %	<b>Total</b>	<b>44,671</b>	<b>73,347</b>	<b>-39 %</b>
others*	1,689	787	115 %	Source: Statistics Canada			
<b>Total</b>	<b>80,537</b>	<b>56,851</b>	<b>42 %</b>	For the period Jan. 1 - Feb. 9, 2013			

\* = breeding and others

Source: USDA - APHIS

<b>Beef &amp; Veal Exports to US</b>			
(Tonnes)	2012	2011	% chg
Fresh/chilled cuts	164,736	218,188	-24 %
Frozen cuts	17,693	16,115	10 %
Offals	13,766	14,571	-6 %
Processed	1,183	1,075	10 %
<b>TOTAL</b>	<b>197,378</b>	<b>249,949</b>	<b>-21 %</b>
Exports (Jan. 1 - Dec. 31)		249,949	

Source: Statistics Canada

<b>Beef and Veal</b>			
(tonnes) preliminary	2013	2012	% chg
United States	21,681	16,827	29 %
New Zealand	1,531	3,378	-55 %
Australia	1,767	1,868	-5 %
Uruguay	2,670	1,783	50 %
Others	86	109	-21 %
<b>Total</b>	<b>27,735</b>	<b>23,965</b>	<b>16 %</b>
<b>Non-NAFTA Beef/Veal total</b>	<b>6,053</b>	<b>7,137</b>	<b>-15 %</b>
Fresh, chilled & frozen (H.S. 0201, 0202)			

Source: CFIA

<b>Beef &amp; Veal Exports</b>			
(Tonnes)	Jan. 1 to Dec. 31		
	2012	2011	% chg
United States	197,378	249,949	-21 %
Mexico	22,469	29,782	-25 %
Hong Kong	18,410	22,097	-17 %
Russia	6,283	8,146	-23 %
Japan	13,196	12,341	7 %
China	1,359	0	
Egypt	1,828	2,522	-28 %
South Korea	2,247	55	
Columbia	508	0	
Ghana	358	406	-12 %
Suriname	619	621	0 %
Ivory Coast	517	547	-6 %
Cuba	437	726	-40 %
Philippines	906	1,475	-39 %
Taiwan	372	1,077	-65 %
Others	4,162	5,741	-28 %
<b>TOTAL</b>	<b>271,049</b>	<b>335,486</b>	<b>-19 %</b>

Source: Statistics Canada

<b>Beef &amp; Veal Exports</b>			
('000 \$ CDN)	Jan. 1 to Dec. 31		
	2012	2011	% chg
United States	875,606	956,656	-8 %
Mexico	111,476	141,069	-21 %
Hong Kong	78,227	91,918	-15 %
Japan	74,748	66,607	12 %
Russia	15,488	23,696	-35 %
South Korea	10,057	96	
China	4,645	0	
Cuba	3,485	5,226	-33 %
Egypt	3,254	4,224	-23 %
Suriname	2,636	2,370	11 %
Macedonia	1,964	4,332	-55 %
France	2,222	1,716	30 %
Taiwan	1,421	5,571	-74 %
Italy	2,335	2,309	1 %
Switzerland	1,962	1,171	68 %
Others	19,404	22,443	-14 %
<b>TOTAL</b>	<b>1,208,932</b>	<b>1,329,405</b>	<b>-9 %</b>

Source: Statistics Canada



## Year To Date for the Week Ending February 2, 2013

	Weekly	2013	2012	% chg		Weekly	2013	2012	% chg
<b>Slaughter ('000 head)</b>					<b>Carcass Weight (lbs)</b>				
Steers	305.8	1,472.1	1,448.5	2 %	Steers	872	873	855	2 %
Heifers	180.3	856.1	868.2	-1 %	Heifers	808	806	793	2 %
Cows	123.3	626.7	651.8	-4 %	Cows	620	619	605	2 %
Bulls	9.3	45.1	49.5	-9 %	Bulls	882	882	861	3 %
<b>Total</b>	<b>618.7</b>	<b>2,999.9</b>	<b>3,017.9</b>	<b>-1 %</b>					
<b>Total (Jan. To Dec. 2012)</b>			<b>32,336.9</b>						

Source : USDA

<b>Beef Output (tonnes)</b>				<b>National Summary of Beef Graded</b>				
Fed		897,568	875,656	3 %	<b>Dec 2012</b>	<b>2011</b>	<b>2010</b>	
Non-Fed		194,513	198,707	-2 %	Prime	3.8 %	3.6 %	3.4 %
<b>Total</b>		<b>1,092,082</b>	<b>1,074,363</b>	<b>2 %</b>	Choice	64.8 %	65.4 %	64.7 %
<b>Total (Jan. To Dec. 2012)</b>			<b>11,615,011</b>		Select	31.1 %	30.6 %	31.3 %

<b>For the period Jan -Dec.</b>				<b>Cattle Slaughter for the Week Ending</b>			
	<b>2012</b>	<b>2011</b>	<b>% chg</b>		<b>2013</b>	<b>2012</b>	<b>% chg</b>
<b>U.S. Beef and Veal Imports (carcass weight, ' 000 lbs)</b>				Canada	50,140	56,175	-11 %
Canada	537,490	689,081	-22 %	US	618,674	591,045	5 %
Australia	654,523	452,043	45 %	<b>Total Canada &amp; US</b>	<b>668,814</b>	<b>647,220</b>	<b>3 %</b>
New Zealand	495,460	456,795	8 %				
Other	531,727	458,606	16 %	<b>Cattle Slaughter Year to Date</b>			
<b>Total</b>	<b>2,219,200</b>	<b>2,056,525</b>	<b>8 %</b>	Canada	226,861	260,783	-13 %

<b>U.S. Beef and Veal Exports (carcass weight, ' 000 lbs)</b>				<b>US Live Cattle Imports</b>			
Mexico	351,799	488,001	-28 %	Mexico - Feeder (Jan 1-Feb. 9, 2013)	114,277	192,898	-41 %
Canada	467,218	500,272	-7 %	Canada (Jan. 1- Feb. 2, 2013)	80,537	56,851	42 %
Japan	449,602	456,265	-1 %				
Other	1,186,040	1,340,287	-12 %				
<b>Total</b>	<b>2,454,658</b>	<b>2,784,825</b>	<b>-12 %</b>				

## Canada and United States Beef and Veal Tariff Rate Quota Summary

<b>US Beef and Veal Tariff Rate Quota (TRQ) Summary</b>							
YTD Week Ending Feb. 11, 2013		<b>2013</b>			<b>2012</b>		
	Quota level	Tonnes entered	% filled	Tonnes entered	% filled	2013 VS 2012	
Australia	378,214	15,173	4 %	14,096	4 %	8 %	
New Zealand	213,402	13,414	6 %	9,442	4 %	42 %	
Argentina	20,000	0	0 %	0	0 %		
Uruguay	20,000	1,445	7 %	1,434	7 %	1 %	
Japan	200	7	3 %	0	0 %		
Others	64,805	4,161	6 %	4,526	7 %	-8 %	
<b>Total TRQ</b>	<b>696,621</b>	<b>34,200</b>	<b>5 %</b>	<b>29,498</b>	<b>4 %</b>	<b>16 %</b>	
<b>TRQ (Australia, New Zealand)</b>	<b>591,616</b>	<b>28,587</b>	<b>5 %</b>	<b>23,538</b>	<b>4 %</b>	<b>21 %</b>	
Canada	no limit	12,635	n/a	17,927	n/a	-30 %	
Mexico	no limit	7,821	n/a	5,780	n/a	35 %	

<b>Canadian Beef and Veal Import Permits by Country</b>				<b>Canadian Beef and Veal Import Permits by Type of Meat</b>				
YTD Week Ending Feb. 11, 2013		<b>2013</b>			<b>2013 (tonnes)</b>			
	2013	2012	% chg		Grinding Beef	Cuts	<b>Total Total (%)</b>	
Global quota (tonnes)	76,409	76,409	0 %	Japan	0	0	<b>0</b>	<b>0 %</b>
Supp. Quota Authorized	-	-		Australia	1,329	1,074	<b>2,403</b>	<b>30 %</b>
<b>Total quota</b>	<b>76,409</b>	<b>76,409</b>	<b>0 %</b>	New Zealand	742	1,226	<b>1,968</b>	<b>25 %</b>
Permits issued				Uruguay	3,484	99	<b>3,583</b>	<b>45 %</b>
New Zealand (29600 mt)	1,968	3,480	-43 %	<b>Total</b>	<b>5,555</b>	<b>2,399</b>	<b>7,954</b>	<b>100 %</b>
Australia (35000 mt)	2,403	1,954	23 %	YTD Feb. 11, 2013	<b>Percentage of Total Imports</b>			
Uruguay	3,583	1,910	88 %		<b>Grinding Beef</b>	<b>Cuts</b>		
Japan	-	-			2013	2012	2013	2012
<b>Total</b>	<b>7,954</b>	<b>7,344</b>	<b>8 %</b>	Australia	16.7 %	17.0 %	13.5 %	9.6 %
Over quota tariff rate : 26.5 %				New Zealand	9.3 %	17.6 %	15.4 %	29.8 %
				Argentina				
				Uruguay	43.8 %	23.0 %	1.2 %	3.0 %
				<b>Total</b>	<b>69.8 %</b>	<b>57.7 %</b>	<b>30.2 %</b>	<b>42.3 %</b>

Sources : Canadian Slaughter and Grading Data, CBGA, US Data: USDA, Canadian TRQ Data: DFAIT



# Beef Supply at a Glance

Year To Date for the Week Ending February 9, 2013

## Weekly Federally Inspected Slaughter

	Fed Slaughter				Non-fed Slaughter				Total Canada
	West	East	Canada	Weekly Avg.	West	East	Canada	Weekly Avg.	
2013-02-09	27,960	9,746	37,706		9,134	2,138	11,272		48,978
2013-02-02	31,542	7,619	39,161		8,423	2,556	10,979		50,140
2013-01-26	26,655	7,896	34,551		9,168	2,633	11,801		46,352
2013-01-19	24,617	9,278	33,895		9,329	3,092	12,421		46,316
2013-01-12	25,522	8,789	34,311		9,279	2,935	12,214		46,525
2013-01-05	21,198	7,188	28,386		7,620	1,522	9,142		37,528
December 2012	112,442	45,782	158,224	31,645	40,972	11,932	52,904	10,581	211,128
November 2012	110,962	44,226	155,188	38,797	21,653	9,536	31,189	7,797	186,377
October 2012	88,401	44,977	133,378	33,345	14,947	7,324	22,271	5,568	155,649
September 2012	155,560	52,350	207,910	41,582	18,398	8,020	26,418	5,284	234,328
August 2012	145,455	40,151	185,606	46,402	16,472	5,977	22,449	5,612	208,055
July 2012	144,623	39,432	184,055	46,014	20,769	7,061	27,830	6,958	211,885
June 2012	189,338	49,697	239,035	47,807	23,060	10,253	33,313	6,663	272,348
May 2012	151,522	40,598	192,120	48,030	18,765	13,246	32,011	8,003	224,131
April 2012	136,434	38,963	175,397	43,849	21,529	14,214	35,743	8,936	211,140
March 2012	170,035	54,134	224,169	44,834	33,164	19,548	52,712	10,542	276,881
February 2012	131,791	36,498	168,289	42,072	28,607	17,727	46,334	11,584	214,623
January 2012	122,876	38,695	161,571	40,393	26,205	16,832	43,037	10,759	204,608
to date 2013	157,494	50,516	208,010	34,668	52,953	14,876	67,829	11,305	275,839
Total 2012	1,659,439	525,503	2,184,942	42,018	284,541	141,670	426,211	8,196	2,611,153

Source : Canadian Beef Grading Agency

Grading								
	Weekly Totals				February 9, 2013			
	West	%	East	%	Canada 2013	%	Canada 2012	%
A - Prime	262	0.9 %	322	3.2 %	584	1.5 %	401	0.9 %
AAA	15,969	57.0 %	5,456	54.9 %	21,425	56.5 %	22,746	52.5 %
AA	11,344	40.5 %	3,385	34.1 %	14,729	38.8 %	18,818	43.4 %
A	228	0.8 %	335	3.4 %	563	1.5 %	725	1.7 %
B1, 2, 3, 4	191	0.7 %	441	4.4 %	632	1.7 %	651	1.5 %
Year-to-date								
	West	%	East	%	Canada 2013	%	Canada 2012	%
A - Prime	1,866	1.2 %	1,382	2.7 %	3,248	1.5 %	2,108	0.8 %
AAA	88,129	55.8 %	28,374	54.7 %	116,503	55.6 %	120,219	48.1 %
AA	65,133	41.3 %	18,308	35.3 %	83,441	39.8 %	119,690	47.9 %
A	1,551	1.0 %	1,398	2.7 %	2,949	1.4 %	4,335	1.7 %
B1, 2, 3, 4	1,136	0.7 %	2,409	4.6 %	3,545	1.7 %	3,710	1.5 %

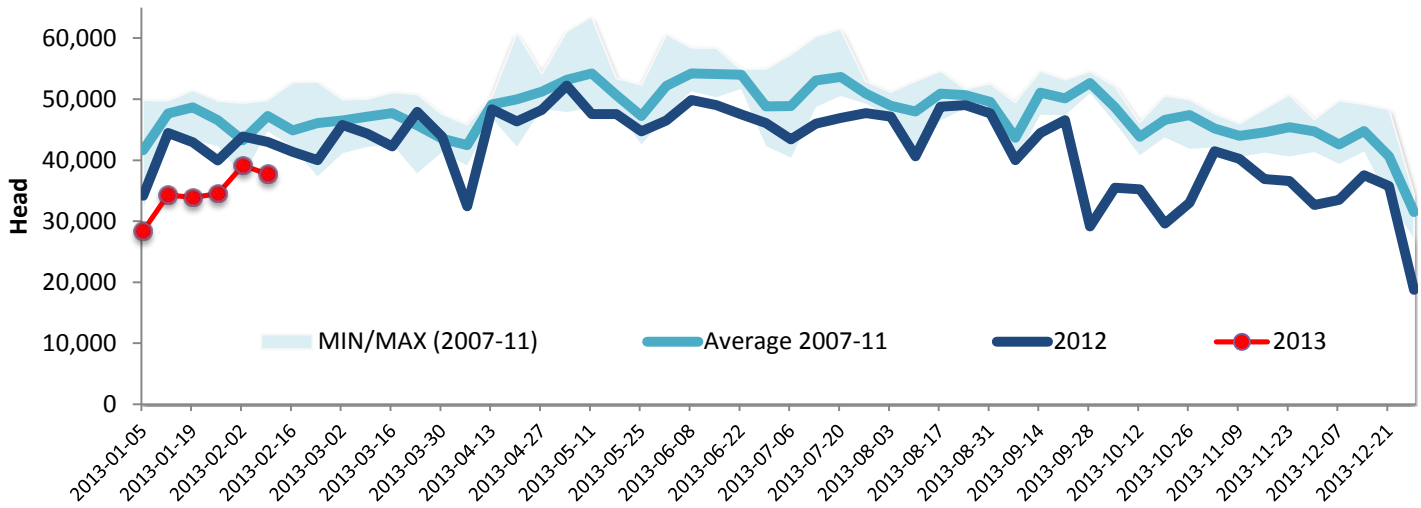
Source : Canadian Beef Grading Agency



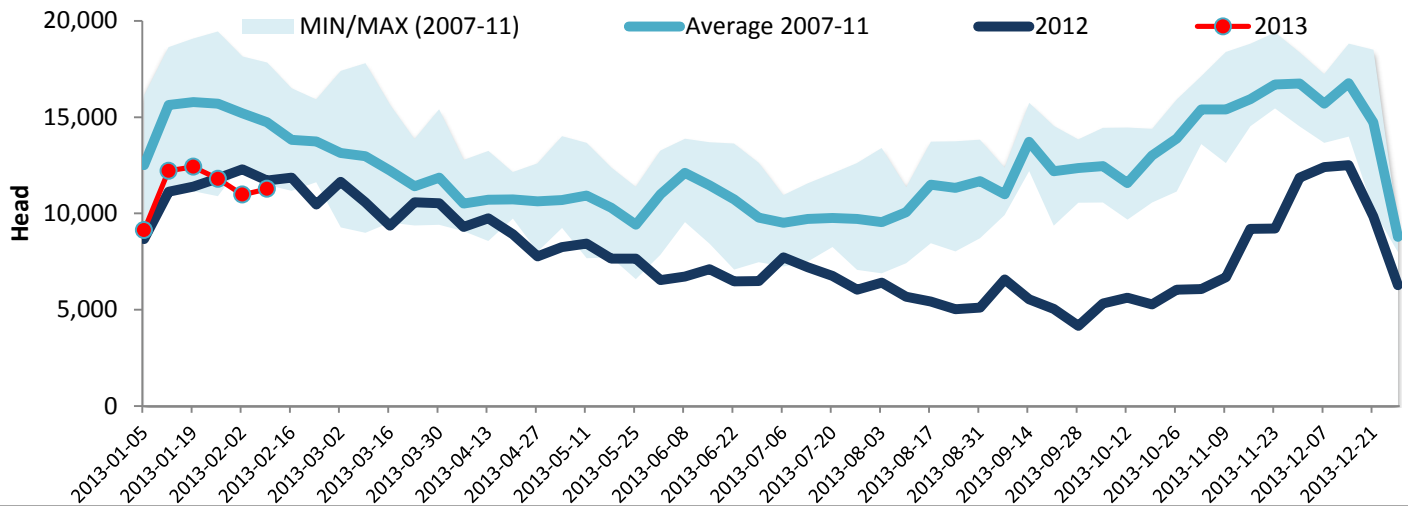
Year To Date for the Week Ending February 9, 2013

Federally Inspected Slaughter

### Canadian Fed Slaughter



### Canadian Non-Fed Slaughter



### Total Cattle Slaughter in Canada

