



Beef Supply at a Glance - CANADA

Year To Date for the Week Ending February 2, 2013

Federally Inspected Slaughter (head)	West			East			CANADA		
	2013	2012	% chg	2013	2012	% chg	2013	2012	% chg
Steers	83,594	95,401	-12 %	28,681	32,729	-12 %	112,275	128,130	-12 %
Heifers	45,940	61,872	-26 %	12,089	15,457	-22 %	58,029	77,329	-25 %
Cows	43,819	33,192	32 %	12,661	20,965	-40 %	56,480	54,157	4 %
Bulls	0	776		77	391	-80 %	77	1,167	-93 %
Total	173,353	191,241	-9 %	53,508	69,542	-23 %	226,861	260,783	-13 %
Carcass Weight (lbs)									
Steers	878	880	0 %	905	883	2 %	885	881	0 %
Heifers	818	824	-1 %	820	795	3 %	818	819	0 %
Cows	682	706	-3 %	648	630	3 %	675	677	0 %
Bulls	0	1,006		917	934	-2 %	917	982	-7 %
Beef Output (tonnes)									
Fed	50,443	61,334	-18 %	16,304	18,722	-13 %	66,741	80,098	-17 %
Non-Fed	13,584	11,006	23 %	3,761	6,170	-39 %	17,361	17,186	1 %
Total	64,027	72,341	-11 %	20,066	24,891	-19 %	84,103	97,284	-14 %

Source: Canadian Beef Grading Agency

EXPORTS	For the period Jan. 1 - Jan. 26, 2013		
	2013	2012	% chg
Live Cattle			
slaughter steers & heifers	22,268	23,483	-5 %
feeder steers & heifers	8,799	7,692	14 %
cows & bulls	27,832	12,847	117 %
others*	1,307	621	110 %
Total	60,206	44,643	35 %

* = breeding and others

Source: USDA - APHIS

Beef & Veal Exports to US	2012	2011	% chg
(Tonnes) Jan. 1 - Nov. 30			
Fresh/chilled cuts	156,854	201,482	-22 %
Frozen cuts	15,255	14,833	3 %
Offals	13,019	13,498	-4 %
Processed	1,074	955	12 %
TOTAL	186,202	230,768	-19 %
Exports (Jan. 1 - Dec. 31)		249,949	

Source: Statistics Canada

IMPORTS	For the period Jan. 1 - Nov. 30, 2012		
	2012	2011	% chg
(# of head)			
Live Cattle pure bred	4,269	3,467	23 %
From U.S. non pure bred	37,669	64,827	-42 %
Total	41,938	68,294	-39 %

Source: Statistics Canada

	For the period Jan. 1 - Feb. 2, 2013		
	2013	2012	% chg
Beef and Veal			
(tonnes) preliminary			
United States	17,775	14,170	25 %
New Zealand	1,161	2,650	-56 %
Australia	1,404	1,698	-17 %
Uruguay	2,326	1,448	61 %
Others	52	57	-9 %
Total	22,717	20,023	13 %
Non-NAFTA Beef/Veal total	4,942	5,853	-16 %
Fresh, chilled & frozen (H.S. 0201, 0202)			

Source: CFIA

Beef & Veal Exports	Jan. 1 to Nov. 30		
(Tonnes)	2012	2011	% chg
United States	186,202	230,768	-19 %
Mexico	21,922	27,522	-20 %
Hong Kong	16,799	20,063	-16 %
Russia	6,254	7,797	-20 %
Japan	11,954	11,027	8 %
China	935	0	
Egypt	1,618	2,306	-30 %
South Korea	1,970	33	
Columbia	505	0	
Ghana	358	406	-12 %
Suriname	619	595	4 %
Ivory Coast	416	442	-6 %
Cuba	335	695	-52 %
Philippines	906	1,438	-37 %
Taiwan	348	959	-64 %
Others	3,471	5,352	-35 %
TOTAL	254,613	309,403	-18 %

Source: Statistics Canada

Beef & Veal Exports	Jan. 1 to Nov. 30		
('000 \$ CDN)	2012	2011	% chg
United States	827,264	874,714	-5 %
Mexico	108,325	129,640	-16 %
Hong Kong	68,444	82,924	-17 %
Japan	69,103	58,452	18 %
Russia	15,462	22,761	-32 %
South Korea	8,897	75	
China	3,291	0	
Cuba	2,930	5,005	-41 %
Egypt	3,023	3,862	-22 %
Suriname	2,636	2,235	18 %
Macedonia	1,905	4,297	-56 %
France	1,967	1,429	38 %
Taiwan	1,366	4,899	-72 %
Italy	2,116	2,296	-8 %
Switzerland	1,844	930	98 %
Others	15,597	20,789	-25 %
TOTAL	1,134,170	1,214,308	-7 %

Source: Statistics Canada



Year To Date for the Week Ending January 26, 2013

	Weekly	2013	2012	% chg		Weekly	2013	2012	% chg
Slaughter ('000 head)					Carcass Weight (lbs)				
Steers	305.4	1,166.2	1,162.0	0 %	Steers	873	873	854	2 %
Heifers	183.6	675.8	702.2	-4 %	Heifers	809	805	792	2 %
Cows	125.6	503.4	523.4	-4 %	Cows	618	619	604	3 %
Bulls	9.8	35.8	39.2	-9 %	Bulls	875	883	860	3 %
Total	624.3	2,381.2	2,426.8	-2 %					
Total (Jan. To Dec. 2012)			32,336,888						

Source : USDA

Beef Output (tonnes)		2013	2012	% chg
Fed		710,149	703,558	1 %
Non-Fed		156,066	158,886	-2 %
Total		866,215	862,445	0 %
Total (Jan. To Dec. 2012)			11,615,011	

National Summary of Beef Graded			
	Dec 2012	2011	2010
Prime	3.8 %	3.6 %	3.4 %
Choice	64.8 %	65.4 %	64.7 %
Select	31.1 %	30.6 %	31.3 %

	For the period Jan -Nov.	2012	2011	% chg
U.S. Beef and Veal Imports (carcass weight, ' 000 lbs)				
Canada		507,692	636,178	-20 %
Australia		604,199	412,557	46 %
New Zealand		461,753	433,275	7 %
Other		483,301	418,039	16 %
Total		2,056,945	1,900,049	8 %

Cattle Slaughter for the Week Ending			
	2013	2012	% chg
Canada	46,352	51,806	-11 %
US	624,349	600,999	4 %
Total Canada & US	670,701	652,805	3 %

U.S. Beef and Veal Exports (carcass weight, ' 000 lbs)		2012	2011	% chg
Mexico		327,105	450,517	-27 %
Canada		420,220	455,221	-8 %
Japan		422,827	425,271	-1 %
Other		1,087,145	1,223,978	-11 %
Total		2,257,297	2,554,986	-12 %

Cattle Slaughter Year to Date			
Canada	176,721	204,608	-14 %
US	2,381,217	2,426,833	-2 %
Total Canada & US	2,557,938	2,631,441	-3 %

US Live Cattle Imports			
Mexico - Feeder (Jan 1-Feb. 2, 2013)	81,501	155,379	-48 %
Canada (Jan. 1- Jan. 26, 2013)	60,206	44,643	35 %

Canada and United States Beef and Veal Tariff Rate Quota Summary

US Beef and Veal Tariff Rate Quota (TRQ) Summary							
YTD Week Ending Feb. 4, 2013	2013			2012			2013 VS 2012
Quota level	Tonnes entered	% filled	Tonnes entered	% filled			
Australia	378,214	11,400	3 %	12,669	3%		-10 %
New Zealand	213,402	8,982	4 %	7,914	4%		13 %
Argentina	20,000	0	0 %	0	0%		
Uruguay	20,000	1,009	5 %	1,203	6%		-16 %
Japan	200	6	3 %	0	0%		
Others	64,805	3,245	5 %	3,640	6%		-11 %
Total TRQ	696,621	24,642	4 %	25,426	4%		-3 %
TRQ (Australia, New Zealand)	591,616	20,382	3 %	20,583	3%		-1 %
Canada	no limit	8,893	n/a	13,258	n/a		-33 %
Mexico	no limit	5,438	n/a	4,418	n/a		23 %

Canadian Beef and Veal Import Permits by Country			
YTD Week Ending Feb. 4, 2013	2013	2012	% chg
Global quota (tonnes)	76,409	76,409	0 %
Supp. Quota Authorized	-	-	
Total quota	76,409	76,409	0 %
Permits issued			
New Zealand (29600 mt)	1,709	2,808	-39 %
Australia (35000 mt)	2,284	1,723	33 %
Uruguay	3,049	1,573	94 %
Japan	-	-	
Total	7,042	6,104	15 %

Canadian Beef and Veal Import Permits by Type of Meat					
2013		(tonnes)		Total Total (%)	
	Grinding Beef	Cuts			
Japan	0	0	0	0 %	
Australia	1,267	1,017	2,284	32 %	
New Zealand	659	1,050	1,709	24 %	
Uruguay	2,976	73	3,049	43 %	
Total	4,902	2,140	7,042	100 %	
YTD Feb. 4, 2013					
Percentage of Total Imports					
	Grinding Beef		Cuts		
	2013	2012	2013	2012	
Australia	18.0 %	17.8 %	14.4 %	10.4 %	
New Zealand	9.4 %	18.5 %	14.9 %	27.5 %	
Argentina					
Uruguay	42.3 %	22.2 %	1.0 %	3.6 %	
Total	69.6 %	58.5 %	30.4 %	41.5 %	

Sources : Canadian Slaughter and Grading Data, CBGA, US Data: USDA, Canadian TRQ Data: DFAIT



Beef Supply at a Glance

Year To Date for the Week Ending February 2, 2013

Weekly Federally Inspected Slaughter

	Fed Slaughter				Non-fed Slaughter				Total Canada
	West	East	Canada	Weekly Avg.	West	East	Canada	Weekly Avg.	
2013-02-02	31,542	7,619	39,161		8,423	2,556	10,979		50,140
2013-01-26	26,655	7,896	34,551		9,168	2,633	11,801		46,352
2013-01-19	24,617	9,278	33,895		9,329	3,092	12,421		46,316
2013-01-12	25,522	8,789	34,311		9,279	2,935	12,214		46,525
2013-01-05	21,198	7,188	28,386		7,620	1,522	9,142		37,528
December 2012	112,442	45,782	158,224	31,645	40,972	11,932	52,904	10,581	211,128
November 2012	110,962	44,226	155,188	38,797	21,653	9,536	31,189	7,797	186,377
October 2012	88,401	44,977	133,378	33,345	14,947	7,324	22,271	5,568	155,649
September 2012	155,560	52,350	207,910	41,582	18,398	8,020	26,418	5,284	234,328
August 2012	145,455	40,151	185,606	46,402	16,472	5,977	22,449	5,612	208,055
July 2012	144,623	39,432	184,055	46,014	20,769	7,061	27,830	6,958	211,885
June 2012	189,338	49,697	239,035	47,807	23,060	10,253	33,313	6,663	272,348
May 2012	151,522	40,598	192,120	48,030	18,765	13,246	32,011	8,003	224,131
April 2012	136,434	38,963	175,397	43,849	21,529	14,214	35,743	8,936	211,140
March 2012	170,035	54,134	224,169	44,834	33,164	19,548	52,712	10,542	276,881
February 2012	131,791	36,498	168,289	42,072	28,607	17,727	46,334	11,584	214,623
January 2012	122,876	38,695	161,571	40,393	26,205	16,832	43,037	10,759	204,608
to date 2013	129,534	40,770	170,304	34,061	43,819	12,738	56,557	11,311	226,861
Total 2012	1,659,439	525,503	2,184,942	42,018	284,541	141,670	426,211	8,196	2,611,153

Source : Canadian Beef Grading Agency

Grading								
	Weekly Totals				February 2, 2013			
	West	%	East	%	Canada 2013	%	Canada 2012	%
A - Prime	371	1.2 %	178	2.2 %	549	1.4 %	384	0.9 %
AAA	17,689	56.1 %	4,287	53.9 %	21,976	55.7 %	21,989	49.8 %
AA	13,013	41.3 %	2,753	34.6 %	15,766	39.9 %	20,262	45.9 %
A	264	0.8 %	236	3.0 %	500	1.3 %	822	1.9 %
B1, 2, 3, 4	176	0.6 %	504	6.3 %	680	1.7 %	733	1.7 %
Year-to-date								
	West	%	East	%	Canada 2013	%	Canada 2012	%
A - Prime	1,604	1.2 %	1,060	2.5 %	2,664	1.6 %	1,707	0.8 %
AAA	72,160	55.6 %	22,918	54.7 %	95,078	55.4 %	97,473	47.2 %
AA	53,789	41.4 %	14,923	35.6 %	68,712	40.0 %	100,872	48.8 %
A	1,323	1.0 %	1,063	2.5 %	2,386	1.4 %	3,610	1.7 %
B1, 2, 3, 4	945	0.7 %	1,968	4.7 %	2,913	1.7 %	3,059	1.5 %

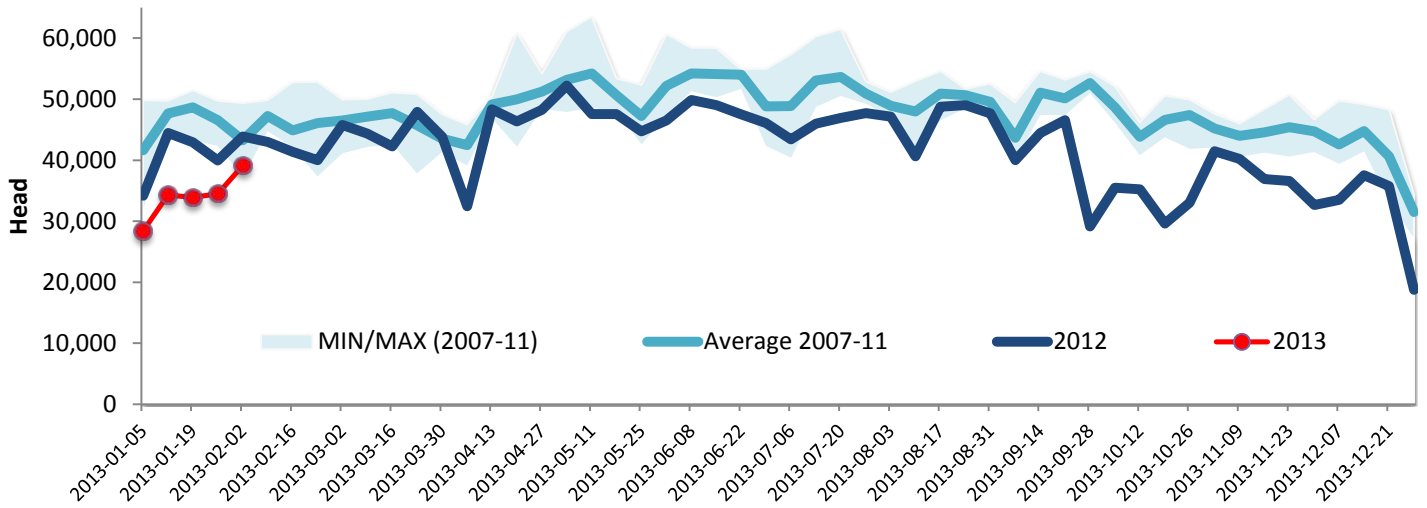
Source : Canadian Beef Grading Agency



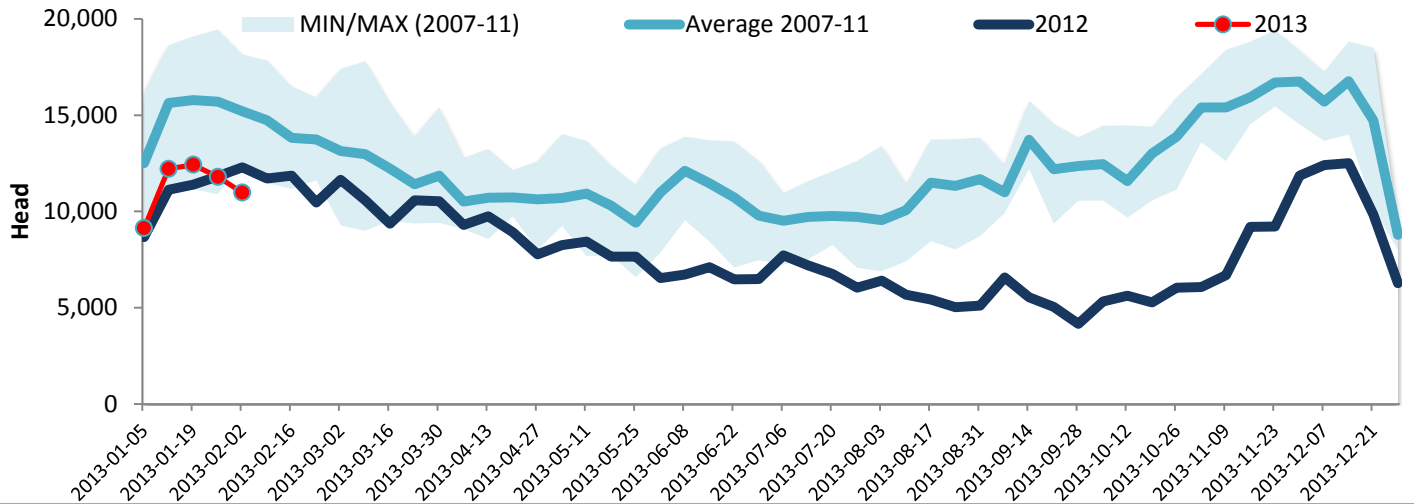
Year To Date for the Week Ending February 2, 2013

Federally Inspected Slaughter

Canadian Fed Slaughter



Canadian Non-Fed Slaughter



Total Cattle Slaughter in Canada

