



# Beef Supply at a Glance - CANADA

Year To Date for the Week Ending February 1, 2014

Federally Inspected Slaughterer (head)	West			East			CANADA		
	2014	2013	% chg	2014	2013	% chg	2014	2013	% chg
Steers	91,926	83,594	10 %	34,433	28,681	20 %	126,359	112,275	13 %
Heifers	51,109	45,940	11 %	13,257	12,089	10 %	64,366	58,029	11 %
Cows	42,700	43,819	-3 %	10,926	12,661	-14 %	53,626	56,480	-5 %
Bulls	296	0	-	42	77	-45 %	338	77	-
<b>Total</b>	<b>186,031</b>	<b>173,353</b>	<b>7 %</b>	<b>58,658</b>	<b>53,508</b>	<b>10 %</b>	<b>244,689</b>	<b>226,861</b>	<b>8 %</b>

Carcass Weight (lbs)									
Steers	830	878	-5 %	894	905	-1 %	848	885	-4 %
Heifers	790	818	-3 %	808	820	-1 %	794	818	-3 %
Cows	674	682	-1 %	657	648	1 %	671	675	-1 %
Bulls	892	0	-	974	917	6 %	902	917	-2 %

Beef Output (tonnes)									
Fed	53,034	50,443	5 %	18,861	16,304	16 %	71,936	66,741	8 %
Non-Fed	13,202	13,584	-3 %	3,281	3,761	-13 %	16,495	17,361	-5 %
<b>Total</b>	<b>66,236</b>	<b>64,027</b>	<b>3 %</b>	<b>22,143</b>	<b>20,066</b>	<b>10 %</b>	<b>88,430</b>	<b>84,103</b>	<b>5 %</b>

Source: Canadian Beef Grading Agency

EXPORTS			
For the period Jan. 1 - Jan. 25, 2014			
Live Cattle	2014	2013	% chg
slaughter steers & heifers	25,632	22,669	13 %
feeder cattle & calves	16,052	8,801	82 %
cows & bulls	31,295	28,134	11 %
others*	2,500	1,317	
<b>Total</b>	<b>75,479</b>	<b>60,921</b>	<b>24 %</b>

\* = breeding and others

Source: USDA - APHIS

Beef & Veal Exports to US			
(Tonnes) Jan. 1 - Nov 30			
	2013	2012	% chg
Fresh/chilled cuts	155,801	156,854	-1 %
Frozen cuts	12,317	15,255	-19 %
Offals	14,023	13,019	8 %
Processed	1,066	1,074	-1 %
<b>TOTAL</b>	<b>183,207</b>	<b>186,202</b>	<b>-2 %</b>
Exports (Jan. 1 - Dec. 31)		271,045	

Source: Statistics Canada

IMPORTS					
For the period Jan. 1 - Nov. 30, 2013					
(# of head)		2013	2012	% chg	
Live Cattle	pure bred	3,308	4,059	-19 %	
From U.S.	non pure bred	52,326	47,286	11 %	
<b>Total</b>		<b>55,634</b>	<b>51,345</b>	<b>8 %</b>	

Source: Statistics Canada

For the period Jan. 1 - Feb. 1, 2014			
Beef and Veal	2014	2013	% chg
(tonnes) preliminary			
United States	13,533	18,106	-25 %
New Zealand	769	1,683	-54 %
Australia	1,553	1,851	-16 %
Uruguay	931	2,849	-67 %
Others	256	103	
<b>Total</b>	<b>17,042</b>	<b>24,592</b>	<b>-31 %</b>
<b>Non-NAFTA Beef/Veal total</b>	3,228	6,297	<b>-49 %</b>
Fresh, chilled & frozen (H.S. 0201, 0202)			

Source: CFIA

Beef & Veal Exports			
(Tonnes) Jan. 1 to Nov. 30			
	2013	2012	% chg
United States	183,207	186,202	-2 %
Hong Kong	23,161	16,767	38 %
Mexico	15,666	21,922	-29 %
Japan	14,652	11,954	23 %
China	5,745	600	
Egypt	2,086	938	
Saudi Arabia	1,330	1,618	-18 %
Macau	1,286	107	
South Korea	1,017	3	
Peru	982	1,970	-50 %
Angola	921	0	
Russia	623	393	59 %
Cuba	611	6,254	-90 %
Suriname	562	335	68 %
Taiwan	523	619	-16 %
Others	5,529	4,903	13 %
<b>TOTAL</b>	<b>257,902</b>	<b>254,585</b>	<b>1 %</b>

Source: Statistics Canada

Beef & Veal Exports			
('000 \$ CDN) Jan. 1 to Nov. 30			
	2013	2012	% chg
United States	834,137	827,264	1 %
Hong Kong	148,249	67,984	
Mexico	81,806	108,329	-24 %
Japan	72,034	69,046	4 %
China	22,076	3,347	
Egypt	2,768	3,023	-8 %
Saudi Arabia	12,701	879	
Macau	6,791	20	
South Korea	6,390	8,871	-28 %
Peru	1,058	4	
Angola	799	533	50 %
Russia	1,718	15,400	-89 %
Cuba	3,623	2,930	24 %
Suriname	2,867	2,636	9 %
Taiwan	2,720	1,339	
Others	22,048	22,010	0 %
<b>TOTAL</b>	<b>1,221,784</b>	<b>1,133,615</b>	<b>8 %</b>

Source: Statistics Canada



# UNITED STATES

Year To Date for the Week Ending January 25, 2014

	Weekly	2014	2013	% chg	Weekly	2014	2013	% chg
<b>Slaughter ('000 head)</b>					<b>Carcass Weight (lbs)</b>			
Steers	299.9	1,129.3	1,166.2	-3 %	Steers	873	873	0 %
Heifers	163.7	653.7	675.8	-3 %	Heifers	810	805	0 %
Cows	125.5	479.4	503.4	-5 %	Cows	621	619	1 %
Bulls	10.8	35.8	35.8	0 %	Bulls	874	883	-1 %
<b>Total</b>	<b>599.8</b>	<b>2,298.2</b>	<b>2,381.2</b>	<b>-3 %</b>				
<b>Total (Jan. To Dec. 2013)</b>			<b>31,796.9</b>					Source : USDA

<b>Beef Output (tonnes)</b>				<b>National Summary of Beef Graded</b>			
Fed	688,034	710,056	-3 %	<b>Dec 2013</b>	<b>2012</b>	<b>2011</b>	
Non-Fed	149,950	156,014	-4 %	Prime	4.2 %	3.6 %	3.6 %
<b>Total</b>	<b>837,984</b>	<b>866,071</b>	<b>-3 %</b>	Choice	67.3 %	65.2 %	65.3 %
<b>Total (Jan. To Dec. 2013)</b>		<b>11,615,011</b>		Select	28.4 %	30.9 %	30.7 %

<b>For the period</b>				<b>Cattle Slaughter for the Week Ending</b>				
	Jan. - Dec.	2013	2012	% chg		2014	2013	% chg
<b>U.S. Beef and Veal Imports (carcass weight, ' 000 lbs)</b>					Canada	54,085	46,352	17 %
Canada		538,188	537,499	0 %	US	599,844	624,349	-4 %
Australia		623,884	654,523	-5 %	<b>Total Canada &amp; US</b>	<b>653,929</b>	<b>670,701</b>	<b>-3 %</b>
New Zealand		526,196	495,329	6 %				
Other		561,805	532,375	6 %	<b>Cattle Slaughter Year to Date</b>			
<b>Total</b>		<b>2,250,073</b>	<b>2,219,726</b>	<b>1 %</b>	Canada	191,790	176,721	9 %

<b>U.S. Beef and Veal Exports (carcass weight, ' 000 lbs)</b>				<b>US Live Cattle Imports</b>				
Mexico		402,979	351,700	15 %	Mexico - Feeder (Jan 1-Feb. 1, 2014)	65,114	81,501	-20 %
Canada		462,951	467,336	-1 %	Canada (Jan. 1 - Jan. 25, 2014)	75,479	60,921	24 %
Japan		670,988	449,301	49 %				
Other		1,046,834	1,184,314	-12 %				
<b>Total</b>		<b>2,583,752</b>	<b>2,452,651</b>	<b>5 %</b>				

## Canada and United States Beef and Veal Tariff Rate Quota Summary

### US Beef and Veal Tariff Rate Quota (TRQ) Summary

YTD Week Ending Feb. 3, 2014	2014			2013			2014 VS 2013
Quota level	Tonnes entered	% filled	Tonnes entered	% filled			
Australia	378,214	9,540	3 %	11,400	3%	-16 %	
New Zealand	213,402	7,198	3 %	8,982	4%	-20 %	
Argentina	20,000	0	0 %	0	0%		
Uruguay	20,000	589	3 %	1,009	5%	-42 %	
Japan	200	10	5 %	6	3%		
Others	64,805	2,788	4 %	3,245	5%	-14 %	
<b>Total TRQ</b>	<b>696,621</b>	<b>20,124</b>	<b>3 %</b>	<b>24,642</b>	<b>4%</b>	<b>-18 %</b>	
<b>TRQ (Australia, N. Z.)</b>	<b>591,616</b>	<b>16,737</b>	<b>3 %</b>	<b>20,382</b>	<b>3%</b>	<b>-18 %</b>	
Canada	no limit	8,944	n/a	8,893	n/a		
Mexico	no limit	4,583	n/a	5,438	n/a		

### Canadian Beef and Veal Import Permits by Country

YTD Week Ending Jan. 25, 2014	2014	2013	% chg
Global quota (tonnes)	76,409	76,409	0 %
Supp. Quota Authorized	-	-	
<b>Total quota</b>	<b>76,409</b>	<b>76,409</b>	<b>0 %</b>
Permits issued			
New Zealand (29600 mt)	868	1,202	-28 %
Australia (35000 mt)	1,665	1,726	-4 %
Uruguay	1,347	2,227	-40 %
Japan	0	0	
<b>Total</b>	<b>3,880</b>	<b>5,155</b>	<b>-25 %</b>

### Canadian Beef and Veal Import Permits by Type of Meat

YTD Jan. 25, 2014	2014 (tonnes)		Total Total (%)	
	Grinding Beef	Cuts	2014	2013
Japan	0	0	0	0 %
Australia	9	1,656	1,665	43 %
New Zealand	0	868	868	22 %
Uruguay	226	1,121	1,347	35 %
<b>Total</b>	<b>235</b>	<b>3,645</b>	<b>3,880</b>	<b>100 %</b>
	Percentage of Total Imports			
	Grinding Beef		Cuts	
	2014	2013	2014	2013
Australia	0.2 %	14.7 %	42.7 %	8.6 %
New Zealand	0.0 %	6.2 %	22.4 %	6.9 %
Argentina				
Uruguay	5.8 %	15.4 %	28.9 %	0.0 %
<b>Total</b>	<b>6.1 %</b>	<b>36.3 %</b>	<b>93.9 %</b>	<b>15.5 %</b>

Sources : Canadian Slaughter and Grading Data, CBGA, US Data: USDA, Canadian TRQ Data: DFAIT



## Beef Supply at a Glance

### Year To Date for the Week Ending February 1, 2014

#### Weekly Federally Inspected Slaughter

	Fed Slaughter				Non-fed Slaughter				Total Canada
	West	East	Canada	Weekly Avg.	West	East	Canada	Weekly Avg.	
2014-02-01	31,594	10,565	42,159		8,771	1,969	10,740		
January 2014	111,441	37,125	148,566	37,142	34,225	8,999	43,224	10,806	191,790
December 2013	129,571	48,817	178,388	35,678	49,111	10,725	59,836	11,967	238,224
November 2013	118,003	41,585	159,588	39,897	39,756	9,317	49,073	12,268	208,661
October 2013	123,755	43,450	167,205	41,801	32,154	7,032	39,186	9,797	206,391
September 2013	174,998	52,658	227,656	45,531	27,352	6,966	34,318	6,864	261,974
August 2013	132,749	39,384	172,133	43,033	22,682	6,630	29,312	7,328	201,445
July 2013	127,118	41,123	168,241	42,060	22,389	6,049	28,438	7,110	196,679
June 2013	149,357	54,963	204,320	40,864	25,649	8,168	33,817	6,763	238,137
May 2013	131,026	42,211	173,237	43,309	23,723	5,228	28,951	7,238	202,188
April 2013	136,709	45,396	182,105	45,526	23,738	6,313	30,051	7,513	212,156
March 2013	162,105	48,960	211,065	42,213	30,814	9,815	40,629	8,126	251,694
February 2013	115,609	33,933	149,542	37,386	33,082	8,796	41,878	10,470	191,420
January 2013	97,992	33,151	131,143	32,786	35,396	10,182	45,578	11,395	176,721
to date 2014	143,035	47,690	190,725	38,145	42,996	10,968	53,964	10,793	244,689
Total 2013	1,598,992	525,631	2,124,623	40,858	365,846	95,221	461,067	8,867	2,585,690

Grading								
	Weekly Totals				February 1, 2014			
	West	%	East	%	Canada 2014	%	Canada 2013	%
A - Prime	300	0.9 %	261	2.4 %	561	1.3 %	549	1.4 %
AAA	17,284	54.6 %	5,749	53.8 %	23,033	54.4 %	21,976	55.7 %
AA	13,564	42.9 %	4,077	38.2 %	17,641	41.7 %	15,766	39.9 %
A	347	1.1 %	287	2.7 %	634	1.5 %	500	1.3 %
B1, 2, 3, 4	139	0.4 %	309	2.9 %	448	1.1 %	680	1.7 %
Year-to-date								
	West	%	East	%	Canada 2014	%	Canada 2013	%
A - Prime	1,027	0.7 %	1,496	3.1 %	2,523	1.3 %	2,664	1.6 %
AAA	77,495	54.2 %	27,835	57.3 %	105,330	55.0 %	95,078	55.4 %
AA	61,901	43.3 %	16,226	33.4 %	78,127	40.8 %	68,712	40.0 %
A	1,589	1.1 %	1,350	2.8 %	2,939	1.5 %	2,386	1.4 %
B1, 2, 3, 4	873	0.6 %	1,663	3.4 %	2,536	1.3 %	2,913	1.7 %

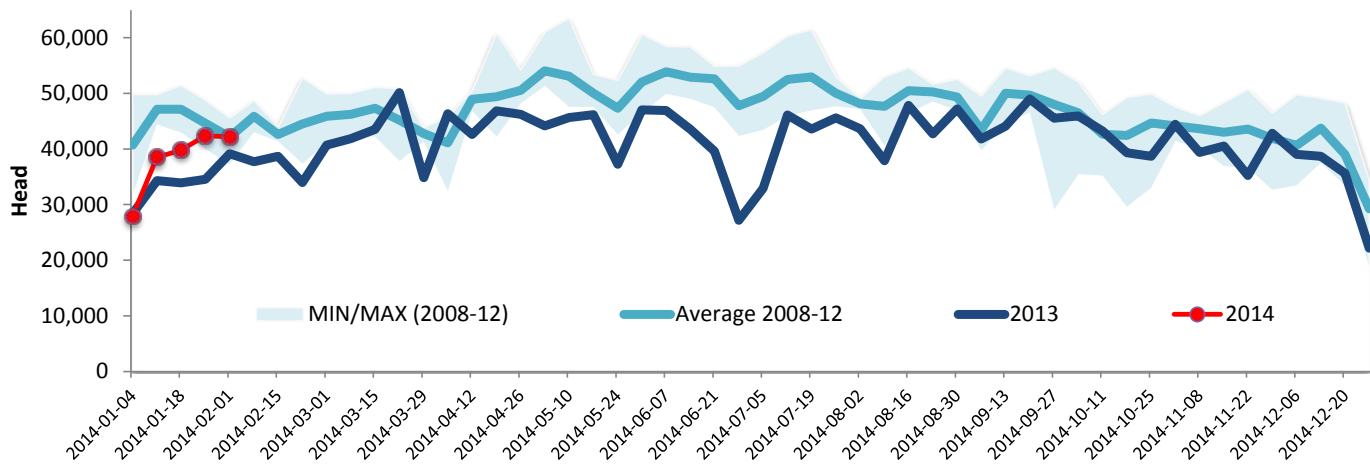
Source : Canadian Beef Grading Agency



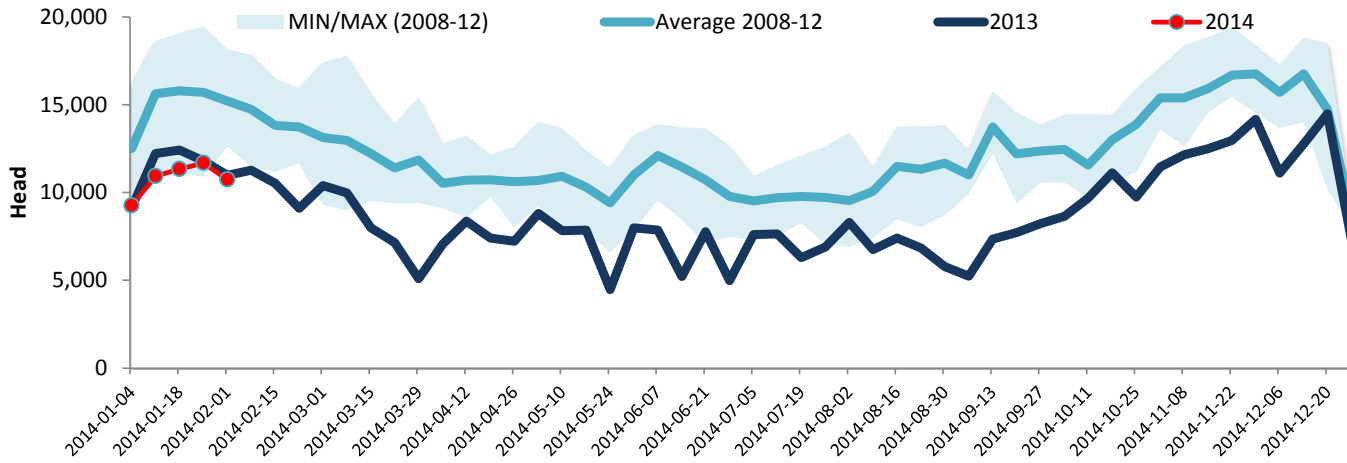
Year To Date for the Week Ending February 1, 2014

Federally Inspected Slaughter

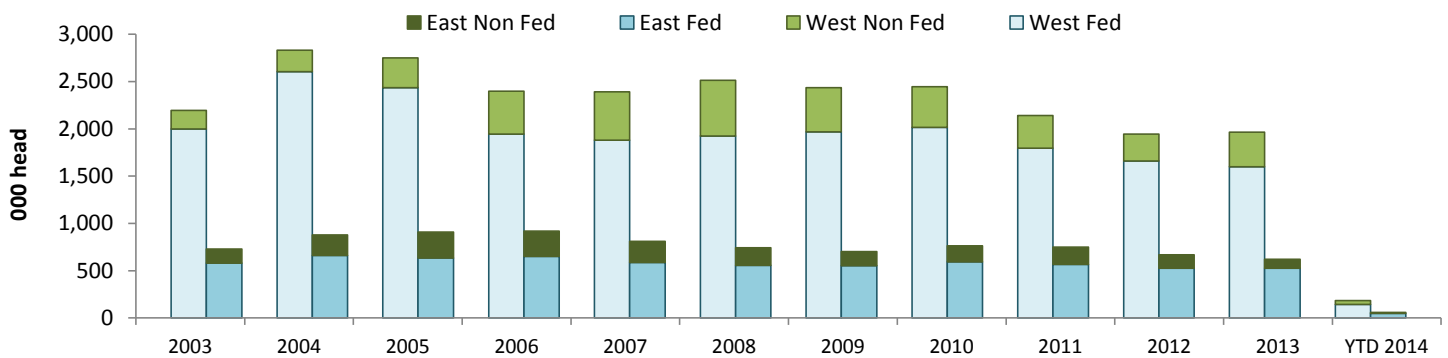
### Canadian Fed Slaughter



### Canadian Non-Fed Slaughter



### Total Cattle Slaughter in Canada



Source : Canadian Beef Grading Agency