



Beef Supply at a Glance - CANADA

Year To Date for the Week Ending December 28, 2013

Federally Inspected Slaughter (head)	West			East			CANADA		
	2013	2012	% chg	2013	2012	% chg	2013	2012	% chg
Steers	962,748	985,559	-2 %	381,360	369,019	3 %	1,344,108	1,354,578	-1 %
Heifers	636,244	673,880	-6 %	144,271	156,484	-8 %	780,515	830,364	-6 %
Cows	361,488	272,490	33 %	94,689	139,900	-32 %	456,177	412,390	11 %
Bulls	4,358	12,051	-64 %	532	1,770	-70 %	4,890	13,821	-65 %
Total	1,964,838	1,943,980	1 %	620,852	667,173	-7 %	2,585,690	2,611,153	-1 %
Carcass Weight (lbs)									
Steers	868	874	-1 %	892	893	0 %	875	879	0 %
Heifers	816	825	-1 %	800	801	0 %	813	820	-1 %
Cows	677	696	-3 %	654	637	3 %	673	677	-1 %
Bulls	887	1,039	-15 %	882	933	-5 %	886	1,026	-14 %
							Source: Canadian Beef Grading Agency		
Beef Output (tonnes)									
Fed	615,837	644,241	-4 %	207,086	206,763	0 %	823,024	850,715	-3 %
Non-Fed	112,997	91,897	23 %	28,362	41,258	-31 %	141,518	133,349	6 %
Total	728,833	736,138	-1 %	235,448	248,021	-5 %	964,542	984,064	-2 %

EXPORTS	For the period Jan. 1 - Dec. 21, 2013		
Live Cattle	2013	2012	% chg
slaughter steers & heifers	342,780	410,646	-17 %
feeder cattle & calves	313,068	134,344	133 %
cows & bulls	376,095	253,520	48 %
others*	12,068	8,562	41 %
Total	1,044,011	807,072	29 %

* = breeding and others

Source: USDA - APHIS

Beef & Veal Exports to US	2013	2012	% chg
(Tonnes) Jan. 1 - Nov. 30			
Fresh/chilled cuts	155,801	156,854	-1 %
Frozen cuts	12,317	15,255	-19 %
Offals	14,023	13,019	8 %
Processed	1,066	1,074	-1 %
TOTAL	183,207	186,202	-2 %
Exports (Jan. 1 - Dec. 31)		271,045	

Source: Statistics Canada

Beef & Veal Exports	Jan. 1 to Nov. 30		
(Tonnes)	2013	2012	% chg
United States	183,207	186,202	-2 %
Hong Kong	23,161	16,767	38 %
Mexico	15,666	21,922	-29 %
Japan	14,652	11,954	23 %
China	5,745	600	
Egypt	2,086	938	
Saudi Arabia	1,330	1,618	-18 %
Macao	1,286	107	
South Korea	1,017	3	
Peru	982	1,970	-50 %
Angola	921	0	
Russia	623	393	59 %
Cuba	611	6,254	-90 %
Suriname	562	335	68 %
Taiwan	523	619	-16 %
Others	5,529	4,903	13 %
TOTAL	257,902	254,585	1 %

Source: Statistics Canada

IMPORTS	For the period Jan. 1 - Nov. 30, 2013		
(# of head)	2013	2012	% chg
Live Cattle pure bred	3,308	4,059	-19 %
From U.S. non pure bred	52,326	47,286	11 %
Total	55,634	51,345	8 %

Source: Statistics Canada

	For the period Jan. 1 - Dec. 28, 2013		
Beef and Veal	2013	2012	% chg
(tonnes) preliminary			
United States	171,760	176,057	-2 %
New Zealand	14,094	20,257	-30 %
Australia	16,920	15,920	6 %
Uruguay	12,102	10,900	11 %
Others	3,581	3,398	5 %
Total	218,456	226,533	-4 %
Non-NAFTA Beef/Veal total	46,680	50,476	-8 %
Fresh, chilled & frozen (H.S. 0201, 0202)			

Source: CFIA

Beef & Veal Exports	Jan. 1 to Nov. 30		
('000 \$ CDN)	2013	2012	% chg
United States	834,137	827,264	1 %
Hong Kong	148,249	67,984	
Mexico	81,806	108,329	-24 %
Japan	72,034	69,046	4 %
China	22,076	3,347	
Egypt	2,768	3,023	-8 %
Saudi Arabia	12,701	879	
Macao	6,791	20	
South Korea	6,390	8,871	-28 %
Peru	1,058	4	
Angola	799	533	50 %
Russia	1,718	15,400	-89 %
Cuba	3,623	2,930	24 %
Suriname	2,867	2,636	9 %
Taiwan	2,720	1,339	
Others	22,048	22,010	0 %
TOTAL	1,221,784	1,133,615	8 %

Source: Statistics Canada



UNITED STATES

Year To Date for the Week Ending December 21, 2013

	Weekly	2013	2012	% chg	Weekly	2013	2012	% chg
Slaughter ('000 head)					Carcass Weight (lbs)			
Steers	310.5	15,721.2	15,882.9	-1 %	Steers	872	863	1 %
Heifers	176.5	8,957.1	9,103.9	-2 %	Heifers	807	763	-4 %
Cows	118.9	6,137.4	6,328.7	-3 %	Cows	623	620	2 %
Bulls	10.7	549.0	544.9	1 %	Bulls	868	881	0 %
Total	616.7	31,364.8	31,860.4	-2 %				
Total (Jan. To Dec. 2012)			32,336.9					Source : USDA

Beef Output (tonnes)				National Summary of Beef Graded			
Fed	9,274,611	9,471,745	-2 %	Nov 2013	2012	2011	
Non-Fed	1,948,013	1,966,463	-1 %	Prime	4.1 %	3.6 %	3.6 %
Total	11,222,624	11,438,208	-2 %	Choice	62.1 %	65.2 %	65.3 %
Total (Jan. To Dec. 2012)		11,615,011		Select	26.9 %	30.9 %	30.7 %

For the period Jan. - Oct. 2013 2012 % chg				Cattle Slaughter for the Week Ending 2013-12-21			
U.S. Beef and Veal Imports (carcass weight, ' 000 lbs)							
Canada	448,834	480,038	-7 %	Canada	50,142	45,636	10 %
Australia	510,964	548,841	-7 %	US	616,660	631,553	-2 %
New Zealand	479,158	442,705	8 %	Total Canada & US	666,802	677,189	-2 %
Other	478,496	436,056	10 %	Cattle Slaughter Year to Date			
Total	1,917,452	1,907,640	1 %	Canada	2,556,238	2,586,147	-1 %
				US	31,364,795	31,860,357	-2 %
				Total Canada & US	33,921,033	34,446,504	-2 %

U.S. Beef and Veal Exports (carcass weight, ' 000 lbs)				US Live Cattle Imports			
Mexico	321,984	305,252	5 %	Mexico - Feeder (Jan 1-Dec. 28, 2013)	974,657	1,446,797	-33 %
Canada	397,155	373,607	6 %	Canada (Jan. 1 - Dec. 21, 2013)	1,044,011	807,072	29 %
Japan	577,717	393,155	47 %				
Other	842,859	983,740	-14 %				
Total	2,139,715	2,055,754	4 %				

Canada and United States Beef and Veal Tariff Rate Quota Summary

US Beef and Veal Tariff Rate Quota (TRQ) Summary

YTD Week Ending Dec. 30, 2013		2013			2012			
Quota level	Tonnes entered	% filled	Tonnes entered	% filled	2013 VS 2012			
Australia	378,214	201,083	53 %	213,436	56 %	-6 %		
New Zealand	213,402	168,650	79 %	158,589	74 %	6 %		
Argentina	20,000	0	0 %	0	0 %			
Uruguay	20,000	19,138	96 %	17,680	88 %	8 %		
Japan	200	98	49 %	28	14 %			
Others	64,805	40,732	63 %	47,946	74 %	-15 %		
Total TRQ	696,621	429,701	62 %	437,679	63 %	-2 %		
TRQ (Australia, N. Z.)	591,616	369,733	62 %	372,025	63 %	-1 %		
Canada	no limit	173,018	n/a	175,594	n/a	-1 %		
Mexico	no limit	87,325	n/a	84,551	n/a	3 %		

Canadian Beef and Veal Import Permits by Country

YTD Week Ending Dec. 30, 2013		2013			2012			
				% chg				
Global quota (tonnes)	76,409	76,409	0 %					
Supp. Quota Authorized	-	-						
Total quota	76,409	76,409	0 %					
Permits issued								
New Zealand (29600 mt)	13,888	20,392	-32 %					
Australia (35000 mt)	17,204	15,092	14 %					
Uruguay	11,806	11,056	7 %					
Japan	3	0						
Total	42,901	46,540	-8 %					

Canadian Beef and Veal Import Permits by Type of Meat

YTD Dec. 30, 2013		2013 (tonnes)			
		Grinding Beef		Cuts	Total Total (%)
Japan	0	0	3	3	0 %
Australia	10,925	10,925	6,279	17,204	40 %
New Zealand	5,876	5,876	8,012	13,888	32 %
Uruguay	10,911	10,911	894	11,806	28 %
Total	27,713	27,713	15,188	42,901	100 %
		Percentage of Total Imports			
		Grinding Beef		Cuts	
		2013	2012	2013	2012
Australia	25.5 %	11.7 %	14.6 %	8.5 %	
New Zealand	13.7 %	15.3 %	18.7 %	22.1 %	
Argentina					
Uruguay	25.4 %	18.0 %	2.1 %	1.9 %	
Total	64.6 %	45.0 %	35.4 %	32.4 %	

Sources : Canadian Slaughter and Grading Data, CBGA, US Data: USDA, Canadian TRQ Data: DFAIT



Beef Supply at a Glance

Year To Date for the Week Ending December 28, 2013

Weekly Federally Inspected Slaughter

	Fed Slaughter				Non-fed Slaughter				Total Canada
	West	East	Canada	Weekly Avg.	West	East	Canada	Weekly Avg.	
2013-12-28	17,726	4,417	22,143		6,277	1,032	7,309		29,452
2013-12-21	25,720	9,936	35,656		12,205	2,281	14,486		50,142
2013-12-14	28,074	10,640	38,714		10,289	2,471	12,760		51,474
2013-12-07	26,846	12,206	39,052		8,867	2,245	11,112		50,164
2013-11-30	31,205	11,618	42,823		11,473	2,696	14,169		56,992
November 2013	118,003	41,585	159,588	39,897	39,756	9,317	49,073	12,268	208,661
October 2013	123,755	43,450	167,205	41,801	32,154	7,032	39,186	9,797	206,391
September 2013	174,998	52,658	227,656	45,531	27,352	6,966	34,318	6,864	261,974
August 2013	132,749	39,384	172,133	43,033	22,682	6,630	29,312	7,328	201,445
July 2013	127,118	41,123	168,241	42,060	22,389	6,049	28,438	7,110	196,679
June 2013	149,357	54,963	204,320	40,864	25,649	8,168	33,817	6,763	238,137
May 2013	131,026	42,211	173,237	43,309	23,723	5,228	28,951	7,238	202,188
April 2013	136,709	45,396	182,105	45,526	23,738	6,313	30,051	7,513	212,156
March 2013	162,105	48,960	211,065	42,213	30,814	9,815	40,629	8,126	251,694
February 2013	115,609	33,933	149,542	37,386	33,082	8,796	41,878	10,470	191,420
January 2013	97,992	33,151	131,143	32,786	35,396	10,182	45,578	11,395	176,721
to date 2013	1,598,992	525,631	2,124,623	40,858	365,846	95,221	461,067	8,867	2,585,690
Total 2012	1,659,439	525,503	2,184,942	42,018	284,541	141,670	426,211	8,196	2,611,153

Grading								
	Weekly Totals				December 28, 2013			
	West	%	East	%	Canada 2013	%	Canada 2012	%
A - Prime	130	0.7 %	205	4.6 %	335	1.5 %	185	1.4 %
AAA	9,680	54.7 %	2,751	62.2 %	12,431	56.2 %	8,014	58.6 %
AA	7,583	42.9 %	1,254	28.3 %	8,837	40.0 %	5,174	37.8 %
A	164	0.9 %	157	3.5 %	321	1.5 %	230	1.7 %
B1, 2, 3, 4	124	0.7 %	59	1.3 %	183	0.8 %	73	0.5 %
Year-to-date								
	West	%	East	%	Canada 2013	%	Canada 2012	%
A - Prime	22,190	1.4 %	11,401	2.1 %	33,591	1.6 %	24,146	1.1 %
AAA	879,211	55.1 %	290,074	54.4 %	1,169,285	54.9 %	1,191,943	54.6 %
AA	642,839	40.3 %	196,683	36.9 %	839,522	39.4 %	882,083	40.4 %
A	28,064	1.8 %	15,167	2.8 %	43,231	2.0 %	45,066	2.1 %
B1, 2, 3, 4	24,468	1.5 %	19,595	3.7 %	44,063	2.1 %	39,859	1.8 %

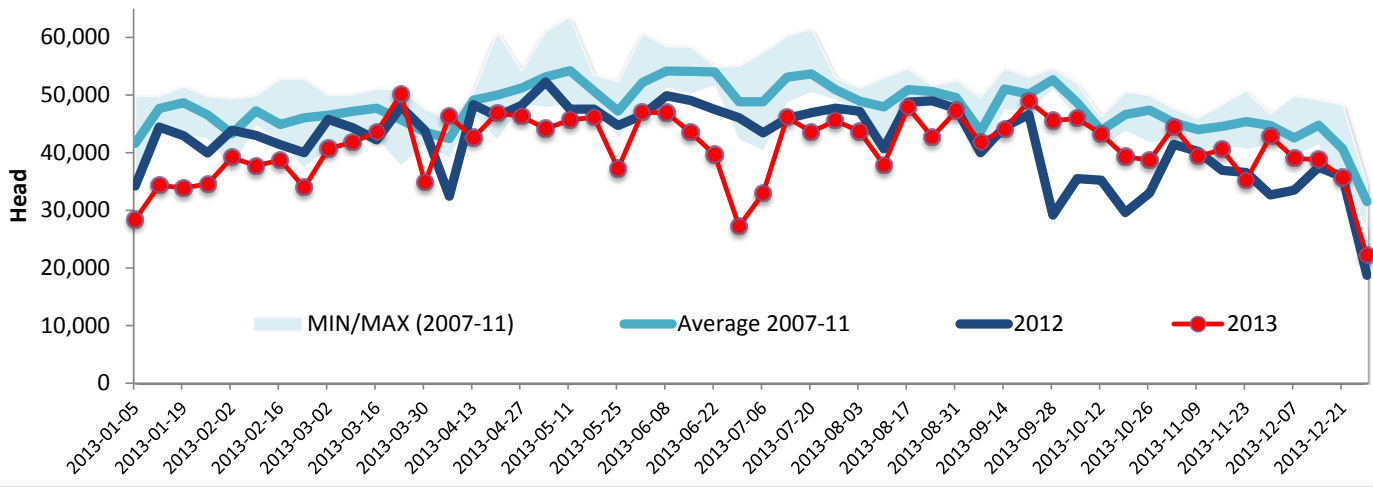
Source : Canadian Beef Grading Agency



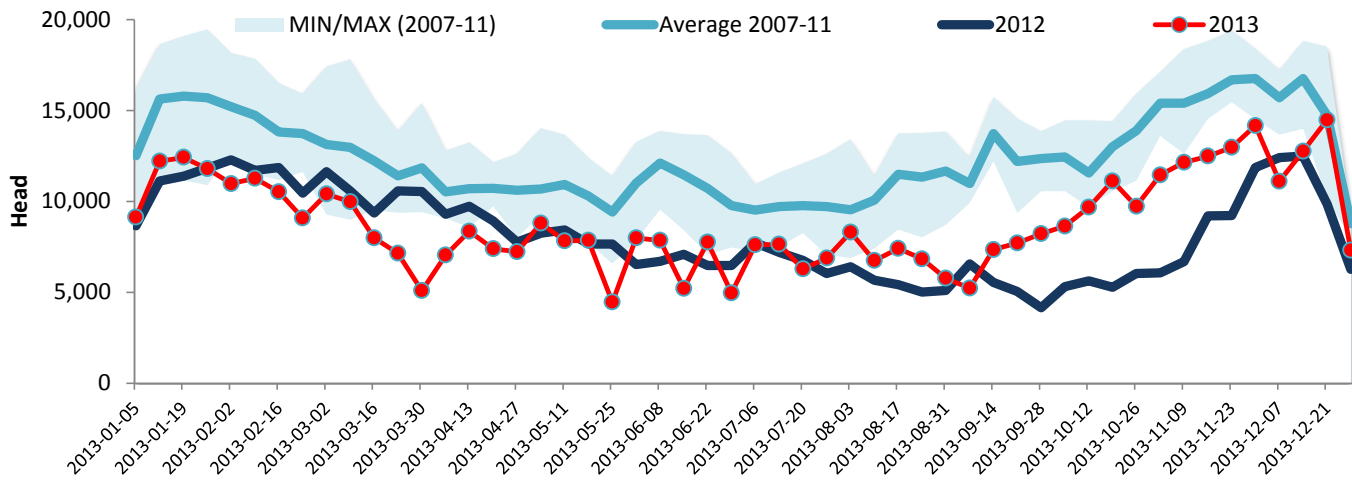
Year To Date for the Week Ending December 28, 2013

Federally Inspected Slaughter

Canadian Fed Slaughter



Canadian Non-Fed Slaughter



Total Cattle Slaughter in Canada

