



# Beef Supply at a Glance - CANADA

Year To Date for the Week Ending December 21, 2013

Federally Inspected Slaughter (head)	West			East			CANADA		
	2013	2012	% chg	2013	2012	% chg	2013	2012	% chg
Steers	951,423	976,273	-3 %	377,974	364,756	4 %	1,329,397	1,341,029	-1 %
Heifers	629,843	669,855	-6 %	143,240	155,321	-8 %	773,083	825,176	-6 %
Cows	355,242	267,076	33 %	93,657	139,049	-33 %	448,899	406,125	11 %
Bulls	4,327	12,051	-64 %	532	1,766	-70 %	4,859	13,817	-65 %
<b>Total</b>	<b>1,940,835</b>	<b>1,925,255</b>	<b>1 %</b>	<b>615,403</b>	<b>660,892</b>	<b>-7 %</b>	<b>2,556,238</b>	<b>2,586,147</b>	<b>-1 %</b>

Carcass Weight (lbs)									
Steers	868	874	-1 %	892	893	0 %	875	879	0 %
Heifers	816	825	-1 %	800	801	0 %	813	820	-1 %
Cows	678	697	-3 %	654	637	3 %	673	677	-1 %
Bulls	887	1,039	-15 %	882	933	-5 %	887	1,026	-14 %

Beef Output (tonnes)									
Fed	608,994	639,042	-5 %	205,339	204,609	0 %	814,427	843,368	-3 %
Non-Fed	111,224	90,306	23 %	28,055	41,010	-32 %	139,281	131,419	6 %
<b>Total</b>	<b>720,218</b>	<b>729,348</b>	<b>-1 %</b>	<b>233,394</b>	<b>245,619</b>	<b>-5 %</b>	<b>953,708</b>	<b>974,787</b>	<b>-2 %</b>

Source: Canadian Beef Grading Agency

EXPORTS				IMPORTS				
For the period Jan. 1 - Dec. 14, 2013				For the period Jan. 1 - Oct. 31, 2013				
Live Cattle	2013	2012	% chg	(# of head)	2013	2012	% chg	
slaughter steers & heifers	336,706	404,279	-17 %	Live Cattle	pure bred	2,909	3,776	-23 %
feeder cattle & calves	307,211	132,992	131 %	From U.S.	non pure bred	49,872	42,833	16 %
cows & bulls	365,282	243,551	50 %	<b>Total</b>	<b>52,781</b>	<b>46,609</b>	<b>13 %</b>	
others*	10,932	7,884	39 %	Source: Statistics Canada				
<b>Total</b>	<b>1,020,131</b>	<b>788,706</b>	<b>29 %</b>	For the period Jan. 1 - Dec. 21, 2013				

\* = breeding and others

Source: USDA - APHIS

Beef & Veal Exports to US			
(Tonnes)	2013	2012	% chg
Jan. 1 - Oct. 31			
Fresh/chilled cuts	140,528	148,252	-5 %
Frozen cuts	10,726	14,499	-26 %
Offals	12,799	12,322	4 %
Processed	994	967	3 %
<b>TOTAL</b>	<b>165,046</b>	<b>176,039</b>	<b>-6 %</b>
Exports (Jan. 1 - Dec. 31)		271,045	

Source: Statistics Canada

Beef and Veal			
(tonnes) preliminary	2013	2012	% chg
United States	170,232	173,622	-2 %
New Zealand	13,960	20,151	-31 %
Australia	16,908	15,538	9 %
Uruguay	12,102	10,797	12 %
Others	3,580	3,398	5 %
<b>Total</b>	<b>216,782</b>	<b>223,507</b>	<b>-3 %</b>
<b>Non-NAFTA Beef/Veal total</b>	<b>42,400</b>	<b>46,137</b>	<b>-8 %</b>
Fresh, chilled & frozen (H.S. 0201, 0202)			

Source: CFIA

Beef & Veal Exports			
(Tonnes)	Jan. 1 to Oct. 31		
	2013	2012	% chg
United States	165,046	176,039	-6 %
Hong Kong	20,982	15,625	34 %
Mexico	14,147	20,869	-32 %
Japan	13,773	10,776	28 %
China	4,961	938	
Egypt	2,050	1,614	27 %
Saudi Arabia	1,282	107	
Macau	1,263	3	
Peru	957	0	
Angola	844	366	
South Korea	839	1,668	-50 %
Russia	623	5,579	-89 %
Suriname	527	557	-5 %
Cuba	513	311	65 %
Philippines	491	859	-43 %
Others	5,128	4,161	23 %
<b>TOTAL</b>	<b>233,427</b>	<b>239,472</b>	<b>-3 %</b>

Source: Statistics Canada

Beef & Veal Exports			
('000 \$ CDN)	Jan. 1 to Oct. 31		
	2013	2012	% chg
United States	747,844	781,752	-4 %
Hong Kong	133,583	61,003	
Mexico	73,682	102,607	-28 %
Japan	68,018	62,403	9 %
China	18,731	3,347	
Egypt	2,662	2,987	-11 %
Saudi Arabia	12,224	879	
Macau	6,580	20	
Peru	1,044	0	
Angola	745	509	46 %
South Korea	4,633	7,556	-39 %
Russia	1,718	13,947	-88 %
Suriname	2,673	2,341	14 %
Cuba	3,117	2,734	14 %
Philippines	2,175	2,623	-17 %
Others	20,359	18,522	10 %
<b>TOTAL</b>	<b>1,099,789</b>	<b>1,063,228</b>	<b>3 %</b>

Source: Statistics Canada

**UNITED STATES**

Year To Date for the Week Ending December 14, 2013

	Weekly	2013	2012	% chg	Weekly	2013	2012	% chg
<b>Slaughter ('000 head)</b>					<b>Carcass Weight (lbs)</b>			
Steers	312.4	15,410.7	15,575.5	-1 %	Steers	872	863	858 1 %
Heifers	166.8	8,780.6	8,928.0	-2 %	Heifers	801	793	792 0 %
Cows	119.3	6,018.5	6,191.8	-3 %	Cows	621	620	608 2 %
Bulls	9.2	538.3	533.4	1 %	Bulls	860	881	878 0 %
<b>Total</b>	<b>607.8</b>	<b>30,748.1</b>	<b>31,228.8</b>	<b>-2 %</b>				
<b>Total (Jan. To Dec. 2012)</b>			<b>32,336.9</b>					Source : USDA

**Beef Output (tonnes)**

Fed	9,211,284	9,288,536	-1 %
Non-Fed	1,910,253	1,924,091	-1 %
<b>Total</b>	<b>11,121,537</b>	<b>11,212,627</b>	<b>-1 %</b>
<b>Total (Jan. To Dec. 2012)</b>		<b>11,615,011</b>	

**National Summary of Beef Graded**

	Nov 2013	2012	2011
Prime	4.4 %	3.6 %	3.6 %
Choice	66.6 %	65.2 %	65.3 %
Select	28.9 %	30.9 %	30.7 %

**Cattle Slaughter for the Week Ending**

	2013	2012	% chg
Canada	51,474	50,027	3 %
US	607,765	640,605	-5 %
<b>Total Canada &amp; US</b>	<b>659,239</b>	<b>690,632</b>	<b>-5 %</b>

**Cattle Slaughter Year to Date**

	2013	2012	% chg
Canada	2,506,096	2,540,511	-1 %
US	30,748,135	31,228,804	-2 %
<b>Total Canada &amp; US</b>	<b>33,254,231</b>	<b>33,769,315</b>	<b>-2 %</b>

**US Live Cattle Imports**

Mexico - Feeder (Jan 1-Dec. 21, 2013)	960,054	1,440,527	-33 %
Canada (Jan. 1 - Dec. 14, 2013)	1,020,131	788,706	29 %

For the period	Jan. - Nov.	2013	2012	% chg
<b>U.S. Beef and Veal Imports (carcass weight, ' 000 lbs)</b>				
Canada	498,865	507,702	-2 %	
Australia	569,863	604,264	-6 %	
New Zealand	495,418	461,471	7 %	
Other	519,800	483,776	7 %	
<b>Total</b>	<b>2,083,946</b>	<b>2,057,213</b>	<b>1 %</b>	

**U.S. Beef and Veal Exports (carcass weight, ' 000 lbs)**

Mexico	357,326	327,050	9 %
Canada	427,811	420,465	2 %
Japan	626,198	422,717	48 %
Other	944,477	1,085,799	-13 %
<b>Total</b>	<b>2,355,812</b>	<b>2,256,031</b>	<b>4 %</b>

**Canada and United States Beef and Veal Tariff Rate Quota Summary****US Beef and Veal Tariff Rate Quota (TRQ) Summary**

YTD Week Ending Dec. 23, 2013	2013			2012			2013 VS 2012
Quota level	Tonnes entered	% filled	Tonnes entered	% filled	2013 VS 2012		
Australia	378,214	193,582	51 %	208,170	55 %	-7 %	
New Zealand	213,402	164,427	77 %	154,840	73 %	6 %	
Argentina	20,000	0	0 %	0	0 %		
Uruguay	20,000	18,478	92 %	16,963	85 %	9 %	
Japan	200	98	49 %	27	14 %		
Others	64,805	39,613	61 %	46,646	72 %	-15 %	
<b>Total TRQ</b>	<b>696,621</b>	<b>416,197</b>	<b>60 %</b>	<b>426,646</b>	<b>61 %</b>	<b>-2 %</b>	
<b>TRQ (Australia, N. Z.)</b>	<b>591,616</b>	<b>358,009</b>	<b>61 %</b>	<b>363,010</b>	<b>61 %</b>	<b>-1 %</b>	
Canada	no limit	169,808	n/a	173,397	n/a	-2 %	
Mexico	no limit	86,125	n/a	83,032	n/a	4 %	

**Canadian Beef and Veal Import Permits by Country**

YTD Week Ending Dec. 23, 2013	2013	2012	% chg
Global quota (tonnes)	76,409	76,409	0 %
Supp. Quota Authorized	-	-	
<b>Total quota</b>	<b>76,409</b>	<b>76,409</b>	<b>0 %</b>
Permits issued			
New Zealand (29600 mt)	13,812	20,372	-32 %
Australia (35000 mt)	17,192	14,973	15 %
Uruguay	11,806	10,879	9 %
Japan	3	0	
<b>Total</b>	<b>42,813</b>	<b>46,225</b>	<b>-7 %</b>

**Canadian Beef and Veal Import Permits by Type of Meat**

YTD Dec. 23, 2013	2013 (tonnes)		Percentage of Total Imports	
	Grinding Beef	Cuts	2013	2012
Japan	0	3		
Australia	10,925	6,267	17,192	40 %
New Zealand	5,838	7,974	13,812	32 %
Uruguay	10,911	894	11,806	28 %
<b>Total</b>	<b>27,675</b>	<b>15,138</b>	<b>42,813</b>	<b>100 %</b>
	Grinding Beef		Cuts	
	2013	2012	2013	2012
Australia	25.5 %	11.8 %	14.6 %	8.5 %
New Zealand	13.6 %	15.4 %	18.6 %	22.2 %
Argentina				
Uruguay	25.5 %	18.1 %	2.1 %	1.9 %
<b>Total</b>	<b>64.6 %</b>	<b>45.3 %</b>	<b>35.4 %</b>	<b>32.7 %</b>

Sources : Canadian Slaughter and Grading Data, CBGA, US Data: USDA, Canadian TRQ Data: DFAIT



**Beef Supply at a Glance**  
Year To Date for the Week Ending December 21, 2013

**Weekly Federally Inspected Slaughter**

	Fed Slaughter				Non-fed Slaughter				Total Canada
	West	East	Canada	Weekly Avg.	West	East	Canada	Weekly Avg.	
2013-12-21	25,720	9,936	35,656		12,205	2,281	14,486		50,142
2013-12-14	28,074	10,640	38,714		10,289	2,471	12,760		51,474
2013-12-07	26,846	12,206	39,052		8,867	2,245	11,112		50,164
2013-11-30	31,205	11,618	42,823		11,473	2,696	14,169		56,992
November 2013	118,003	41,585	159,588	39,897	39,756	9,317	49,073	12,268	208,661
October 2013	123,755	43,450	167,205	41,801	32,154	7,032	39,186	9,797	206,391
September 2013	174,998	52,658	227,656	45,531	27,352	6,966	34,318	6,864	261,974
August 2013	132,749	39,384	172,133	43,033	22,682	6,630	29,312	7,328	201,445
July 2013	127,118	41,123	168,241	42,060	22,389	6,049	28,438	7,110	196,679
June 2013	149,357	54,963	204,320	40,864	25,649	8,168	33,817	6,763	238,137
May 2013	131,026	42,211	173,237	43,309	23,723	5,228	28,951	7,238	202,188
April 2013	136,709	45,396	182,105	45,526	23,738	6,313	30,051	7,513	212,156
March 2013	162,105	48,960	211,065	42,213	30,814	9,815	40,629	8,126	251,694
February 2013	115,609	33,933	149,542	37,386	33,082	8,796	41,878	10,470	191,420
January 2013	97,992	33,151	131,143	32,786	35,396	10,182	45,578	11,395	176,721
to date 2013	1,581,266	521,214	2,102,480	41,225	359,569	94,189	453,758	8,897	2,556,238
Total 2012	1,659,439	525,503	2,184,942	42,018	284,541	141,670	426,211	8,196	2,611,153

Grading								
	Weekly Totals				December 21, 2013			
	West	%	East	%	Canada 2013	%	Canada 2012	%
A - Prime	3,392	11.8 %	246	2.4 %	3,638	9.4 %	429	1.2 %
AAA	13,896	48.4 %	5,662	56.2 %	19,558	50.5 %	19,858	55.5 %
AA	10,712	37.3 %	3,488	34.6 %	14,200	36.6 %	14,078	39.3 %
A	313	1.1 %	307	3.0 %	620	1.6 %	813	2.3 %
B1, 2, 3, 4	375	1.3 %	368	3.7 %	743	1.9 %	621	1.7 %
Year-to-date								
	West	%	East	%	Canada 2013	%	Canada 2012	%
A - Prime	25,151	1.6 %	11,196	2.1 %	36,347	1.7 %	23,961	1.1 %
AAA	869,531	55.0 %	287,323	54.4 %	1,156,854	54.8 %	1,183,929	54.6 %
AA	635,256	40.2 %	195,429	37.0 %	830,685	39.4 %	876,909	40.4 %
A	27,900	1.8 %	15,010	2.8 %	42,910	2.0 %	44,836	2.1 %
B1, 2, 3, 4	24,344	1.5 %	19,536	3.7 %	43,880	2.1 %	39,786	1.8 %

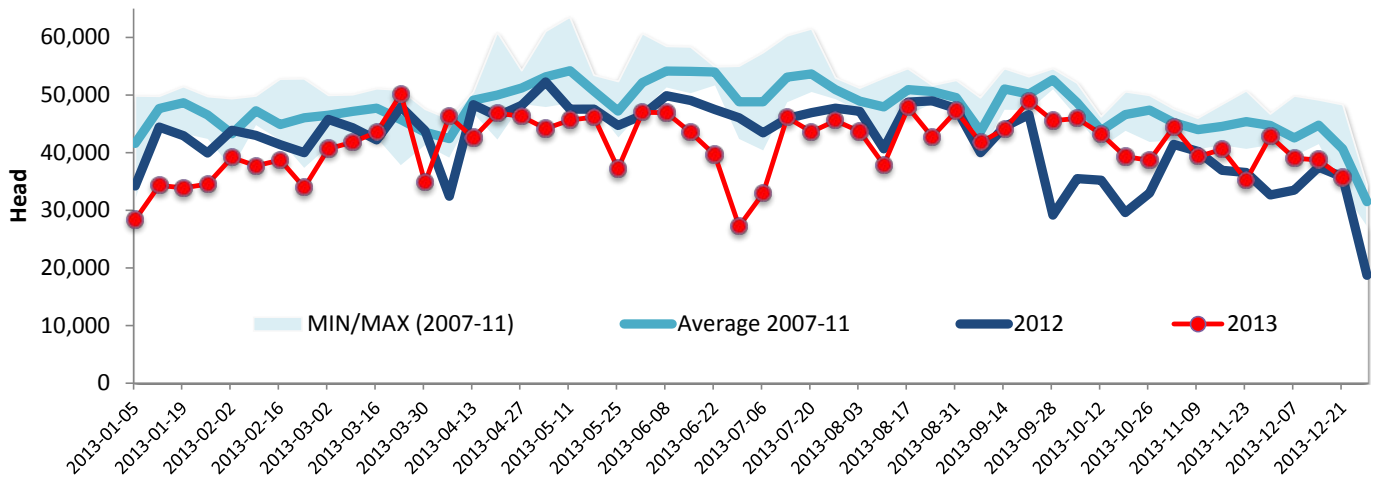
Source : Canadian Beef Grading Agency



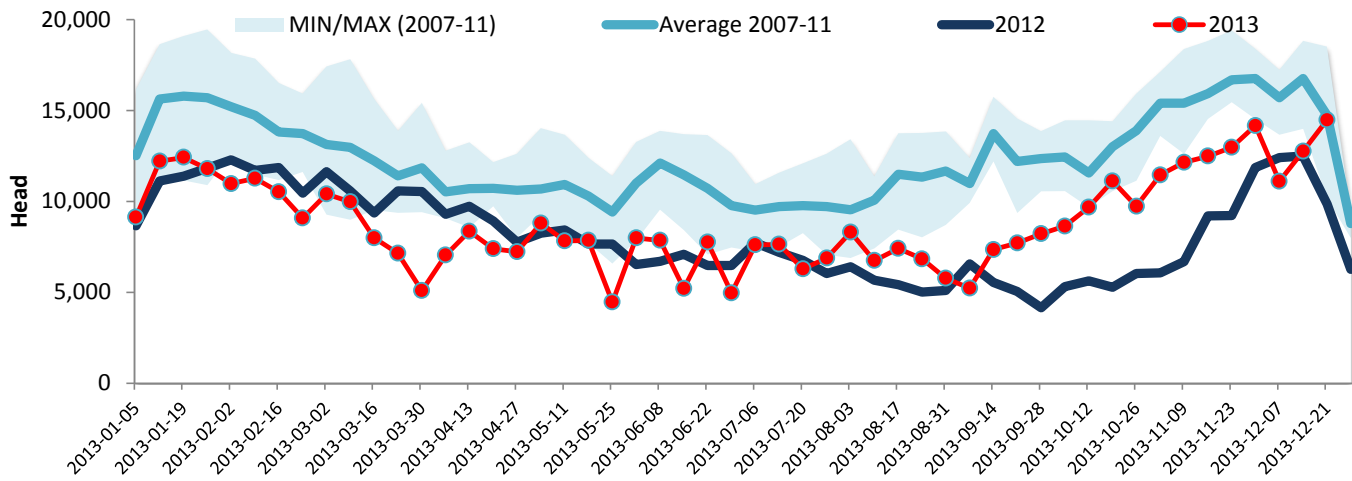
Year To Date for the Week Ending December 21, 2013

Federally Inspected Slaughter

### Canadian Fed Slaughter



### Canadian Non-Fed Slaughter



### Total Cattle Slaughter in Canada

