



Beef Supply at a Glance - CANADA

Year To Date for the Week Ending December 14, 2013

Federally Inspected Slaughterer (head)	West			East			CANADA		
	2013	2012	% chg	2013	2012	% chg	2013	2012	% chg
Steers	936,017	961,232	-3 %	370,384	357,891	3 %	1,306,401	1,319,123	-1 %
Heifers	619,529	658,509	-6 %	140,894	152,791	-8 %	760,423	811,300	-6 %
Cows	343,149	259,548	32 %	91,388	136,733	-33 %	434,537	396,281	10 %
Bulls	4,215	12,051	-65 %	520	1,756	-70 %	4,735	13,807	-66 %
Total	1,902,910	1,891,340	1 %	603,186	649,171	-7 %	2,506,096	2,540,511	-1 %
Carcass Weight (lbs)									
Steers	869	874	-1 %	892	893	0 %	875	879	0 %
Heifers	817	825	-1 %	799	801	0 %	814	820	-1 %
Cows	679	698	-3 %	654	637	3 %	674	677	0 %
Bulls	891	1,039	-14 %	881	933	-6 %	890	1,026	-13 %
Beef Output (tonnes)									
Fed	599,797	628,812	-5 %	201,344	200,901	0 %	800,948	829,443	-3 %
Non-Fed	107,615	88,039	22 %	27,375	40,335	-32 %	135,042	128,386	5 %
Total	707,413	716,851	-1 %	228,719	241,236	-5 %	935,990	957,829	-2 %

Source: Canadian Beef Grading Agency

EXPORTS			
For the period Jan. 1 - Dec. 7, 2013			
Live Cattle	2013	2012	% chg
slaughter steers & heifers	330,426	397,647	-17 %
feeder cattle & calves	297,999	131,827	126 %
cows & bulls	354,341	233,041	52 %
others*	9,931	7,371	35 %
Total	992,697	769,886	29 %

* = breeding and others

Source: USDA - APHIS

Beef & Veal Exports to US			
(Tonnes) Jan. 1 - Oct. 31			
	2013	2012	% chg
Fresh/chilled cuts	140,528	148,252	-5 %
Frozen cuts	10,726	14,499	-26 %
Offals	12,799	12,322	4 %
Processed	994	967	3 %
TOTAL	165,046	176,039	-6 %
Exports (Jan. 1 - Dec. 31)		271,045	

Source: Statistics Canada

Beef & Veal Exports			
(Tonnes) Jan. 1 to Oct. 31			
	2013	2012	% chg
United States	165,046	176,039	-6 %
Hong Kong	20,982	15,625	34 %
Mexico	14,147	20,869	-32 %
Japan	13,773	10,776	28 %
China	4,961	938	
Egypt	2,050	1,614	27 %
Saudi Arabia	1,282	107	
Macau	1,263	3	
Peru	957	0	
Angola	844	366	
South Korea	839	1,668	-50 %
Russia	623	5,579	-89 %
Suriname	527	557	-5 %
Cuba	513	311	65 %
Philippines	491	859	-43 %
Others	5,128	4,161	23 %
TOTAL	233,427	239,472	-3 %

Source: Statistics Canada

IMPORTS			
For the period Jan. 1 - Oct. 31, 2013			
(# of head)	2013	2012	% chg
Live Cattle pure bred	2,909	3,776	-23 %
From U.S. non pure bred	49,872	42,833	16 %
Total	52,781	46,609	13 %

Source: Statistics Canada

Beef and Veal			
(tonnes) preliminary For the period Jan. 1 - Dec. 14, 2013			
	2013	2012	% chg
United States	166,881	169,894	-2 %
New Zealand	13,703	19,912	-31 %
Australia	16,297	14,850	10 %
Uruguay	12,000	10,593	13 %
Others	3,543	3,380	5 %
Total	212,423	218,629	-3 %

Non-NAFTA Beef/Veal total **41,461** **45,005** **-8 %**
 Fresh, chilled & frozen (H.S. 0201, 0202)

Source: CFIA

Beef & Veal Exports			
('000 \$ CDN) Jan. 1 to Oct. 31			
	2013	2012	% chg
United States	747,844	781,752	-4 %
Hong Kong	133,583	61,003	
Mexico	73,682	102,607	-28 %
Japan	68,018	62,403	9 %
China	18,731	3,347	
Egypt	2,662	2,987	-11 %
Saudi Arabia	12,224	879	
Macau	6,580	20	
Peru	1,044	0	
Angola	745	509	46 %
South Korea	4,633	7,556	-39 %
Russia	1,718	13,947	-88 %
Suriname	2,673	2,341	14 %
Cuba	3,117	2,734	14 %
Philippines	2,175	2,623	-17 %
Others	20,359	18,522	10 %
TOTAL	1,099,789	1,063,228	3 %

Source: Statistics Canada

**UNITED STATES**

Year To Date for the Week Ending December 7, 2013

	Weekly	2013	2012	% chg	Weekly	2013	2012	% chg
Slaughter ('000 head)					Carcass Weight (lbs)			
Steers	309.7	15,098.3	15,262.7	-1 %	Steers	877	863	858 1 %
Heifers	181.4	8,613.7	8,753.8	-2 %	Heifers	806	793	791 0 %
Cows	127.3	5,899.2	6,049.9	-2 %	Cows	614	620	608 2 %
Bulls	10.5	529.1	521.8	1 %	Bulls	867	881	878 0 %
Total	628.8	30,140.4	30,588.2	-1 %				
Total (Jan. To Dec. 2012)			32,336.9					Source : USDA

Beef Output (tonnes)				National Summary of Beef Graded			
Fed	9,026,440	9,099,855	-1 %	Oct 2013	2012	2011	
Non-Fed	1,873,050	1,880,205	0 %	Prime	4.1 %	3.6 %	3.6 %
Total	10,899,489	10,980,060	-1 %	Choice	65.8 %	65.2 %	65.3 %
Total (Jan. To Dec. 2012)		11,615,011		Select	30.0 %	30.9 %	30.7 %

For the period				Cattle Slaughter for the Week Ending				
	Jan. - Oct.	2013	2012	% chg		2013	2012	% chg
U.S. Beef and Veal Imports (carcass weight, ' 000 lbs)								
Canada		448,834	480,038	-7 %	Canada	50,164	45,919	9 %
Australia		510,964	548,841	-7 %	US	628,830	640,859	-2 %
New Zealand		479,158	442,705	8 %	Total Canada & US	678,994	686,778	-1 %
Other		478,496	436,056	10 %				
Total		1,917,452	1,907,640	1 %	Cattle Slaughter Year to Date			
					Canada	2,454,622	2,490,484	-1 %
					US	30,140,370	30,588,199	-1 %
					Total Canada & US	32,594,992	33,078,683	-1 %

U.S. Beef and Veal Exports (carcass weight, ' 000 lbs)				US Live Cattle Imports			
Mexico	321,984	305,252	5 %	Mexico - Feeder (Jan 1-Dec. 14, 2013)	921,052	1,412,459	-35 %
Canada	397,155	373,607	6 %	Canada (Jan. 1 - Dec. 7, 2013)	992,697	769,886	29 %
Japan	577,717	393,155	47 %				
Other	842,859	983,740	-14 %				
Total	2,139,715	2,055,754	4 %				

Canada and United States Beef and Veal Tariff Rate Quota Summary**US Beef and Veal Tariff Rate Quota (TRQ) Summary**

YTD Week Ending Dec. 16, 2013		2013			2012		
	Quota level	Tonnes entered	% filled	Tonnes entered	% filled	2013 VS 2012	
Australia	378,214	189,269	50 %	195,071	52%	-3 %	
New Zealand	213,402	162,545	76 %	147,996	69%	10 %	
Argentina	20,000	0	0 %	0	0%		
Uruguay	20,000	17,939	90 %	15,488	77%	16 %	
Japan	200	96	48 %	24	12%		
Others	64,805	39,102	60 %	44,864	69%	-13 %	
Total TRQ	696,621	408,952	59 %	403,443	58%	1 %	
TRQ (Australia, N. Z.)	591,616	351,815	59 %	343,067	58%	3 %	
Canada	no limit	166,139	n/a	169,444	n/a	-2 %	
Mexico	no limit	84,765	n/a	78,993	n/a	7 %	

Canadian Beef and Veal Import Permits by Country

YTD Week Ending Dec. 16, 2013		2013			2012		
			% chg				
Global quota (tonnes)	76,409	76,409	0 %				
Supp. Quota Authorized	-	-					
Total quota	76,409	76,409	0 %				
Permits issued							
New Zealand (29600 mt)	13,536	20,117	-33 %				
Australia (35000 mt)	16,858	14,366	17 %				
Uruguay	11,806	10,673	11 %				
Japan	3	0					
Total	42,204	45,157	-7 %				

Canadian Beef and Veal Import Permits by Type of Meat

YTD Dec. 16, 2013		2013 (tonnes)			
		Grinding Beef		Cuts	Total Total (%)
Japan	0	0	3	3	0 %
Australia	10,735	10,735	6,124	16,858	40 %
New Zealand	5,706	5,706	7,830	13,536	32 %
Uruguay	10,911	10,911	894	11,806	28 %
Total	27,352	27,352	14,851	42,204	100 %
		Percentage of Total Imports			
		Grinding Beef		Cuts	
		2013	2012	2013	2012
Australia	25.4 %	12.1 %	14.5 %	8.7 %	
New Zealand	13.5 %	15.8 %	18.6 %	22.7 %	
Argentina					
Uruguay	25.9 %	18.5 %	2.1 %	2.0 %	
Total	64.8 %	46.4 %	35.2 %	33.4 %	

Sources : Canadian Slaughter and Grading Data, CBGA, US Data: USDA, Canadian TRQ Data: DFAIT



Beef Supply at a Glance
Year To Date for the Week Ending December 14, 2013

Weekly Federally Inspected Slaughter

	Fed Slaughter				Non-fed Slaughter				Total Canada
	West	East	Canada	Weekly Avg.	West	East	Canada	Weekly Avg.	
2013-12-14	28,074	10,640	38,714		10,289	2,471	12,760		51,474
2013-12-07	26,846	12,206	39,052		8,867	2,245	11,112		50,164
2013-11-30	31,205	11,618	42,823		11,473	2,696	14,169		56,992
2013-11-23	25,252	9,990	35,242		10,568	2,410	12,978		48,220
2013-11-16	29,693	10,845	40,538		10,195	2,291	12,486		53,024
2013-11-09	29,075	10,289	39,364		10,021	2,128	12,149		51,513
2013-11-02	33,983	10,461	44,444		8,972	2,488	11,460		55,904
2013-10-26	27,871	10,797	38,668		7,864	1,869	9,733		48,401
2013-10-19	30,555	8,768	39,323		9,406	1,719	11,125		50,448
2013-10-12	32,104	11,150	43,254		7,876	1,813	9,689		52,943
2013-10-05	33,225	12,735	45,960		7,008	1,631	8,639		54,599
2013-09-28	34,009	11,527	45,536		6,761	1,465	8,226		53,762
2013-09-21	38,360	10,612	48,972		6,287	1,433	7,720		56,692
2013-09-14	33,391	10,729	44,120		5,929	1,424	7,353		51,473
2013-09-07	33,136	8,653	41,789		4,195	1,039	5,234		47,023
2013-08-31	36,102	11,137	47,239		4,180	1,605	5,785		53,024
August 2013	132,749	39,384	172,133	43,033	22,682	6,630	29,312	7,328	201,445
July 2013	127,118	41,123	168,241	42,060	22,389	6,049	28,438	7,110	196,679
June 2013	149,357	54,963	204,320	40,864	25,649	8,168	33,817	6,763	238,137
May 2013	131,026	42,211	173,237	43,309	23,723	5,228	28,951	7,238	202,188
April 2013	136,709	45,396	182,105	45,526	23,738	6,313	30,051	7,513	212,156
March 2013	162,105	48,960	211,065	42,213	30,814	9,815	40,629	8,126	251,694
February 2013	115,609	33,933	149,542	37,386	33,082	8,796	41,878	10,470	191,420
January 2013	97,992	33,151	131,143	32,786	35,396	10,182	45,578	11,395	176,721
to date 2013	1,555,546	511,278	2,066,824	41,336	347,364	91,908	439,272	8,785	2,506,096
Total 2012	1,659,439	525,503	2,184,942	42,018	284,541	141,670	426,211	8,196	2,611,153

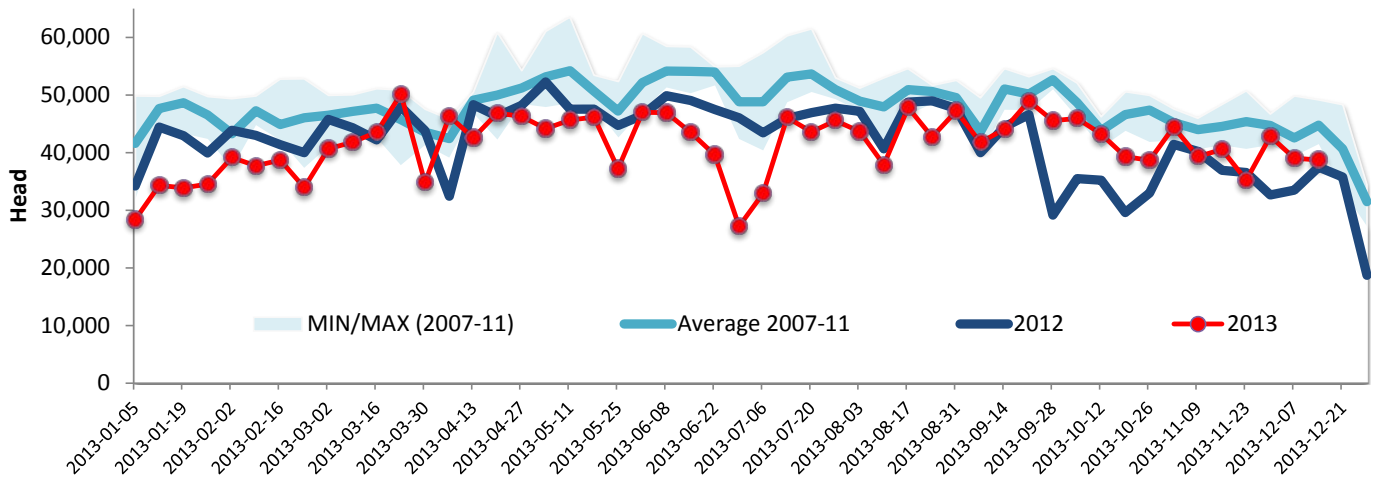
Grading								
	Weekly Totals				December 14, 2013			
	West	%	East	%	Canada 2013	%	Canada 2012	%
A - Prime	245	0.9 %	296	2.8 %	541	1.4 %	504	1.3 %
AAA	14,559	52.2 %	5,950	55.4 %	20,509	53.1 %	20,381	54.3 %
AA	12,176	43.7 %	3,743	34.8 %	15,919	41.2 %	14,852	39.6 %
A	516	1.9 %	359	3.3 %	875	2.3 %	1,081	2.9 %
B1, 2, 3, 4	390	1.4 %	398	3.7 %	788	2.0 %	710	1.9 %
	Year-to-date				December 14, 2013			
	West	%	East	%	Canada 2013	%	Canada 2012	%
A - Prime	21,759	1.4 %	10,950	2.1 %	32,709	1.6 %	23,532	1.1 %
AAA	855,635	55.1 %	281,661	54.3 %	1,137,296	54.9 %	1,164,071	54.6 %
AA	624,544	40.2 %	191,941	37.0 %	816,485	39.4 %	862,831	40.4 %
A	27,587	1.8 %	14,703	2.8 %	42,290	2.0 %	44,023	2.1 %
B1, 2, 3, 4	23,969	1.5 %	19,168	3.7 %	43,137	2.1 %	39,165	1.8 %



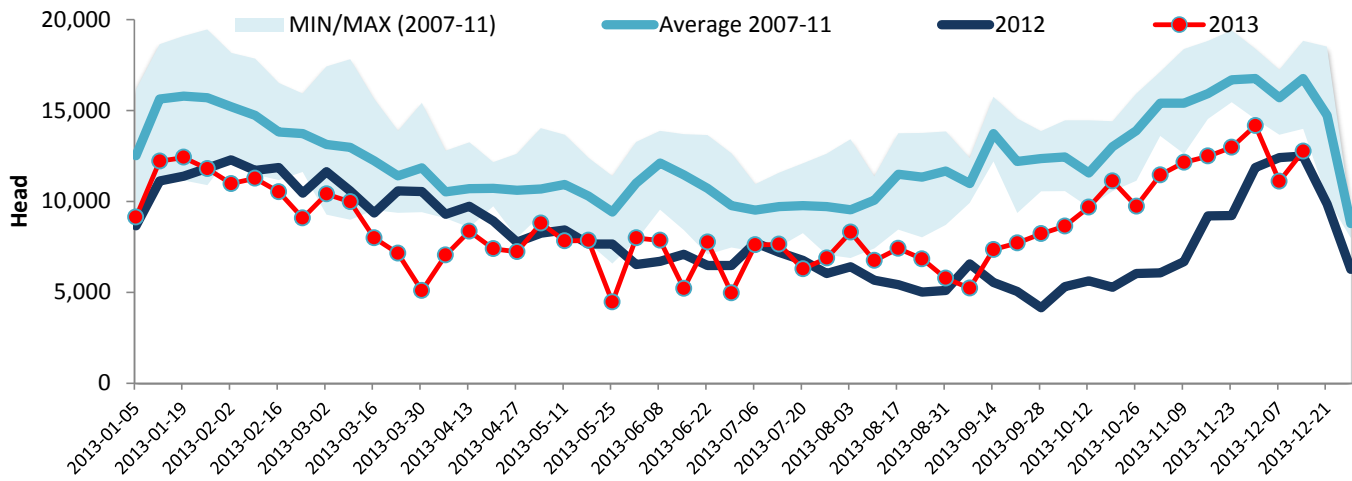
Year To Date for the Week Ending December 14, 2013

Federally Inspected Slaughter

Canadian Fed Slaughter



Canadian Non-Fed Slaughter



Total Cattle Slaughter in Canada

