



# Beef Supply at a Glance - CANADA

Year To Date for the Week Ending December 6, 2014

Federally Inspected Slaughter (head)	West			East			CANADA		
	2014	2013	% chg	2014	2013	% chg	2014	2013	% chg
Steers	979,608	920,464	6 %	367,109	362,576	1 %	1,346,717	1,283,040	5 %
Heifers	669,952	607,008	10 %	136,574	138,062	-1 %	806,526	745,070	8 %
Cows	304,034	332,962	-9 %	81,851	88,922	-8 %	385,885	421,884	-9 %
Bulls	5,382	4,113	31 %	530	515	3 %	5,912	4,628	28 %
<b>Total</b>	<b>1,958,976</b>	<b>1,864,547</b>	<b>5 %</b>	<b>586,064</b>	<b>590,075</b>	<b>-1 %</b>	<b>2,545,040</b>	<b>2,454,622</b>	<b>4 %</b>

Carcass Weight (lbs)									
Steers	848	869	-2 %	896	892	0 %	861	876	-2 %
Heifers	793	818	-3 %	800	799	0 %	794	815	-3 %
Cows	689	679	1 %	662	654	1 %	684	674	1 %
Bulls	931	893	4 %	906	880	3 %	928	891	4 %

Beef Output (tonnes)									
Fed	619,082	589,453	5 %	199,177	197,151	1 %	818,139	786,604	4 %
Non-Fed	97,495	104,489	-7 %	24,848	26,644	-7 %	122,469	131,174	-7 %
<b>Total</b>	<b>716,577</b>	<b>693,942</b>	<b>3 %</b>	<b>224,025</b>	<b>223,795</b>	<b>0 %</b>	<b>940,608</b>	<b>917,777</b>	<b>2 %</b>

Source: Canadian Beef Grading Agency

EXPORTS			
For the period Jan. 1 - Nov. 29, 2014			
Live Cattle	2014	2013	% chg
slaughter steers & heifers	367,849	324,614	13 %
feeder cattle & calves	417,988	285,482	46 %
cows & bulls	320,948	342,638	-6 %
others*	23,982	9,321	
<b>Total</b>	<b>1,130,767</b>	<b>962,055</b>	<b>18 %</b>

\*= breeding and others  
Source: USDA - APHIS

Beef & Veal Exports to US			
For the period Jan. 1 - Oct. 31, 2014			
(Tonnes)	2014	2013	% chg
Fresh/chilled cuts	155,619	140,465	11 %
Frozen cuts	10,680	10,726	0 %
Offals	15,048	12,816	17 %
Processed	2,082	994	109 %
<b>TOTAL</b>	<b>183,430</b>	<b>165,000</b>	<b>11 %</b>
Exports (Jan. 1 - Dec. 31)		278,896	0 %

Source: Statistics Canada

Beef & Veal Exports			
For the period Jan. 1 - Oct. 31, 2014			
(Tonnes)	2014	2013	% chg
United States	183,430	165,000	11 %
Hong Kong	21,880	21,004	4 %
Mexico	19,511	14,165	38 %
Japan	15,686	13,773	14 %
China	5,939	4,961	20 %
Angola	2,370	844	
Peru	1,898	635	
South Korea	1,727	839	
Taiwan	1,457	461	
Egypt	1,331	2,050	-35 %
Suriname	786	527	49 %
Ivory Coast	731	367	99 %
Saudi Arabia	702	1,282	-45 %
Senegal	501	364	38 %
Cuba	398	513	-23 %
Others	4,385	6,307	-30 %
<b>TOTAL</b>	<b>262,730</b>	<b>233,093</b>	<b>13 %</b>

Source: Statistics Canada

IMPORTS					
For the period Jan. 1 - Oct. 31, 2014					
(# of head)		2014	2013	% chg	
Live Cattle	pure bred	2,423	3,094	-22 %	
From U.S.	non pure bred	35,614	39,033	-9 %	
	<b>Total</b>	<b>38,037</b>	<b>42,127</b>	<b>-10 %</b>	

Beef and Veal			
For the period Jan. 1 - Nov. 29, 2014			
(tonnes)	2014	2013	% chg
United States	124,096	160,407	-23 %
Australia	28,002	15,656	79 %
Uruguay	13,266	12,000	11 %
New Zealand	13,540	13,529	0 %
Others	3,560	3,539	1 %
<b>Total</b>	<b>182,464</b>	<b>205,130</b>	<b>-11 %</b>
<b>Non-NAFTA Beef/Veal total</b>	55,007	40,608	35 %
Fresh, chilled & frozen (H.S. 0201, 0202)			

Source: CFIA

Beef & Veal Exports			
For the period Jan. 1 - Oct. 31, 2014			
('000 \$ CDN)	2014	2013	% chg
United States	1,094,323	747,667	46 %
Hong Kong	163,892	133,806	22 %
Mexico	122,814	73,702	67 %
Japan	83,737	68,018	23 %
China	33,110	18,731	77 %
Angola	2,601	745	
Peru	3,370	730	
South Korea	13,715	4,633	
Taiwan	10,206	2,304	
Egypt	2,007	2,662	-25 %
Suriname	3,352	2,673	25 %
Ivory Coast	723	363	99 %
Saudi Arabia	5,517	12,224	-55 %
Senegal	495	235	
Cuba	2,144	3,117	-31 %
Others	19,656	27,897.545	
<b>TOTAL</b>	<b>1,561,661</b>	<b>1,099,508</b>	<b>42 %</b>

Source: Statistics Canada

**UNITED STATES**

Year To Date for the Week Ending November 29, 2014

Slaughter ('000 head)					Carcass Weight (lbs)				
	Weekly	2014	2013	% chg		Weekly	2014	2013	% chg
Steers	247.9	14,270.8	14,788.6	-4 %	Steers	901	872	863	1 %
Heifers	148.9	7,775.8	8,432.4	-8 %	Heifers	827	798	793	1 %
Cows	87.2	4,958.3	5,771.9	-14 %	Cows	633	627	620	1 %
Bulls	8.0	507.8	518.6	-2 %	Bulls	891	898	863	4 %
<b>Total</b>	<b>492.0</b>	<b>27,512.7</b>	<b>29,511.5</b>	<b>-7 %</b>					
<b>Total (Jan. To Dec. 2013)</b>			<b>31,796.9</b>						

Source : USDA

Beef Output (tonnes)				National Summary of Beef Graded			
		2014	2013	% chg	Sep. 2014	2013	2012
Fed		8,476,917	8,840,652	-4 %	Prime	4.6 %	3.4 %
Non-Fed		1,620,362	1,830,083	-11 %	Choice	68.3 %	64.9 %
<b>Total</b>		<b>10,097,279</b>	<b>10,670,734</b>	<b>-5 %</b>	Select	27.0 %	31.2 %
<b>Total (Jan. To Dec. 2013)</b>			<b>11,504,554</b>				

U.S. Beef and Veal Imports (carcass weight, '000,000 lbs)					Cattle Slaughter for the Week Ending			
For the period	Jan. - Oct.	2014	2013	% chg	2014	2013	% chg	
<b>Canada</b>					Canada	55,405	56,992	-3 %
<b>Australia</b>					US	491,978	555,868	-11 %
<b>New Zealand</b>					<b>Total Canada &amp; US</b>	<b>547,383</b>	<b>612,860</b>	<b>-11 %</b>
<b>Other</b>					<b>Cattle Slaughter Year to Date</b>			
<b>Total</b>					Canada	2,491,904	2,404,458	4 %
					US	27,512,666	29,511,541	-7 %
					<b>Total Canada &amp; US</b>	<b>30,004,570</b>	<b>31,915,999</b>	<b>-6 %</b>

U.S. Beef and Veal Exports (carcass weight, '000,000 lbs)					US Live Cattle Imports			
		2014	2013	% chg		2014	2013	
Mexico		367	322	14 %	Mexico - Feeder (Jan 1-Dec. 6, 2014)	972,103	857,822	13 %
Canada		309	402	-23 %	Canada (Jan. 1 - Nov. 29, 2014)	1,130,767	962,055	18 %
Japan		570	578	-1 %				
Other		911	843	8 %				
<b>Total</b>		<b>2,157</b>	<b>2,146</b>	<b>1 %</b>				

**Canada and United States Beef and Veal Tariff Rate Quota Summary****US Beef and Veal Tariff Rate Quota (TRQ) Summary**

YTD Week Ending Dec. 8, 2014	2014			2013			2014 VS 2013
	Quota level	Tonnes entered	% filled	Tonnes entered	% filled		
Australia	378,214	310,871	82 %	183,313	48%	70 %	
New Zealand	213,402	176,460	83 %	160,550	75%	10 %	
Argentina	20,000	0	0 %	0	0%		
Uruguay	20,000	18,152	91 %	17,833	89%	2 %	
Japan	200	125	62 %	88	44%	41 %	
Others	64,805	50,838	78 %	38,563	60%	32 %	
<b>Total TRQ</b>	<b>696,621</b>	<b>556,446</b>	<b>80 %</b>	<b>400,348</b>	<b>57 %</b>	<b>39 %</b>	
<b>TRQ (Australia, N. Z.)</b>	<b>591,616</b>	<b>487,331</b>	<b>82 %</b>	<b>343,863</b>	<b>58 %</b>	<b>42 %</b>	
Canada	no limit	178,774	n/a	162,505	n/a	n/a	
Mexico	no limit	101,028	n/a	82,982	n/a	n/a	

**Canadian Beef and Veal Import Permits by Country****Canadian Beef and Veal Import Permits by Type of Meat**

YTD Week Ending Dec. 8, 2014	2014			2013			2014 VS 2013
	Quota level	Tonnes entered	% chg	Tonnes entered	% filled		
Global quota (tonnes)	76,409	76,409	0 %				
Supp. Quota Authorized	-	-					
<b>Total quota</b>	<b>76,409</b>	<b>76,409</b>	<b>0 %</b>				
<b>Permits issued</b>							
New Zealand (29600 mt)	14,257	13,212	8 %				
Australia (35000 mt)	31,479	16,117	95 %				
Uruguay	11,807	11,806	0 %				
Japan	2	3	-44 %				
<b>Total</b>	<b>57,544</b>	<b>41,138</b>	<b>40 %</b>				
Over quota tariff rate : 26.5 %							

YTD Dec. 8, 2014	2014		2013		Total Total (%)
	Grinding Beef	Cuts	Grinding Beef	Cuts	
Japan	1	2			3 0 %
Australia	21,817	9,661			31,479 55 %
New Zealand	6,613	7,643			14,257 25 %
Uruguay	9,864	1,943			11,807 21 %
<b>Total</b>	<b>38,296</b>	<b>19,249</b>			<b>57,545 100 %</b>
<b>Percentage of Total Imports</b>					
	2014		2013		
Australia	37.9 %	24.7 %	16.8 %	14.5 %	
New Zealand	11.5 %	13.7 %	13.3 %	18.4 %	
Uruguay	17.1 %	26.5 %	3.4 %	2.2 %	
<b>Total</b>	<b>66.5 %</b>	<b>64.9 %</b>	<b>33.5 %</b>	<b>35.1 %</b>	

Sources : Canadian Slaughter and Grading Data, CBGA, US Data: USDA, Canadian TRQ Data: DFATD



## Beef Supply at a Glance

### Year To Date for the Week Ending December 6, 2014

#### Weekly Federally Inspected Slaughter

	Fed Slaughter				Non-fed Slaughter				Total Canada
	West	East	Canada	Weekly Avg.	West	East	Canada	Weekly Avg.	
2014-12-06	30,125	10,810	40,935		10,107	2,061	12,168		53,103
November 2014	153,331	54,435	207,766	41,553	44,546	8,780	53,326	10,665	261,092
October 2014	138,849	41,954	180,803	45,201	24,354	5,264	29,618	7,405	210,421
September 2014	141,319	44,843	186,162	46,541	21,376	4,825	26,201	6,550	212,363
August 2014	177,545	52,807	230,352	46,070	24,120	7,076	31,196	6,239	261,548
July 2014	131,272	37,314	168,586	42,147	21,689	6,095	27,784	6,946	196,370
June 2014	150,238	41,519	191,757	47,939	20,963	6,047	27,010	6,753	218,767
May 2014	178,328	48,350	226,678	45,336	23,983	8,320	32,303	6,461	258,981
April 2014	137,935	40,498	178,433	44,608	20,107	7,475	27,582	6,896	206,015
March 2014	178,443	54,749	233,192	46,638	32,677	9,372	42,049	8,410	275,241
February 2014	120,734	39,279	160,013	40,003	31,269	8,067	39,336	9,834	199,349
January 2014	111,441	37,125	148,566	37,142	34,225	8,999	43,224	10,806	191,790
December 2013	58,051	23,824	81,875	16,375	20,340	4,941	25,281	5,056	107,156
November 2013	118,003	41,585	159,588	39,897	39,756	9,317	49,073	12,268	208,661
October 2013	123,755	43,450	167,205	41,801	32,154	7,032	39,186	9,797	206,391
September 2013	174,998	52,658	227,656	45,531	27,352	6,966	34,318	6,864	261,974
August 2013	132,749	39,384	172,133	43,033	22,682	6,630	29,312	7,328	201,445
July 2013	127,118	41,123	168,241	42,060	22,389	6,049	28,438	7,110	196,679
June 2013	149,357	54,963	204,320	40,864	25,649	8,168	33,817	6,763	238,137
May 2013	131,026	42,211	173,237	43,309	23,723	5,228	28,951	7,238	202,188
April 2013	136,709	45,396	182,105	45,526	23,738	6,313	30,051	7,513	212,156
March 2013	162,105	48,960	211,065	42,213	30,814	9,815	40,629	8,126	251,694
February 2013	115,609	33,933	149,542	37,386	33,082	8,796	41,878	10,470	191,420
January 2013	97,992	33,151	131,143	32,786	35,396	10,182	45,578	11,395	176,721
2014	1,649,560	503,683	2,153,243	43,944	309,416	82,381	391,797	7,996	2,545,040
Total 2013	1,527,472	500,638	2,028,110	39,002	337,075	89,437	426,512	8,202	2,454,622

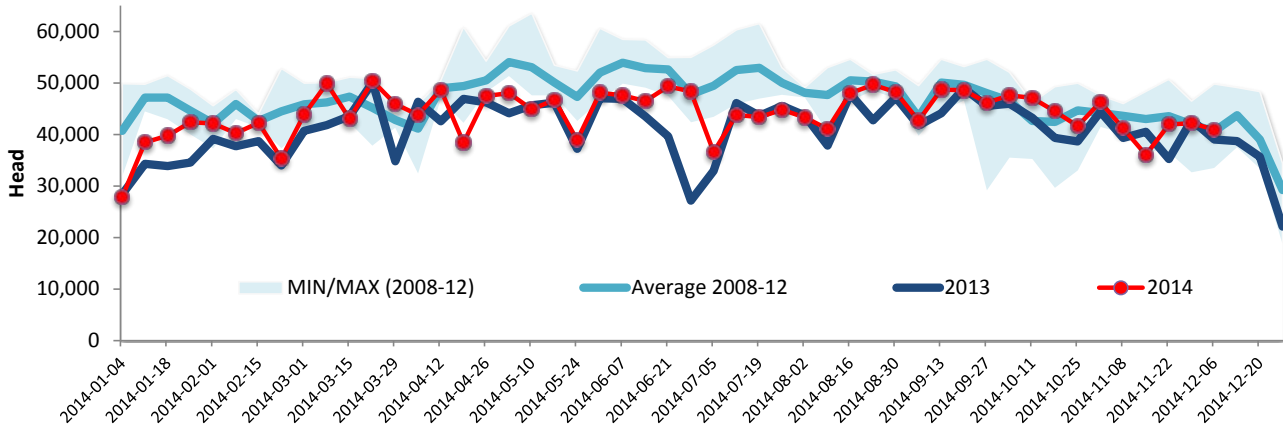
Grading								
	Weekly Totals				December 6, 2014			
	West	%	East	%	Canada 2014	%	Canada 2013	%
A - Prime	1011	3.4 %	431	4.0 %	1,442	3.5 %	721	1.8 %
AAA	19101	63.7 %	6,398	59.2 %	25,499	62.5 %	22,205	56.6 %
AA	9113	30.4 %	3,388	31.4 %	12,501	30.6 %	14,804	37.7 %
A	297	1.0 %	216	2.0 %	513	1.3 %	620	1.6 %
B1, 2, 3, 4	476	1.6 %	372	3.4 %	848	2.1 %	868	2.2 %
Year-to-date								
	West	%	East	%	Canada 2014	%	Canada 2013	%
A - Prime	22,044	1.3 %	14,497	2.9 %	36,541	1.7 %	32,168	1.6 %
AAA	910,132	55.4 %	290,894	57.4 %	1,201,026	55.8 %	1,116,787	54.9 %
AA	660,311	40.2 %	169,454	33.4 %	829,765	38.6 %	800,566	39.4 %
A	28,419	1.7 %	13,594	2.7 %	42,013	2.0 %	41,415	2.0 %
B1, 2, 3, 4	22,523	1.4 %	18,768	3.7 %	41,291	1.9 %	42,349	2.1 %

Source : Canadian Beef Grading Agency

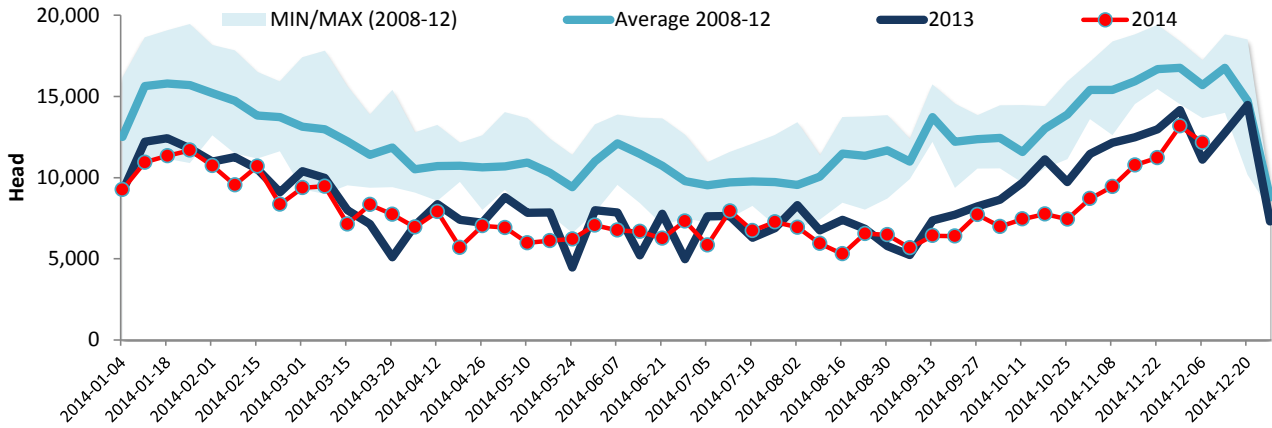
Year To Date for the Week Ending December 6, 2014

0

### Canadian Fed Slaughter



### Canadian Non-Fed Slaughter



### Total Cattle Slaughter in Canada

