



# Beef Supply at a Glance - CANADA

Year To Date for the Week Ending April 13, 2013

Federally Inspected Slaughter (head)	West			East			CANADA		
	2013	2012	% chg	2013	2012	% chg	2013	2012	% chg
Steers	260,144	254,914	2 %	98,065	98,482	0 %	358,209	353,396	1 %
Heifers	182,113	232,239	-22 %	40,381	49,207	-18 %	222,494	281,446	-21 %
Cows	110,761	96,089	15 %	32,007	59,915	-47 %	142,768	156,004	-8 %
Bulls	551	4,099	-87 %	182	1,023	-82 %	733	5,122	-86 %
<b>Total</b>	<b>553,569</b>	<b>587,341</b>	<b>-6 %</b>	<b>170,635</b>	<b>208,627</b>	<b>-18 %</b>	<b>724,204</b>	<b>795,968</b>	<b>-9 %</b>
<b>Carcass Weight (lbs)</b>									
Steers	881	881	0 %	910	891	2 %	889	884	1 %
Heifers	829	832	0 %	818	806	1 %	827	828	0 %
Cows	681	705	-3 %	654	629	4 %	675	676	0 %
Bulls	945	1,033	-9 %	916	933	-2 %	938	1,013	-7 %
<b>Beef Output (tonnes)</b>									
Fed	172,799	189,910	-9 %	55,578	57,913	-4 %	228,387	247,927	-8 %
Non-Fed	34,522	32,717	6 %	9,591	17,564	-45 %	44,116	50,294	-12 %
<b>Total</b>	<b>207,322</b>	<b>222,627</b>	<b>-7 %</b>	<b>65,168</b>	<b>75,477</b>	<b>-14 %</b>	<b>272,503</b>	<b>298,221</b>	<b>-9 %</b>

Source: Canadian Beef Grading Agency

<b>EXPORTS</b>				For the period Jan. 1 - April 6, 2013					
Live Cattle	2013	2012	% chg	<b>IMPORTS</b>			For the period Jan. 1 - Feb. 28, 2013		
slaughter steers & heifers	118,937	118,737	0 %	(# of head)	2013	2012	% chg		
feeder cattle & calves	89,503	54,733	64 %	Live Cattle	pure bred	613	696	-12 %	
cows & bulls	104,196	50,430	107 %	From U.S.	non pure bred	4,132	7,683	-46 %	
others*	3,766	2,579	46 %	<b>Total</b>	<b>4,745</b>	<b>8,379</b>	<b>-43 %</b>	Source: Statistics Canada	
<b>Total</b>	<b>316,402</b>	<b>226,479</b>	<b>40 %</b>	For the period Jan. 1 - April 13, 2013					

\* = breeding and others

Source: USDA - APHIS

<b>Beef &amp; Veal Exports to US</b>			
(Tonnes)	2013	2012	% chg
Fresh/chilled cuts	22,549	36,081	-38 %
Frozen cuts	5,005	2,152	133 %
Offals	1,568	2,451	-36 %
Processed	122	176	-31 %
<b>TOTAL</b>	<b>29,245</b>	<b>40,860</b>	<b>-28 %</b>
Exports (Jan. 1 - Dec. 31)		197,378	

Source: Statistics Canada

<b>Beef and Veal</b>			
(tonnes) preliminary	2013	2012	% chg
United States	49,225	42,825	15 %
New Zealand	4,337	9,220	-53 %
Australia	3,757	3,763	0 %
Uruguay	5,605	3,560	57 %
Others	446	862	-48 %
<b>Total</b>	<b>63,369</b>	<b>60,231</b>	<b>5 %</b>
<b>Non-NAFTA Beef/Veal total</b>	<b>13,535</b>	<b>16,443</b>	<b>-18 %</b>
Fresh, chilled & frozen (H.S. 0201, 0202)			

Source: CFIA

<b>Beef &amp; Veal Exports</b>			
(Tonnes)	Jan. 1 to Feb. 28		
	2013	2012	% chg
United States	29,245	40,860	-28 %
Mexico	985	4,174	-76 %
Hong Kong	2,951	3,497	-16 %
Russia	160	1,222	-87 %
Japan	1,509	1,396	8 %
China	471	47	
Egypt	331	366	-10 %
South Korea	325	0	
Columbia	0	0	
Ghana	0	81	
Suriname	139	85	64 %
Ivory Coast	103	51	157 %
Cuba	72	144	-50 %
Philippines	21	47	-54 %
Taiwan	92	207	-56 %
Others	1,517	691	
<b>TOTAL</b>	<b>37,920</b>	<b>52,868</b>	<b>-28 %</b>

Source: Statistics Canada

<b>Beef &amp; Veal Exports</b>			
('000 \$ CDN)	Jan. 1 to Feb. 28		
	2013	2012	% chg
United States	122,253	175,738	-30 %
Mexico	6,209	20,954	-70 %
Hong Kong	17,492	13,900	26 %
Japan	7,517	8,570	-12 %
Russia	266	3,524	-92 %
South Korea	1,533	894	72 %
China	1,512	178	
Cuba	654	1,285	-49 %
Egypt	572	688	-17 %
Suriname	709	341	
Macedonia	0	394	
France	229	236	-3 %
Taiwan	324	871	-63 %
Italy	352	273	29 %
Switzerland	250	311	-20 %
Others	6,174	1,331	
<b>TOTAL</b>	<b>166,046</b>	<b>229,489</b>	<b>-28 %</b>

Source: Statistics Canada

**Year To Date for the Week Ending April 6, 2013**

	Weekly	2013	2012	% chg		Weekly	2013	2012	% chg
<b>Slaughter ('000 head)</b>					<b>Carcass Weight (lbs)</b>				
Steers	281.9	4,018.9	4,070.5	-1 %	Steers	847	864	851	2 %
Heifers	181.4	2,452.5	2,583.2	-5 %	Heifers	795	803	792	1 %
Cows	123.3	1,721.6	1,717.2	0 %	Cows	627	623	617	1 %
Bulls	10.2	132.2	139.3	-5 %	Bulls	886	883	877	1 %
<b>Total</b>	<b>596.8</b>	<b>8,325.2</b>	<b>8,510.2</b>	<b>-2 %</b>					
<b>Total (Jan. To Dec. 2012)</b>			<b>32,336.9</b>						

Source : USDA

<b>Beef Output (tonnes)</b>		2013	2012	% chg
Fed		2,473,637	2,504,495	-1 %
Non-Fed		540,243	537,127	1 %
<b>Total</b>		<b>3,013,880</b>	<b>3,041,622</b>	<b>-1 %</b>
<b>Total (Jan. To Dec. 2012)</b>			<b>11,615,011</b>	

<b>National Summary of Beef Graded</b>			
	Feb 2013	2012	2011
Prime	4.3 %	3.6 %	3.6 %
Choice	69.0 %	65.2 %	65.2 %
Select	26.5 %	30.8 %	30.7 %

	For the period Jan.Feb.	2013	2012	% chg
<b>U.S. Beef and Veal Imports (carcass weight, ' 000 lbs)</b>				
Canada		80	113	-29 %
Australia		89	91	-3 %
New Zealand		99	69	43 %
Other		107	85	26 %
<b>Total</b>		<b>374</b>	<b>359</b>	<b>4 %</b>

<b>Cattle Slaughter for the Week Ending</b>			
	2013	2012	% chg
Canada	53,419	41,747	28 %
US	596,800	621,200	-4 %
<b>Total Canada &amp; US</b>	<b>650,219</b>	<b>662,947</b>	<b>-2 %</b>

<b>U.S. Beef and Veal Exports (carcass weight, ' 000 lbs)</b>		2013	2012	% chg
Mexico		54	74	-28 %
Canada		84	59	41 %
Japan		58	57	2 %
Other		174	174	0 %
<b>Total</b>		<b>369</b>	<b>364</b>	<b>1 %</b>

<b>Cattle Slaughter Year to Date</b>			
Canada	673,254	737,859	-9 %
US	8,325,200	8,510,200	-2 %
<b>Total Canada &amp; US</b>	<b>8,998,454</b>	<b>9,248,059</b>	<b>-3 %</b>

<b>US Live Cattle Imports</b>			
Mexico - Feeder (Jan 1-April 13, 2013)	333,477	509,348	-35 %
Canada (Jan. 1) April 6, 2013)	316,402	226,479	40 %

**Canada and United States Beef and Veal Tariff Rate Quota Summary****US Beef and Veal Tariff Rate Quota (TRQ) Summary**

YTD Week Ending April 15, 2013	2013			2012		
Quota level	Tonnes entered	% filled	Tonnes entered	% filled	2013 VS 2012	
Australia	378,214	45,612	12 %	46,989	12%	-3 %
New Zealand	213,402	55,782	26 %	41,709	20%	34 %
Argentina	20,000	0	0 %	0	0%	
Uruguay	20,000	7,387	37 %	4,151	21%	78 %
Japan	200	21	10 %	0	0%	
Others	64,805	13,861	21 %	14,107	22%	-2 %
<b>Total TRQ</b>	<b>696,621</b>	<b>122,663</b>	<b>18 %</b>	<b>106,956</b>	<b>15%</b>	<b>15 %</b>
<b>TRQ (Australia, N. Z.)</b>	<b>591,616</b>	<b>101,394</b>	<b>17 %</b>	<b>88,698</b>	<b>15%</b>	<b>14 %</b>
Canada	no limit	45,108	n/a	61,189	n/a	-26 %
Mexico	no limit	25,226	n/a	20,394	n/a	24 %

**Canadian Beef and Veal Import Permits by Country**

YTD Week Ending April 13, 2013	2013	2012	% chg
Global quota (tonnes)	76,409	76,409	0 %
Supp. Quota Authorized	-	-	
<b>Total quota</b>	<b>76,409</b>	<b>76,409</b>	<b>0 %</b>
Permits issued			
New Zealand (29600 mt)	4,785	9,378	-49 %
Australia (35000 mt)	4,478	3,513	27 %
Uruguay	5,822	3,626	61 %
Japan	1	-	
<b>Total</b>	<b>15,086</b>	<b>16,517</b>	<b>-9 %</b>

**Canadian Beef and Veal Import Permits by Type of Meat**

YTD April 13, 2013	2013 (tonnes)		Percentage of Total Imports	
	Grinding Beef	Cuts	2013	2012
Japan	0	1	1	0 %
Australia	2,155	2,323	4,478	30 %
New Zealand	1,665	3,120	4,785	32 %
Uruguay	5,536	286	5,822	39 %
<b>Total</b>	<b>9,356</b>	<b>5,730</b>	<b>15,086</b>	<b>100 %</b>
Percentage of Total Imports				
	Grinding Beef		Cuts	
	2013	2012	2013	2012
Australia	14.3 %	12.9 %	15.4 %	8.4 %
New Zealand	11.0 %	23.2 %	20.7 %	33.5 %
Argentina				
Uruguay	36.7 %	19.5 %	1.9 %	2.5 %
<b>Total</b>	<b>62.0 %</b>	<b>55.6 %</b>	<b>38.0 %</b>	<b>44.4 %</b>

Sources : Canadian Slaughter and Grading Data, CBGA, US Data: USDA, Canadian TRQ Data: DFAIT



# Beef Supply at a Glance

Year To Date for the Week Ending April 13, 2013

## Weekly Federally Inspected Slaughter

	Fed Slaughter				Non-fed Slaughter				Total Canada
	West	East	Canada	Weekly Avg.	West	East	Canada	Weekly Avg.	
2013-04-13	31,978	10,607	42,585		6,614	1,751	8,365		50,950
2013-04-06	34,573	11,795	46,368		5,406	1,645	7,051		53,419
2013-03-30	26,439	8,369	34,808		3,478	1,619	5,097		39,905
2013-03-23	39,704	10,457	50,161		5,202	1,949	7,151		57,312
2013-03-16	33,411	10,132	43,543		6,013	1,980	7,993		51,536
2013-03-09	31,856	9,997	41,853		7,923	2,060	9,983		51,836
2013-03-02	30,695	10,005	40,700		8,198	2,207	10,405		51,105
2013-02-23	26,071	7,903	33,974		7,071	2,023	9,094		43,068
2013-02-16	30,036	8,665	38,701		8,454	2,079	10,533		49,234
2013-02-09	27,960	9,746	37,706		9,134	2,138	11,272		48,978
2013-02-02	31,542	7,619	39,161		8,423	2,556	10,979		50,140
2013-01-26	26,655	7,896	34,551		9,168	2,633	11,801		46,352
2013-01-19	24,617	9,278	33,895		9,329	3,092	12,421		46,316
2013-01-12	25,522	8,789	34,311		9,279	2,935	12,214		46,525
December 2012	112,442	45,782	158,224	31,645	40,972	11,932	52,904	10,581	211,128
November 2012	110,962	44,226	155,188	38,797	21,653	9,536	31,189	7,797	186,377
October 2012	88,401	44,977	133,378	33,345	14,947	7,324	22,271	5,568	155,649
September 2012	155,560	52,350	207,910	41,582	18,398	8,020	26,418	5,284	234,328
August 2012	145,455	40,151	185,606	46,402	16,472	5,977	22,449	5,612	208,055
July 2012	144,623	39,432	184,055	46,014	20,769	7,061	27,830	6,958	211,885
June 2012	189,338	49,697	239,035	47,807	23,060	10,253	33,313	6,663	272,348
May 2012	151,522	40,598	192,120	48,030	18,765	13,246	32,011	8,003	224,131
April 2012	136,434	38,963	175,397	43,849	21,529	14,214	35,743	8,936	211,140
March 2012	170,035	54,134	224,169	44,834	33,164	19,548	52,712	10,542	276,881
to date 2013	442,257	138,446	580,703	38,714	111,312	32,189	143,501	9,567	724,204
Total 2012	1,659,439	525,503	2,184,942	42,018	284,541	141,670	426,211	8,196	2,611,153

Source : Canadian Beef Grading Agency

Grading								
	Weekly Totals				April 13, 2013			
	West	%	East	%	Canada 2013	%	Canada 2012	%
A - Prime	886	2.8 %	278	2.6 %	1,164	2.7 %	804	1.7 %
AAA	20,589	64.5 %	6,163	57.3 %	26,752	62.6 %	31,858	65.9 %
AA	9,731	30.5 %	3,749	34.9 %	13,480	31.6 %	14,605	30.2 %
A	325	1.0 %	237	2.2 %	562	1.3 %	500	1.0 %
B1, 2, 3, 4	413	1.3 %	330	3.1 %	743	1.7 %	568	1.2 %
Year-to-date								
	West	%	East	%	Canada 2013	%	Canada 2012	%
A - Prime	7,199	1.6 %	3,163	2.2 %	10,362	1.8 %	7,382	1.2 %
AAA	270,164	61.0 %	78,549	55.7 %	348,713	59.7 %	359,105	56.4 %
AA	157,358	35.6 %	50,082	35.5 %	207,440	35.5 %	252,521	39.6 %
A	3,937	0.9 %	3,715	2.6 %	7,652	1.3 %	8,908	1.4 %
B1, 2, 3, 4	3,951	0.9 %	5,609	4.0 %	9,560	1.6 %	9,313	1.5 %

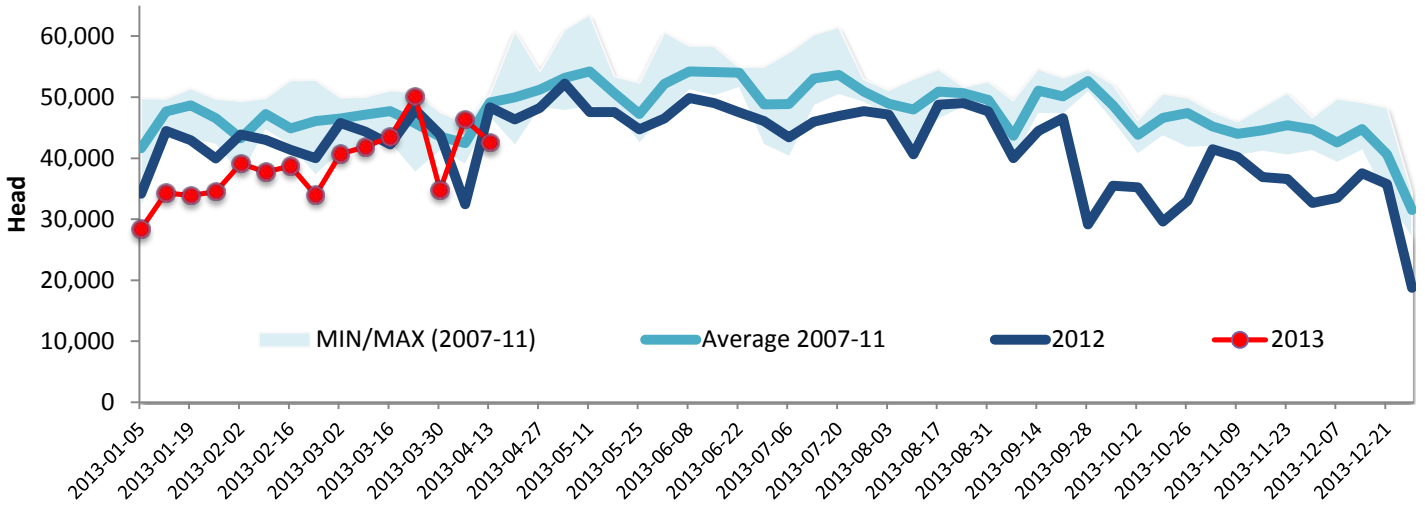
Source : Canadian Beef Grading Agency



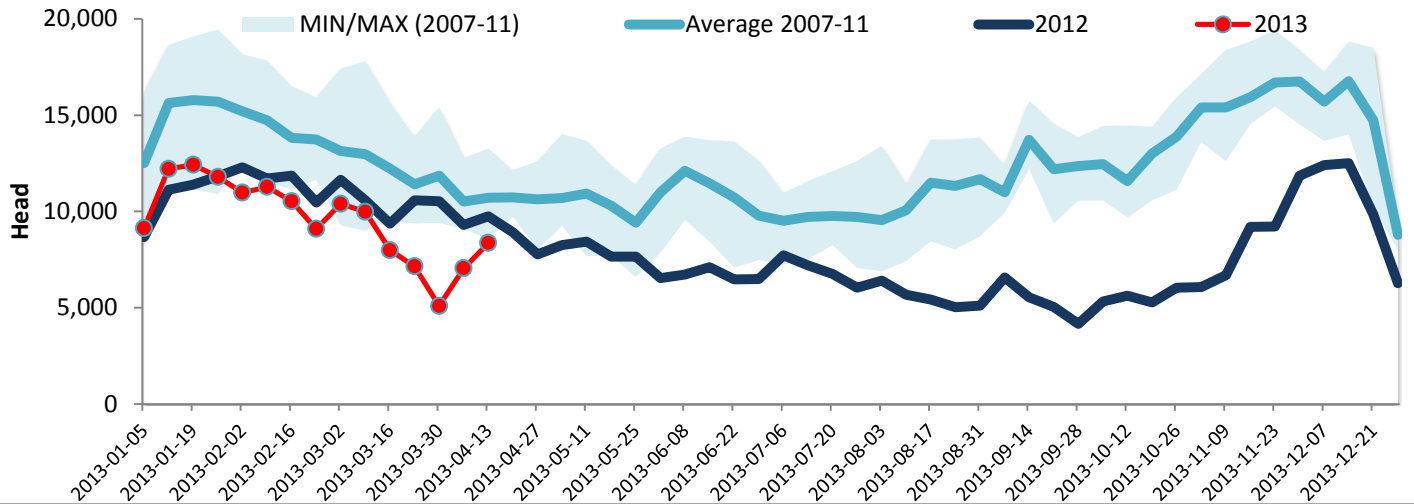
Year To Date for the Week Ending April 13, 2013

Federally Inspected Slaughter

### Canadian Fed Slaughter



### Canadian Non-Fed Slaughter



### Total Cattle Slaughter in Canada

