



Beef Supply at a Glance - CANADA

Year To Date for the Week Ending April 6, 2013

Federally Inspected Slaughter (head)	West			East			CANADA		
	2013	2012	% chg	2013	2012	% chg	2013	2012	% chg
Steers	245,259	236,865	4 %	90,559	92,293	-2 %	335,818	329,158	2 %
Heifers	165,020	212,169	-22 %	37,280	45,149	-17 %	202,300	257,318	-21 %
Cows	104,267	90,060	16 %	30,267	56,689	-47 %	134,534	146,749	-8 %
Bulls	431	3,678	-88 %	171	956	-82 %	602	4,634	-87 %
Total	514,977	542,772	-5 %	158,277	195,087	-19 %	673,254	737,859	-9 %
Carcass Weight (lbs)									
Steers	881	881	0 %	909	890	2 %	888	884	0 %
Heifers	828	833	-1 %	817	806	1 %	826	828	0 %
Cows	681	704	-3 %	653	629	4 %	675	675	0 %
Bulls	926	1,032	-10 %	821	934	-12 %	924	1,012	-9 %
Beef Output (tonnes)									
Fed	160,323	175,189	-8 %	51,262	53,878	-5 %	211,503	229,107	-8 %
Non-Fed	32,457	30,545	6 %	9,048	16,614	-46 %	41,530	47,157	-12 %
Total	192,779	205,733	-6 %	60,309	70,491	-14 %	253,033	276,264	-8 %

Source: Canadian Beef Grading Agency

EXPORTS				For the period Jan. 1 - March 30, 2013			
Live Cattle	2013	2012	% chg				
slaughter steers & heifers	108,584	107,606	1 %				
feeder cattle & calves	81,569	49,299	65 %				
cows & bulls	96,831	47,176	105 %				
others*	3,565	2,371	50 %				
Total	290,549	206,452	41 %				

* = breeding and others

Source: USDA - APHIS

Beef & Veal Exports to US			
(Tonnes)	2013	2012	% chg
Fresh/chilled cuts	22,549	36,081	-38 %
Frozen cuts	5,005	2,152	133 %
Offals	1,568	2,451	-36 %
Processed	122	176	-31 %
TOTAL	29,245	40,860	-28 %
Exports (Jan. 1 - Dec. 31)		197,378	

Source: Statistics Canada

Beef & Veal Exports			
(Tonnes)	Jan. 1 to Feb. 28		
	2013	2012	% chg
United States	29,245	40,860	-28 %
Mexico	985	4,174	-76 %
Hong Kong	2,951	3,497	-16 %
Russia	160	1,222	-87 %
Japan	1,509	1,396	8 %
China	471	47	
Egypt	331	366	-10 %
South Korea	325	0	
Columbia	0	0	
Ghana	0	81	
Suriname	139	85	64 %
Ivory Coast	103	51	157 %
Cuba	72	144	-50 %
Philippines	21	47	-54 %
Taiwan	92	207	-56 %
Others	1,517	691	
TOTAL	37,920	52,868	-28 %

Source: Statistics Canada

IMPORTS				For the period Jan. 1 - Feb. 28, 2013			
(# of head)	2013	2012	% chg				
Live Cattle pure bred	613	696	-12 %				
From U.S. non pure bred	4,132	7,683	-46 %				
Total	4,745	8,379	-43 %				

Source: Statistics Canada

Beef and Veal			
(tonnes) preliminary	For the period Jan. 1 - April 6, 2013		
	2013	2012	% chg
United States	46,545	39,486	18 %
New Zealand	4,042	9,002	-55 %
Australia	3,346	3,327	1 %
Uruguay	5,295	3,509	51 %
Others	368	811	-55 %
Total	59,595	56,136	6 %
Non-NAFTA Beef/Veal total	12,535	15,738	-20 %
Fresh, chilled & frozen (H.S. 0201, 0202)			

Source: CFIA

Beef & Veal Exports			
('000 \$ CDN)	Jan. 1 to Feb. 28		
	2013	2012	% chg
United States	122,253	175,738	-30 %
Mexico	6,209	20,954	-70 %
Hong Kong	17,492	13,900	26 %
Japan	7,517	8,570	-12 %
Russia	266	3,524	-92 %
South Korea	1,533	894	72 %
China	1,512	178	
Cuba	654	1,285	-49 %
Egypt	572	688	-17 %
Suriname	709	341	
Macedonia	0	394	
France	229	236	-3 %
Taiwan	324	871	-63 %
Italy	352	273	29 %
Switzerland	250	311	-20 %
Others	6,174	1,331	
TOTAL	166,046	229,489	-28 %

Source: Statistics Canada

**Year To Date for the Week Ending March 30, 2013**

	Weekly	2013	2012	% chg		Weekly	2013	2012	% chg
Slaughter ('000 head)					Carcass Weight (lbs)				
Steers	290.0	3,737.0	3,772.4	-1 %	Steers	851	866	851	2 %
Heifers	177.3	2,271.1	2,386.0	-5 %	Heifers	792	803	793	1 %
Cows	120.2	1,598.3	1,601.9	0 %	Cows	621	622	617	1 %
Bulls	10.4	122.0	128.7	-5 %	Bulls	882	882	876	1 %
Total	597.9	7,728.4	7,889.0	-2 %					
Total (Jan. To Dec. 2012)			32,336.9						

Source : USDA

Beef Output (tonnes)				National Summary of Beef Graded				
		2013	2012	% chg		Feb 2013	2012	2011
Fed		2,299,534	2,319,277	-1 %	Prime	4.3 %	3.6 %	3.6 %
Non-Fed		500,950	500,506	0 %	Choice	69.0 %	65.2 %	65.2 %
Total		2,800,485	2,819,784	-1 %	Select	26.5 %	30.8 %	30.7 %
Total (Jan. To Dec. 2012)			11,615,011					

For the period Jan.Feb.				Cattle Slaughter for the Week Ending			
	2013	2012	% chg		2013	2012	% chg
U.S. Beef and Veal Imports (carcass weight, ' 000 lbs)				Canada	39,905	54,403	-27 %
Canada	80	113	-29 %	US	597,900	602,400	-1 %
Australia	89	91	-3 %	Total Canada & US	637,805	656,803	-3 %
New Zealand	99	69	43 %				
Other	107	85	26 %				
Total	374	359	4 %				

U.S. Beef and Veal Exports (carcass weight, ' 000 lbs)				Cattle Slaughter Year to Date			
	2013	2012	% chg		2013	2012	% chg
Mexico	54	74	-28 %	Canada	619,835	696,112	-11 %
Canada	84	59	41 %	US	7,728,400	7,889,000	-2 %
Japan	58	57	2 %	Total Canada & US	8,348,235	8,585,112	-3 %
Other	174	174	0 %				
Total	369	364	1 %				

Canada and United States Beef and Veal Tariff Rate Quota Summary

US Beef and Veal Tariff Rate Quota (TRQ) Summary							
YTD Week Ending April 8, 2013	2013			2012			
Quota level	Tonnes entered	% filled	Tonnes entered	% filled	2013 VS 2012		
Australia	378,214	40,987	11 %	42,147	11%	-3 %	
New Zealand	213,402	50,430	24 %	37,205	17%	36 %	
Argentina	20,000	0	0 %	0	0%		
Uruguay	20,000	6,634	33 %	3,780	19%	76 %	
Japan	200	19	9 %	0	0%		
Others	64,805	12,872	20 %	12,755	20%	1 %	
Total TRQ	696,621	110,941	16 %	95,887	14%	16 %	
TRQ (Australia, N. Z.)	591,616	91,416	15 %	79,352	13%	15 %	
Canada	no limit	42,039	n/a	56,349	n/a	-25 %	
Mexico	no limit	23,946	n/a	18,958	n/a	26 %	

Canadian Beef and Veal Import Permits by Country				Canadian Beef and Veal Import Permits by Type of Meat				
YTD Week Ending April 8, 2013	2013	2012	% chg	2013 (tonnes)		Total Total (%)		
				Grinding Beef	Cuts			
Global quota (tonnes)	76,409	76,409	0 %	Japan	0	1	1	0 %
Supp. Quota Authorized	-	-		Australia	1,880	2,075	3,955	28 %
Total quota	76,409	76,409	0 %	New Zealand	1,600	2,784	4,384	31 %
				Uruguay	5,432	286	5,718	41 %
Permits issued				Total	8,912	5,146	14,059	100 %
New Zealand (29600 mt)	4,384	9,181	-52 %					
Australia (35000 mt)	3,955	3,219	23 %	YTD April 8, 2013	Percentage of Total Imports			
Uruguay	5,718	3,524	62 %		Grinding Beef	Cuts		
Japan	1	-			2013	2012	2013	2012
Total	14,059	15,924	-12 %	Australia	13.4 %	12.5 %	14.8 %	7.7 %
Over quota tariff rate : 26.5 %				New Zealand	11.4 %	23.6 %	19.8 %	34.0 %
				Argentina				
				Uruguay	38.6 %	19.7 %	2.0 %	2.4 %
				Total	63.4 %	55.8 %	36.6 %	44.2 %

Sources : Canadian Slaughter and Grading Data, CBGA, US Data: USDA, Canadian TRQ Data: DFAIT



Beef Supply at a Glance

Year To Date for the Week Ending April 6, 2013

Weekly Federally Inspected Slaughter

	Fed Slaughter				Non-fed Slaughter				Total Canada
	West	East	Canada	Weekly Avg.	West	East	Canada	Weekly Avg.	
2013-04-06	34,573	11,795	46,368		5,406	1,645	7,051		53,419
2013-03-30	26,439	8,369	34,808		3,478	1,619	5,097		39,905
2013-03-23	39,704	10,457	50,161		5,202	1,949	7,151		57,312
2013-03-16	33,411	10,132	43,543		6,013	1,980	7,993		51,536
2013-03-09	31,856	9,997	41,853		7,923	2,060	9,983		51,836
2013-03-02	30,695	10,005	40,700		8,198	2,207	10,405		51,105
2013-02-23	26,071	7,903	33,974		7,071	2,023	9,094		43,068
2013-02-16	30,036	8,665	38,701		8,454	2,079	10,533		49,234
2013-02-09	27,960	9,746	37,706		9,134	2,138	11,272		48,978
2013-02-02	31,542	7,619	39,161		8,423	2,556	10,979		50,140
2013-01-26	26,655	7,896	34,551		9,168	2,633	11,801		46,352
2013-01-19	24,617	9,278	33,895		9,329	3,092	12,421		46,316
2013-01-12	25,522	8,789	34,311		9,279	2,935	12,214		46,525
December 2012	112,442	45,782	158,224	31,645	40,972	11,932	52,904	10,581	211,128
November 2012	110,962	44,226	155,188	38,797	21,653	9,536	31,189	7,797	186,377
October 2012	88,401	44,977	133,378	33,345	14,947	7,324	22,271	5,568	155,649
September 2012	155,560	52,350	207,910	41,582	18,398	8,020	26,418	5,284	234,328
August 2012	145,455	40,151	185,606	46,402	16,472	5,977	22,449	5,612	208,055
July 2012	144,623	39,432	184,055	46,014	20,769	7,061	27,830	6,958	211,885
June 2012	189,338	49,697	239,035	47,807	23,060	10,253	33,313	6,663	272,348
May 2012	151,522	40,598	192,120	48,030	18,765	13,246	32,011	8,003	224,131
April 2012	136,434	38,963	175,397	43,849	21,529	14,214	35,743	8,936	211,140
March 2012	170,035	54,134	224,169	44,834	33,164	19,548	52,712	10,542	276,881
to date 2013	410,279	127,839	538,118	38,437	104,698	30,438	135,136	9,653	673,254
Total 2012	1,659,439	525,503	2,184,942	42,018	284,541	141,670	426,211	8,196	2,611,153

Source : Canadian Beef Grading Agency

Grading								
	Weekly Totals				April 6, 2013			
	West	%	East	%	Canada 2013	%	Canada 2012	%
A - Prime	709	2.1 %	241	1.7 %	950	2.0 %	407	1.3 %
AAA	21,929	63.5 %	2,877	20.4 %	24,806	51.0 %	21,009	64.7 %
AA	11,107	32.2 %	2,218	15.8 %	13,325	27.4 %	10,021	30.9 %
A	451	1.3 %	1,822	12.9 %	2,273	4.7 %	434	1.3 %
B1, 2, 3, 4	338	1.0 %	6,917	49.1 %	7,255	14.9 %	577	1.8 %
Year-to-date								
	West	%	East	%	Canada 2013	%	Canada 2012	%
A - Prime	6,313	1.2 %	2,885	2.0 %	9,198	1.4 %	6,578	1.1 %
AAA	90,465	17.9 %	29,302	19.8 %	119,767	18.3 %	327,247	55.6 %
AA	107,154	21.2 %	24,284	16.4 %	131,438	20.1 %	237,916	40.4 %
A	51,956	10.3 %	18,800	12.7 %	70,756	10.8 %	8,408	1.4 %
B1, 2, 3, 4	249,575	49.4 %	72,386	49.0 %	321,961	49.3 %	8,745	1.5 %

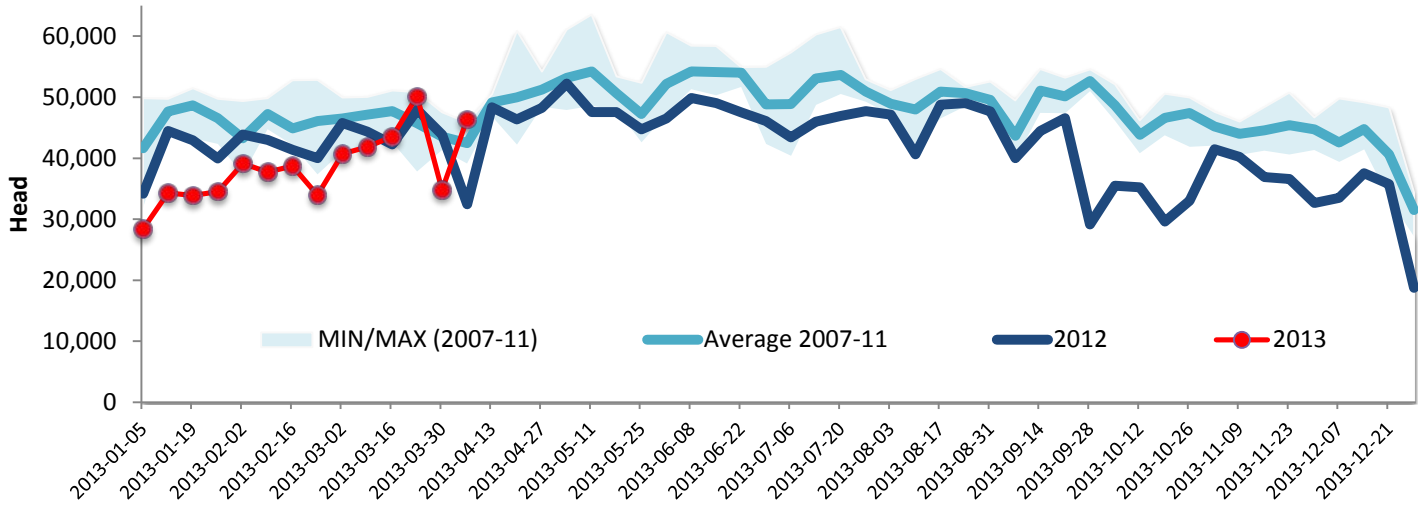
Source : Canadian Beef Grading Agency



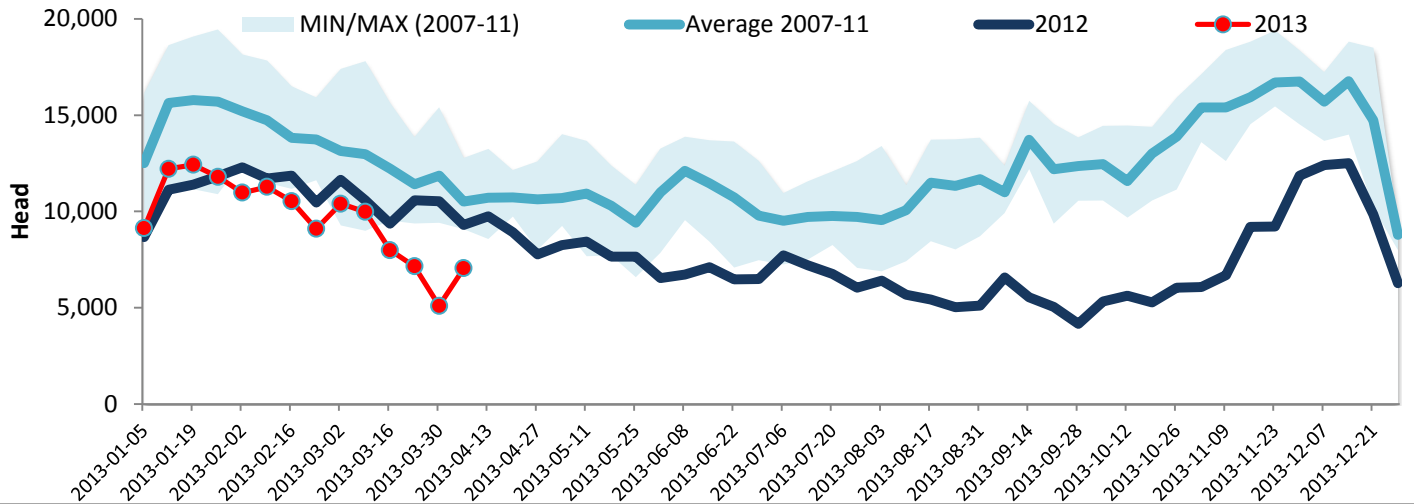
Year To Date for the Week Ending April 6, 2013

Federally Inspected Slaughter

Canadian Fed Slaughter



Canadian Non-Fed Slaughter



Total Cattle Slaughter in Canada

